



RJ45 Cat6 550MHz Molded Patch Cable - Premium Fluke® Patch Cable Certified - CMR Riser Rated

CAT6-xxYY - Specifications

Description

This Cat6 ethernet cable consists of a RJ45 male on one end and a RJ45 male on the other. It is typically used for ethernet network connections such as patch panels, switches and computers to routers. These cables are Fluke® Cat6 patch cable certified and come with an individual test report. The cable jacket is also CMR (riser) fire rated.

Physical Characteristics

Colors Available	Black / Blue / Green / Grey / Orange / Pink / Purple / Red / White / Yellow
Connector Plating	Gold Plated 50 Micron
Cable Diameter	6.2mm
Wire Gauge	24AWG Stranded
Shielding	UTP (Unshielded)
Pairs	4
Fire Rating	CMR (FT4 Riser Rated)
Color Code	568B
Molding Jacket	Molded Tab Style Strain Relief
Temperature Rating	-10C to +75C
Jacket Type	PVC
Bend Radius	24mm

Connectors

Connector A	RJ45 Long Body Male
Connector B	RJ45 Long Body Male

Performance

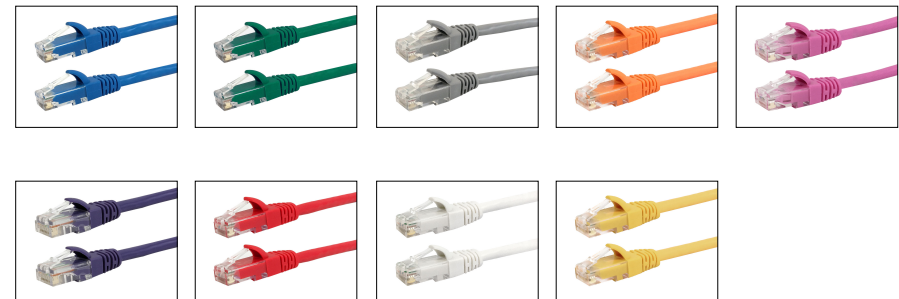
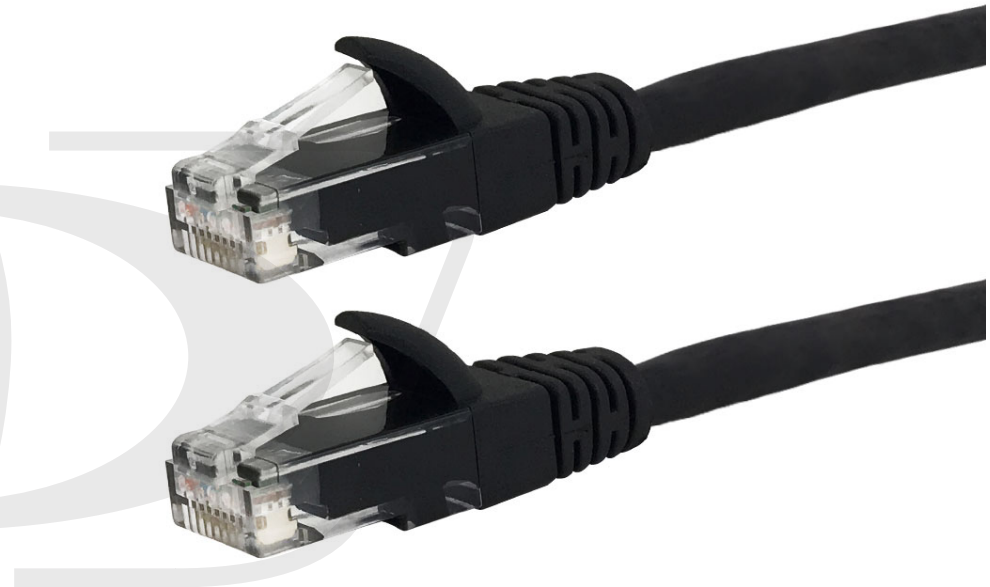
Fluke® CAT6 Patch Cable Test	Yes
Frequency	550 MHz

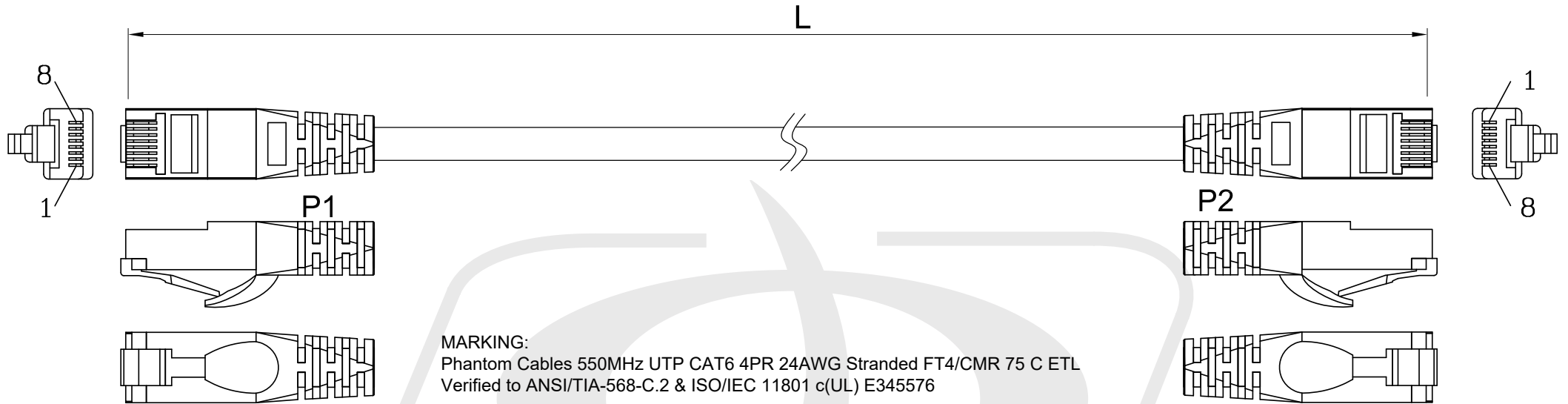
Approvals/Environmental

c(UL)us	Yes - Cable
ETL Verified	Yes
ANSI/TIA - 568 - C.2	Yes
ISO/IEC 11801	Yes
EN 50173-1	Yes
RoHS, Reach, Conflict Materials	Yes

Warranty Information

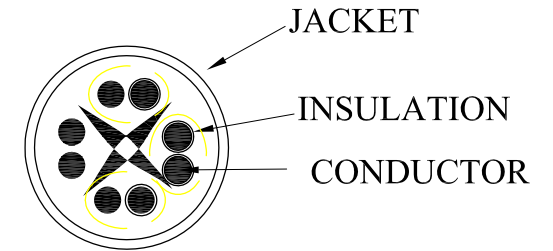
Warranty	Limited Lifetime
----------	------------------



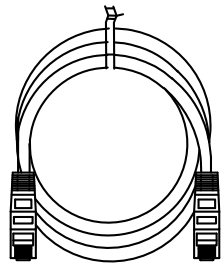
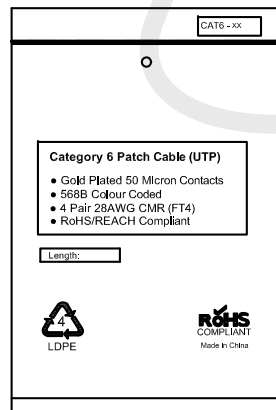


MARKING:
 Phantom Cables 550MHz UTP CAT6 4PR 24AWG Stranded FT4/CMR 75 C ETL
 Verified to ANSI/TIA-568-C.2 & ISO/IEC 11801 c(UL) E345576

P1	P2	T568B WIRING
1	1	WHITE/ORANGE
2	2	ORANGE
3	3	WHITE/GREEN
6	6	GREEN
4	4	BLUE
5	5	WHITE/BLUE
7	7	WHITE/BROWN
8	8	BROWN



- ELECTRICAL TEST:**
- 100% Continuity tested for open, short & mis-wired
 - 100% Fluke Cat6 Patch Cable Test



All cables 15ft long and shorter are to be additionally master bagged in a pack of 10

TOLERANCE GENERALES											
Cut line LENGTH M	0	6	11	21	50	CABLE LENGTH M	1	501	5001	10001	10001
	5	10	20	50			500	5000	10000	30000	
TOLERANCE mm±	10	20	30	40	50	TOLERANCE mm±	20	30	50	100	

