



RJ45 Cat5e 350MHz No Boot Patch Cable

CAT5ENB-xxYY - Specifications

Description

This Cat5e ethernet cable consists of a RJ45 male on one end and a RJ45 male on the other. It is typically used for ethernet network connections such as patch panels, switches and computers to routers.

Physical Characteristics

Colors Available	Black / Blue / Green / Grey / Orange / Purple / Red / White / Yellow
Connector Plating	Gold Plated 50 Micron
Cable Diameter	5.3mm
Wire Gauge	24AWG Stranded
Shielding	UTP (Unshielded)
Pairs	4
Fire Rating	CM
Color Code	568B
Molding	Molded Tab Style Strain Relief
Jacket Temperature Rating	+75 deg C
Jacket Type	PVC

Connectors

Connector A	RJ45 Long Body Male
Connector B	RJ45 Long Body Male

Performance

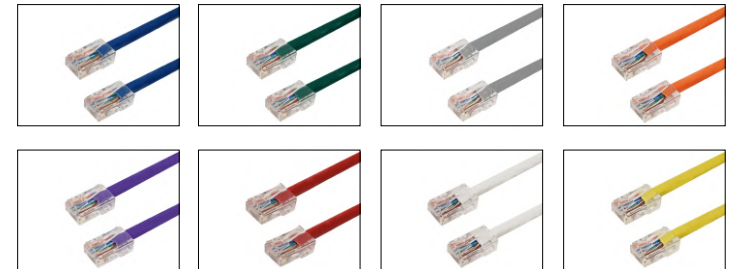
CAT5e Fluke® Channel Test	Yes
Frequency	350 MHz

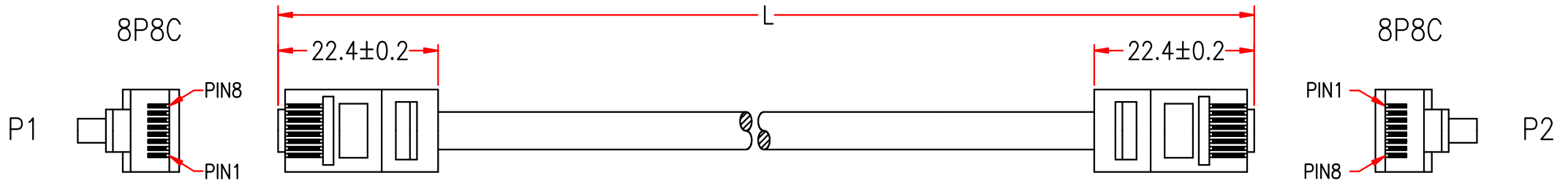
Approvals/Product Support

c(UL)us	Yes - Cable
ETL Verified	Yes
ANSI/TIA - 568 - C.2	Yes
RoHS, Reach, Conflict Materials	Yes
Country of Origin	Vietnam

Warranty Information

Warranty	Limited Lifetime
----------	------------------



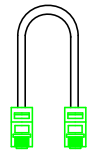


MARKING :

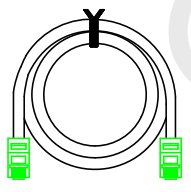
Phantom Cables 350MHz UTP CAT5e 4PR 24AWG Stranded CM 75°C ETL Verified
to TIA/EIA-568-C.2 & RoHS Compliance c(UL)us E345576 BATCH No.



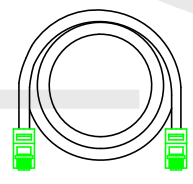
PACKING A: <2FT



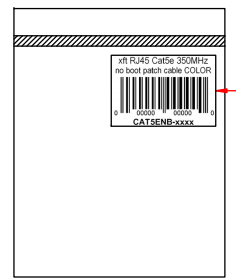
PACKING B: 2FT~12FT



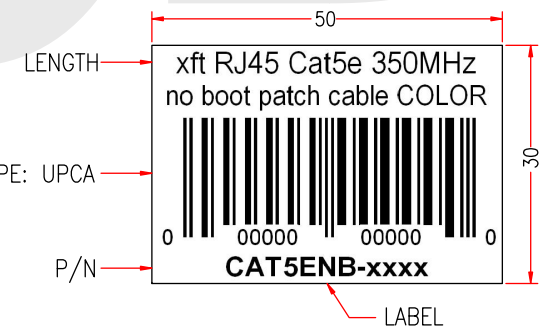
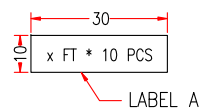
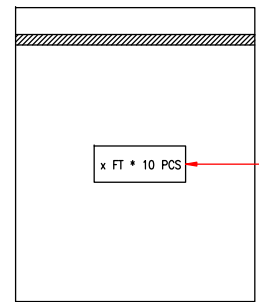
PACKING C: >12FT



PACKING:
1PC IN A POLYBAG



PACKING:
10PCS IN A BIG BAG ≤15FT



BARCODE TYPE: UPCA

P1	P2
1	1 WHITE/ORANGE
2	2 ORANGE
3	3 WHITE/GREEN
6	6 GREEN
4	4 BLUE
5	5 WHITE/BLUE
7	7 WHITE/BROWN
8	8 BROWN

Test condition:

- * 100% open & short test
- * Must pass DSX 8000 Fluke CAT5E Channel (random test)

