



DVI-A Male to HD15 VGA Female Adapter

AD-DVI-VGA-1 - Specifications

Description

This adapter consists of a DVI-A male on one end and a VGA female on the other. It is typically used to convert a VGA male cable to a DVI-A male cable.

Physical Characteristics

Color	Black
Connector Plating	Gold

Connector(s)

Connector A	DVI-A Male
Connector B	VGA HD15 Female

Performance

Resolution	Up to 1600 x 1200
------------	-------------------

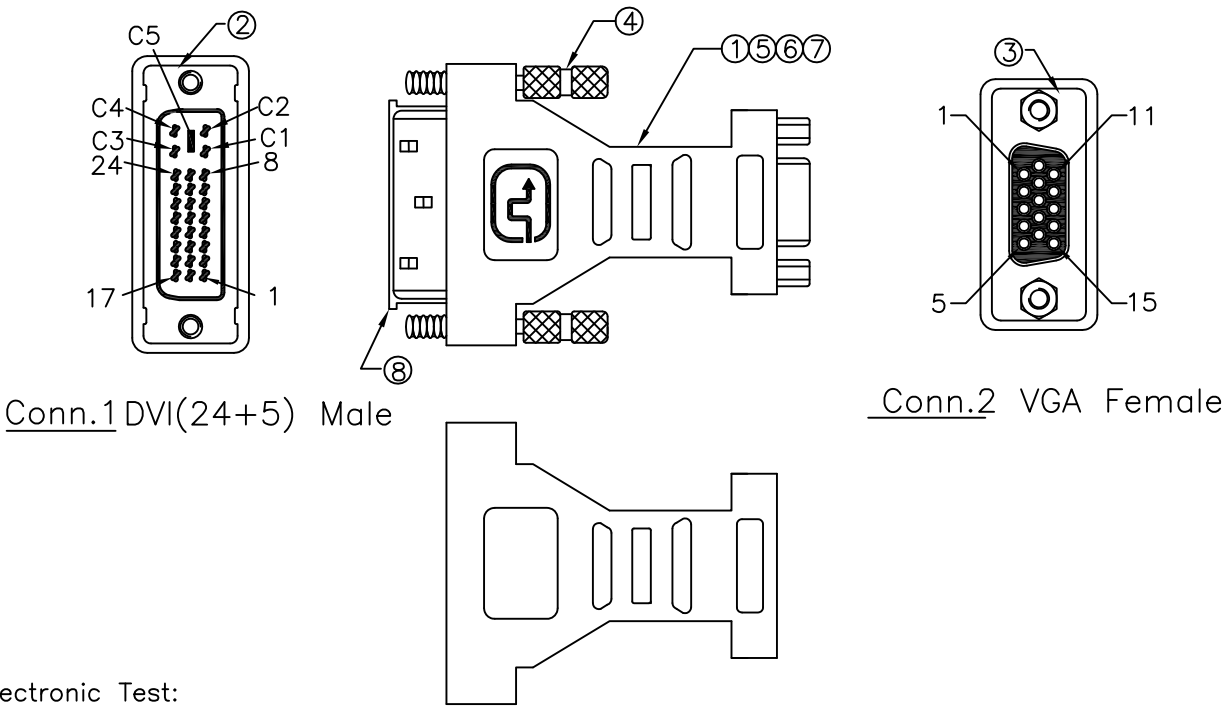
Environmental

RoHS	Yes
Reach	Yes
Conflict Minerals	Yes

Packaging Information

Package Quantity	1
Product Weight	0.13 lbs [0.05 kg]





Conn.1 DVI(24+5) Male

Conn.2 VGA Female

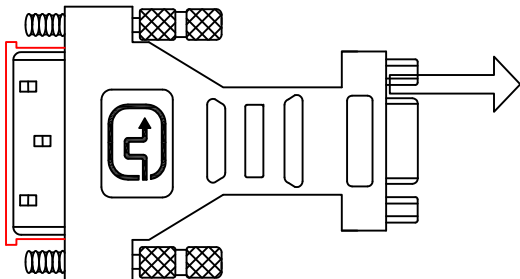
Electronic Test:

1. 100% Test(Open. Short. Miss wire)
2. Contact Resistance : 2 ohm max
3. Insulation Resistance : 5M ohm min
4. Hi-Pot : 100V DC/10ms

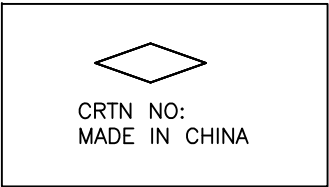
PIN

Conn.1		Conn.2
C 4	_____	13
C 5	_____	6
		7
		8
C 3	_____	3
C 2	_____	2
C 1	_____	1
15	_____	5
		10
14	_____	9
16	_____	14
8	_____	12
7	_____	15
6	_____	Shell
Shell	_____	Shell

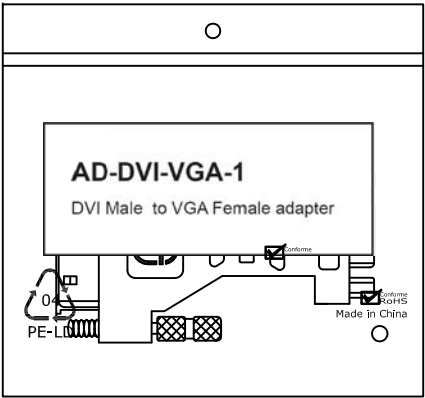
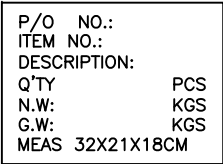
⑧	DVI M Transparent dust cover	1	pcs
⑦	45P BLACK PVC	25	g
⑥	LDPE	5	g
⑤	UL1007 28AWG BLACK L=52MM	1	pcs
④	#4-40UNC 2*23MM NICKEL screw	2	pcs
③	HDB15F Black rubber core welding wire type iron shell before plating gold-plated riveting nut	1	pcs
②	DVI(24+5)M Soldering iron shell type gold plated black rubber core	1	pcs
①	UL1007 28AWG BLACK L=45MM	12	pcs
NO.	DESCRIPTION	Q'TY	UNIT



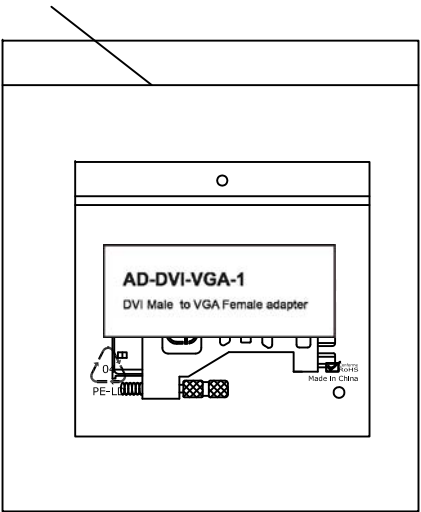
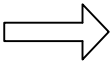
Main mark



side mark

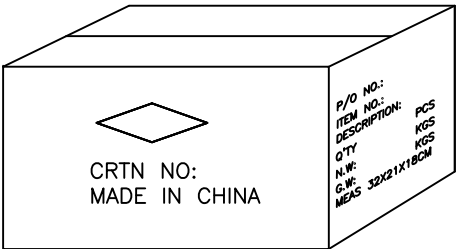


one PCS/BAG
Positive guest labels in the middle of chain bag



10PCS/middle pocket

way of packing
1. As shown are to be packed in cartons with a waterproof bags, each containing 200 PCS,



6	PE BAG 240*160*0.06MM Printed with green logo RoHS...	1/10	pcs
5	White background and black text labels 50*20MM MARK: AD-DVI-VGA-1... (INFI客人)	1	pcs
4	DAY BAG 750*550*0.06MM 不印字	1/200	pcs
3	carton board B3C 300*190MM	2/200	pcs
2	carton A=A 320*210*180MM	1/200	pcs
1	BAG 80*80*0.06MM Printed with green logo RoHS...	1	pcs
NO	DESCRIPTION	Q'TY	UNI