

Light-O-Rama "CPC" Package

4 Ghosts - Assembly Instructions

Included in this Package:

- 4 Coro Ghost - 2 Big and 2 Small - 100 Nodes Each. "Pixel Path" for pixel pushing included on the back of each prop. Big Ghosts (2) - 37" tall x 23.5" wide; Small Ghosts (2) - 30" tall x 23.5" wide
- 8 Strands of White Bullet Pixels - 50 Ct (4" spacing). Sets should be connected to make 100s.
- Pixie4 Controller - Assembled -12V - With White LOR Dangles Included

Optional Package Additions:

- 4 Pixel Extensions - White
- Cat5 Cable (Required for Connection)

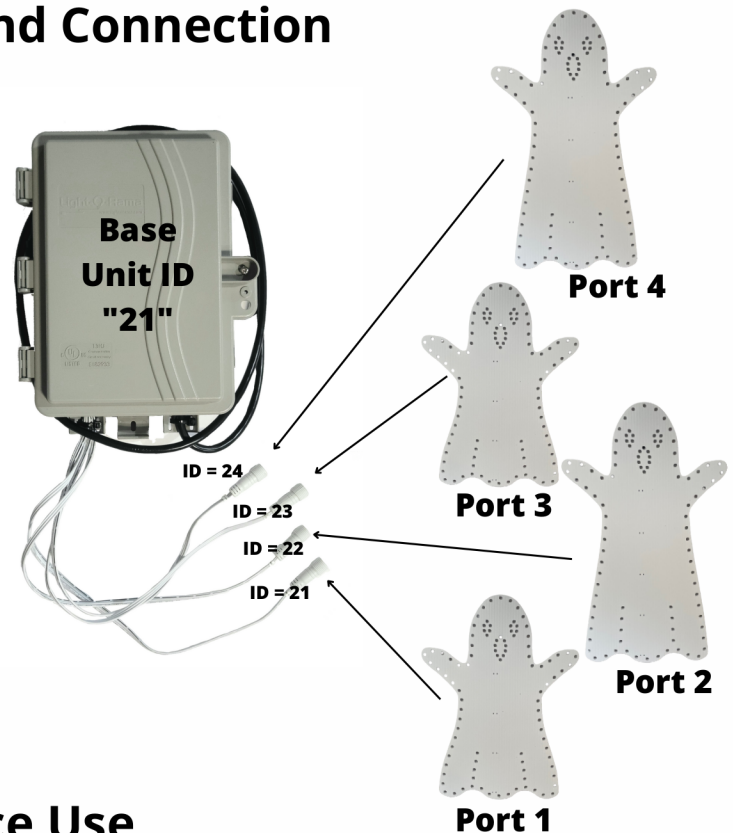
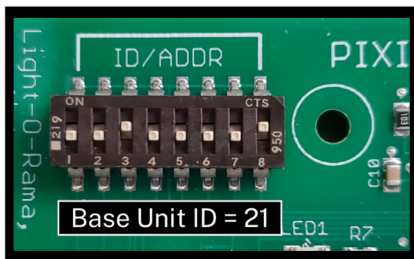
Customer Provided (If Applicable):

- Mounting material for home attachment
- Metal stakes or other ground mounting material

Prop Assembly and Connection

When viewing the ghosts from the back, the Pixel Path "star" (for "start") should be at near the bottom left of the prop, with the pixel path continuing clockwise until it reaches the "square" (for "stop") on the bottom of the prop.

When viewing the ghosts as the audience, the first of the four ghosts should be on the left of a horizontal row or the front of a vertical row. The ghosts are interchangeable in size - any size ghost can be plugged into any port of your Pixie4.



Sequence Use

To use these props with RGBPlus Sequences, the Pixie controller must be connected to the AuxA (computer) or Net 2 (Director) network. You must be using 5.6.8 or higher in order to use RGBPlus Sequences with a computer. Effects for these props are not included in RTG or YCM sequences.

To use with RGBPlus sequences, the Pixie4 should be given a base Unit ID of 21; The four Unit IDs for the four ports of this Pixie4 controller (and therefore your ghosts) must be 21, 22, 23 and 24, both physically on your controller and in your Preview, which correspond to ports 1, 2, 3, and 4 of your Pixie4.

Scan the QR code to learn more about using this package with RGBPlus Sequences or modifying the IDs and Networks for your own custom layout.

