

Light-O-Rama "CPC" Package 4 Candy Canes - Assembly Instructions

Included in this Package:

- 4 Coro Candy Canes - 48 Nodes Each. Left OR Right Facing ("Left" Pictured below). Approx. 36" tall.
- 4 Strands of White Bullet Pixels - 50 Ct (4" spacing).
- Pixie4 Controller - Assembled -12V - With White Dangles Included

Optional Package Additions:

- 4 Pixel Extensions - White
- Cat5 Cable (Required for Connection)

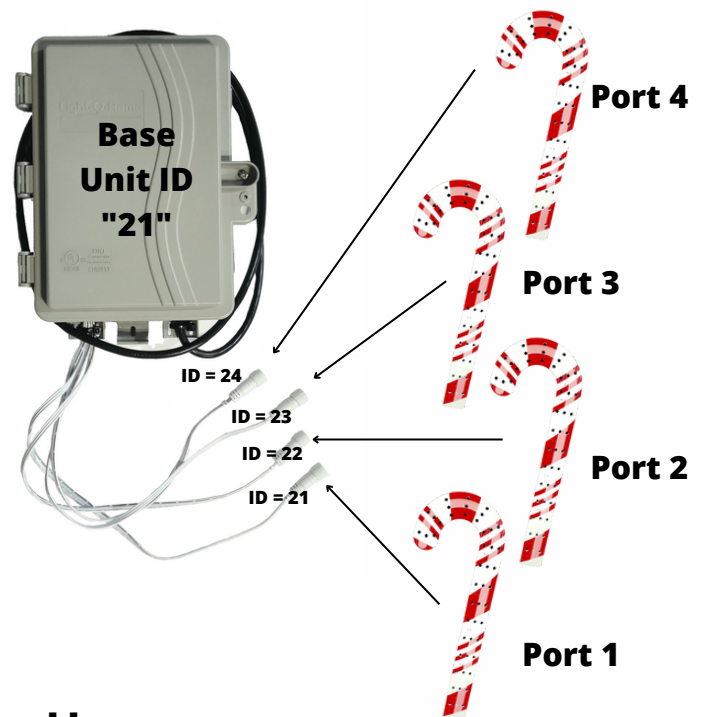
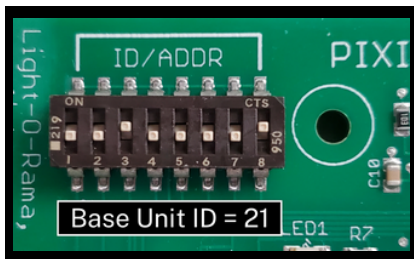
Customer Provided (If Applicable):

- Mounting material for home attachment
- Metal stakes or other ground mounting material

Prop Assembly and Connection

When viewing the candy cane from the back, the Pixel Path "star" (for "start") should be at the bottom of the prop on the outer side of the candy cane, with the pixel path continuing until it reaches the "square" (for "stop") on the bottom inside of the prop.

When viewing the candy canes as the audience, the first of the four candy canes should be on the left of a horizontal row or the front of a vertical stack.



Sequence Use

To use these props with RGBPlus Sequences, the Pixie controller must be connected to the AuxA (computer) or Net 2 (Director) network. You must be using 5.6.8 or higher in order to use RGBPlus Sequences with a computer. Effects for these props are not included in RTG or YCM sequences.

To use with RGBPlus sequences, the Pixie4 should be given a base Unit ID of 21; The four Unit IDs for the four ports of this Pixie4 controller (and therefore your candy canes) must be 21, 22, 23 and 24, both physically on your controller and in your Preview, which correspond to ports 1, 2, 3, and 4 of your Pixie4.

Scan the QR code to learn more about using this package with RGBPlus Sequences or modifying the IDs and Networks for your own custom layout.

