

# **Solar Panel Pole Mount**

SOL-TOP-250

## **User's Manual**

## Table of Contents

<b>MOUNTING POLE REQUIREMENTS</b>	<b>3</b>
<b>SOL-TOP-250 ASSEMBLY</b>	<b>4</b>
ATTACHING THE U-BOLTS TO THE POLE MOUNTING FRAME	4
SELECT MOUNTING FRAME ANGLE	4
ATTACH SOL-TOP-250 TO MOUNTING PIPE	5
ATTACH STRUT CHANNEL	6
ATTACH SOLAR PANEL(S)	6
<b>TROUBLESHOOTING AND SUPPORT</b>	<b>7</b>
SUPPORT	7
WARRANTY	7
RESTRICTIONS	8
WARRANTY CLAIMS & RETURN PROCEDURES	8
DISCLAIMER	8
LIMITATION OF LIABILITY	9

## MOUNTING POLE REQUIREMENTS

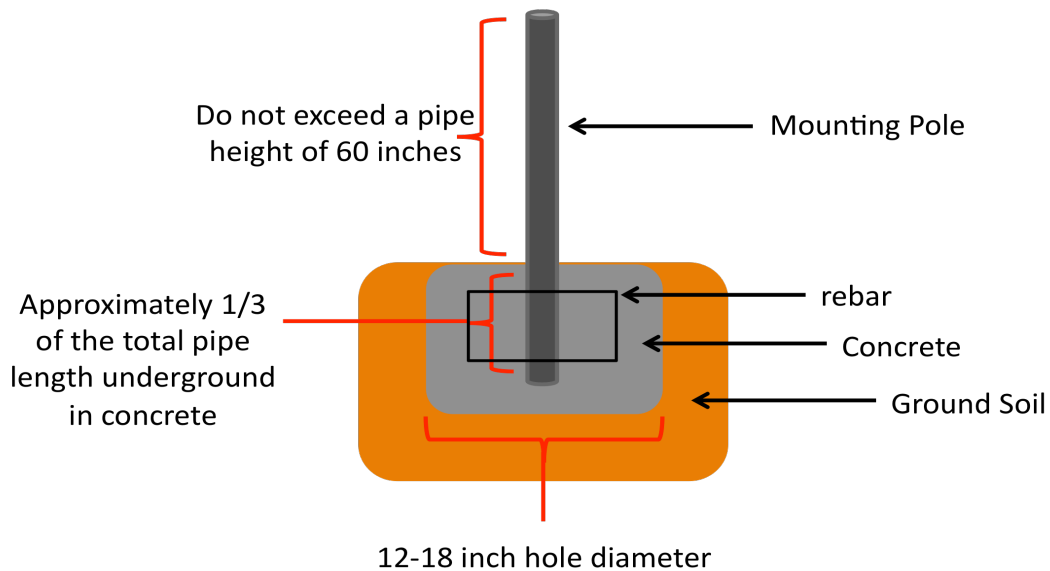
The SOL-TOP-250 solar panel is designed to be mounted to 1 ½” or 2” Schedule 40 Steel Pipe. The steel pipe is not included and can be purchased at nearly any hardware store. Any steel pipe with an outer diameter between 1.90” and 2.50” can be used, but it is the end user’s responsibility to confirm that the steel pipe can withstand the wind loading conditions in the installation area. See Table 1 below for the recommended pole/pipe size.

Recommended Mounting Pole Size*	Solar Panel Array Size
1 ½” Schedule 40 Steel Pipe	Maximum 125 Watts
2” Schedule 40 Steel Pipe	Maximum 250 Watts

**Table 1** \*1

\*1½” Schedule 40 Steel Pipe has an outer diameter of 1.90” and 2” Schedule 40 Steel Pipe has an outer diameter of 2.38”.

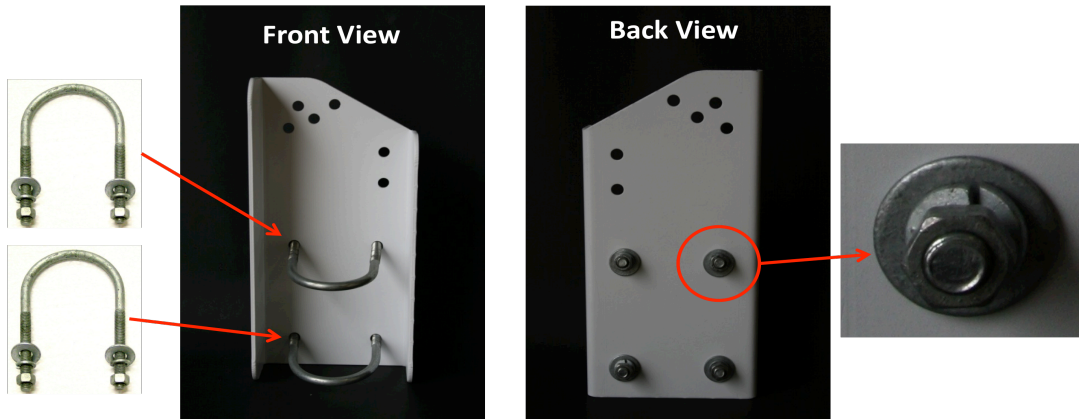
It is strongly recommended that the mounting pipe is secured into the earth with concrete and rebar. Consult local building codes for the required depth and width of pipe mounting footing. Wind loading and soil conditions vary by location. See Figure 1 below for general pipe mounting guidelines.



**Figure 1:** Pipe installation guide lines.

## SOL-TOP-250 ASSEMBLY

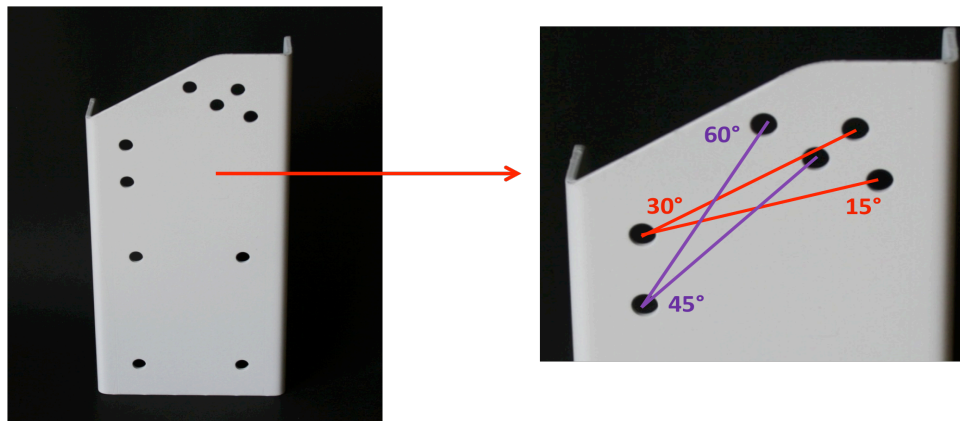
### ATTACHING THE U-BOLTS TO THE POLE MOUNTING FRAME



**Figure 2:** Attach u-bolts to pole mounting frame

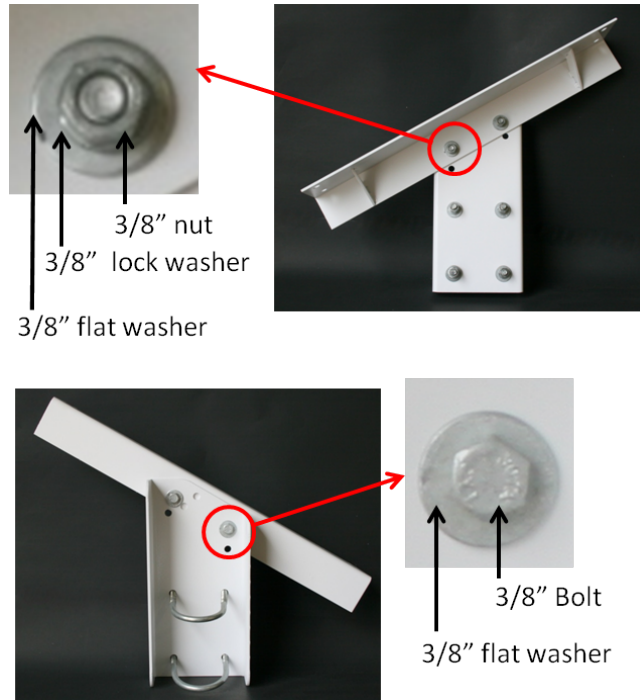
Insert the two included u-bolts into their mounting holes on the pole mounting frame. Attach a 3/8" flat washer, 3/8" lock washer and a 3/8" nut to the four u-bolt threads. Do not tighten the nuts on the u-bolts until the pole mounting frame is on the mounting pole. See Figure 2 above.

### SELECT MOUNTING FRAME ANGLE



**Figure 3:** Select mounting angle

Select the mounting angle for the solar panel(s). The angle options are 15, 30, 45 and 60 degrees. Choose the angle that most closely matches the latitude of the installation location. For example, the latitude of Los Angeles, California, USA is 34 degrees and, in this case, the 30 degree mounting angle would be selected.

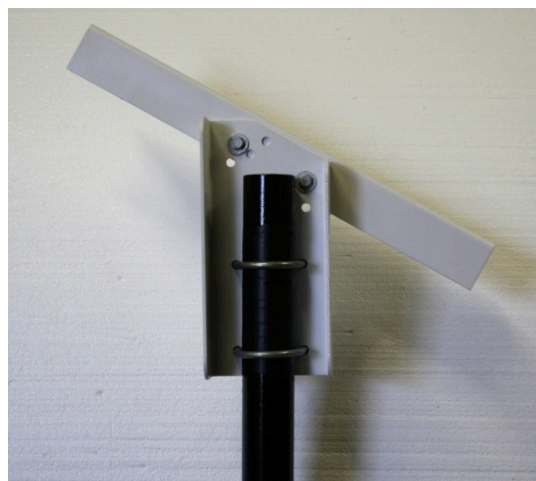


**Figure 4:** Attach upper mounting frame to pole mounting frame

After the mounting angle has been selected, attach the upper mounting frame to the pole mounting frame. To do this use the two included 3/8"x 1" bolts. Place a 3/8" flat washer on each side of the bolt. Use a 3/8" lock washer in between the flat washer and 3/8" nut. See Figure 4 above.

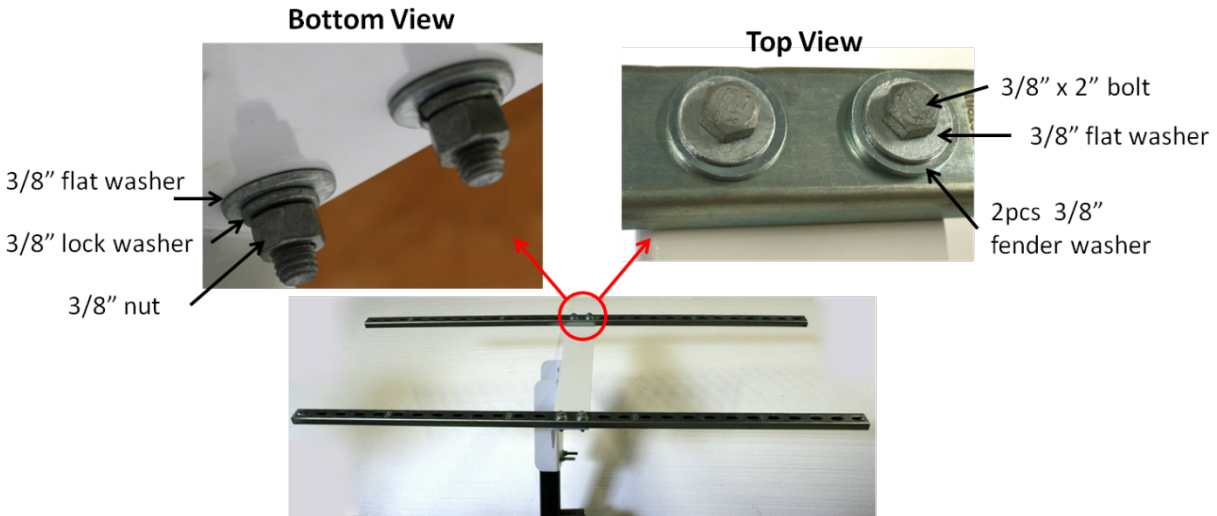
#### **ATTACH SOL-TOP-250 TO MOUNTING PIPE**

After the upper mounting frame is securely bolted to the pole-mounting frame, bolt the unit to the mounting pole/pipe using the u-bolts. See Figure 5 below.



**Figure 5:** Attach SOL-TOP-250 to mounting pipe

## ATTACH STRUT CHANNEL



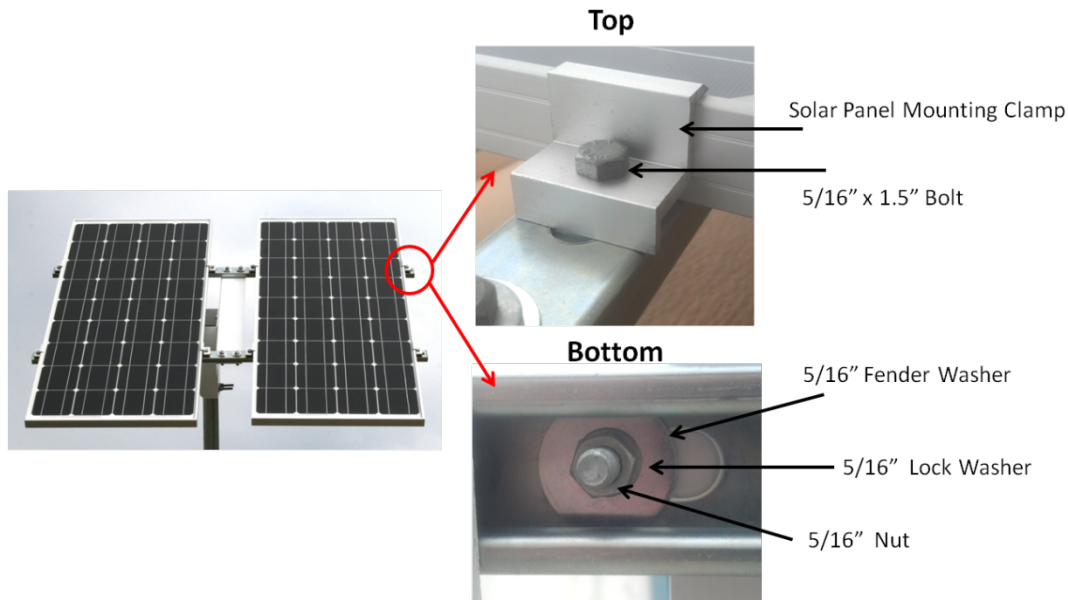
**Figure 6:** Attach strut channel to mounting frame

Cut the two 60" pieces of included channel strut to length to fit the mounting surface area of the solar panel(s). For example, mounting one 30 Watt solar panel will require far less channel strut compared to mounting two 100 Watt solar panels. Next, bolt the center of each channel strut to the pole mounting frame.

Bolting instructions: Place one 3/8" flat washer and 2pcs of 3/8" fender washers on each 3/8" x 2" bolt. Place the bolt with washers through the channel strut and then through their respective holes on the pole mounting frame. Tighten the bolt using a 3/8" flat washer, 3/8" lock washer and 3/8" nut. See Figure 6 above.

## ATTACH THE SOLAR PANEL(S)

Using the included solar panel mounting clamps and fasteners, secure the solar panel(s) to the steel strut. See figure 7 below.



**Figure 7:** Mount solar panel(s) to channel strut

## TROUBLESHOOTING AND SUPPORT

### SUPPORT

If you are experiencing technical problems, and cannot find a solution in this manual, you can contact Windy Nation Inc. for further assistance.

- Call: (805) 323-6445
- Email: [support@windynation.com](mailto:support@windynation.com)
- Write: 398 South Kalorama Street, Unit C, Ventura, CA 93001

### WARRANTY

Windy Nation warrants that the SOL-TOP-250 (the "Product"), will be free from manufacturing defects in materials and workmanship under normal authorized use consistent with product instructions for a period of five (5) years from the date the original purchaser ("Customer") receives the Product (the "Warranty Period"). This warranty extends only to the original purchaser. The Customer's sole and exclusive remedy and the entire liability of Windy Nation, its suppliers and affiliates for breach of the warranty is, at Windy Nation's option, either (i) to replace the Product (or defective component part(s)) with a new or reconditioned Product (or component part(s)); (ii) to repair the reported problem; or (iii) to refund the purchase price of the Product. Repaired or replaced products are warranted for the remainder of the original warranty period only. No employee, agent, dealer or other person is authorized to give any warranties on behalf of Windy Nation not expressly set forth in this limited warranty.



### **Restrictions**

This warranty does not cover corrosion. No warranty will apply if the Product (i) has been altered or modified except by Windy Nation; (ii) has not been installed, operated, repaired, or maintained in accordance with instructions supplied by Windy Nation; (iii) has been subjected to abnormal physical, thermal or electrical stress, misuse, negligence, or accident. If Windy Nation determines that the problem with the Product is not due to a manufacturing defect in Windy Nation's workmanship or materials, or otherwise does not qualify for warranty repair, then the Customer will be responsible for the costs of all necessary repairs and expenses incurred by Windy Nation.

### **Warranty Claims & Return Procedures**

To be eligible for service under this warranty, the Customer must submit a service request within the Warranty Period by contacting Windy Nation in writing or via telephone and obtaining a Returned Materials Authorization ("RMA") number. This RMA must be obtained before returning any product under this warranty. Notification must include a description of the alleged defect, the manner in which the Product was used, the serial number (if applicable), and the original purchase date in addition to the name, address, and telephone number of the Customer. Within five (5) business days of the date of notification, Windy Nation will provide the Customer with an RMA number and the location to which the Customer must return the defective Product. Any Product returned for warranty service shall be shipped at the expense and risk of the Customer. The Customer must return the entire Product kit (or, if authorized by Windy Nation, the defective component parts), within fifteen (15) days after issuance of the RMA number. Windy Nation will be under no obligation to accept any returned Product that does not have a valid RMA number. Customer's failure to return the Product within fifteen (15) days of its receipt of an RMA number may result in cancellation of the RMA. All parts that Windy Nation replaces shall become Windy Nation's property on the date Windy Nation ships the repaired Product or part back to the Customer. Windy Nation will use all reasonable efforts within thirty (30) days of receipt of the defective Product to repair or replace such Product. If a warranty claim is invalid for any reason, the Customer will be charged at Windy Nation's then-current rates for services performed and will be charged for all necessary repairs and expense incurred by Windy Nation. If Windy Nation determines that a warranty claim is valid, it will ship the repaired or replaced Product to Customer at Windy Nation's cost.

### **Disclaimer**

EXCEPT FOR THE EXPRESS LIMITED WARRANTY SET FORTH IN THE PREVIOUS PARAGRAPH, WINDY NATION DISCLAIMS ALL WARRANTIES, EXPRESS, IMPLIED AND STATUTORY INCLUDING, WITHOUT LIMITATION, THE IMPLIED WARRANTIES OF MERCHANTABILITY AND FITNESS FOR A PARTICULAR PURPOSE WITH RESPECT TO ANY PRODUCTS PROVIDED BY WINDY NATION. NO ORAL OR WRITTEN INFORMATION OR ADVICE GIVEN BY WINDY NATION, ITS DEALERS, DISTRIBUTORS, AGENTS OR EMPLOYEES SHALL IN ANY WAY INCREASE THE SCOPE OF THIS WARRANTY. WINDY NATION DOES NOT



WARRANT THAT THE QUALITY OR PERFORMANCE OF THE PRODUCTS WILL MEET YOUR REQUIREMENTS OR THAT YOU WILL BE ABLE TO ACHIEVE ANY PARTICULAR RESULTS FROM USE OR MODIFICATION OF THE PRODUCTS.

Some jurisdictions do not allow the limitation or exclusion of implied warranties or how long an implied warranty may last, so the above limitations may not apply to you. In any such jurisdiction, the warranty shall be limited to the minimum warranty and period required by law.

WINDY NATION EXPRESSLY DISCLAIMS ALL LIABILITY FOR BODILY INJURIES OR DEATH THAT MAY OCCUR, DIRECTLY OR INDIRECTLY, BY USE OF THE PRODUCT BY ANY PERSON.

#### **Limitation of Liability**

UNDER NO CIRCUMSTANCES WILL WINDY NATION OR ITS AFFILIATES OR SUPPLIERS BE LIABLE OR RESPONSIBLE FOR ANY LOSS OF USE, INTERRUPTION OF BUSINESS, LOST PROFITS, LOST DATA, OR INDIRECT, SPECIAL, INCIDENTAL, OR CONSEQUENTIAL DAMAGES OF ANY KIND REGARDLESS OF THE FORM OF ACTION, WHETHER IN CONTRACT, TORT (INCLUDING NEGLIGENCE), STRICT LIABILITY OR OTHERWISE, EVEN IF WINDY NATION OR ITS AFFILIATE OR SUPPLIER HAS BEEN ADVISED OF THE POSSIBILITY OF SUCH DAMAGE.

Some states do not allow the exclusion or limitation of incidental or consequential damages, so these limitations may not apply to you. Neither Windy Nation nor its affiliates or suppliers will be held liable or responsible for any damage or loss to any items or products connected to, powered by or otherwise attached to the Product. The total cumulative liability to Customer, from all causes of action and all theories of liability, will be limited to and will not exceed the purchase price of the Product paid by Customer. This warranty gives the Customer specific legal rights and the Customer may also have other legal rights that vary from state to state.