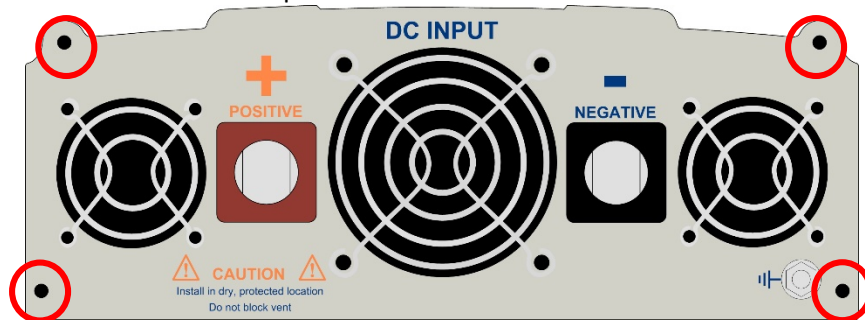


3000W INVERTER FUSE REPLACEMENT

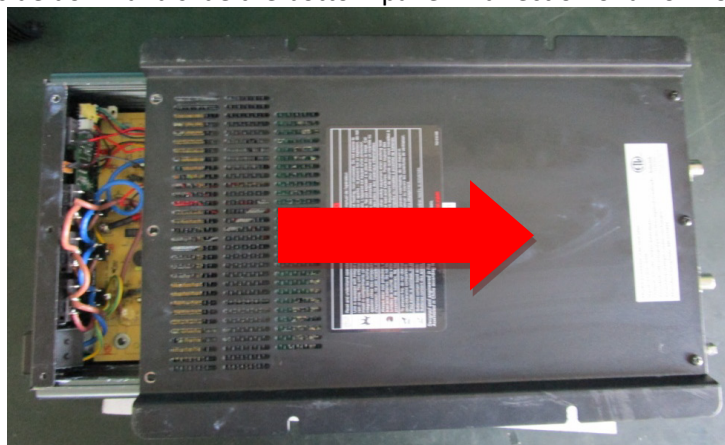
1. Turn the inverter upside down and remove the three screws on the AC side of the bottom panel as shown below.



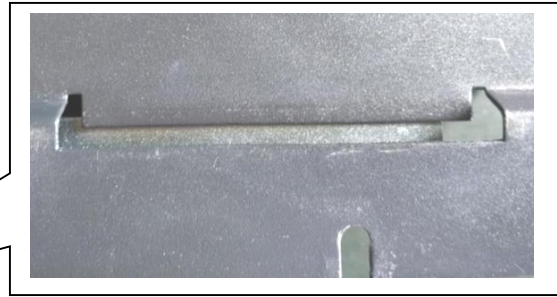
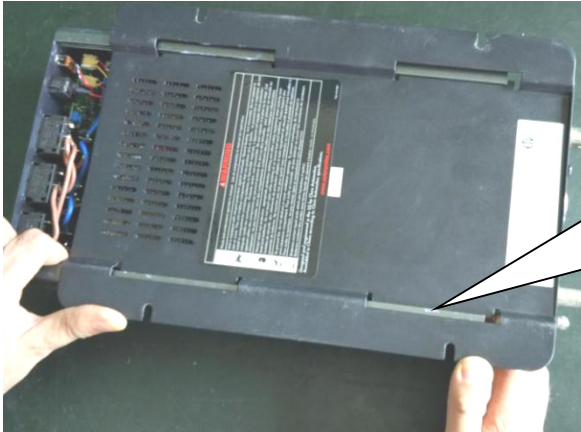
2. Remove all four screws on the DC end panel as shown below.



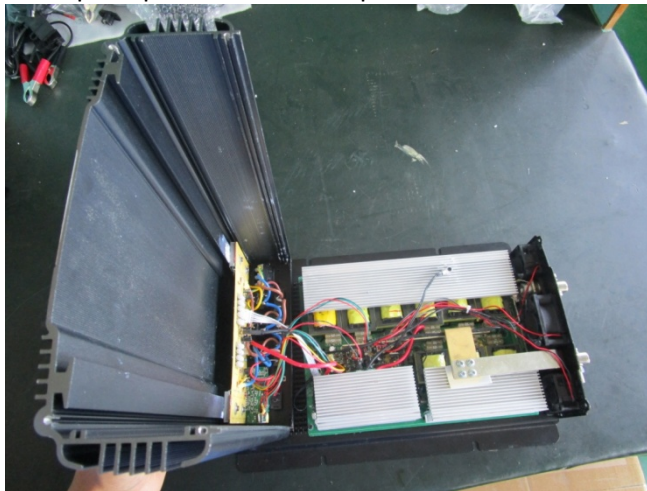
4. Turn the inverter upside down and slide the bottom panel in direction of arrow for 4" (100mm) as shown below.



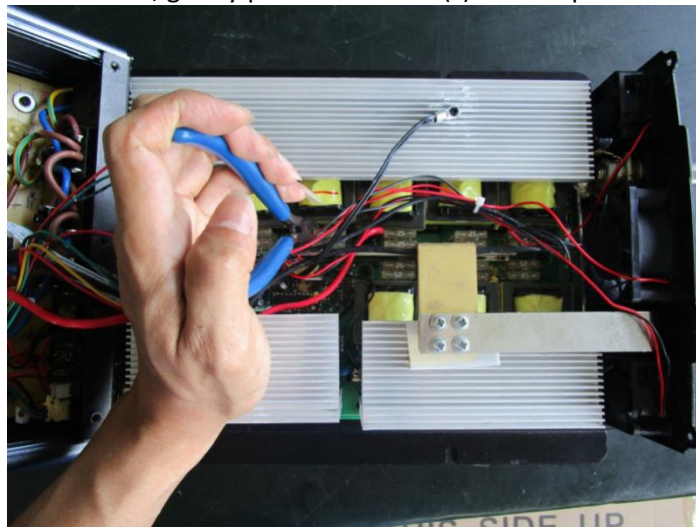
5. Pull the enclosure side applying force, until the bottom panel is removed from the groove of the enclosure as shown below.



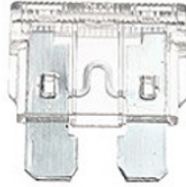
6. Continue to remove the entire bottom panel from each side of the enclosure until the enclosure top and bottom panel are disconnected.
7. Right-side up the inverter and pull up the enclosure top as shown below.



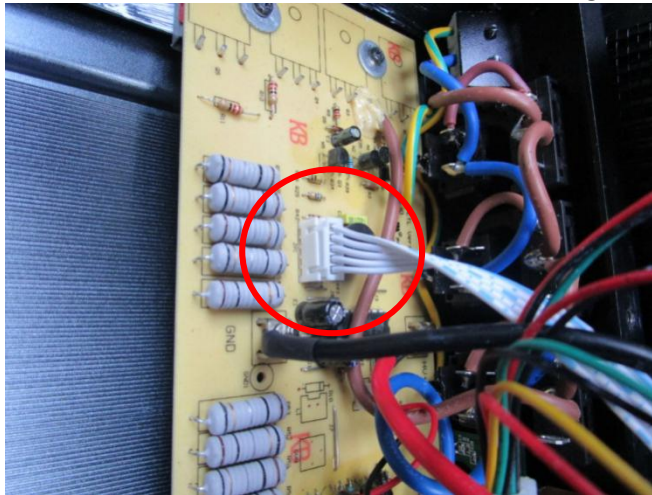
8. Using nipper pliers or a similar tool, gently pull out the fuse(s) to be replaced.



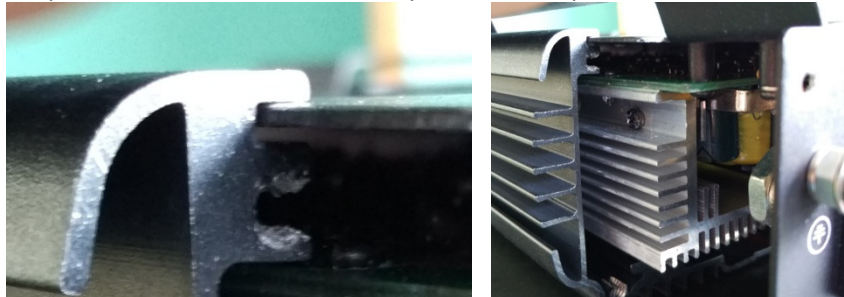
9. Replace the fuse with the same specification blade car fuse (25A / 32V).
Note: Prior to installing the new fuse, inspect the fuse holder for deformation or loosening of contacts. If evident, use pliers to tighten the fuse holder



10. Locate the cable shown below and ensure the connection is secure and tight.



11. Realign the bottom panel with the enclosure as explained in Step 4 & 5



12. Replace the screws removed in Steps 1 & 2.