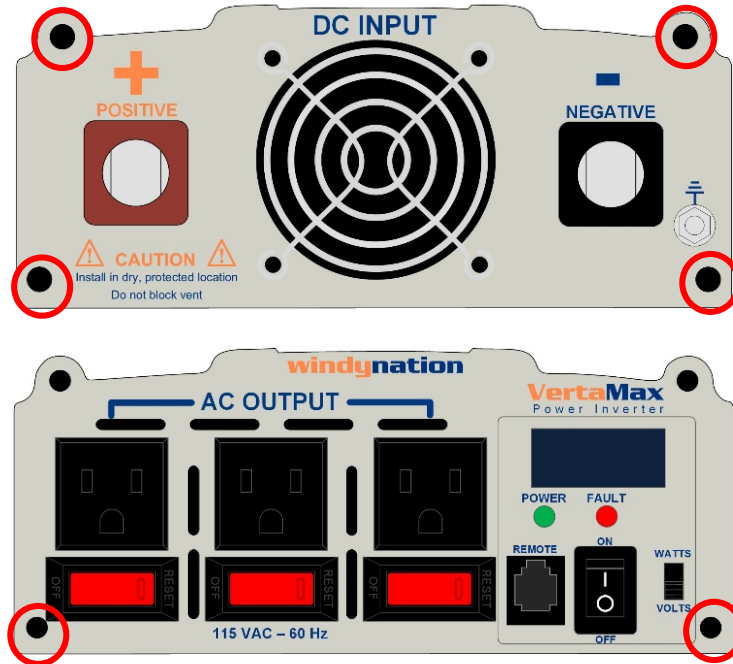
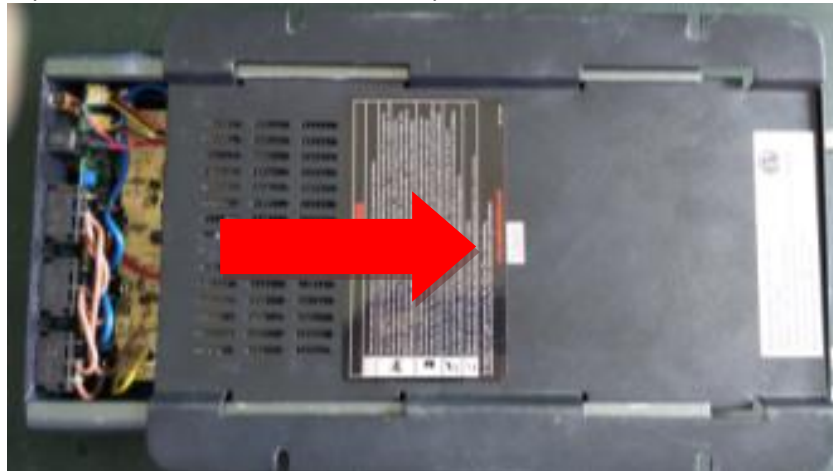


1500W INVERTER FUSE REPLACEMENT

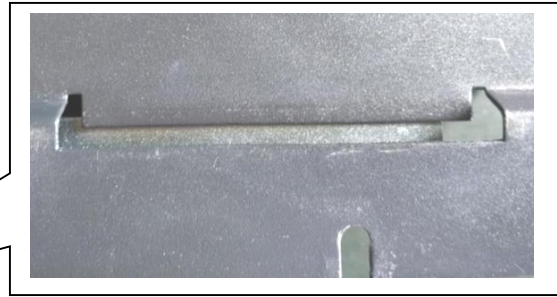
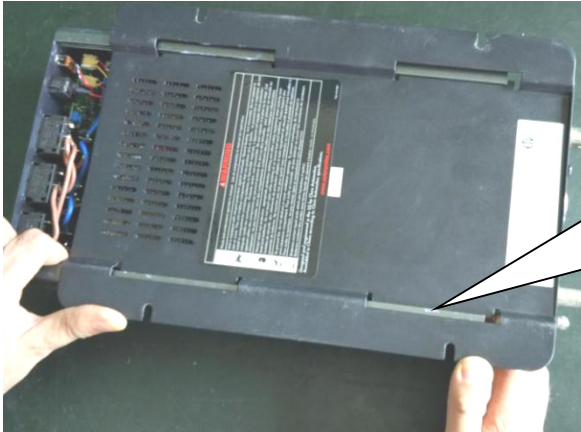
1. Remove all four screws on the DC end panel and the two bottom screws on the AC end panel as shown below.



2. Turn the inverter upside down and slide the bottom panel in direction of arrow for 2" (50mm) as shown below.



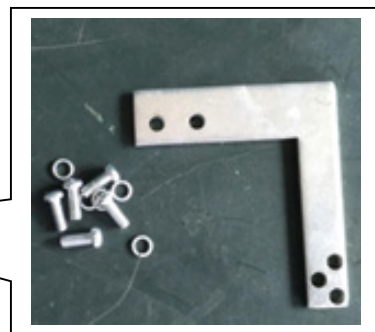
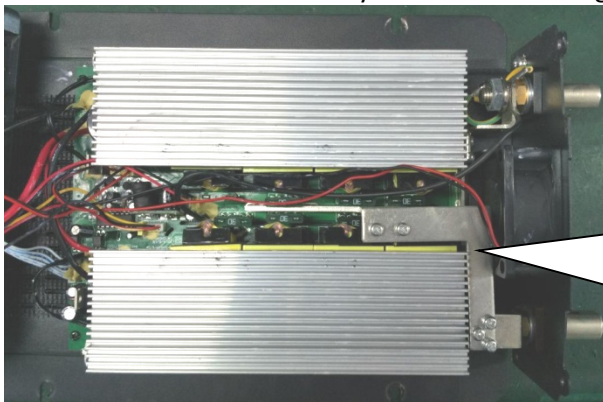
3. Pull the enclosure side applying force, until the bottom panel is removed from the groove of the enclosure as shown below.



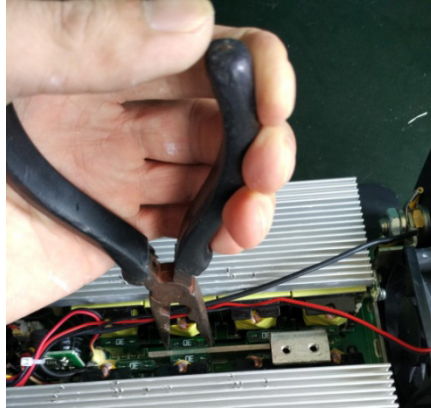
4. Continue to remove the entire bottom panel from each side of the enclosure until the enclosure top and bottom panel are disconnected.
5. Right-side up the inverter and pull up the enclosure top as shown below.



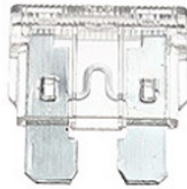
6. With a screwdriver remove the conductive "L-brace" as shown below.
Note: Take care to not lose any of the screws being removed.



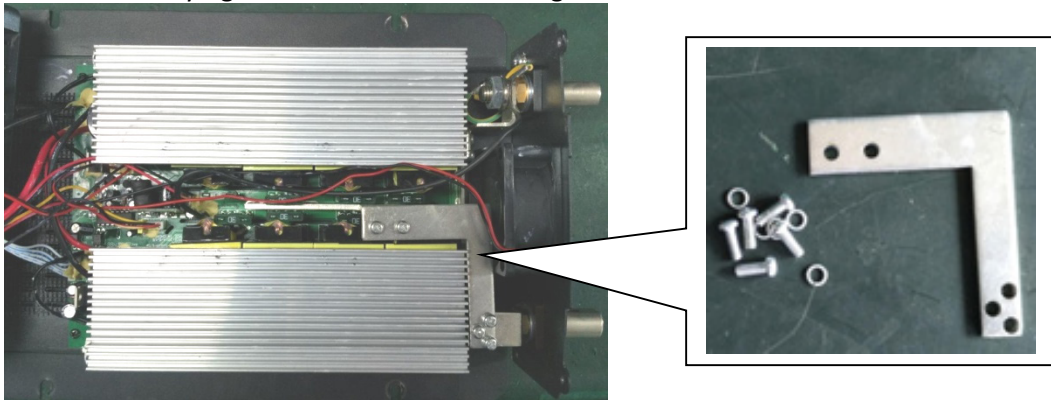
7. Using nipper pliers or a similar tool, gently pull out the fuse(s) to be replaced.



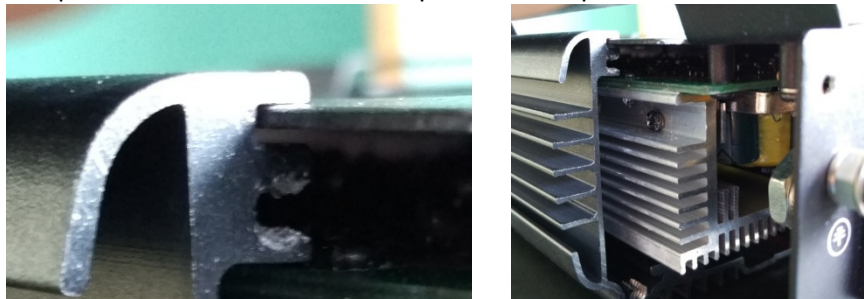
8. Replace the fuse with the same specification blade car fuse (25A / 32V).
Note: Prior to installing the new fuse, inspect the fuse holder for deformation or loosening of contacts. If evident, use pliers to tighten the fuse holder



9. Re-install the conductive “L-brace” from Step 6
Note: Be sure to securely tighten the screws to ensure good contact.



10. Realign the bottom panel with the enclosure as explained in Step 2 & 3



11. Secure end caps as removed in Step 1