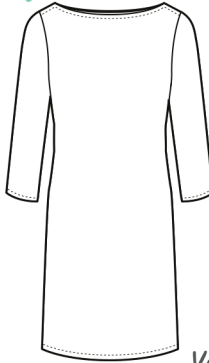
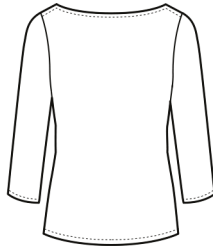


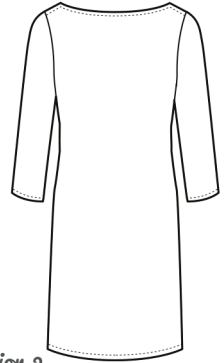
The Edie Top/Dress



Version 1



Version 2



Body measurements (inches):

	8	10	12	14	16	18	20
Bust	33	35	37	39	41	43	45
Waist	26	28	30	32	34	36	38
Hip	36	38	40	42	44	46	48

Fabric required (metres):

Requirements are given for fabrics with directional print. If your fabric isn't directional, you may need less fabric. You will also need a 1m of 12mm wide iron-on bias interfacing.

Version 1							
1.15m wide	1.4	1.4	1.4	1.4	2.1	2.1	2.1
1.40m wide	1.4	1.4	1.4	1.4	1.4	1.4	1.4
Version 2							
1.15m wide	1.7	1.7	1.7	2.7	2.7	2.7	2.7
1.40m wide	1.7	1.7	1.7	1.7	1.7	1.7	1.7

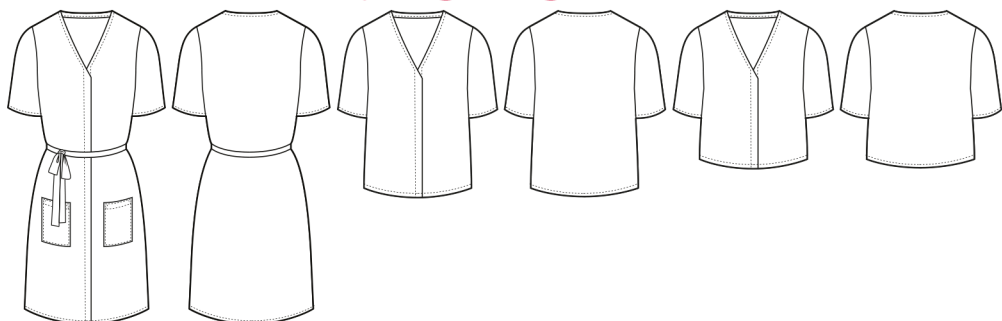
Finished garment (inches):

Bust	31	33	35	37	39	41	43
Waist	28 ^{3/4}	30 ^{3/4}	32 ^{3/4}	34 ^{3/4}	36 ^{3/4}	38 ^{3/4}	40 ^{3/4}
Hip	33	35	37	41	41	43	45
Back length V1*	23 ^{3/4}	24	24 ^{1/4}	24 ^{3/4}	24 ^{3/4}	25	25 ^{1/4}
Back length V2*	34 ^{1/2}	34 ^{3/4}	35	35 ^{1/2}	35 ^{1/2}	35 ^{3/4}	36

*centre back neck to centre back hem

The Edie Top/Dress has negative ease, meaning the finished garment measurements will be smaller than the body measurements.

The Dana Dress



Version 1

Version 2

Version 3

Body measurements (inches):

	8	10	12	14	16	18	20
Bust	33	35	37	39	41	43	45
Waist	26	28	30	32	34	36	38
Hip	36	38	40	42	44	46	48

Fabric required (metres):

Requirements are given for fabrics with directional print. If your fabric isn't directional, you may need less fabric. You will also need 1m (V1), 0.5m (V2) or 0.4m (V3) of lightweight interfacing, 8 x 10mm buttons (V1), 5 x 10mm buttons (V2) or 3 x 10mm buttons (V3) as well as a 12mm press stud for all versions.

Version 1

1.15m wide	3.2	3.2	3.2	3.2	3.2	3.2	3.2
1.40m wide	2.75	2.75	2.9	2.9	3.0	3.0	3.0

Version 2

1.15m wide	2.2	2.2	2.2	2.2	2.2	2.2	2.2
1.40m wide	1.5	1.5	1.7	2.0	2.0	2.0	2.0

Version 3

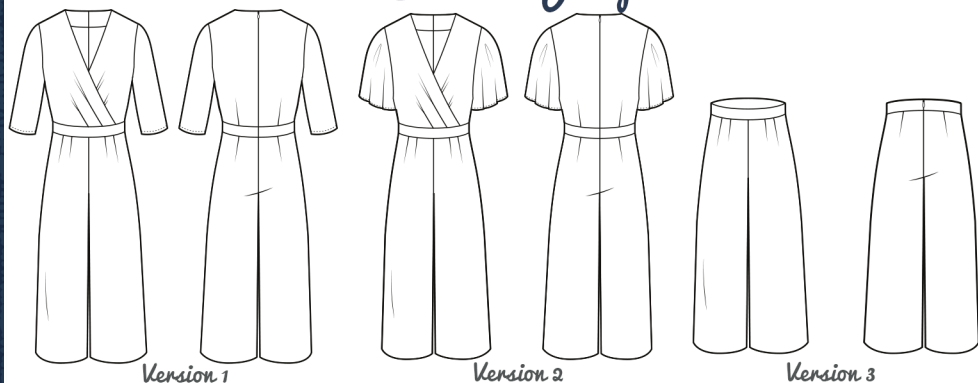
1.15m wide	2.0	2.0	2.0	2.0	2.0	2.0	2.0
1.40m wide	1.4	1.4	1.5	1.8	1.8	1.8	1.8

Finished garment (inches):

Bust	38	40	42	44	46	48	50
Waist	40	42	44	46	48	50	52
Hip	43	45	47	49	51	53	55
Back length V1*	39½	39¾	40	40¼	40½	40¾	41
Back length V2*	22½	22¾	23	24¼	23½	23¾	24
Back length V3*	17¼	17½	17¾	18	18¼	18½	18¾

*centre back neck to centre back hem

The Camille Jumpsuit



Version 1

Version 2

Version 3

Body measurements (inches):

	8	10	12	14	16	18	20
Bust	33	35	37	39	41	43	45
Waist	26	28	30	32	34	36	38
Hip	36	38	40	42	44	46	48

Fabric required (metres):

Requirements are given for fabrics with directional print. If your fabric isn't directional, you may need less fabric. You will also need a 22" invisible zip for V1 and 2, or a 9" invisible zip for V3, 0.7m of lightweight fusible interfacing for V1 and 2, or 0.2m for V3. V1 and 2 require 1m of cotton stay tape.

Version 1

1.15m wide	4.1	4.1	4.1	4.4	4.4	4.5	4.5
1.40m wide	3.0	3.6	3.6	3.6	4.0	4.0	4.0

Version 2

1.15m wide	4.3	4.3	4.3	4.75	4.75	5.0	5.0
1.40m wide	3.2	3.75	3.75	3.75	4.5	4.5	4.5

Version 3

1.15m wide	2.8	2.8	2.8	3.0	3.0	3.2	3.2
1.40m wide	2.3	2.5	2.5	2.5	2.8	2.8	2.8

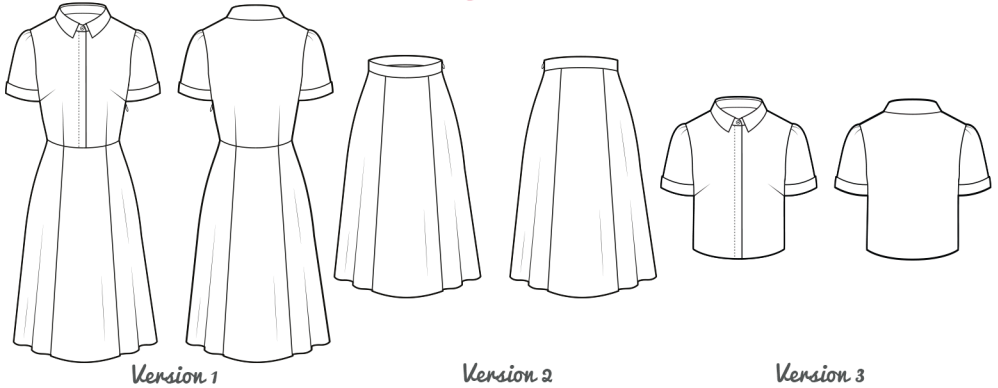
Finished garment (inches):

Bust	35	37	39	41	41	43	48
Waist	26 ^{3/4}	28 ^{3/4}	30 ^{3/4}	32 ^{3/4}	34 ^{3/4}	36 ^{3/4}	38 ^{3/4}
Hip	40 ^{1/2}	42 ^{1/2}	44 ^{1/2}	46 ^{1/2}	48 ^{1/2}	50 ^{1/2}	52 ^{1/2}
Nape to waist*	15 ^{1/4}	15 ^{1/2}	15 ^{3/4}	16	16 ^{1/4}	16 ^{1/2}	16 ^{3/4}
Side seam**	43	43 ^{2/3}	43 ^{2/3}	44	44 ^{1/3}	44 ^{2/3}	45

*centre back neck to centre back waist

**waist to hem along the side seam

The Kate Dress



Body measurements (inches):

	8	10	12	14	16	18	20
Bust	33	35	37	39	41	43	45
Waist	26	28	30	32	34	36	38
Hip	36	38	40	42	44	46	48

Fabric required (metres):

Requirements are given for fabrics with directional print. If your fabric isn't directional, you may need less fabric. You will also need 0.5m (V1), 0.2m (V2) or 0.6m (V3) of lightweight interfacing and 6 x 8mm buttons (V1) or 7 x 8mm buttons (V3). A 22" invisible zip is required for V1 and a 9" invisible zip for V2.

Version 1

1.15m wide	3.8	3.8	4.0	4.2	4.2	4.5	4.5
1.40m wide	3.2	3.2	3.3	3.3	3.3	3.5	3.5

Version 2

1.15m wide	3.2	3.2	3.2	3.2	3.2	3.2	3.2
1.40m wide	2.3	2.3	2.3	2.3	2.3	2.5	2.5

Version 3

1.15m wide	2.0	2.0	2.0	2.0	2.0	2.0	2.0
1.40m wide	1.4	1.4	1.4	1.4	1.6	1.75	1.75

Finished garment (inches):

Bust	35	37	39	41	43	45	47
Waist (V1&V2)	26¾	28¾	30¾	32¾	34¾	36¾	38¾
Waist (V3)	33½	35½	37½	39½	41½	43½	45½
Hip	54½	56½	58½	60½	62½	64½	66½
Nape to waist*	15¼	15½	15¾	16	16¼	16½	16¾
Waist to hem*	27¼	27¼	27¼	27¼	27¼	27¼	27¼
Nape to hem**	19¾	20	20¼	20½	30¾	21	21¼

*back length V1 and V2

**back length V3

The Anna Coat



Body measurements (inches):

	8	10	12	14	16	18	20
Bust	33	35	37	39	41	43	45
Waist	26	28	30	32	34	36	38
Hip	36	38	40	42	44	46	48

Fabric required (metres):

Requirements are given for fabrics with directional print. If your fabric isn't directional, you may need less fabric. You will also need a 1.25m of lightweight interfacing and 2 x 25mm buttons for the epaulettes.

1.15m wide	4.5	4.5	4.5	4.7	4.7	4.7	4.7
1.40m wide	3.5	3.5	3.5	4.2	4.2	4.2	4.2

Finished garment (inches):

Bust	37 ^{1/2}	39 ^{1/2}	41 ^{1/2}	43 ^{1/2}	45 ^{1/2}	47 ^{1/2}	49 ^{1/2}
Waist	35 ^{3/4}	37 ^{3/4}	39 ^{3/4}	41 ^{3/4}	43 ^{3/4}	45 ^{3/4}	47 ^{3/4}
Hip	43 ^{1/4}	45 ^{1/4}	47 ^{1/4}	49 ^{1/4}	51 ^{1/4}	53 ^{1/4}	55 ^{1/4}
Sleeve length*	17	17	17	17	17	17	17
Back length**	43 ^{1/8}	43 ^{3/8}	43 ^{7/8}	43 ^{7/8}	44 ^{1/8}	44 ^{3/8}	44 ^{5/8}
Shoulder to shoulder	14 ^{3/4}	15 ^{1/4}	15 ^{3/4}	16 ^{1/4}	16 ^{3/4}	17 ^{1/4}	17 ^{3/4}

*underarm to sleeve hem

**centre back neck to centre back hem