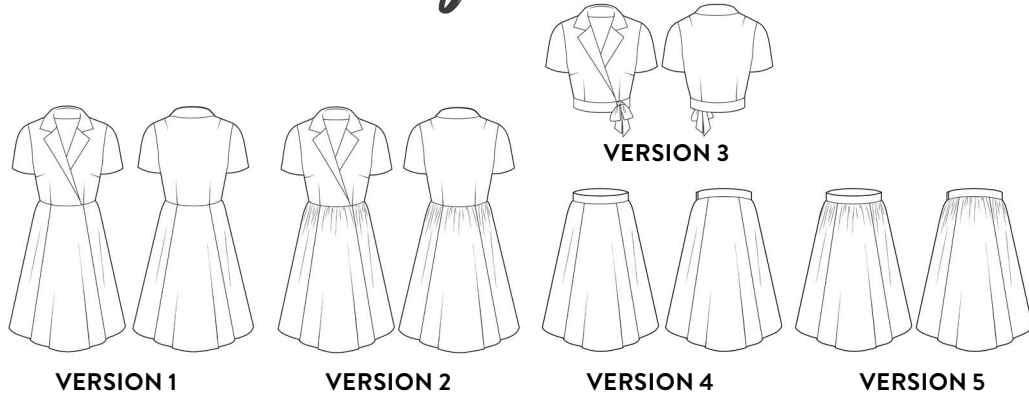


MY CAPSULE WARDROBE
Vintage Dreaming

SIZE CHARTS
PATTERNS SIZE 18-30

Sew
Over It

Marilyn Dress



FABRIC RECOMMENDATIONS

Light to medium weight fabric with structure such as cotton, cotton poplin, cotton lawn, cotton sateen, linen or chambray. For the dress versions, you will need a 22 inch invisible zip and 65cm of lightweight interfacing. For the blouse version, you will need 65cm of lightweight interfacing and 50cm of narrow ribbon. For the skirt version, you'll need a 9 inch invisible zip, 30cm of lightweight interfacing and a skirt hook and bar.

BODY MEASUREMENTS (IN INCHES):

	18	20	22	24	26	28	30
Bust	45	47	49	51	53	55	57
Waist	38	40	42	44	46	48	50
Hip	48	50	52	54	56	58	60

FABRIC REQUIRED (IN METRES):

VERSION 1	18	20	22	24	26	28	30
140cm wide	4.7	4.7	5.2	5.2	5.2	5.2	5.2
VERSION 2	18	20	22	24	26	28	30
140cm wide	5.0	5.0	5.5	5.5	5.5	5.5	5.5
VERSION 3	18	20	22	24	26	28	30
140cm wide	2.0	2.0	2.0	2.4	2.4	2.4	2.4
VERSION 4	18	20	22	24	26	28	30
140cm wide	3.5	3.5	3.8	3.8	3.9	3.9	3.9
VERSION 5	18	20	22	24	26	28	30
140cm wide	4.0	4.0	4.0	4.0	4.0	4.0	4.0

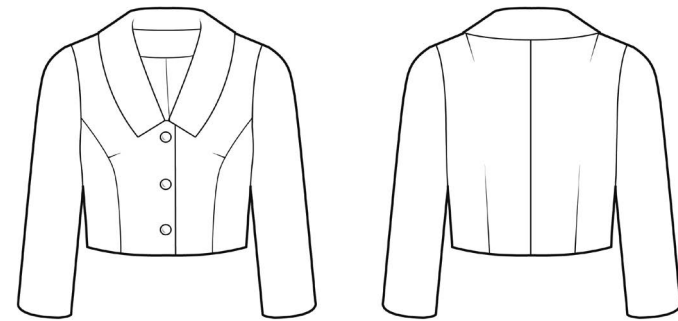
FINISHED GARMENT (IN INCHES)

Bust	48½	50½	52½	54½	56½	58½	60½
Waist	38½	40½	42½	44½	46½	48½	50½
Hip V1/V4	81½	83½	85½	87½	89½	91½	93½
Hip V2/V5	94½	96½	98½	100½	102½	104½	106½
Back bodice length*	16½	16¾	16¾	16¾	17	17¾	17¾
Back skirt length**	30¾	30¾	30¾	30¾	30¾	30¾	30¾

* Centre back neck/nape to waist. Excludes waistband for V3. (Narrow waistband=4cm/1½" wide waistband=6cm/2½")

** Centre back waist to centre back hem

Miriam Set - Jacket



FABRIC RECOMMENDATIONS

Medium weight fabrics such as linen, suiting wool. Cotton and viscose linen is also suitable but you may want to back these onto cotton voile to give the jacket more structure. You will also need 80cm of lightweight interfacing (if you are using wool, we'd recommend using a tailoring interfacing) and 3 x 22mm buttons.

BODY MEASUREMENTS (IN INCHES):

	18	20	22	24	26	28	30
Bust	45	47	49	51	53	55	57
Waist	38	40	42	44	46	48	50
Hip	48	50	52	54	56	58	60

FABRIC REQUIRED (IN METRES):

MAIN FABRIC	18	20	22	24	26	28	30
115cm wide	2.2	2.2	2.2	2.4	2.4	-	-
140cm wide	1.9	1.9	1.9	2.0	2.0	2.0	2.0
LINING	18	20	22	24	26	28	30
115cm wide	1.3	1.3	1.3	1.3	1.3	-	-
140cm wide	1.1	1.1	1.1	1.2	1.3	1.3	1.3
INTERFACING	18	20	22	24	26	28	30
140cm wide	0.8	0.8	0.8	0.8	0.8	0.8	0.8

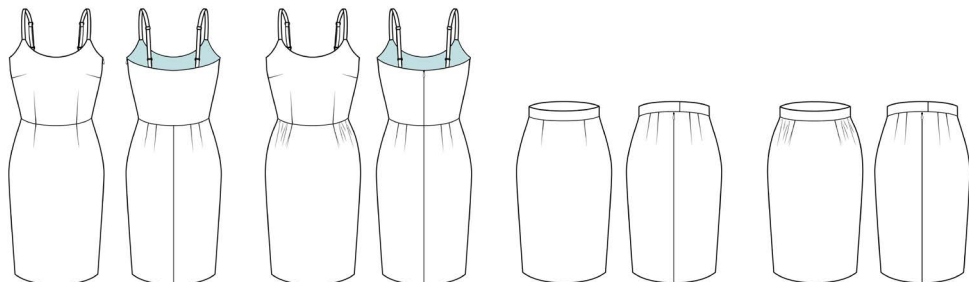
FINISHED GARMENT (IN INCHES)

Bust	50	52	54	56	58	60	62
Hem*	42	44	46	48	50	52	54
Back length**	15¾	15¾	16	16¾	16¾	16¾	16¾

*The jacket is designed to be cropped and hits above the natural waist. Use the hem measurement to check there is enough ease around your ribcage.

**Centre back neck to centre back hem

Miriam Set - Dress



VERSION 1

VERSION 2

VERSION 3

FABRIC RECOMMENDATIONS

Medium weight fabric with some structure such as cotton, cotton poplin, wool suiting, brocade, linen and denim. For the dress version, you will need a 16 inch invisible zip and 2x20mm strap adjuster sliders/rings. For the skirt version, you'll need a 9 inch invisible zip, 30cm of lightweight interfacing and a skirt hook and bar.

BODY MEASUREMENTS (IN INCHES):

	18	20	22	24	26	28	30
Bust	45	47	49	51	53	55	57
Waist	38	40	42	44	46	48	50
Hip	48	50	52	54	56	58	60

FABRIC REQUIRED (IN METRES):

VERSION 1							
140cm wide	2.2	2.4	3.2	3.2	3.2	3.2	3.2
VERSION 2							
140cm wide	2.0	2.4	3.2	3.2	3.2	3.2	3.2
VERSION 3							
140cm wide	1.8	1.8	1.8	1.8	1.8	1.8	1.8

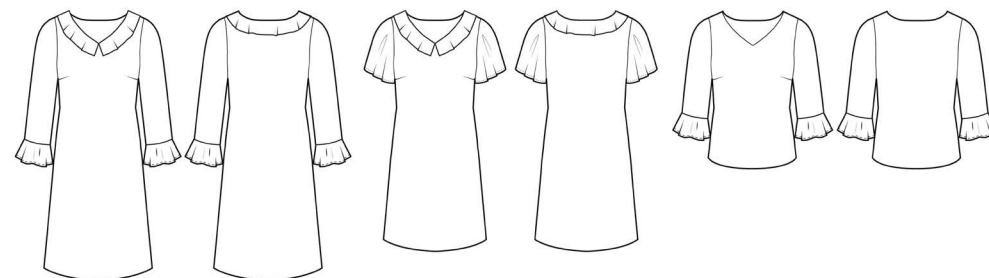
FINISHED GARMENT (IN INCHES)

Bust	47	49	51	53	55	57	59
Waist	38½	40½	42½	44½	46½	48½	50½
Hip	49	51	53	55	57	59	61
Back skirt length*	28½	28½	28½	28½	28½	28½	28½

*Centre back waist to centre back hem

Note: the versions relate to the zip option. Version 1 has a side zip, versions 2 and 3 have a centre back zip.

Vera Dress/Blouse



VERSION 1

VERSION 2

VERSION 3

FABRIC RECOMMENDATIONS

Lightweight fabric with lots of drape such as rayon, viscose, crepe, sand-washed silk and crepe de chine. For all versions, you'll need 50cm of lightweight interfacing.

BODY MEASUREMENTS (IN INCHES):

	18	20	22	24	26	28	30
Bust	45	47	49	51	53	55	57
Waist	38	40	42	44	46	48	50
Hip	48	50	52	54	56	58	60

FABRIC REQUIRED (IN METRES):

VERSION 1							
115cm wide	4.2	4.2	4.2	4.2	4.2	4.2	4.2
140cm wide	4.2	4.2	4.2	4.2	4.2	4.5	4.5
VERSION 2							
115cm wide	3.8	3.8	3.8	3.8	3.8	3.8	3.8
140cm wide	3.8	3.8	3.8	3.8	3.8	3.8	3.8
VERSION 3							
115cm wide	2.7	2.7	2.7	2.7	2.7	3.0	3.0
140cm wide	2.3	2.3	2.7	2.7	2.7	2.7	2.7

FINISHED GARMENT (IN INCHES)

Bust	49	51	53	55	57	59	61
Waist	44½	46½	48½	50½	52½	54½	56½
Hip	50¾	52¾	54¾	56¾	58¾	60¾	62¾
Back length V1*	45¾	45½	45¾	45¾	45¾	46	46¾
Back length V2*	37½	37¾	37¾	37¾	38	38¾	38¾
Back length V3*	24½	24¾	24¾	24¾	25	25¾	25¾

*from centre back neck to centre back hem.

Rita Trousers



VERSION 1

VERSION 2

FABRIC RECOMMENDATIONS

Medium weight fabrics such as linen, wool suiting, denim, stretch cotton and cotton twill. You'll also need 50cm of lightweight interfacing, a waistcoat buckle with an internal width of 20mm (ideally with an additional tooth slider), You will need either a 30mm button or a trouser hook and bar for the waistband, along with 2 x 20-22mm buttons for the ankle tabs. You will need a regular/trouser zip that is at least 18cm/7 inches long. Buy a longer zip if you often adjust the rise of patterns, as you can always shorten it.

BODY MEASUREMENTS (IN INCHES):

	18	20	22	24	26	28	30
Bust	45	47	49	51	53	55	57
Waist	38	40	42	44	46	48	50
Hip	48	50	52	54	56	58	60

FABRIC REQUIRED (IN METRES):

VERSION 1

115cm wide	4.2	4.2	4.2	4.2	4.2	4.2	4.2
140cm wide	4.2	4.2	4.2	4.2	4.2	4.5	4.5

VERSION 2

115cm wide	3.8	3.8	3.8	3.8	3.8	3.8	3.8
140cm wide	3.8	3.8	3.8	3.8	3.8	3.8	3.8

FINISHED GARMENT (IN INCHES)

Waist	39 ³ / ₄	41 ¹ / ₄	43 ³ / ₄	45 ¹ / ₂	47 ¹ / ₄	49 ³ / ₄	51 ¹ / ₄
Hip	51 ¹ / ₂	53 ³ / ₂	55 ¹ / ₂	57 ¹ / ₂	59 ¹ / ₂	61 ¹ / ₂	63 ³ / ₂
Front rise	16 ³ / ₄	17 ¹ / ₄	17 ³ / ₈	18 ¹ / ₈	18 ¹ / ₂	19	19 ³ / ₈
Side seam length V1*	39	39 ³ / ₈	39 ³ / ₄	40 ⁵ / ₈	40 ¹ / ₂	41	41 ¹ / ₈
Inseam V1*	24 ¹ / ₈	24 ¹ / ₈	24 ¹ / ₈	24 ¹ / ₄	24 ¹ / ₄	24 ³ / ₈	24 ³ / ₈
Side seam length V2	43	43 ³ / ₈	43 ³ / ₄	44 ¹ / ₈	44 ¹ / ₂	45	45 ⁵ / ₈
Inseam V2	28 ¹ / ₈	28 ¹ / ₈	28 ¹ / ₈	28 ¹ / ₄	28 ¹ / ₄	28 ³ / ₈	28 ³ / ₈

*The trousers are designed to be cropped in length

Vivienne Coat



VERSION 1 - BACK BELT

VERSION 2 - TIE BELT

FABRIC RECOMMENDATIONS

Medium to heavyweight fabrics such as linen, suiting wool, tweed, bouclé, melton, jacquard and boiled wool. You will also need lining fabric, such as acetate, crepe or polyester, as well as tailoring interfacing, shoulder pads and two 10cm x 23cm pieces of ice wool or wadding. You will need 4-6 x 28-30mm wide buttons.

BODY MEASUREMENTS (IN INCHES):

	18	20	22	24	26	28	30
Bust	45	47	49	51	53	55	57
Waist	38	40	42	44	46	48	50
Hip	48	50	52	54	56	58	60

FABRIC REQUIRED (IN METRES):

MAIN FABRIC

140cm wide	4.5	4.5	5.0	5.0	5.2	5.2	5.2
------------	-----	-----	-----	-----	-----	-----	-----

LINING

140cm wide	3.2	3.2	3.5	3.5	3.7	3.7	3.7
------------	-----	-----	-----	-----	-----	-----	-----

INTERFACING

140cm wide	2.7	2.7	2.7	2.7	2.7	2.7	2.7
------------	-----	-----	-----	-----	-----	-----	-----

FINISHED GARMENT (IN INCHES)

Bust	51	53	55	57	59	61	63
Waist	46	48	50	52	54	56	58
Hip	57	59	61	63	65	67	69
Back length*	47 ³ / ₄	47 ¹ / ₈	48	48 ¹ / ₈	48 ¹ / ₄	48 ³ / ₈	48 ¹ / ₂

*Centre back neck to centre back hem