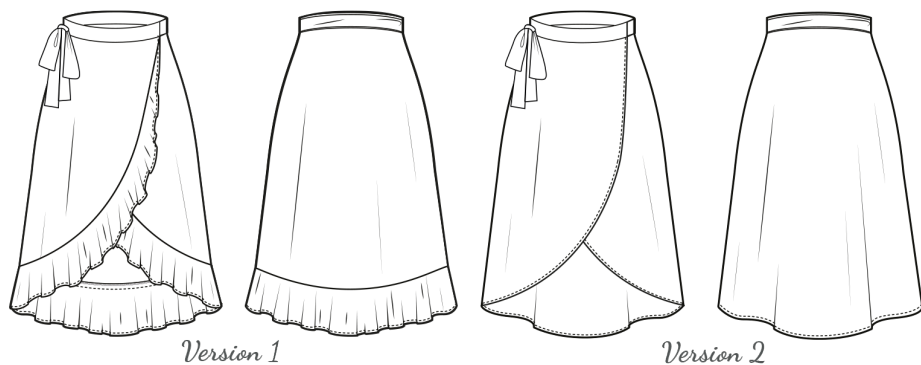


My Capsule Wardrobe

SUMMER DREAMING

SIZE CHARTS FOR
PATTERNS SIZED 6-20

Alba Skirt



Version 1

Version 2

Body measurements (inches):

	6	8	10	12	14	16	18	20
Bust	31	33	35	37	39	41	43	45
Waist	24	26	28	30	32	34	36	38
Hip	34	36	38	40	42	44	46	48

Fabric required (metres):

Requirements are given for fabrics with directional print. If your fabric isn't directional, you may need less fabric. For both versions, you will also need 100x35cm of lightweight interfacing.

Version 1

1.15m wide	3.7	3.7	3.7	3.8	3.8	3.8	4.0	4
1.40m wide	2.7	2.7	2.8	2.8	3.0	3.1	3.2	3.4

Version 2

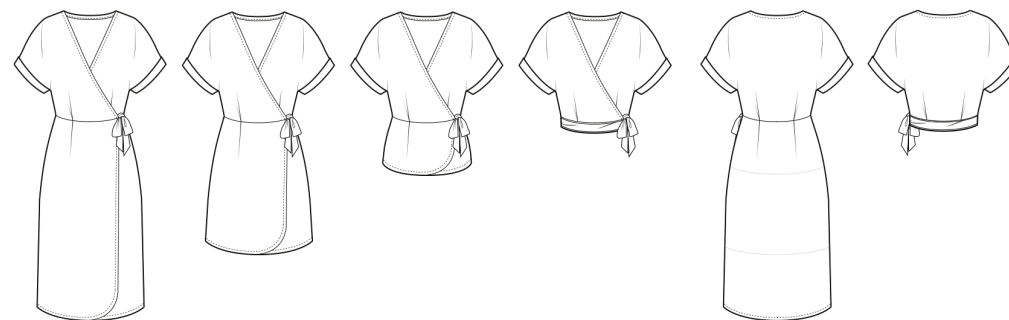
1.15m wide	2.7	2.7	2.7	2.7	2.7	2.7	2.7	2.7
1.40m wide	2.7	2.7	2.7	2.7	2.7	2.7	2.7	2.7

Finished garment (inches):

Waist	25	27	29	31	33	35	37	39
Hip	38 ^{1/2}	40 ^{1/2}	42 ^{1/2}	44 ^{1/2}	46 ^{1/2}	48 ^{1/2}	50 ^{1/2}	52 ^{1/2}
Back length V1*	34 ^{1/4}	34 ^{1/4}	34 ^{1/4}	34 ^{1/4}	34 ^{1/4}	34 ^{1/4}	34 ^{1/4}	34 ^{1/4}
Back length V2*	34	34	34	34	34	34	34	34

*centre back waist to centre back hem
(including 4cm waistband)

Ravello Dress



Version 1

Version 2

Version 3

Version 4

Body measurements (inches):

	6	8	10	12	14	16	18	20
Bust	31	33	35	37	39	41	43	45
Waist	24	26	28	30	32	34	36	38
Hip	34	36	38	40	42	44	46	48

Fabric required (metres):

Requirements are given for fabrics with directional print. If your fabric isn't directional, you may need less fabric. For version 1, 2 and 3 you will need one 10mm button and a 10cm scrap of 4mm wide elastic. You will need 3cm wide bias binding (unfolded width), you can make your own or buy premade.

Version 1

1.40m wide	3	3	3	3.4	3.4	3.5	3.5	3.5
Binding	5	5	5	5	5	5	5	5

Version 2

1.40m wide	2.2	2.2	2.2	2.7	2.7	2.7	2.7	2.7
Binding	4	4	4	4	4	4	4	4

Version 3

1.40m wide	1.7	1.7	1.7	1.9	1.9	1.9	1.9	1.9
Binding	3.5	3.5	3.5	3.5	3.5	3.5	3.5	3.5

Version 4

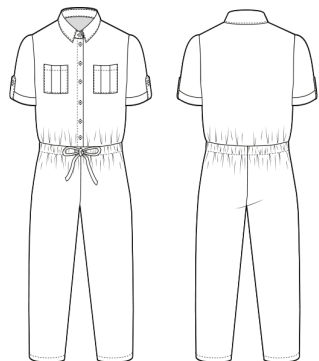
1.40m wide	1.5	1.5	1.5	1.5	1.6	1.6	1.6	1.6
Binding	1.3	1.3	1.3	1.3	1.3	1.5	1.5	1.5

Finished garment (inches):

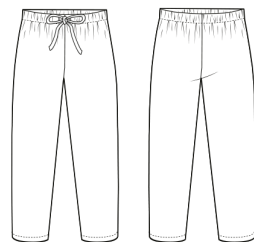
Bust	33	35	37	39	41	43	45	47
Waist	27	29	31	33	35	37	39	41
Hip	36 ^{1/2}	38 ^{1/2}	40 ^{1/2}	42 ^{1/2}	44 ^{1/2}	46 ^{1/2}	48 ^{1/2}	50 ^{1/2}
Nape to waist	15 ^{1/2}	15 ^{3/4}	16	16 ^{1/4}	16 ^{1/2}	16 ^{3/4}	17	17 ^{1/4}
Waist to hem V1*	38	38	38	38	38	38	38	38
Waist to hem V2*	21 ^{1/2}	21 ^{1/2}	21 ^{1/2}	21 ^{1/2}	21 ^{1/2}	21 ^{1/2}	21 ^{1/2}	21 ^{1/2}
Waist to hem V3*	8 ^{1/2}	8 ^{1/2}	8 ^{1/2}	8 ^{1/2}	8 ^{1/2}	8 ^{1/2}	8 ^{1/2}	8 ^{1/2}

*centre back waist to centre back hem

Porto Jumpsuit



Version 1



Version 2

Body measurements (inches):

	6	8	10	12	14	16	18	20
Bust	31	33	35	37	39	41	43	45
Waist	24	26	28	30	32	34	36	38
Hip	34	36	38	40	42	44	46	48

Fabric required (metres):

Requirements are given for fabrics with directional print. If your fabric isn't directional, you may need less fabric. You will need a 1m of 1-1.5cm wide elastic for the waist of both versions. For version 1, you will also need 9x10mm buttons and 60cm of lightweight interfacing.

Version 1

1.15m wide	3.8	3.8	4	4.3	4.3	4.5	4.5	4.5
1.40m wide	2.9	2.9	3.2	3.2	3.4	3.8	4.0	4.0

Version 2

1.15m wide	2.4	2.4	2.5	2.5	2.5	2.6	2.6	2.6
1.40m wide	2.2	2.2	2.2	2.2	2.3	2.3	2.6	2.6

Finished garment (inches):

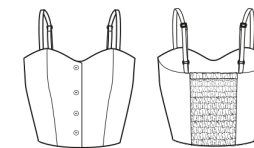
Bust	38 ^{1/2}	40 ^{1/2}	42 ^{1/2}	44 ^{1/2}	46 ^{1/2}	48 ^{1/2}	50 ^{1/2}	52 ^{1/2}
Waist	38	40	42	44	46	48	50	52
Hip	42 ^{1/4}	44 ^{1/4}	46 ^{1/4}	48 ^{1/4}	50 ^{1/4}	52 ^{1/4}	54 ^{1/4}	56 ^{1/4}
Back bodice length*	20 ^{1/2}	20 ^{3/4}	21	21 ^{1/4}	21 ^{1/2}	21 ^{3/4}	22	22 ^{1/4}
Inside leg	30 ^{1/2}	30 ^{1/2}	30 ^{1/2}	30 ^{3/4}	30 ^{3/4}	30 ^{3/4}	30 ^{3/4}	30 ^{3/4}

*centre back neck to centre back waist.

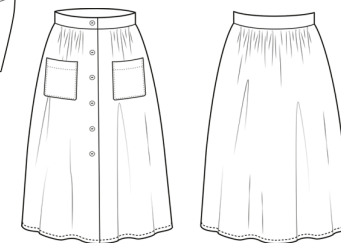
Siena Dress



Version 1



Version 2



Version 3

Body measurements (inches):

	6	8	10	12	14	16	18	20
Bust	31	33	35	37	39	41	43	45
Waist	24	26	28	30	32	34	36	38
Hip	34	36	38	40	42	44	46	48

Fabric required (metres):

Requirements are given for fabrics with directional print. If your fabric isn't directional, you may need less fabric. For version 1, you will need L80xW40cm of lightweight interfacing, version 2 requires L30x20 and version 3 needs L80xW100. For versions 1 and 2, you will need 1cm or 2cm wide strap adjusters depending on whether you make the narrow or wide strap. You also need 2x20m spools of shirring elastic.

Version 1

1.15m wide	2.7	2.7	2.8	3.0	3.1	3.2	3.2	3.2
1.40m wide	2.3	2.3	2.4	2.4	2.5	2.6	2.7	2.7

Version 2

1.15m wide	1.0	1.0	1.0	1.0	1.1	1.1	1.2	1.2
1.40m wide	0.9	0.9	0.9	0.9	1.0	1.0	1.0	1.0

Version 3

1.15m wide	2.5	2.5	2.5	2.5	2.5	2.8	2.8	2.8
1.40m wide	2.0	2.0	2.0	2.0	2.0	2.3	2.3	2.3

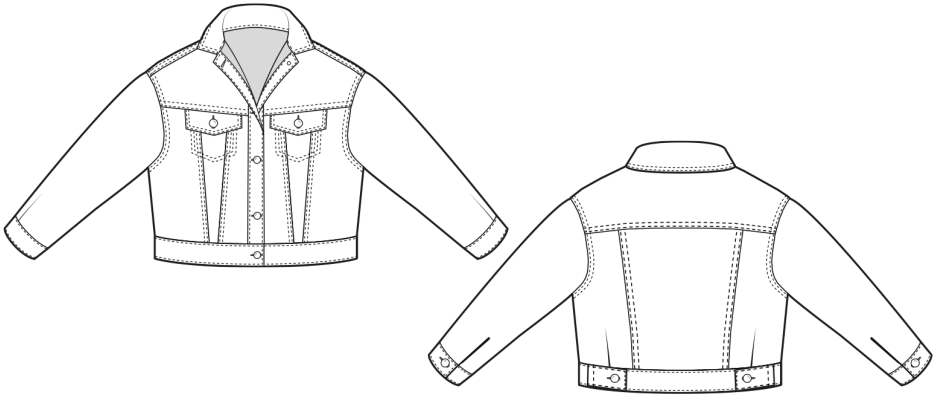
Finished garment (inches):

If you are between sizes on the bust and waist, we recommend sizing down for Siena due to the elasticated back panel. You can interchange the sizing across the panels to fit a larger bust, so be sure to toile the bodice first.

Bust	31	33	35	37	39	41	43	45
Waist	24 ^{1/2}	26 ^{1/2}	28 ^{1/2}	30 ^{1/2}	32 ^{1/2}	34 ^{1/2}	36 ^{1/2}	38 ^{1/2}
Hip	Free	Free	Free	Free	Free	Free	Free	Free
Back skirt length V1	28	28	28	28	28	28	28	28

*centre back waist to centre back hem

Sorrento Jacket



Body measurements (inches):

	6	8	10	12	14	16	18	20
Bust	31	33	35	37	39	41	43	45
Waist	24	26	28	30	32	34	36	38
Hip	34	36	38	40	42	44	46	48

Fabric required (metres):

Requirements are given for fabrics with directional print. If your fabric isn't directional, you may need less fabric. You will also need 11x17mm hammer-on denim buttons. Optional: you may wish to use a scrap of lighter cotton fabric for the pocket facing to make it easier to sew. We recommend quilting cotton, chambray or lawn. You will need 10cmx40cm or 20x20cm if you wish to do this.

1.15m wide	2.0	2.0	2.1	2.1	2.2	2.2	2.4	2.4
1.40m wide	1.7	1.7	1.8	1.8	2.0	2.0	2.0	2.0

Finished garment (inches):

Bust	36 ^{1/2}	38 ^{1/2}	40 ^{1/2}	42 ^{1/2}	44 ^{1/2}	46 ^{1/2}	48 ^{1/2}	50 ^{1/2}
Waist	31	33	35	37	39	41	43	45
Back bodice length*	18 ^{3/4}	19	19 ^{1/4}	19 ^{1/2}	19 ^{3/4}	20	20 ^{1/4}	20 ^{1/2}

*centre back neck to centre back waist.