

# Wall Isolation Type WTGI

±2mm deflection, Heavy Duty Resilient Girt Isolator

## APPLICATION

Typically used for isolating adjoining walls between cinemas or sound studios where a high degree of isolation is required. Used for isolation between the vertical structural columns and horizontal girt beams and offers some degree of lateral restraint.

## FEATURES

- Will carry up to 3 layers of 16mm Gyprock

## OPTION

- The resilient element can be varied to increase the amount of deflection required, in situ.

## MISALIGNMENT CAPABILITY

This system has no misalignment capability.

## PERFORMANCE CHARACTERISTICS

- Axial (vertical) rating up to 3.3kN at 2mm deflection
- Lateral rating up to 1kN at 2mm deflection

## WALL ISOLATION SELECTION

The design characteristics have to be based on a maximum axial rating of 3.3kN.

## INSTALLATION

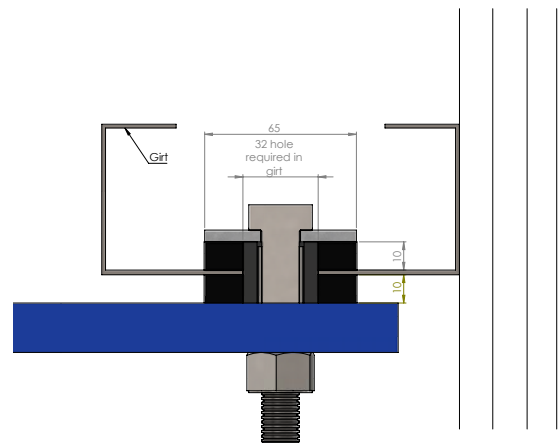
1. Assembly is bolted through the girt.
2. Lift girt into position onto cleat.
3. Tighten bottom nut to full torque.

## TECHNICAL ASSISTANCE

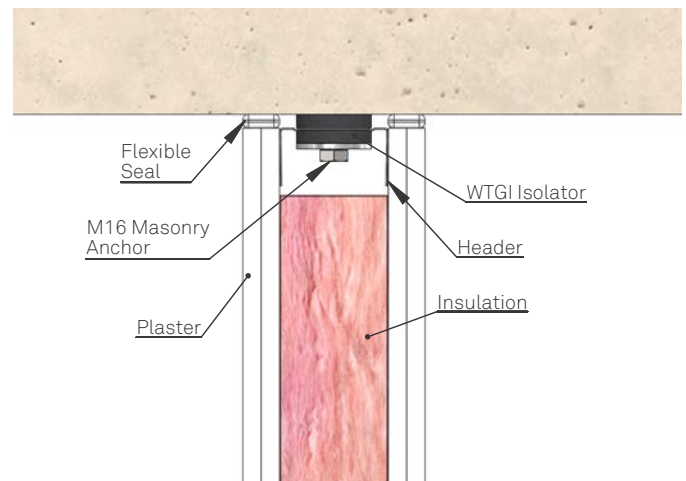
All Embelton offices can provide detailed technical assistance on the use of this product in specific applications.

## CONDITIONS OF SALE

These products are sold subject to the published Embelton General Conditions of Sale, copies of which may be inspected on request.



WTGI INSTALLATION / DIMENSIONS



WALL HEADER ISOLATOR

## SPECIFICATION

The wall girt isolator shall incorporate a resilient rubber element in combination with a heavy duty combination locking system. The isolation assembly shall have an axial vertical rating of up to 3.3kN at 2mm deflection and a lateral rating up to 1kN at 2mm deflection. They shall be type WTGI as supplied by Embelton.