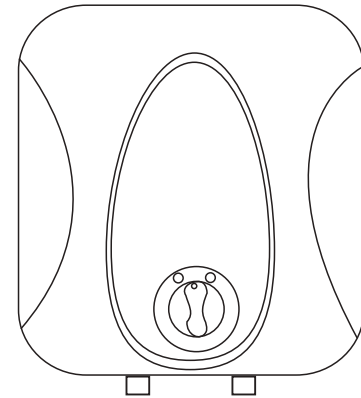


# Aqueous Water Heaters

## AQU-6/AQU-6-12



[www.ausj.com.au](http://www.ausj.com.au)

[sales@ausj.com.au](mailto:sales@ausj.com.au)

P.O. Box 777, Leichhardt, NSW 2040

Please fill in all details correctly.

Retain this card with original purchase invoice for any future warranty claim.

Please note in the event of this document and the original purchase invoice not being provided, warranty will commence from the date of manufacture.

**Owner's Details:**

Surname..... Initial.....

Address.....

.....

Date of Purchase..... Purchased from.....

Model..... SerialNumber.....

**Installer's Details**

Date of Installation..... Installer's Name.....

Address.....

Installer's Signature.....

## 10. Safety Messages

Under normal operating conditions:

1. The water temperature from the outlet pipe will not exceed 100°C.
2. When water reaches the pressure relief valve the water temperature will not exceed 93°C.
3. When the water temperature reaches 100°C the input energy would not exceed the energy released.

The knob can only adjust the temperature to a maximum of 75°C, when the temperature reaches 75°C the power cycles automatically. The heater will also power off when the thermostat reaches 93°C.

For inhibition of legionella, every 7 days the following water temperature and times must be held in the tank.

**TABLE 1**  
**MINIMUM EXPOSURE PERIOD**

Temperature	Minimum exposure period
70°C or greater	1 s
66°C	2 min
60°C	32 min
55°C	6 h

## 11. Trouble Shooting Guide

Symptom	Cause	Solution
Indicator light does not light up	<ol style="list-style-type: none"> <li>1. The power supply is not connected</li> <li>2. The indicator light is damaged or has failed</li> <li>3. The temperature cut out device has operated and requires re-setting</li> </ol>	Have a suitably qualified electrician check all electrical wiring and the indicator lamp
Water temperature fails to meet temperature setting	<ol style="list-style-type: none"> <li>1. The heating element is defective</li> <li>2. The temperature controller has malfunctioned.</li> <li>3. There is no power supply to the heater</li> </ol>	<ol style="list-style-type: none"> <li>1. Replace the heater element</li> <li>2. Contact a suitably qualified professional to arrange repair</li> <li>3. Check the power supply to the heater</li> </ol>
No water flow from the warm/hot tap	<ol style="list-style-type: none"> <li>1. Main water supply is turned off</li> </ol>	<ol style="list-style-type: none"> <li>1. Ensure the water supply is turned on</li> </ol>
Water leakage	<ol style="list-style-type: none"> <li>1. Leaking from plumbing connection</li> <li>2. Leaking at the sealing gasket of the heating element</li> </ol>	<ol style="list-style-type: none"> <li>1. Tighten the appropriate plumbing connection</li> <li>2. Tighten the element or replace the sealing gasket</li> </ol>
Electrical mains supply tripped	<ol style="list-style-type: none"> <li>1. Heating element has short circuited</li> </ol>	<ol style="list-style-type: none"> <li>1. Replace the heating element of the heater</li> </ol>

## 1. Product Features

### Intelligent

The Aqueous unit have an advanced thermostat. This thermostat allows the water temperature to be set between 30°C and 75°C. It will sustain the set temperature when in operation.

### Durable and Elegant

The exterior shell is made of high quality plastics and is both elegant and durable. The tank inside is made of SPCC steel & enamel.

### Environment Friendly and Efficient

The polyurethane insulation provides excellent heat preservation, saving electricity by maintaining the temperature.

### Multi-Functional Protection

Over-temperature, run dry and over pressure protections all work in sync to make this a reliable and safe water heating option.

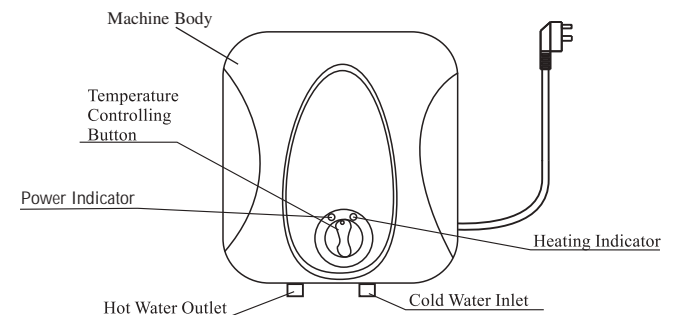
### MODEL: AQU-6, AQU-6-12

Electric Storage Water Heater

## 2. Accessories and Data

The following accessories are included with your unit.

No.	Item	Quantity
1	Hot water heater	1
2	Mounting bracket	1
3	Bracket bolts and washers	2
4	Combined pressure relief valve	1
5	Owner's manual	1



### 3. List of Technical Parameters

Feature	AQU-6	AQU-6-12
	240VAC	12VDC
Rated Volume (L)	6L	6L
Rated Temperature (C)	30°C to 75°C	30°C to 75°C
Rated Voltage (V)	240VAC	12VDC
Rated Power (W)	1000W	180W
Rated Current (A)	4.2A	15A
Rated Frequency (Hz)	50Hz	/
Rated Tank Pressure(Mpa)	0.85MPa	0.85MPa
Weight(Kg)	6.1kg	6.1kg
Dimensions(mm)	305x305x304mm	305x305x304mm
Mounting Mode	Vertical	Vertical

### 4. Safety Cautions

Electrical safety requires that this unit be earthed according to the working rules of installations of electrical goods.

The location this water heater is installed in should be able to support four times the weight of the watersystem when it is full of water (Approx. 25kg).

The water heater must be filled with water before being given power during the first use. The water heater is not allowed to heater without water (run dry).

The power socket must be earthed.

Don't handle the plug with a wet hand.

Do not operate this device if the cord, feed or plug is damaged in any fashion.

Don't replace the safety valve with any unauthorized products.

### 5. Installation

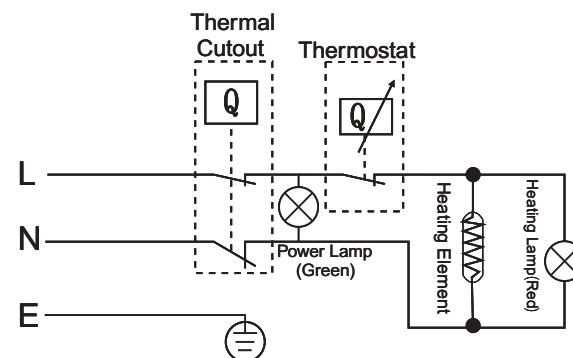
Installation is the responsibility of the buyer and the manufacturer does not bear the responsibility for any damages caused by incorrect installation, damage due to poor quality plumbing and parts, non-standard water or not following these instructions.

#### Mounting the Heater

- Fit the brackets to the unit using the bolts and washers
- Using the supplied screws, fix the brackets to the wall (you may have to predrill holes)

It is recommended that the water heater be as close as possible to the place of use to reduce loss of heat in piping.

Only install your appliance in accordance with any state or territory regulations with a qualified installer.



### 9. 12VDC Cable Length and Current Capacity Guide

Current, Length (Twin) to area (sq mm)

12.6VDC, current carrying capacity(CCC)(top) then follows 5% volt drop to 70 sq mm.

Current,length (twin) to area (sq mm)

12.6v DC, current carrying capacity (CCC) (top) then follows 5% volt drop to 70 sqmm

		Current in amps										
		12	16	20	25	32	50	63	80	106	125	155
length, red & black metres	1	1	1.5	2.5	4	6	10	16	25	35	50	70
	2	2.5	2.5	4	4	6	10	16	25	35	50	70
	3	4	4	6	6	10	16	16	25	35	50	70
	4	4	6	6	10	10	16	25	25	35	50	70
	5	6	6	10	10	16	25	25	35	50	50	70
	6	6	10	10	16	16	25	25	35	50	70	70
	7	10	10	16	16	16	25	35	50	70	70	over
	8	10	10	16	16	25	35	50	50	70	over	
	9	10	16	16	25	25	35	50	70	over		
	10	10	16	16	25	25	50	50	70			
	11	10	16	16	25	25	50	70	70			
	12	16	16	25	25	25	50	70	over			
	13	16	16	25	25	35	50	70				
	14	16	16	25	25	35	70	70				
	15	16	25	25	25	35	70	over				
	16	16	25	25	35	50	70					
	17	16	25	25	35	50	70					
	18	16	25	25	35	50	70					
	19	25	25	25	35	50	over					
	20	25	25	35	50	50						
30	35	35	50	70	over							
40	35	50	70	over								
50	70	70	over									
60	70	over										
70	over											

1. Power supplies must be on a network with an alternating current of 50 Hz 240VAC.
2. The water heater is equipped with a standard 10-amp cord and power plug.
3. The socket should be grounded and protected from moisture.
4. The device must maintain circuit breaker protection.

### 12VDC Installation (AQU-6-12 only)

All appliance installations should be only carried out by a qualified individual.

1. Connect the red 5mm large wire directly to house battery or another suitable power source, depending on the length of your wiring you may need to step up the cabling, we recommend a 50-amp fuse. Refer to section 9 for appropriate cable sizing.
2. Connect the black 5mm large ground wire to an earth point or a negative battery terminal, depending on the length of your wiring you may need to step up the cabling, refer to section 9 for appropriate sizing.
3. Connect the small black ground wire to an earth point and the small red wire to a switched power source; this is crucial for 12VDC operation of the heater.

Important: To avoid draining the engine crank battery, the red small positive wire must be connected to a switch or an ignition source. (Applicable for the AQU-6-12 type only).

## 6. Methods of Usage

- Plug in the water heater after making sure it is filled with water.
- Turn the thermostat to the desired temperature and switch the heater on. Indicator lights indicate the heater is functioning.
- Water temperature is adjustable from 30°C to 75°C.
- The Aqueous water heaters are auto thermostatic. They automatically cycle on and off when they reach the set temperature.

**Over Temperature Protection:** This protects the water heater from overheating. It disconnects a heating element from the network at temperatures in excess of 93°C. Safety systems cannot automatically reset.

**Over Pressure Protection:** When the internal pressure is higher than the rated tank pressure the safety valve will automatically release pressure. It is normal that water is blown down from the pressure relief outlet.

## 7. Guarantee Certificates

The guarantee on this water heater is 12 months within Australia (from the date of sale).

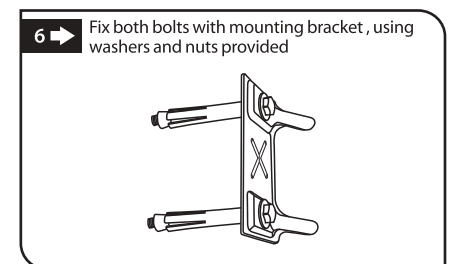
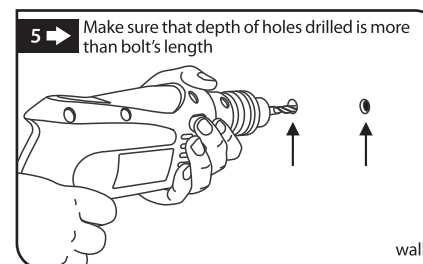
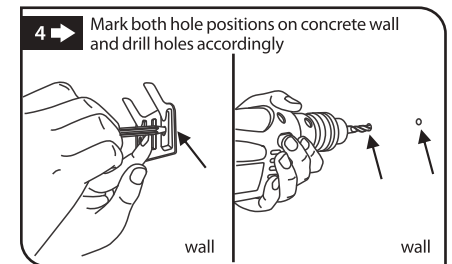
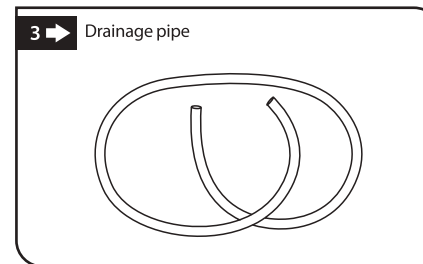
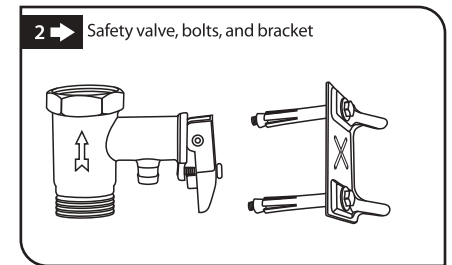
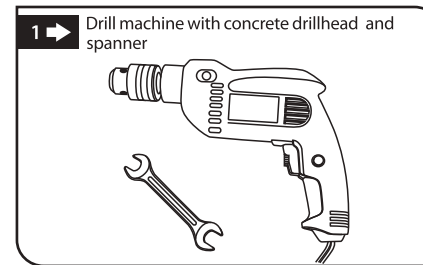
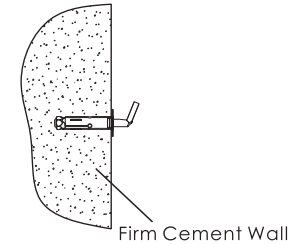
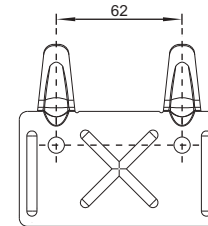
Supply of spare parts is carried out free of charge within the warranty period.

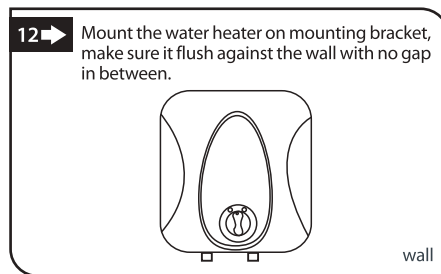
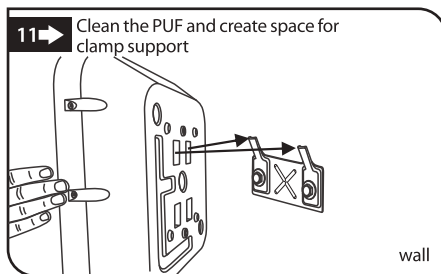
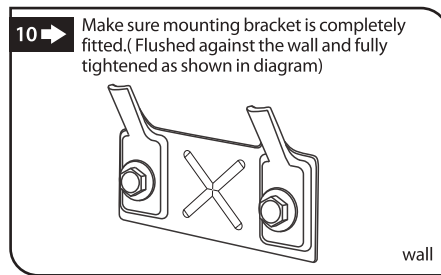
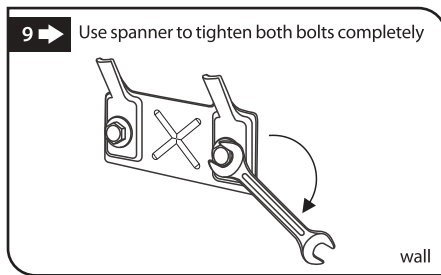
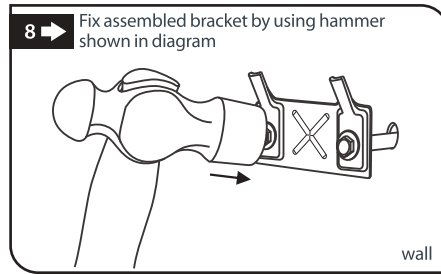
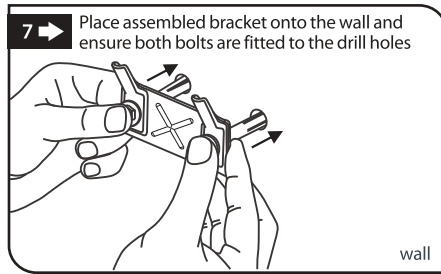
Note: Infringement of the instruction manual procedures cancels the warranty period and any complaints will not be accepted.

## 8. Circuit Diagram

**Warning: The wall must be strong enough to support four times the weight of the heater filled with water (Approx. 25kg). The unit should be mounted to a load bearing fixture.**

- Before deciding on the location of the mounting bracket ensure that a minimum clearance of 200mm at the bottom of the water heater has been allowed for (this is to facilitate both easy connection to the water inlet and outlet of the water heater and in order to perform maintenance operations).
- After deciding on the position of the mounting bracket and having securely affixed this to the wall (check diagrams below for guidance when installing on to a concrete wall), hang the water heater on to the mounting bracket as shown.



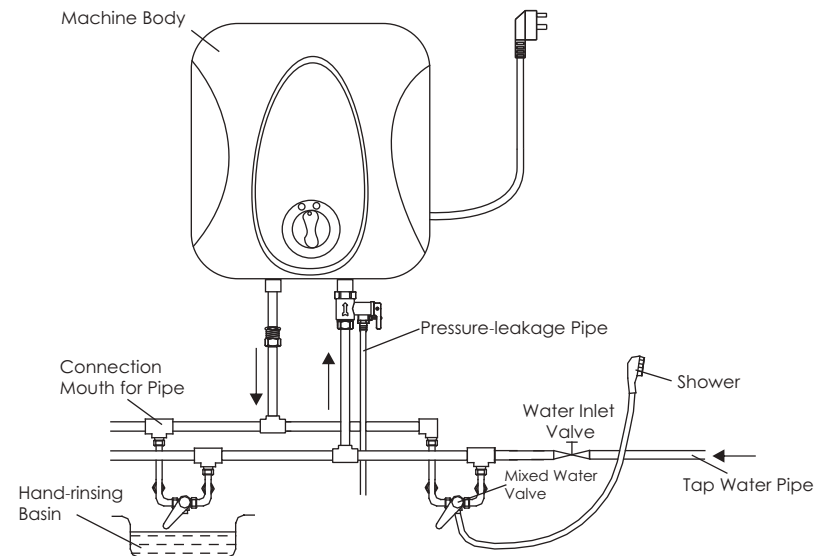
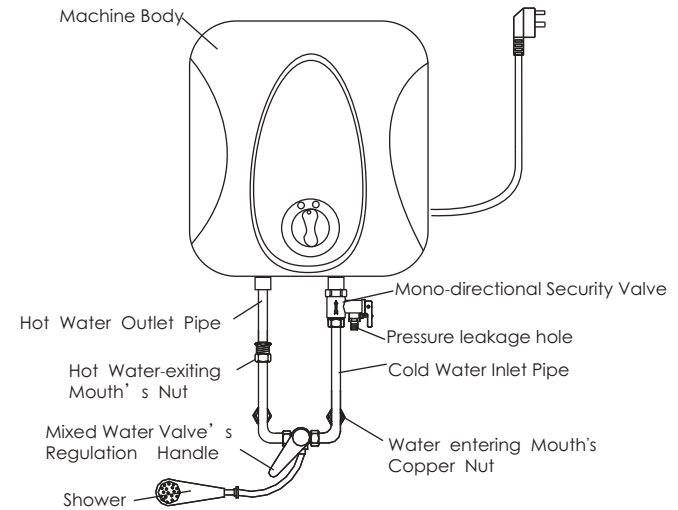


### Pipe Connection

- Screw the pressure relief safety valve onto the cold water outlet. It is recommended that you use a liquid thread sealer to ensure a non-leaking fitting.
- We recommend adding a one-way valve to the cold water in to avoid water feeding back to the main water supply pipeline.

### Notices:

- No responsibility is taken by the manufacturer for damage caused to the unit when not using the supplied pressure relief valve.
- **If the water pressure exceeds 0.85MPa or water flows constantly from the pressure relief valve hose a pressure reducing valve must be used on the cold water inlet.**
- We recommend adding a thermostatic valve or mixer valve to avoid the chance of the outlet water temperature being too high.



### Power Connection

Before introducing any power to the water heater make sure the water heater is filled with water.

### 240VAC Installation (AQU-6 only)