

Thank You!

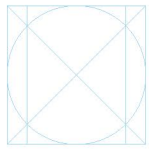
For downloading these lettering exemplars.

Each page is designed to be printed at A3 (Euro) or Ledger/11x17" (US) to show full scale of lettering using Neuland markers.

Please enjoy these exemplars for your personal learning.

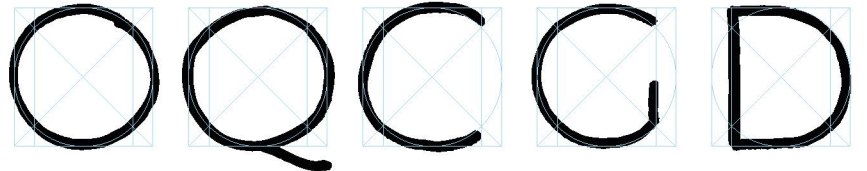
Please note: These are not approved for sale or distribution during workshops or similar events.

As an additional exercise aid, you can use the free companion videos in the "Unlock Your Neuland Markers" section at www.LetsLetterTogether.com or contact Heather Martinez directly.



1" ROMAN
MAJUSCULES
PRACTICE
SHEET

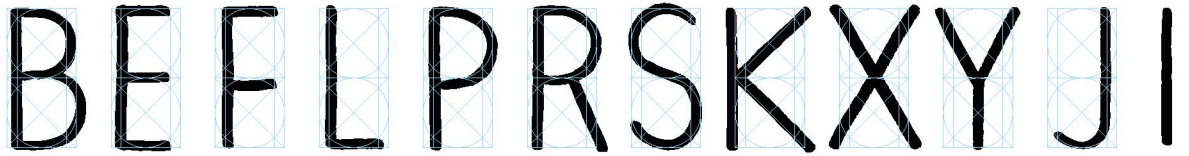
OQCGD



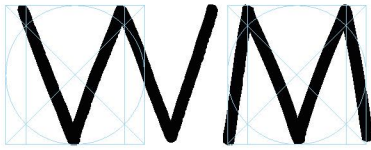
HUNTAVZ



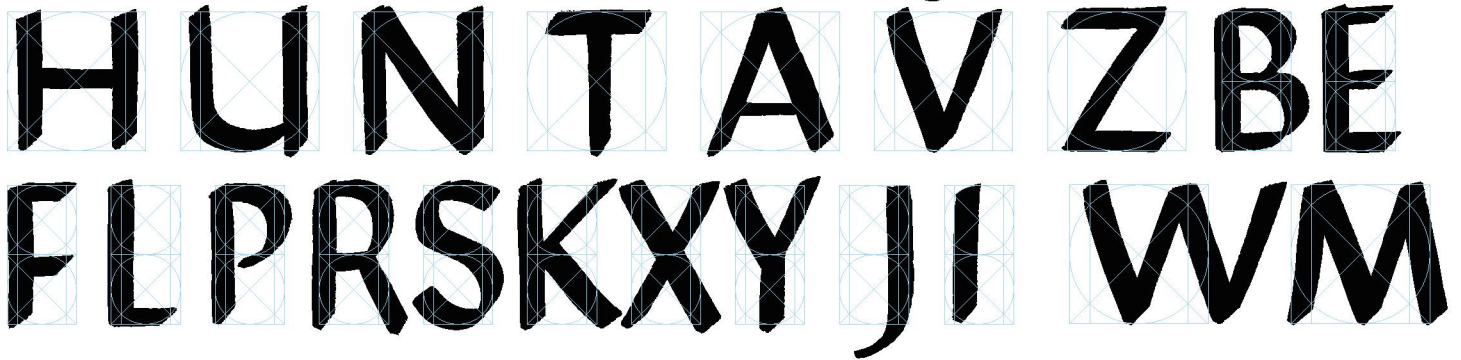
BEFLPRS
KXYJI



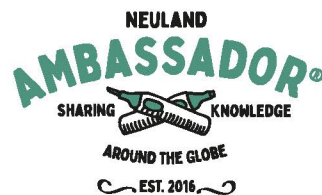
MW



PRACTICE

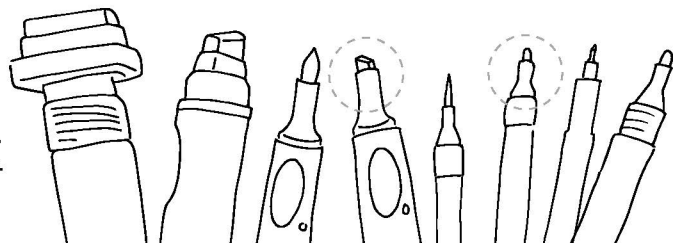


Practice template designed to be drawn on directly with Neuland markers. Additional blank templates available in the free online course: *Unlock Your Neuland Markers* at www.LetsLetterTogether.com.



Lettering exemplar created for you
by www.HeatherMartinez.com

Written with Neuland FineOne® and No.One wedge nib markers.
Any marker tip can be used to write the Roman form.



DOUBLE STROKE FIRST STROKE

A B C D E F G

H I J K L M

N O P Q R S

T U V W X Y

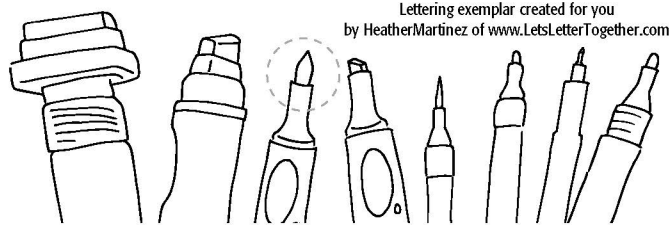
Z BOLD-STYLE LETTERING
FOR GRAPHIC RECORDING

This technique was designed for those who write fast to make nearly any lettering style bold by making the first stroke of the letter a double stroke (with the exception of the letter z).

This ductus was written to show the strokes in order:

- 1) 500 - brilliant yellow,
 - 2) 600 - orange and
 - 3) (+ additional strokes) 601 - orange red
- using the Neuland No.One® Art marker page of the Handlettering Learning Pad.

Written with the Neuland No.One® Art, any marker nib can be used to make your lettering style bold using this technique.



Lettering exemplar created for you
by Heather Martinez of www.LetsLetterTogether.com

abcdefghijklmnopqrstuvwxyz

abcdefghijklmnopqrstuvwxyz

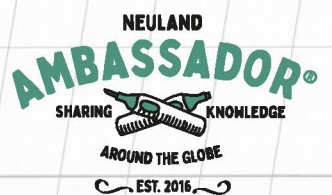
abcdefghijklmnopqrstuvwxyz

ABCDEFGHIJKLMNO

ABCDEFGHIJKLMNO

ABCDEFGHIJKLMNO

WXYZ



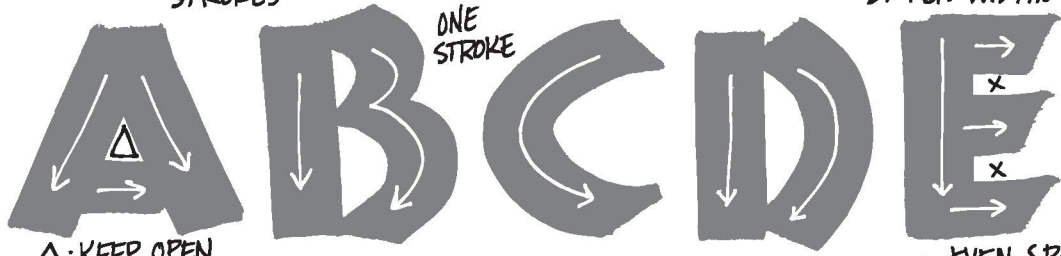
Lettering exemplar created for you
by Heather Martinez of www.LetsLetterTogether.com

Brushlettering using the Neuland No.One® Art
This exemplar was drawn with a grey marker so you can see the intersecting strokes.
Use the Handlettering Learning Pad (flipchart or to go size) to practice good letter forms.



KEEP MARKER
FLAT ON ALL
STROKES

~2+ PEN WIDTHS WIDE

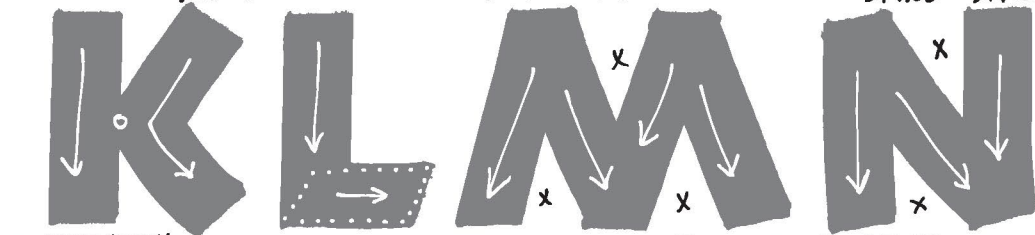
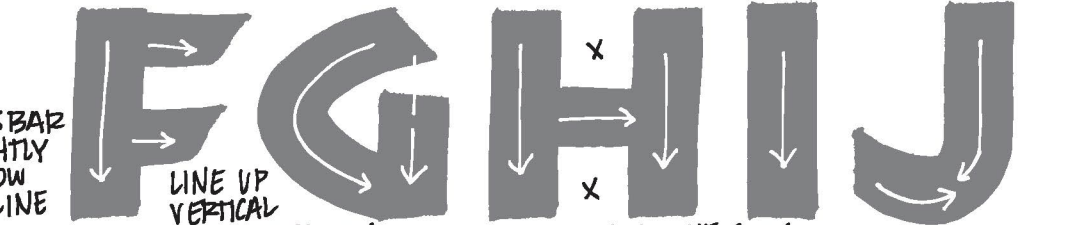


CROSS BAR
SLIGHTLY
BELOW
MIDLINE

LINE UP
VERTICAL
WITH START OF G

X - SQUARE NEGATIVE SPACE

"SMILE" STROKE



O - JUST TOUCH

KEEP CROSSBARS CONSISTENT

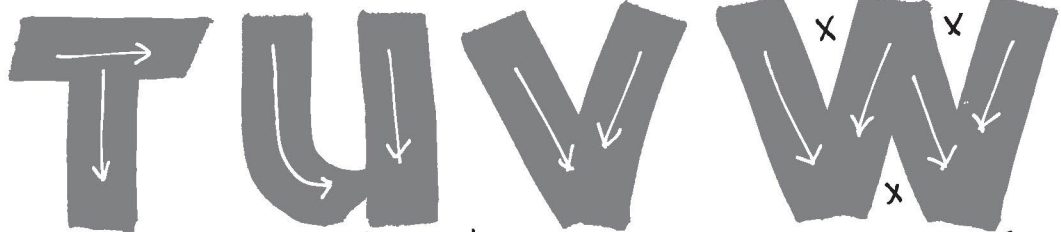
X - EQUAL SPACE



1 - 11 to 5 STROKES

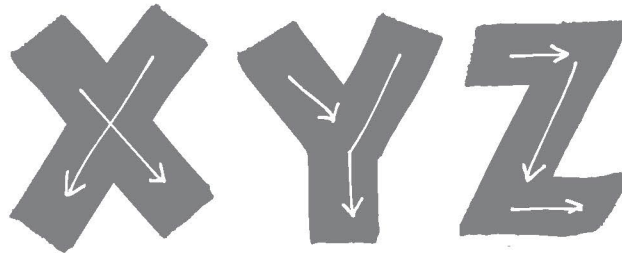
O - JUST TOUCH

SLIGHT CURVE



△ - KEEP THIS OPEN

X - EQUAL SPACES



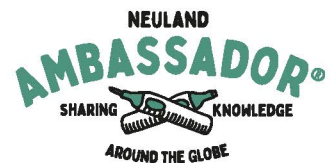
DRAW
DIAGONAL
FIRST!

...

While Neuland Hand is traditionally written at 3.5 pen widths tall. It is recommended to write at least 4 pen widths with markers or taller to create varied lettering styles.



NEULAND
HAND



EST. 2016
Lettering exemplar created for you
by Heather Martinez of www.LetsLetterTogether.com

Neuland BigOne® and FatOne markers are recommended for writing Neuland Hand. Their size and broad edge are ideal for large lettering and chart titles.

