



10' x 13' Rectangle AKZ Plus Cantilever Umbrella

Beautiful cantilever umbrellas in a variety of shapes and sizes allow you the flexibility to choose an umbrella design that fits your needs. With an array of fabrics to choose from, your patio umbrella can be as eye-catching as it is functional.



STANDARD BASE
W 34" / D 34" / H 7.5"
≈ 425LB WITH SAND



CONCRETE MOUNT



GROUND MOUNT



WOOD MOUNT



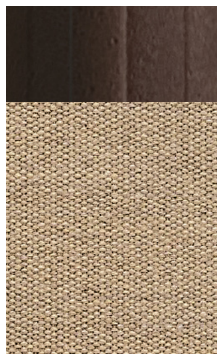
ROLLING BASE
W 34" / D 34" / H 7.5"
≈ 400LB WITH SAND

Scan me!
SUMMERHOUSEPATIO.COM

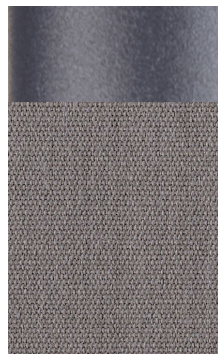


SUMMER
HOUSE

10' x 13' Rectangle AKZ Plus Cantilever Umbrella



BRONZE FRAME
SAND



ANTHRACITE FRAME
BOULDER



BLACK FRAME
BLACK

ACRYLIC FABRICS

MANUFACTURED BY SUNBRELLA & OTHERS WITH A 5 YEAR WARRANTY AGAINST FADING. **SPECIAL ORDER ONLY.**

POLYESTER FABRICS

MANUFACTURED BY O'BRAVIA WITH A 4 YEAR WARRANTY AGAINST FADING.

- INFINITE FRONT TO BACK TILT
- LEFT TO RIGHT TILT AT 18°, 36°, AND 54°
- FOOT PEDAL 360° ROTATION CAPABILITY
- HARDWARE FOR INSTALLED MOUNTS AVAILABLE BY SPECIAL ORDER
- THIS MODEL IS **NOT RECOMMENDED** FOR ROOFTOP DECKS OR HIGH WIND



Helping you create the perfect outdoor oasis is our number one priority. Transform your space today!



SUMMER
HOUSE

OFFERING ONLY THE FINEST OUTDOOR FURNITURE AND ACCESSORIES IN THE PACIFIC NORTHWEST - GUARANTEED

LAST UPDATED 2.15.24