

KEFEYA

S2 USER'S GUIDE



KEFEYA
TRI SCREEN

————— LAPTOP SCREEN EXTENDER —————

Warm tip:

1. Please ensure type-c data wire is connected well with device interface.
2. This product supports whole function of type-c (charging and video), integrated one line. If screen cannot be powered on or restarted, please supply external power of 5V, 2A.
3. The HDMI interface used to connect the product must use the custom HDMI TO TYPE-C data cable included in the product packaging and be externally powered.

Windows

Mac

Android

Product Introduction

S2 is a multi-function plug and play dual-screen laptop monitor that is portable, foldable, It can help quickly build a personal mobile studio. Provide a perfect solution for laptop users with multi-screen synchronous display and multi-screen separate display, which can improve your work efficiency by up to 50% and achieve efficient multi-tasking. It supports the same screen display of some models of Samsung, Huawei and others. It also supports the computer mode of the smart phone system as well as audio and video transmission, etc.

S2 holder is easy to use. Clamp the holder to the top of the computer screen, and it can be easily fixed without falling off. It can support the case of laptop from 13 inches to 17.3 inches, and can be removed and used as a single screen. The screen has its own support that can be adjusted for different angles, providing different fun experience for professionals, office workers, gamers, stock traders, entrepreneurs, programmers and students.

The S2 screen can independently adjust parameters such as brightness, sound, and contrast. It is equipped with HDMI/Type-C interfaces, allowing for versatile video and data expansion without the need for a docking station. As long as it is a Type-C laptop with combined signal and power capabilities, you can achieve a seamless connection and display. Devices such as desktop computers, laptops, mini PCs, set-top boxes, and gaming consoles with HDMI output interfaces can directly connect to the display. However, the screen needs to be powered externally in order to light up (using the custom HDMI TO TYPE-C cable to connect the product to the computer).

Finally, S2 screen splitter can provide a complete 180 degree rotation on a single screen. You can choose your best view angle for the optimum visual experience.

Contents Of Instruction

Product Attributes

1. Product host	1
2. Accessories	1
3. Parameters	1

Installation and stowing Mode

1. Opening mode	2
2. Outrigger stretch	2
3. Fixing mode of device	2
4. Opening mode when it is working	3
5. Stowing of dual screen	3

Key Definition	3
----------------------	---

Connection Mode

1. Connect S2 with Laptop	4
2. Device power supply connection mode	5

Audio Settings

1. Change sound settings of Windows 10 / Windows 11	6
2. Change sound settings of MAC OS PC	7

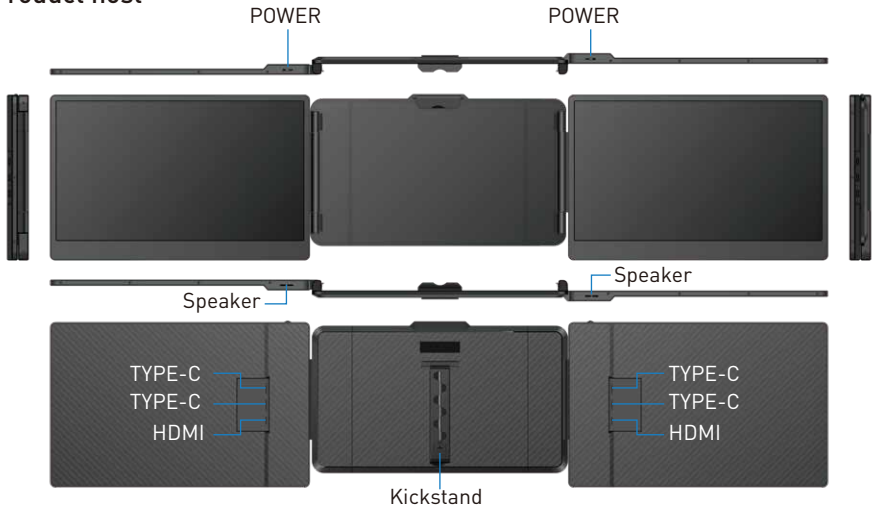
Display Mode

1. Windows 10 / Windows 11 Display Settings and Configuration	8
2. MacOS 13 Ventura Display Settings and Configuration	9

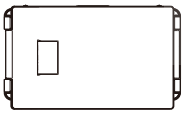
Transportation, Storage and Safety Information	10
--	----

Product Attributes

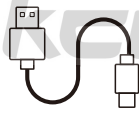
1. Product host



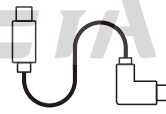
2. Accessories



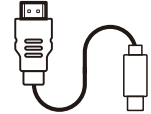
HOST



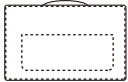
USB-A to USB-C *2



USB-C to USB-C *2



HDMI to TYPE-C



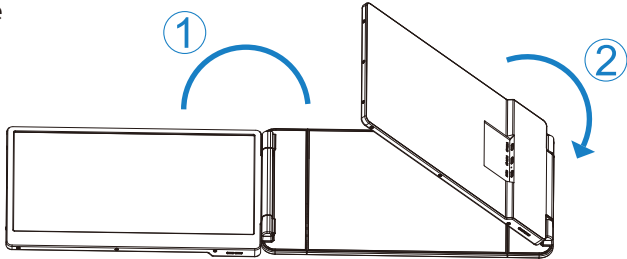
BAG

3. Parameters

Weight:	1.62 Kg	Contrast:	1000:1
Screen Scale:	16:9	Screen Size:	14 Inches
Color Fields:	45%	Panel Type:	IPS Wide Viewing Angle
Size:	353x207x38.7mm	Average Brightness:	300CD/M ²
Refresh Rate:	60hz	Type-c Input:	5V-20V / 5A Max
Resolution:	1920x1080 P	Type-c Output:	5V-20V / 4.25A Max
Speaker:	2	Port:	Type-cx3

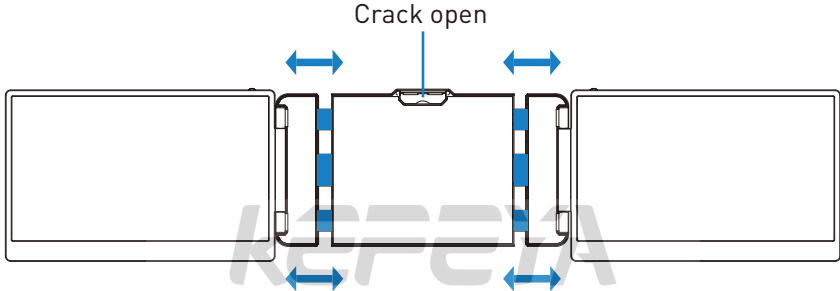
Installation And Stowing Mode

1. Opening mode

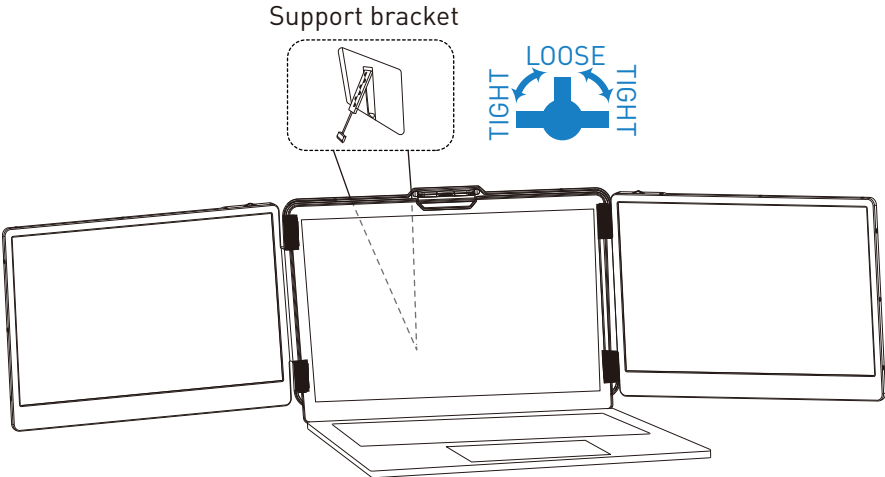


*Note: sequence of open and close must be performed to avoid damage of device

2. Outrigger stretch

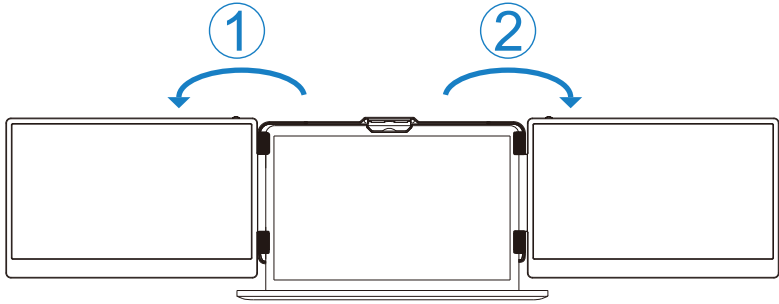


3. Fixing mode of device

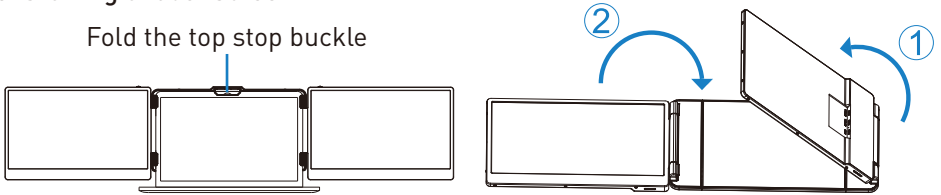


Installation And Stowing Mode

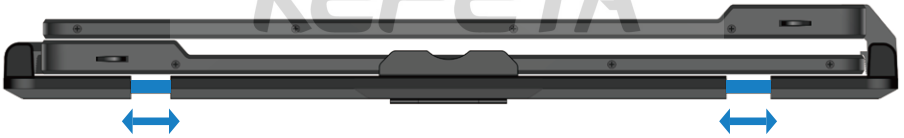
4. Dual Screen Opening With Computer



5. Stowing of dual screen



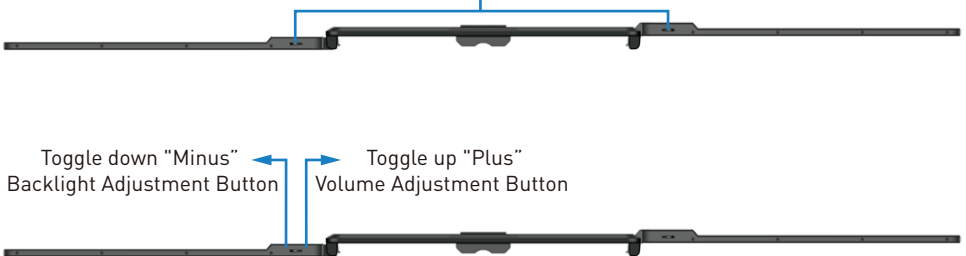
Note: sequence of open and close must be performed to avoid damage of device.



When folding the screen, the bracket must be pulled out to an appropriate size as shown in the picture, and the screen must be fixed in the silicone of the bracket, otherwise forcibly closing it will damage the screen!

Key Definition

Menu/Selection/Confirmation Button
Press and hold for 2 seconds to return. Press and hold for 3 seconds to shut down

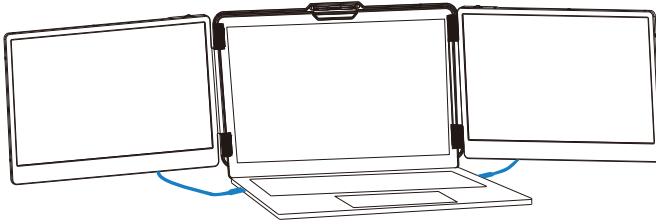


Connection Mode

1. Connect S2 with Laptop

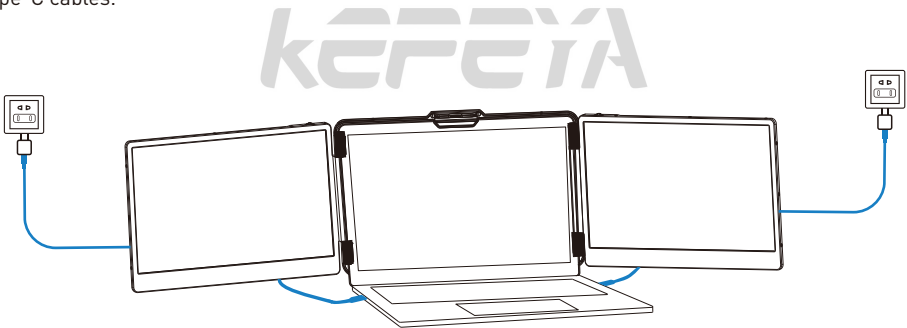
Connect S2 to your laptop and check that your laptop has a Type-C, Type-A or HDMI port that can provide 5V/2A power.

Connect S2 to your laptop through S2's Type-C and HDMI port, following the options below:



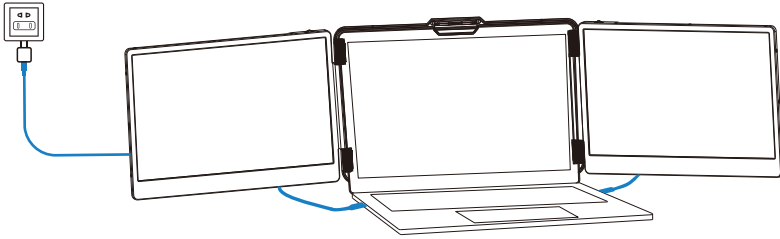
Connect to S2 through the Type-C interface of the notebook

Option 1: If your laptop has two Type-C ports (full function ports), and the Type-C output port of the laptop can provide more than 5V/2A power supply, directly connect the S2 and the laptop with two Type-C cables.



Option 2: If your laptop has 2 Type-C ports (full function ports), and your laptop Type-C outlet cannot provide more than 5V/2A power supply or the display has no signal/the signal is unstable after connection, then you need to connect an external 5V/2A adapter to power S2. Then connect the S2 to the laptop with two Type-C cables.

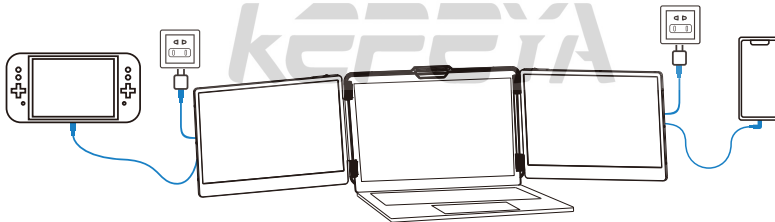
Connection Mode



To connect the S2 screen to your laptop via the HDMI interface, follow these steps:

Option 3: If your laptop has both a Type-C and an HDMI port, you can use a Type-C cable to connect the S2 screen to the Type-C port of your laptop, and then use an HDMI TO TYPE-C cable to connect the S2 screen to the HDMI port of your laptop. After that, you can connect a 5V/2A adapter to power the S2 screen.

2. Connect S2 with Mobile Phone with Other Devices



Switch connection mode
(External Type-c power)

Mobile phone connection mode
(External power needed)

Audio Settings

1. Change sound settings of Windows 10 / Windows 11

1.1 Right click the loudspeaker icon down-right

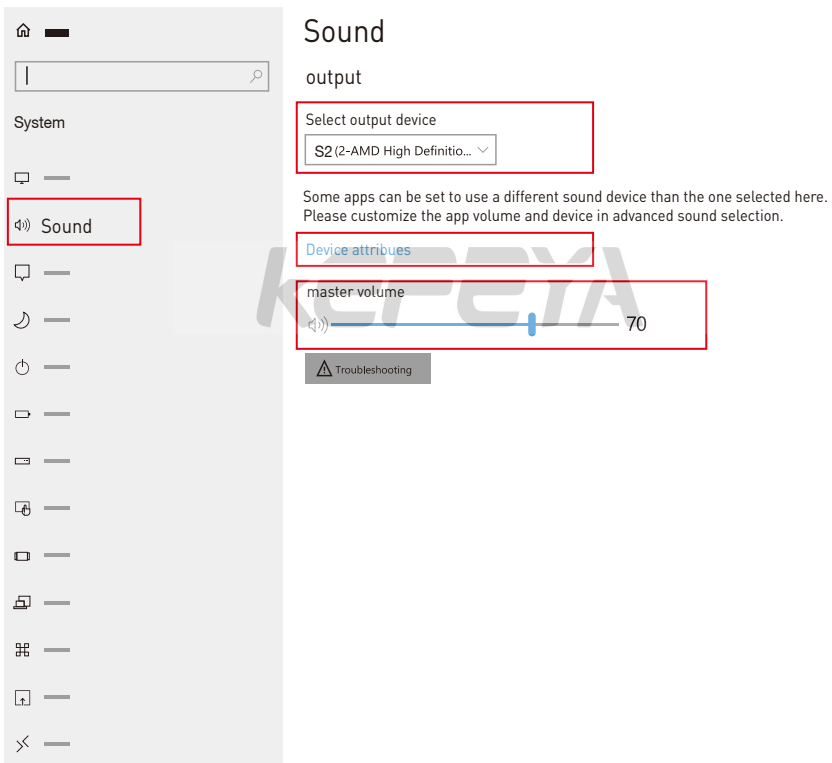


1.2 Select "switch on sound " in pop-up dialog box

1.3 Left click "turn on sound settings" and pop-up the box as provided,Here users can set about sound;

Here users can set about sound

1. Master volume;
2. Select output device: { S2-R / Speaker };
3. Device attributes.



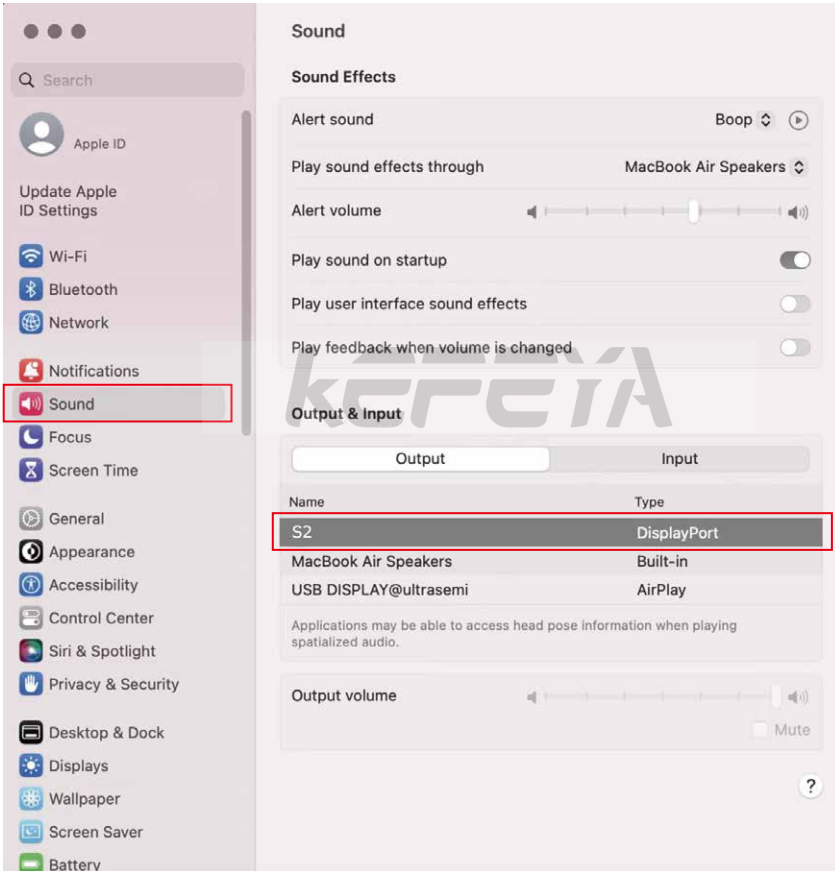
Audio Settings

2. Change sound settings of MAC OS PC

2.1. Choose Apple menu > System Settings



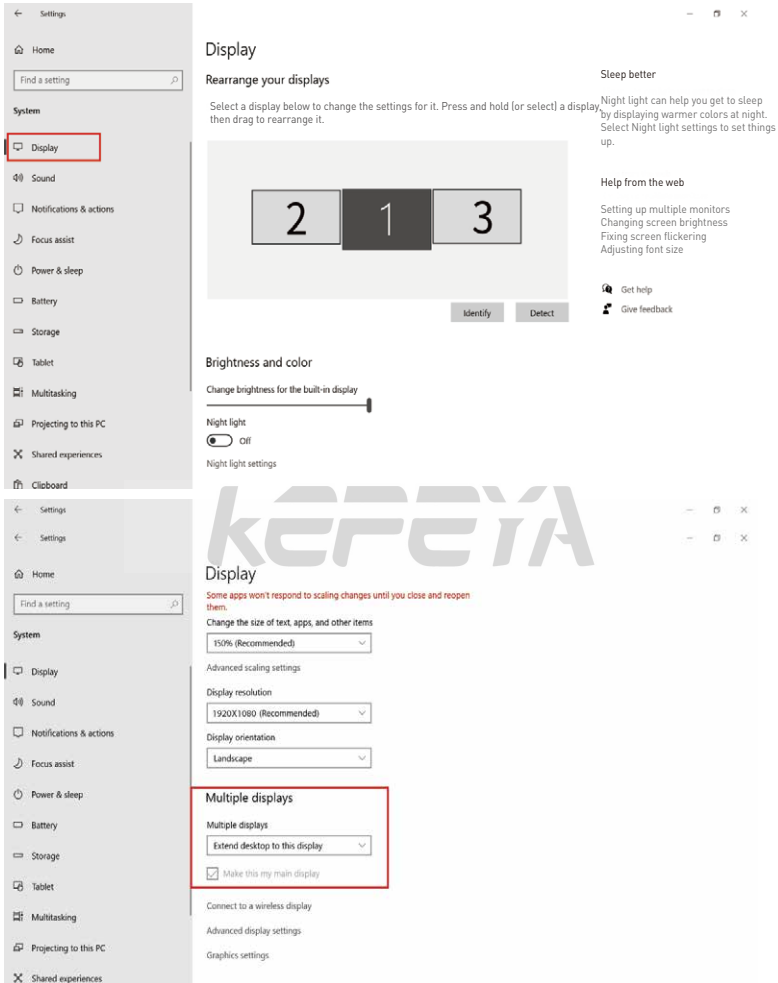
2.2. Click "Output", then select the device you want to use in the list of sound output devices: [S2 / Speaker]



Display Mode

1. Windows 10 / Windows 11 Display Settings

- 1.1 Right-click a blank area of the desktop. Select 'Display Settings' from the pop-up dialogue box. Left-click "Display Settings" to open the settings dialogue box, as shown.



- 1.2 Under the "Rearrange displays" section, drag and drop each display to rearrange them according to their physical layout on your desktop. Scroll down to the bottom of the page to further configure the display for extended or mirrored mode.

Display Mode

2. MacOS 13 Ventura Display Settings

2.1 Enter the "System Preferences" menu



2.2 Configure your monitor

In this menu, you can set the resolution and mirror/expand the display you want.



2.3 Arrange Displays

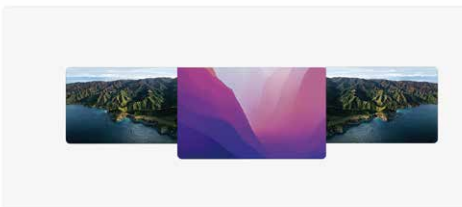
To rearrange displays, drag them to the desired position.

To mirror displays, hold Option key while dragging them on top of each other.

To relocate the menu bar, drag it to a different display.

Arrange Displays

To rearrange displays, drag them to the desired position. To mirror displays, hold Option while dragging them on top of each other. To relocate the menu bar, drag it to a different display.



Done

Transportation, Storage And Safety Information

In order to ensure the normal use of this product and prevent accidents such as electric shock or fire, please read and understand all use requirements and operation procedures before using.

Please strictly abide by the following requirements.

1. Please tear off the protective film on the screen surface before use.
2. The DC power supply required by this product is AC/DC power adapter, which should be far away from heat source and placed in a well ventilated place. The AC power socket and AC power line should be well grounded and can withstand enough current demand.
3. The DC power input required by this product is 5V-20V \pm 2V.
4. Attention should be paid to avoid excessive humidity and dust, so as to avoid circuit corrosion and failure.
5. Screen surface should not be challenged by external force.
6. Do not use sharp tools to touch the screen surface.
7. This product fits general business and domestic use, and ambient temperature ranging from -20~60°C is recommended.
8. Please power off power source when stop using device.

KEFEYA