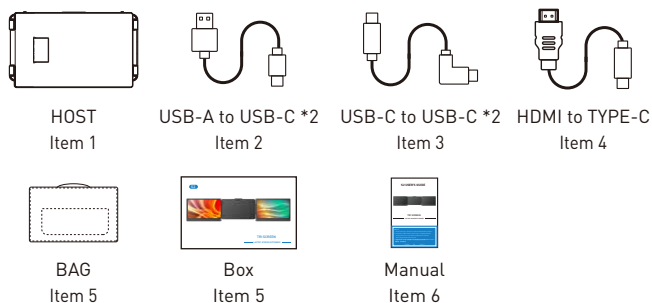
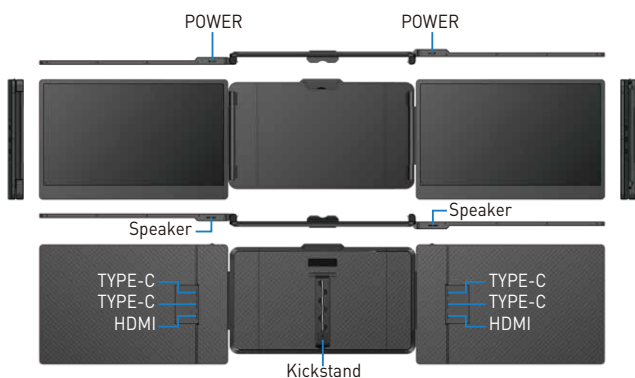


Multi-functional Touch Screen Monitor

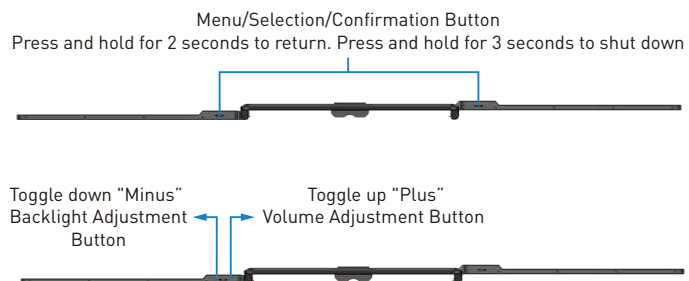
Packing List



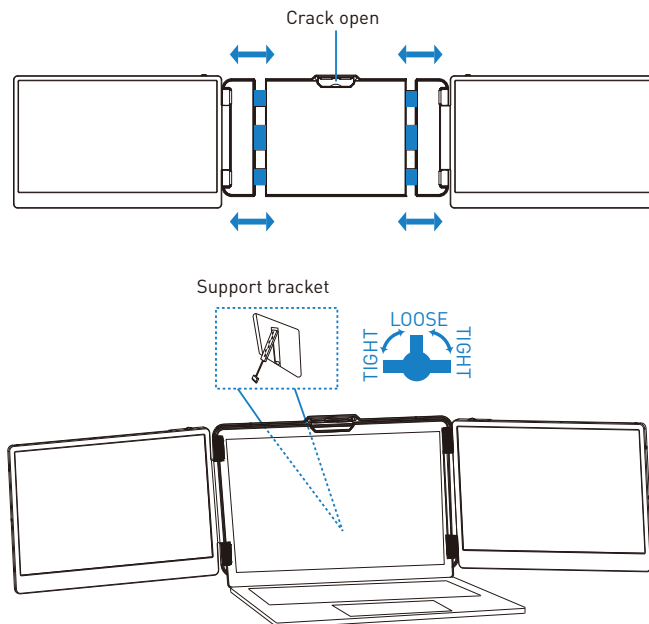
These Ports You Need to Know



Key Definition



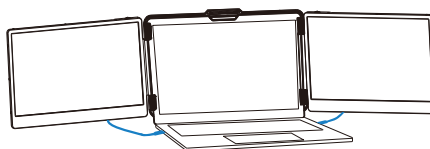
Landscape and Portrait Modes



How to Connect

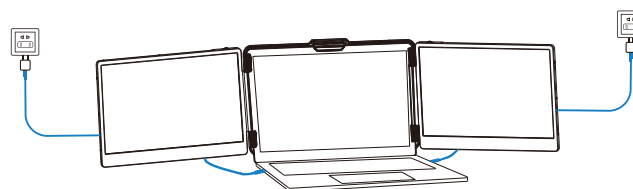
Connect S2 with Laptop

Connect S2 to your laptop and check that your laptop has a Type-C, Type-A or HDMI port that can 5V/2A power. Connect S2 to your laptop through S2's Type-C and HDMI port, following the options below:

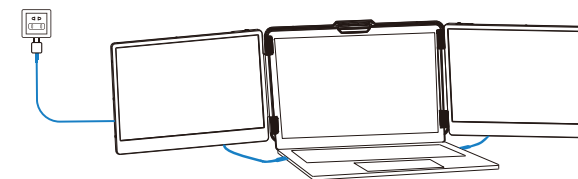


Connect to S2 through the Type-C interface of the notebook

Option 1: If your laptop has two Type-C ports (full function ports), and the Type-C output port of the laptop can provide more than 5V/2A power supply, directly connect the S2 and the laptop with two Type-C cables.



Option 2: If your laptop has 2 Type-C ports (full function ports), and your laptop Type-C outlet cannot provide more than 5V/2A power supply or the display has no signal/the signal is unstable after connection, then you need to connect an external 5V/2A adapter to power S2. Then connect the S2 to the laptop with two Type-C cables.



To connect the S2 screen to your laptop via the HDMI interface, follow these steps:
Option 3: If your laptop has both a Type-C and an HDMI port, you can use a Type-C cable to connect the S2 screen to the Type-C port of your laptop, and then use an HDMI TO TYPE-C cable to connect the S2 screen to the HDMI port of your laptop. After that, you can connect a 5V/2A adapter to power the S2 screen.

Q&A

Q1: How can I tell if the USB-C port on my computer is full-featured?

A1: USB-C port coming with one of the following symbols is a full-featured USB-C port. Thunderbolt 3 or thunderbolt 4 port is also full-featured. You can view the port parameters in the manual or on the network.



Q2: Why does one monitor show "No Signal" ?

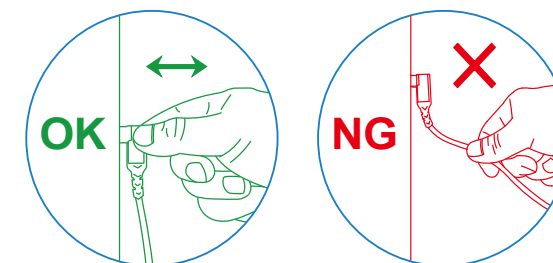
A2: The connection may have failed or the computer port does not support video output. Please contact us for troubleshooting. We'll offer solution as soon as possible!

Q3: The screen does not light up after connecting?

A3: It may be that your computer does not have enough power. Please charge the monitor using an external power source that provides 5V/2A power. You can also contact us for further solution.

Tips for Use

Please refer to the pictures below to insert or unplug the data cable to avoid damage.



For more detailed information please check the manual of the product.