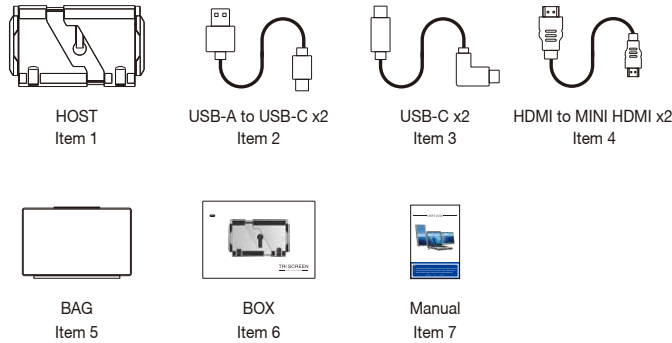
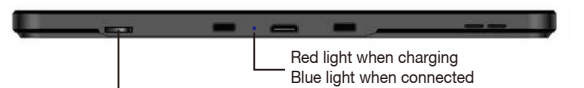


Portable Triple Screen Laptop Workstation

Package Contents



Product Overview



Menu/Selection/Confirmation Button
Press and hold for 2 seconds to return. Press and hold for 3 seconds to shut down

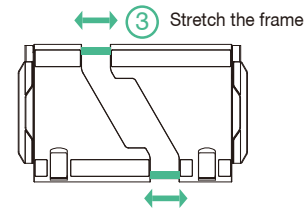
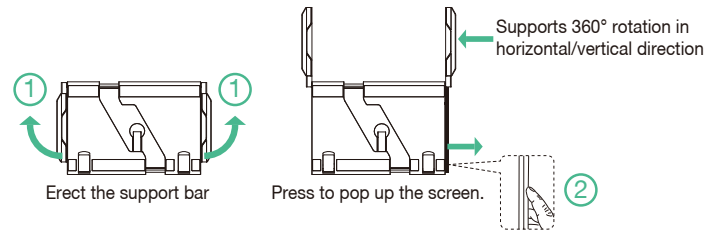


Toggle up to increase, and toggle down to screen toggle switch and bracket decrease.

Note: The key definitions are opposite on the left screen.

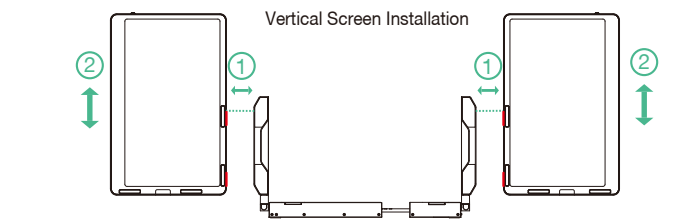
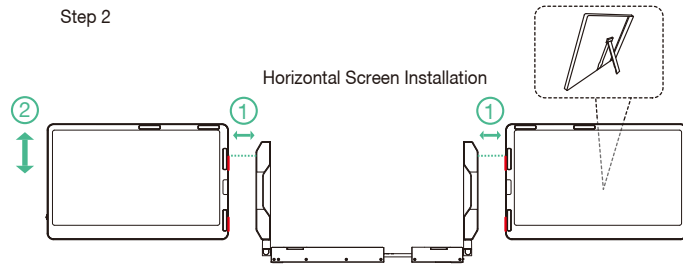
Installation

Step 1: Take out screen, and adjust the workbench



Note: The maximum stretching length of the bracket is 408mm

Step 2



Connection Methods

1.If your laptop has 2 full-function USB Type-C ports:
If your USB-C port can deliver 5V/2A power, use the provided USB C to C cable to connect the USB-C port. If your laptop cannot provide 5V/2A power, the screen may have no signal or the signal may be unstable. Then you need to connect an external 5V/2A adapter to power F2.



TYPE-C Connection



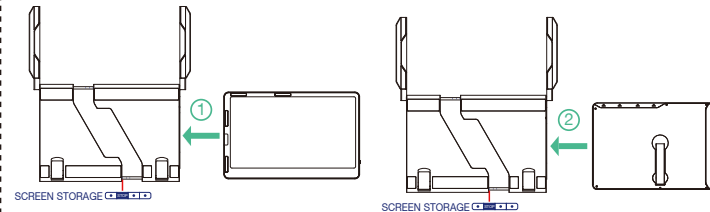
2.If your laptop has 1 full-function USB Type-C, 1 USB-A and 1 HDMI port
You can connect one screen with a USB-C cable, and the other screen connected with USB-C to USB-A and HDMI cable.



HDMI & USB Connection

3. If your laptop has 2 HDMI and 2 USB-A Ports:
Connect each screen with an HDMI cable and a USB-A to USB-C cable.

Storage



- 1.Restore the workbench to its initial state by shrinking the frame.
- 2.Put the screen back to the inner storage box.
- 3.Put down the support bar horizontally.

Note: Be sure to restore the monitor in order to avoid damaging the device.

Q&A

Q1: How can I tell if the USB-C port on my computer is full-featured?

A1: USB-C port coming with one of the following symbols is a full-featured USB-C port. Thunderbolt 3 or thunderbolt 4 port is also full-featured. You can view the port parameters in the manual or on the network.



Q2: Why does one monitor show "No Signal" ?

A2: The connection may have failed or the computer port does not support video output. Please contact us for troubleshooting. We'll offer solution as soon as possible!

Q3: The screen does not light up after connecting?

A3: It may be that your computer does not have enough power. Please charge the monitor using an external power source that provides 5V/2A power. You can also contact us for further solution.

Tips for Use

Please refer to the pictures below to insert or unplug the data cable to avoid damage.

