



Where To Give Im Testosterone Injections - Where to inject Testosterone Intramuscularly into the body

The best spot to inject testosterone is 2 to 3 inches underneath the iliac You can locate the peak by feeling the highest bone area above both glute This is an excellent area for injection since the muscle in this region has few nerves, few blood vessels, and is rather

=====

🏆 Injectables AAS / Oral AAS / HGH / Weight Loss / Peptides / Post Cycle Ttherapy

🔹 High Quality / Secured Payment / Guaranteed Confidentiality / Private Data Protection

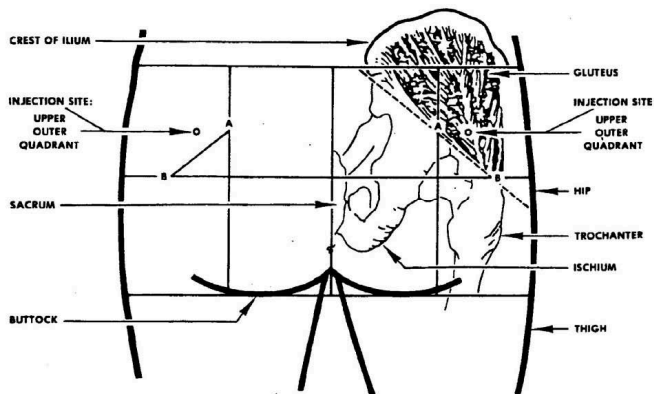
🔹 Customer support / International shipping / Secure & private

🔹 VISIT OUR SHOP: <https://t.co/FmJZPuzocq>

=====

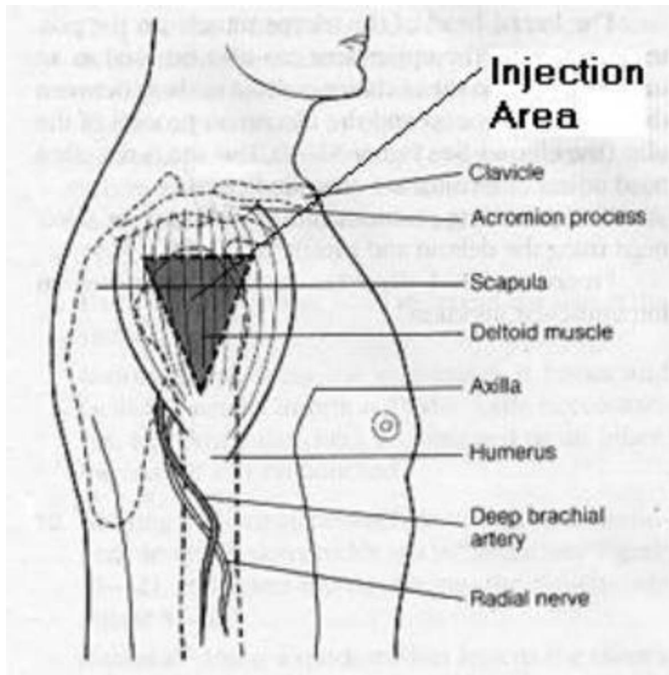
Testosterone is injected under the skin or into a muscle, usually given every 2 to 4 Testosterone injections should be given only by a healthcare The length of treatment with testosterone injection will depend on the condition being

How to Self-Inject Testosterone - Hormone Injection Instructions



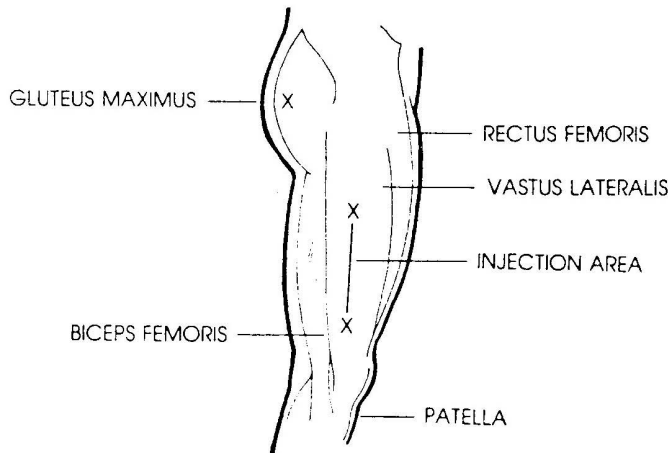
What's the best place to inject testosterone? This is really about personal preference; where it's the least painful and easiest for you to If you have help in the form of a loved one or friend, you can do an intramuscular injection in the upper outer glute or the

How to do an Intramuscular Testosterone Injection | Optimale



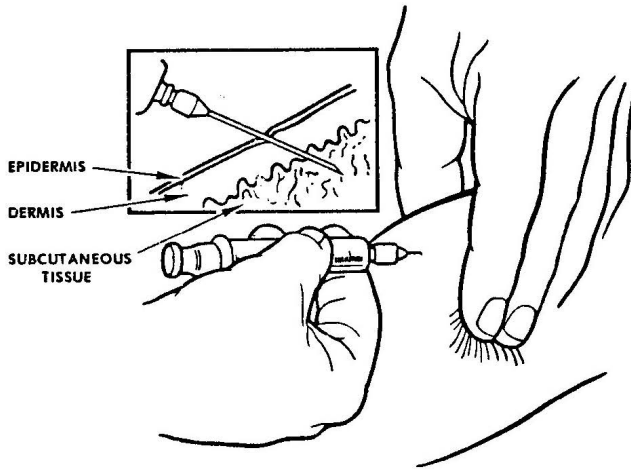
Place the heel of your hand on the bone (femur) that ends before the knee bends and aim the injection right above the V in the centre of the Step 3: Preparing the Injection Dose Check the packaging of the syringes and needles you are going to use. If the packaging has been opened or damaged, do not use those syringes or needles.

Testosterone (Intramuscular Route, Subcutaneous - Mayo Clinic)



A nurse or other trained health professional will give you this medicine in a medical setting. It is given as a shot into your muscle (usually in the buttocks). Xyosted™ injection is given as a shot under your skin in the stomach. You or your caregiver may be trained to prepare and inject Xyosted™ injection at home.

The Best Injection Sites for an Intramuscular Injection



Where Are the Four Injection Sites? There are four sites you can use to give yourself an IM. These sites have large, easy-to-locate muscles with little fatty tissue. Upper Arm: Your deltoid muscle is in your upper arm, just below your shoulder. To find this site, feel for the bone at the top of your arm where your arm meets your shoulder.

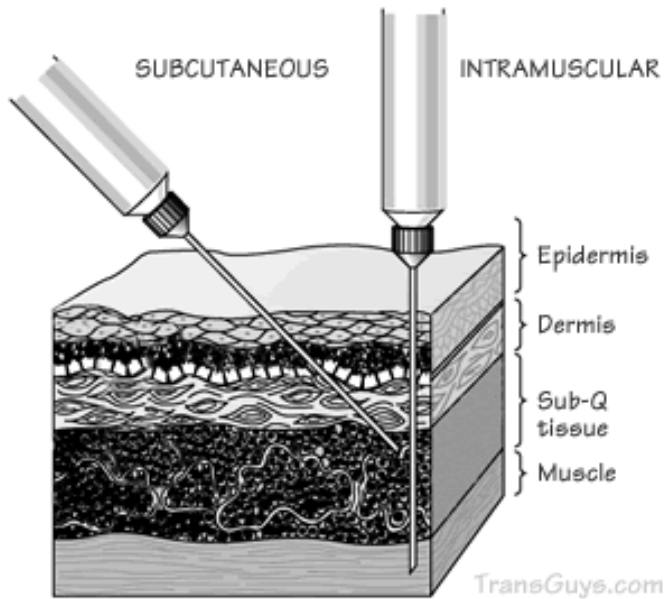
How To Give Myself A Testosterone Injection - Hazeljlabado



Step 1 Gather all the supplies needed for your testosterone injection and place them on a clean and sterile staging. Testosterone injection is given as a shot under your skin in the stomach. Form a V with your fingers by separating your first finger from the other 3.

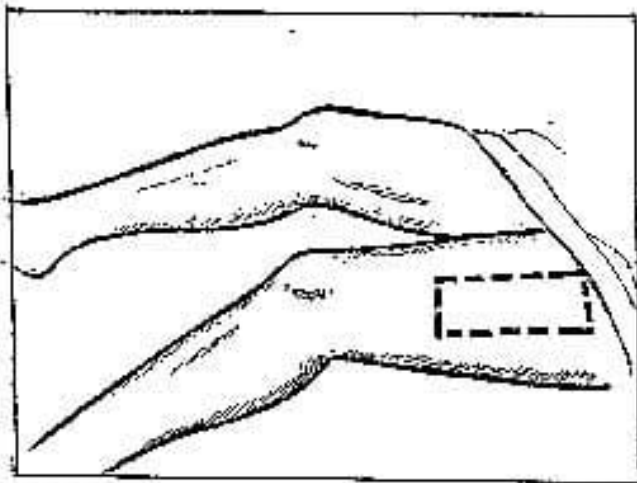
How To Give An Intramuscular Injection (IM Injection)

Subcutaneous vs. Intramuscular Injections



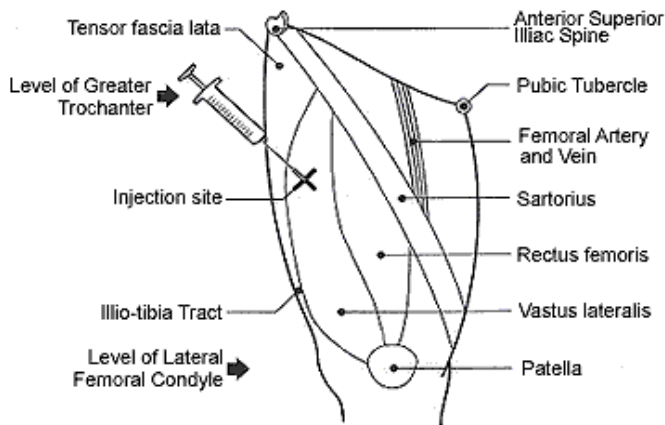
The place to give the injection is in the middle of the The hip is a good place for an injection for adults and children older than 7 Upper arm muscle: Completely expose the upper You will give the injection in the center of an upside down Feel for the bone that goes across the top of the upper

Where To Buy Testosterone Injections



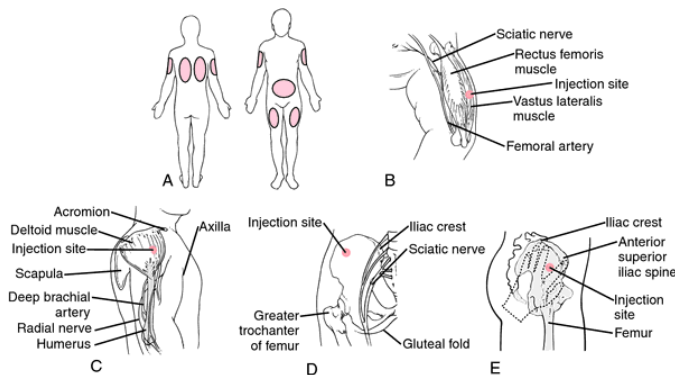
There are several physician and clinic options men can choose from when determining how to get a prescription for testosterone injections and the best place to buy testosterone, whether locally or Primary Care Physician: The first option is to visit your primary care

Where Do You Give an Intramuscular Injection? - MedicineNet



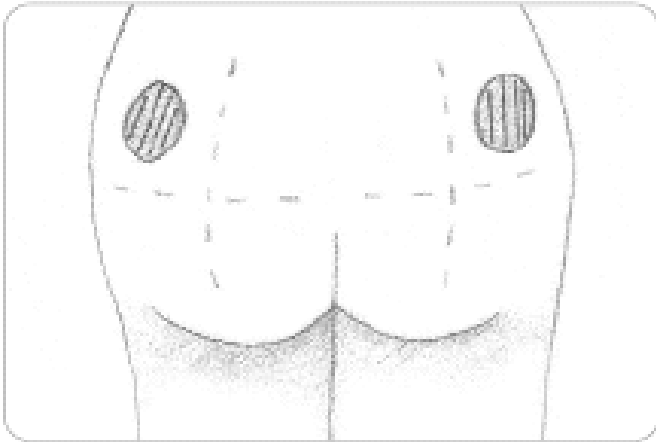
Intramuscular injections are given into specific muscles with the most common injection sites being:
 The deltoid muscle of the upper arm (typically used for vaccines and cannot be used for self-injecting)
 The gluteal muscle of the buttock (injecting antibiotics, vitamins) (commonly done in the ventrogluteal site)

How To Inject Anabolic Steroids Intramuscular Injection



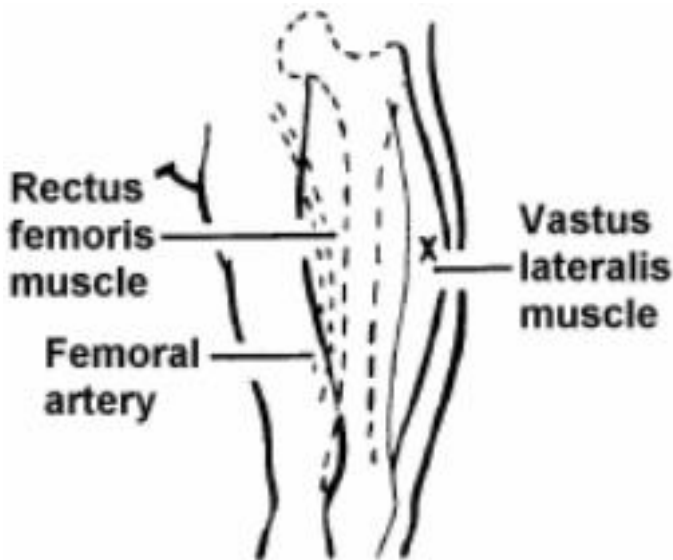
Steroid injections, also called corticosteroid injections, into a muscle (an intramuscular injection); into the spine (an epidural injection) They can be given in several different ways, including: into a joint (an intra-articular injection); into a muscle (an intramuscular injection); into the Nandrolone decanoate, sold under the

Reducing Intramuscular and Subcutaneous Injection Pain



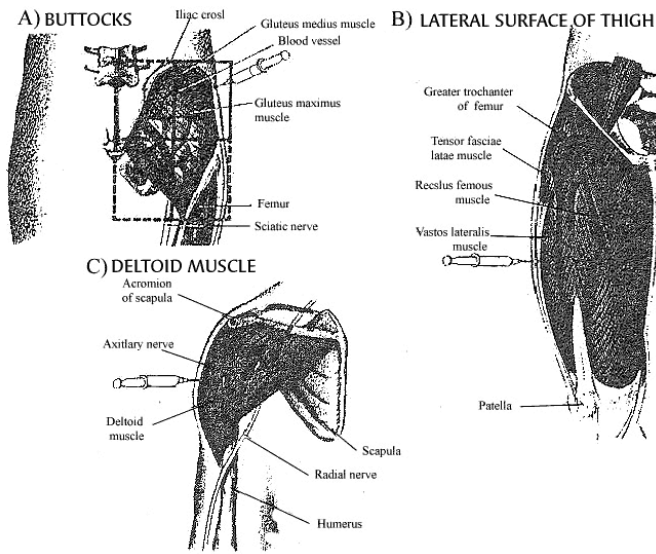
Four sites can be used to give an intramuscular injection: The upper arm just below the shoulder The outer or middle part of the thigh The muscular part of the hip just behind the hip bone The upper muscular part of the buttock Choosing the right site is necessary to avoid injury and ensure the proper absorption of the

Testosterone Injection (Intramuscular,Subcutaneous)



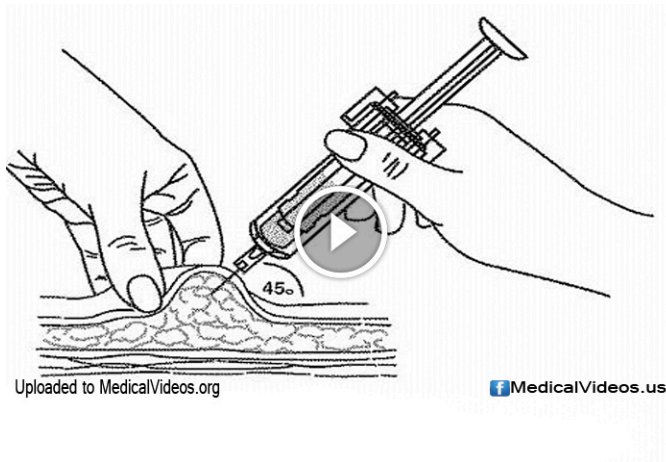
Use Testosterone Injection (Intramuscular,Subcutaneous) exactly as directed on the label, or as prescribed by your Do not use in larger or smaller amounts or for longer than

Testosterone therapy: Potential benefits and risks as you age



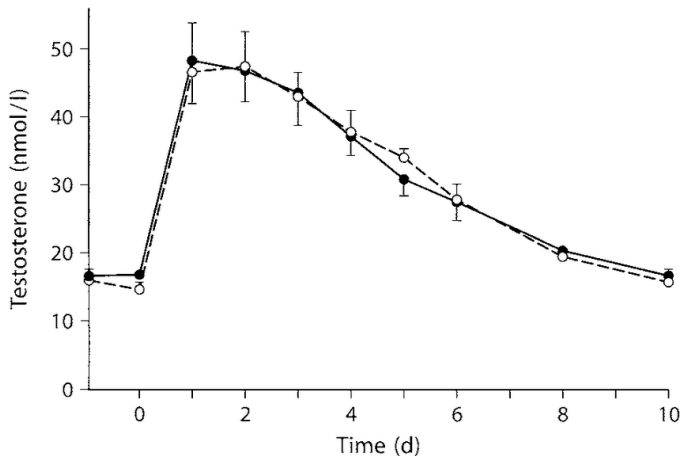
Hypogonadism hampers the ability to produce normal amounts of testosterone due to a problem with the testicles or with the pituitary gland that controls the Testosterone replacement therapy, in the form of injections, pellets, patches or gels, can improve the signs and symptoms of low testosterone in these

Toddler Showed Symptoms of Puberty After Exposure to Testosterone Gel



A 2-year-old showed signs of puberty after he was exposed to his dad's testosterone. He developed pubic hair and his height was off. Other parents assumed Barnaby was much older than 2 and asked his mom why he still used a baby. Barnaby Brownsell developed a "sizable" penis and pubic hair at the age of

How To Testosterone Injections - Hazeljlabado



Testosterone injections are administered through subcutaneous injections or intramuscular injections at various injection sites. Clean the rubber stopper with one alcohol swab. Preparing the Injection Dose Everyone wants and expects immediate results but unfortunately that is not

What Are The Ways To Give Yourself A Subcutaneous Testosterone Injection?

How to Administer IM (Intramuscular) Injections

Administer these vaccines via IM (intramuscular) route: DTaP, DT, Td, Tdap, Hib, hepatitis A and B, HPV, influenza, MCV4, PCV7, and rabies. Administer IPV and PPV23 either IM or SQ.

When you administer these vaccines, follow the age recommendations indicated in the current Minnesota immunization schedules.

Patient's age	Site (see illustrations below)	Needle size*	Needle insertion
Newborn/infant (Birth -12 months)	• Anterolateral thigh	• 1" needle • 5/8" in preemies or newborns (0-28 days old) if muscle mass inadequate • 23-25 gauge needle	Use a needle long enough to reach deep into the muscle. Insert needle at an 80° to 90° angle to the skin with a quick thrust. Retain pressure on skin around injection site with thumb and index finger while needle is inserted. Aspiration before injection is not required. ^{1(p.21)}
Toddler (12-36 months)	• Anterolateral thigh preferred • Deltoid when adequate mass developed	• 1" - 1 1/2" needle for thigh • 5/8" - 1" needle for deltoid • 23-25 gauge needle	Multiple injections given in the same extremity should be separated as far as possible (preferably 1" to 1 1/2" with minimum of 1" apart).
Children (3-10 years)	• Deltoid • Anterolateral thigh	• 5/8" - 1" needle for deltoid • 1" - 1 1/2" needle for thigh • 23-25 gauge needle	
Adults	• Deltoid preferred • Anterolateral thigh may be used if necessary	• 1" - 1 1/2" needle • 23-25 gauge needle	

*Red Book 2006, American Academy of Pediatrics

IM site for infants and toddlers (birth to 36 months of age)

Insert needle at 80-90° angle into vastus lateralis muscle in anterolateral aspect of middle or upper thigh.

IM site for older toddlers, children, and adults

Insert needle at 80-90° angle into densest portion of deltoid muscle above armpit and below acromion.

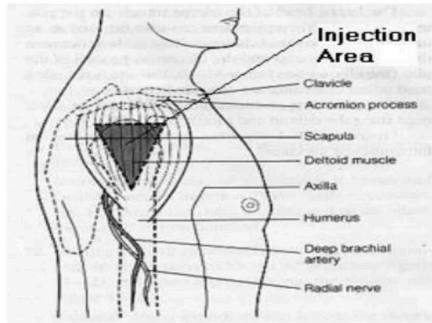
Minnesota Immunization Program
MDH
 P.O. Box 64975
 St. Paul, MN 55164-0975
 651-201-8503 or 1-800-657-3970
www.health.state.mn.us/immunize

(10/2007) IC#141-2380

January 13, 2022 by Rachel Using a testosterone injection is considered as an IM which is an intramuscular injection used as a minimal testosterone. It requires a lot of medication through which you can use this injection directly in your muscle. It can't be used without medication and guidance because there are so many tissues used.

Intramuscular Injection - StatPearls - NCBI Bookshelf

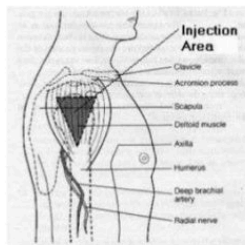
Deltoid IM Injection Site



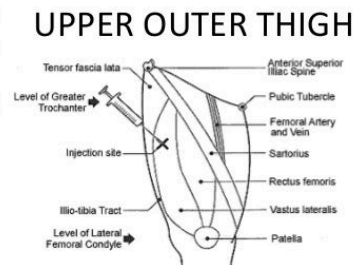
The heel of the opposing hand is placed in the greater trochanter, the index finger in the anterior superior iliac spine, and the middle finger below the iliac crest. The drug is injected into the triangle formed by the index, middle finger, and the iliac crest. Deltoid[1] 5 to 5 cm below the acromion process. Vastus Lateralis

How to Inject Steroids (Steroid Injections) - Steroid Cycles

IM injection

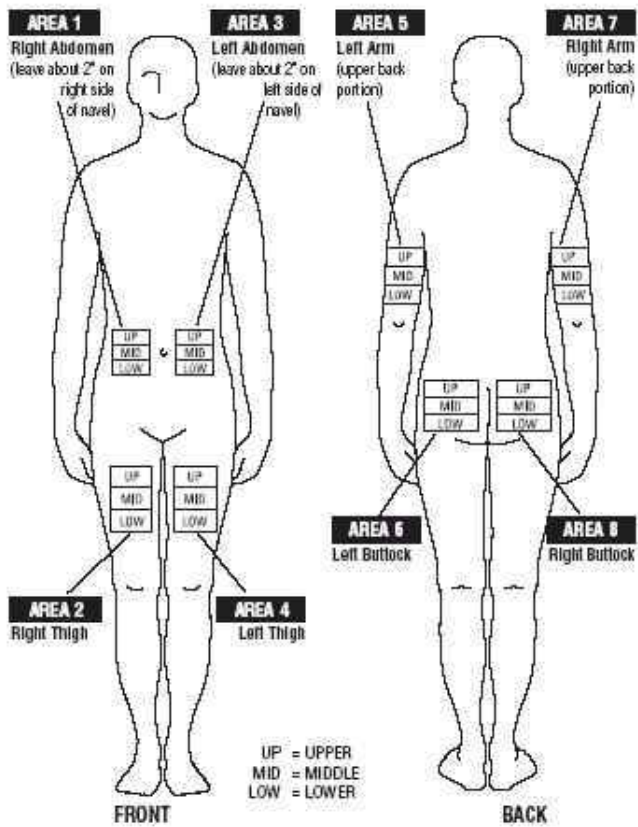


DELTOID



Intramuscular (IM) injections. Injecting in the muscle is the method used for anabolic. These intramuscular injections ensure the solution is entered deep into the muscle where it can then travel steadily and safely into the blood through smaller veins, rather than being placed directly into the

Testosterone cypionate | Side Effects, Dosage, Uses, and More



Testosterone cypionate (Depo-testosterone) is an injectable drug used to treat hypogonadism in Learn about side effects, warnings, dosage, and

[Previous Page](#) - [Next Page](#)