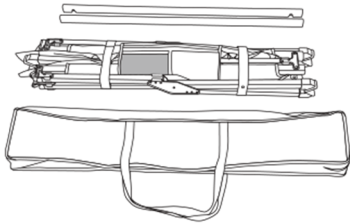


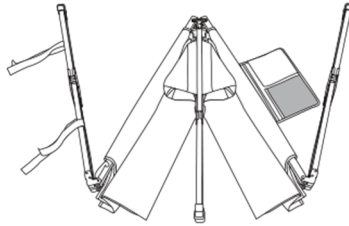


EVER ADVANCED

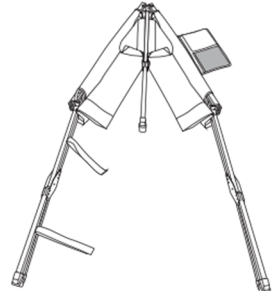
Camping Cot(BD-82701)



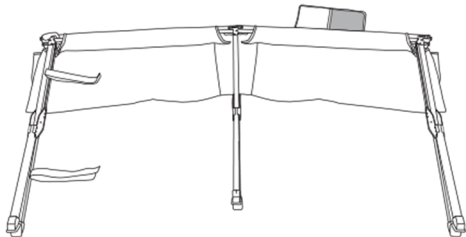
- ①. Place the carry bag horizontally on the ground and take out all contents.



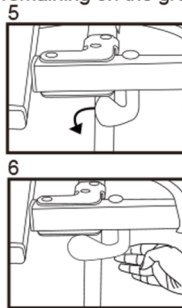
- ②. Unwrap the two Velcro tapes and extend the frame, while remaining on the ground.



- ③. Turn two side legs upside down 180 degrees.

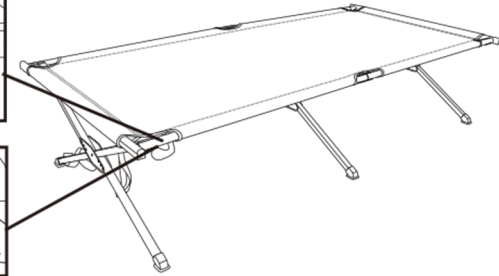


- ④. Flip open the cot to standing position. Be cautious when folding out the legs to avoid injuries to fingers and hands.



- ⑤. Slide the bar through the pocket at the foot and head of the cot. The notch of bars is fit over the button on the cot and can be pushed down to lock in place.

6. Rotate the lever arm to the lock position to lock the end bar in place.



**EVER ADVANCED,
EVER FEARLESS**

Warranty

The EA Camping Cot is covered by 12-month quality warranty.

Contact Us

Website: www.everadvanced.com

Email: info@everadvanced.com

 @everadvanced

 @everadvanced

Safety Tips

- This cot holds a maximum weight of 250lbs/113.6kg. Do not exceed.
- Do not sit on head or foot of the cot.
- To avoid tipping, use caution when sitting down or standing up from the cot.
- Use cot only on level ground.
- To avoid finger injuries, use care when assembling up or disassembling the cot.