



# INSTALLATION GUIDE

22+/**FORD RAPTOR**

## PHANTOM FRONT BUMPER



### PREPARATION

**We recommend reading through the installation instructions in whole before performing the work.**

- Disconnect the negative battery terminal. Park the vehicle on level ground and set the emergency brake.
- When button head bolts are being used, install the supplied washer on the nut side. Then, hold the bolt stationary and only turn the nut to tighten. Do not turn the bolt to tighten hardware assembly, unless otherwise noted.
- Anti-seize is recommended for all fasteners.



#### SKILL LEVEL

-Easy/Intermediate

**\*\*This installation requires 2 people for best results\*\***



#### TIME REQUIRED

- 4 hours for OEM Removal/Bumper Install
- 1 Additional Hour to Wire Cube Lights

**\*\*Labor Rates are based on a vehicle with no pre-existing damage. Wiring labor is based on a standard wiring procedure with light switches installed in an easily accessible location. Custom light triggering or switch mounting location will result in a greater labor charge.\*\***



#### INCLUDED IN KIT

- 2- Nylon Lock Nuts (1/2-13")
- 2- Button Head Bolts (1/2-13 X 1 1/2")
- 2- Flat Washer (1/2")
- 8- Nylon Lock Nuts (1/4-20")
- 8- Button Head Bolts (1/4-20 X 1")
- 8- Flat Washer (1/4")
- 2- Hex Head Bolt (3/8-16 x 1 1/2")
- 5- Nylon Lock Nuts (3/8-16")
- 11- Flat Washers (3/8")
- 4-Button head bolts (1 1/4")



#### TOOLS REQUIRED

- (Sockets) 7/16, 9/16, 3/4, 8mm, 10mm, 13mm, 15mm, 21mm
- (Box end wrenches) 7/16, 9/16, 3/4, 8mm, 10mm, 13mm, 15mm, 21mm
- (Allen wrenches) 5/32, 7/32, 5/16
- Fastener remover or flathead screwdriver
- Zip ties
- Ratchet

## PHANTOM FRONT BUMPER

22+/**FORD RAPTOR**

### STEP 1

Remove the 6x bolts to release the OEM skid plate using a (13mm socket).

## REMOVAL





# INSTALLATION **GUIDE**

## PHANTOM FRONT BUMPER

22+/FORD RAPTOR

### STEP 2

Remove the skid plate spacer.

## REMOVAL



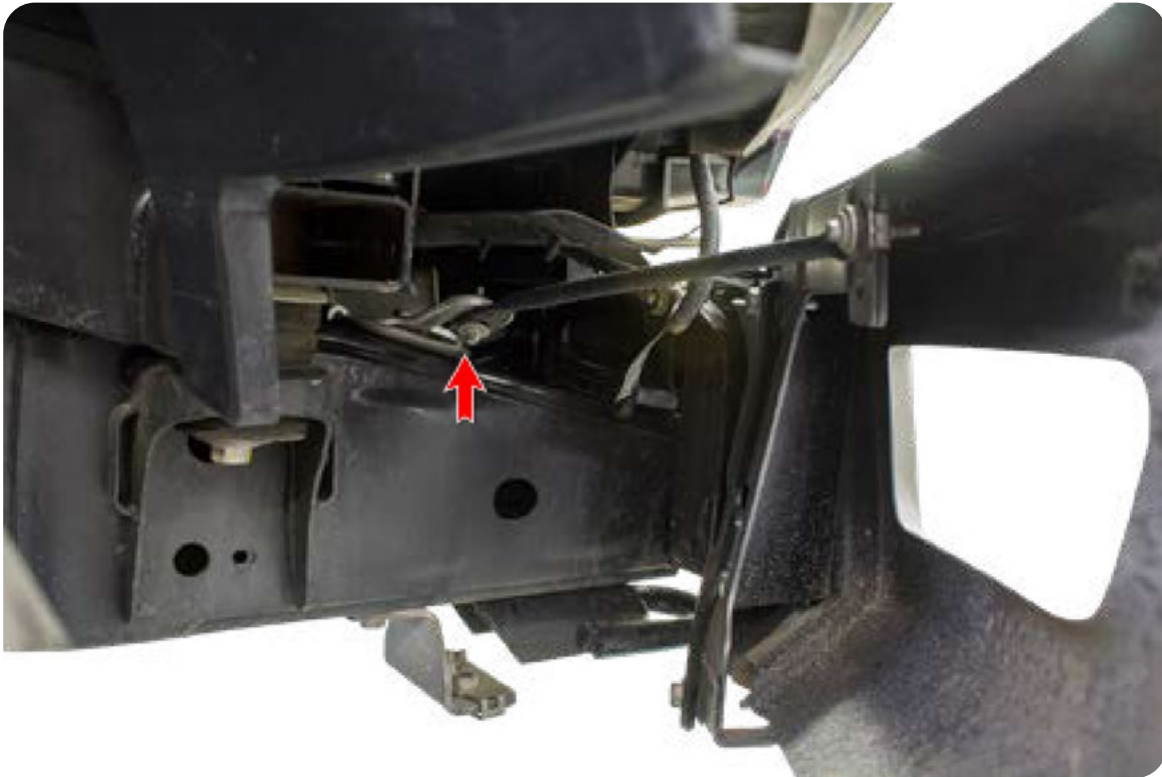
## PHANTOM FRONT BUMPER

22+/FORD RAPTOR

### □ STEP 3

Remove the support brackets holding the bumper to the frame horns using a (8mm socket). (Repeat on other side)

## REMOVAL



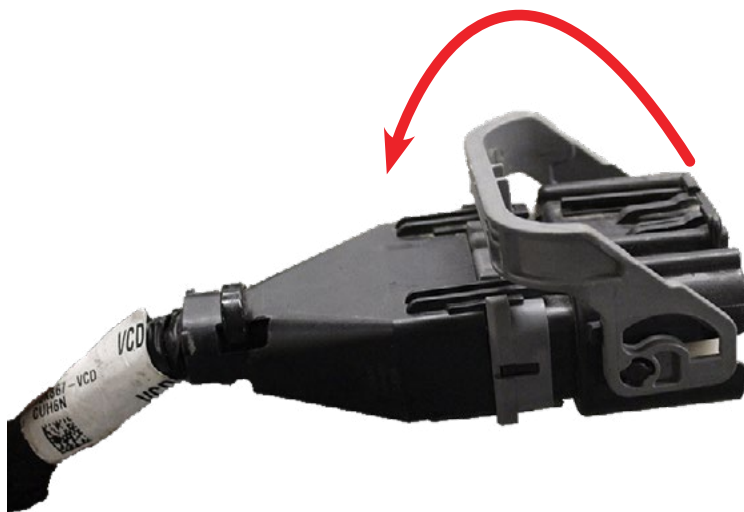
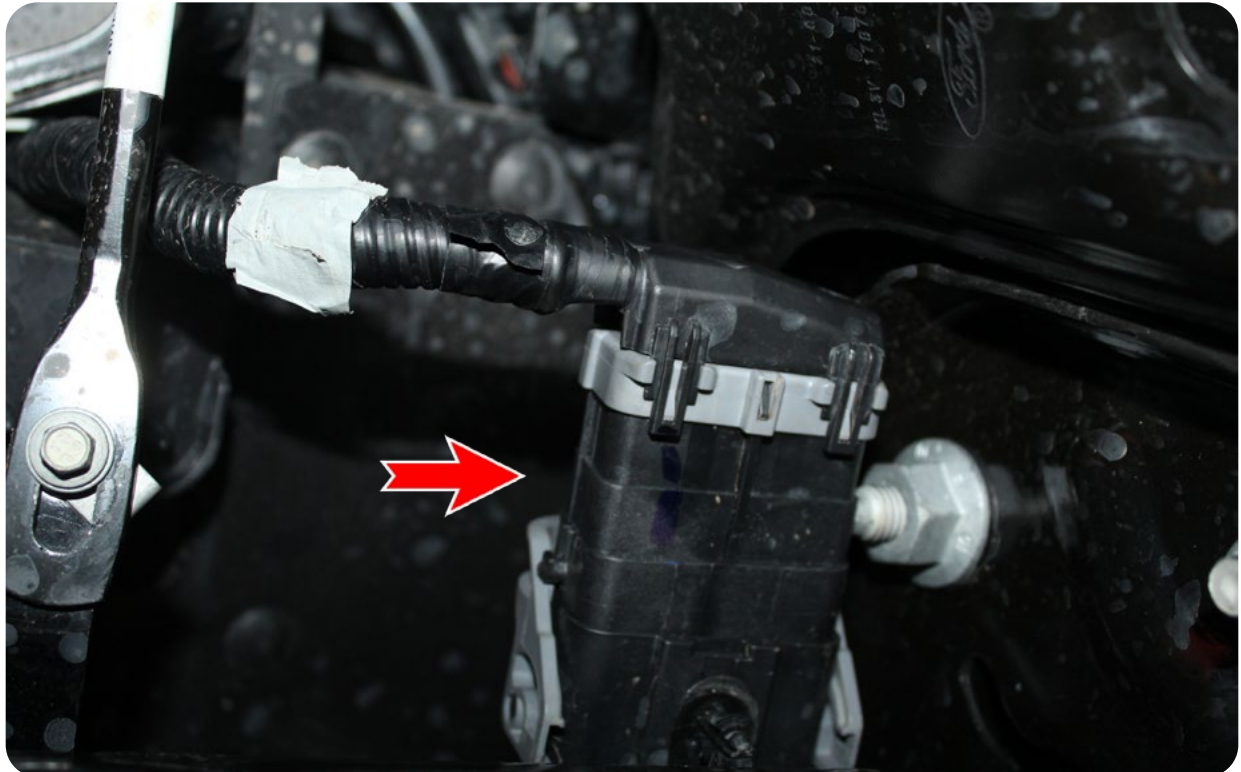
## PHANTOM FRONT BUMPER

22+/FORD RAPTOR

### □ STEP 4

Unplug the main wiring harness plug in located on the passenger side by pulling the gray tab back as shown below.

## REMOVAL



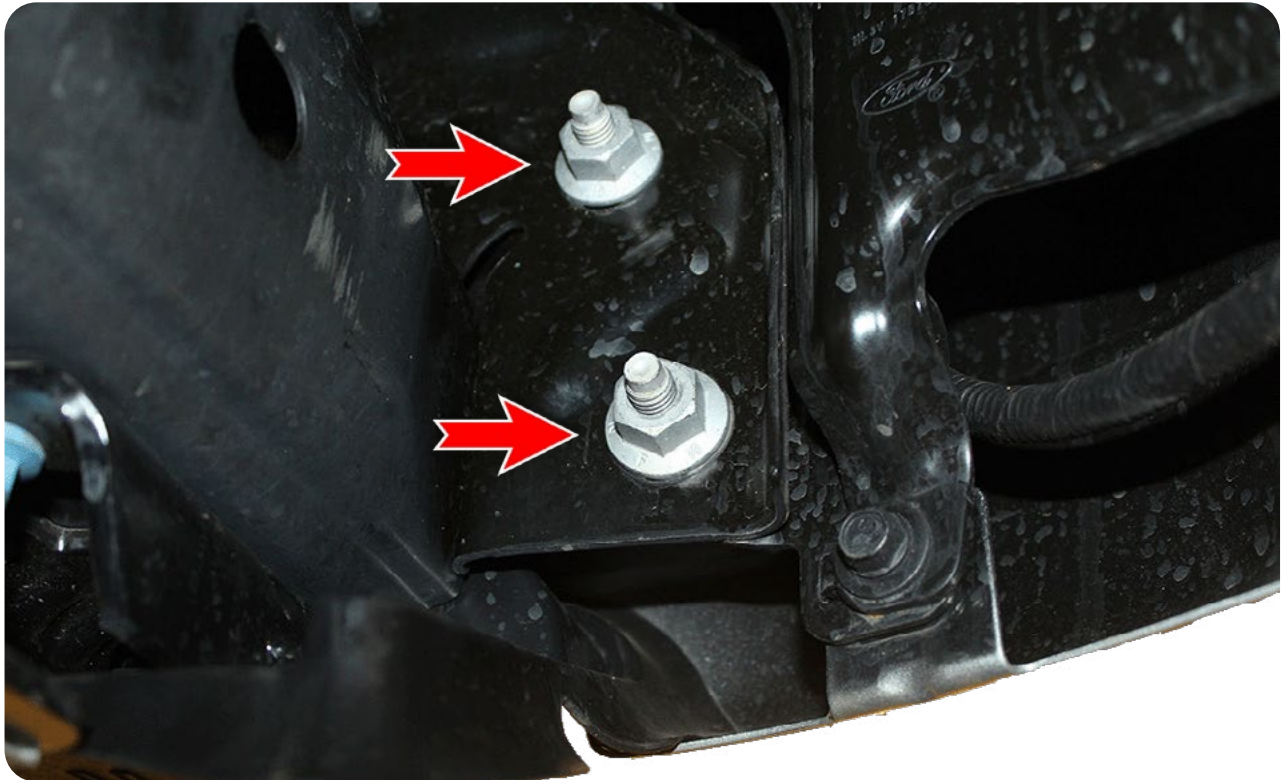
## PHANTOM FRONT BUMPER

22+/FORD RAPTOR

### ❑ STEP 5

Remove the mounting bolts located on the frame horn using a (21mm Socket). (Repeat on other side)

## REMOVAL



## PHANTOM FRONT BUMPER

22+/FORD RAPTOR

### □ STEP 6

Remove the inter cooler guard bolts by using a (10mm socket) and remove the shutter motor from the guard. Zip tie the shutter motor to the wiring harness once it is installed on your ADD bumper.

## REMOVAL



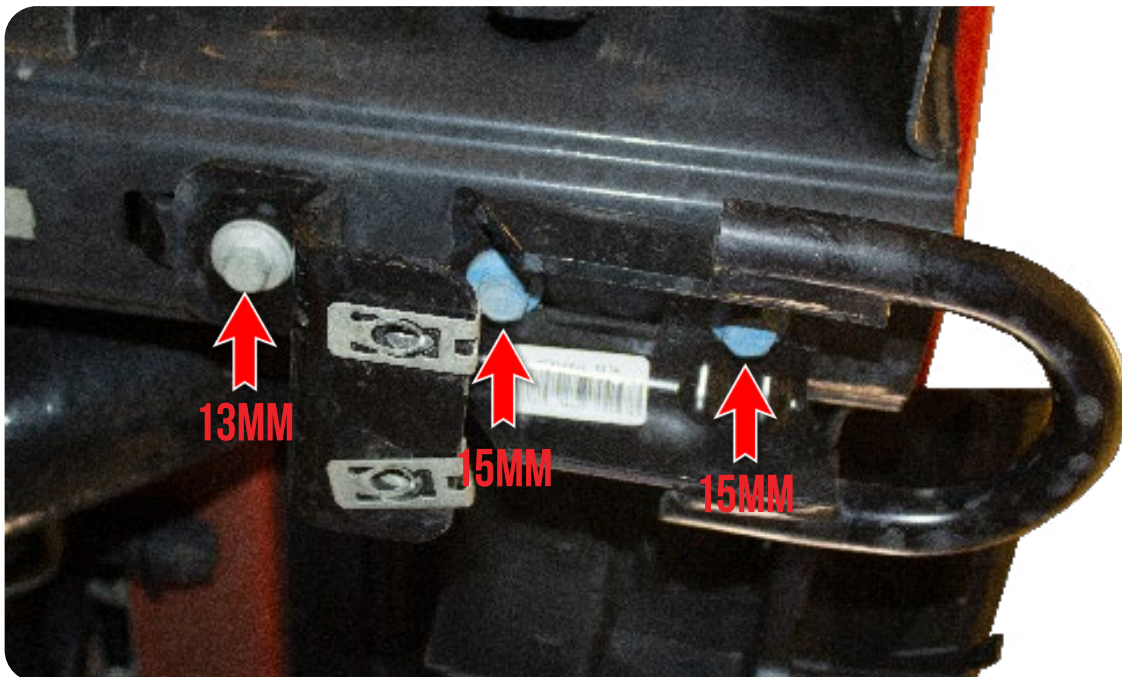
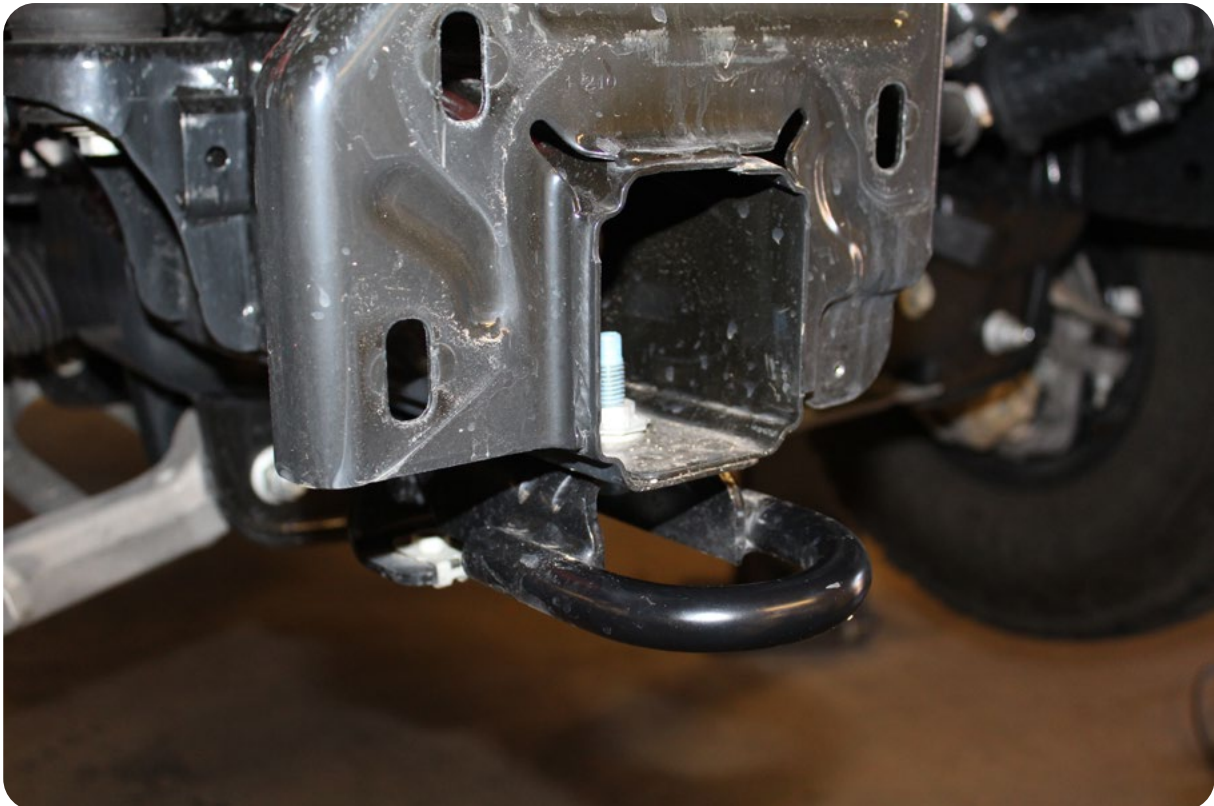
## PHANTOM FRONT BUMPER

22+/FORD RAPTOR

### ☐ STEP 7

Remove the tow hooks and the skid plate mount by using a (15mm socket) and a (13mm socket).

## REMOVAL





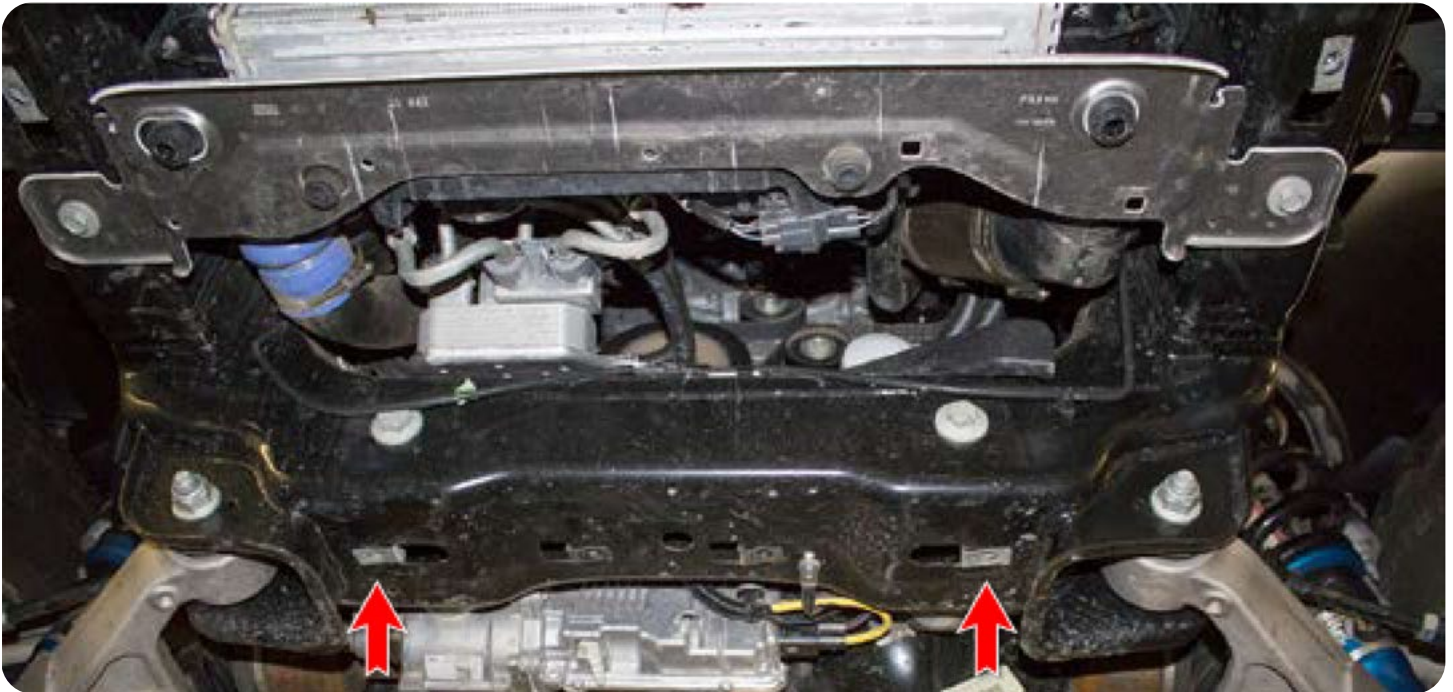
## PHANTOM FRONT BUMPER

22+/FORD RAPTOR

### □ STEP 8

Remove the OEM nut clips for the skid plate bottom mounts and replace with the provided 3/8" nut clips.

## REMOVAL



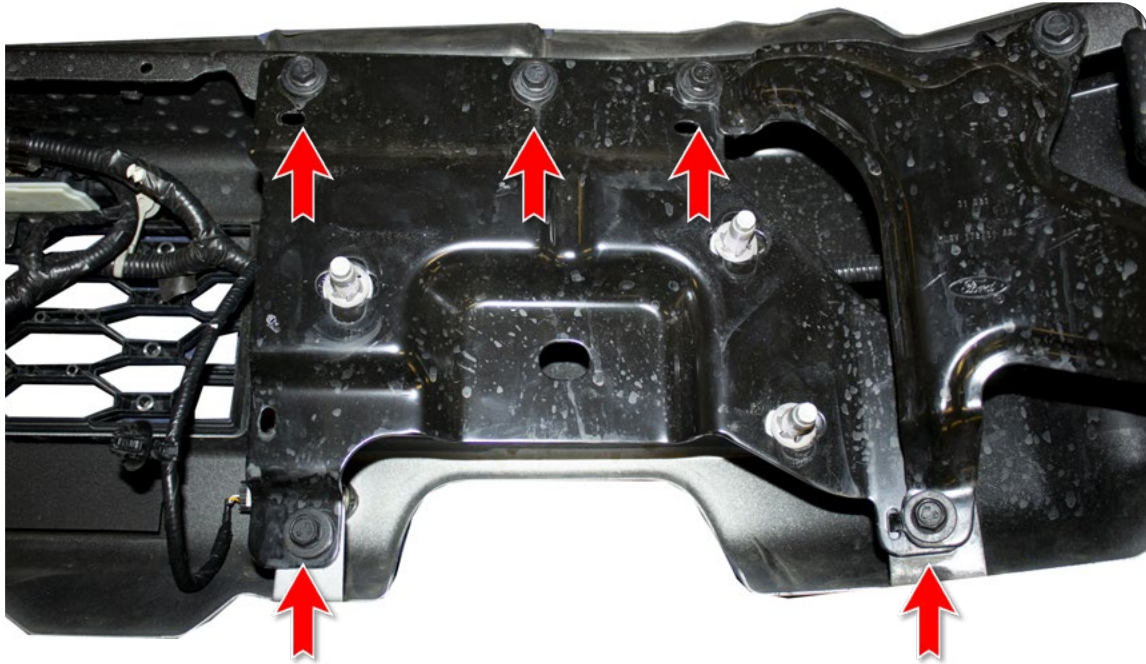
## PHANTOM FRONT BUMPER

22+/**FORD RAPTOR**

### □ STEP 9

Using a (10mm socket), remove the covers to expose the wire harness.

## REMOVAL





# INSTALLATION **GUIDE**

PHANTOM FRONT BUMPER

22+/FORD RAPTOR

## REMOVAL



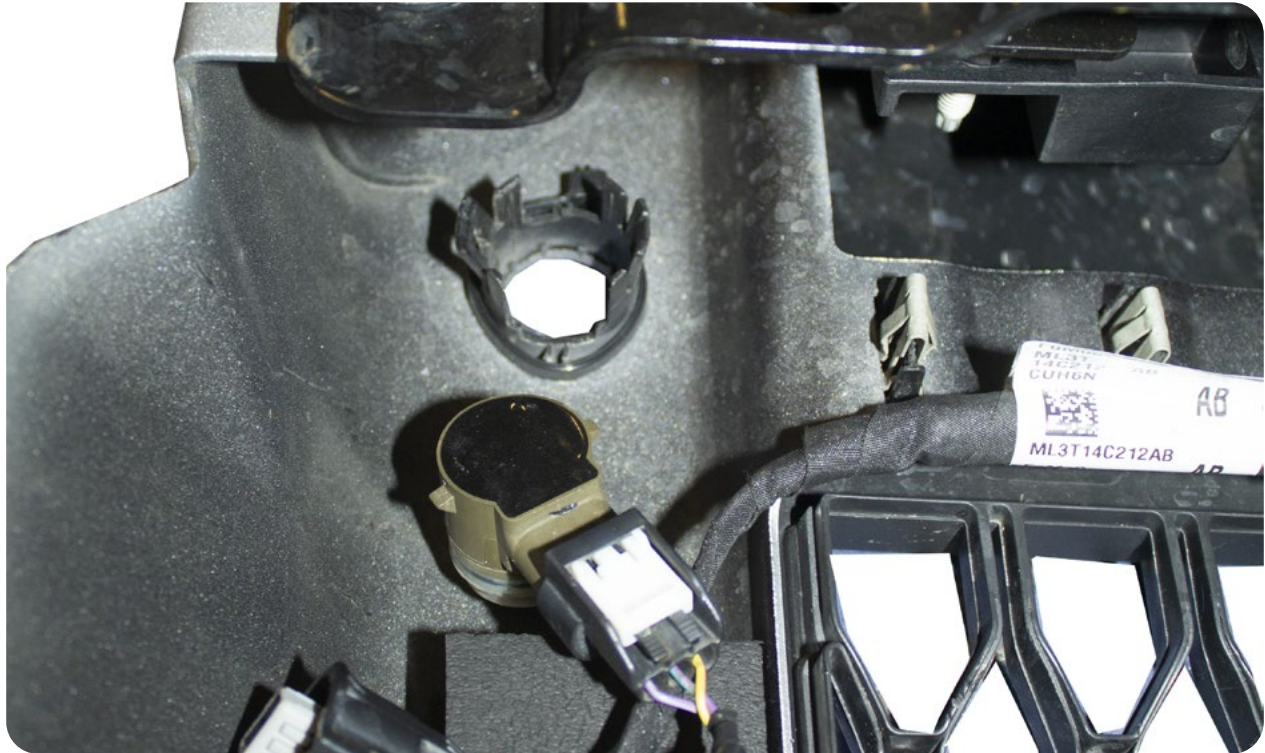
## PHANTOM FRONT BUMPER

22+/**FORD RAPTOR**

### STEP 10

Remove all four parking sensors and bezels from the stock bumper and remove wire harness.

## REMOVAL



Spread these two tabs to release the sensor from its mounting ring.



## PHANTOM FRONT BUMPER

22+/FORD RAPTOR

### □ STEP 11

Install the parking sensor mounts using the 1/4" button head bolts, washers, and nylon lock nuts using a (5/32 allen) and (7/16 wrench). (Repeat on other side)



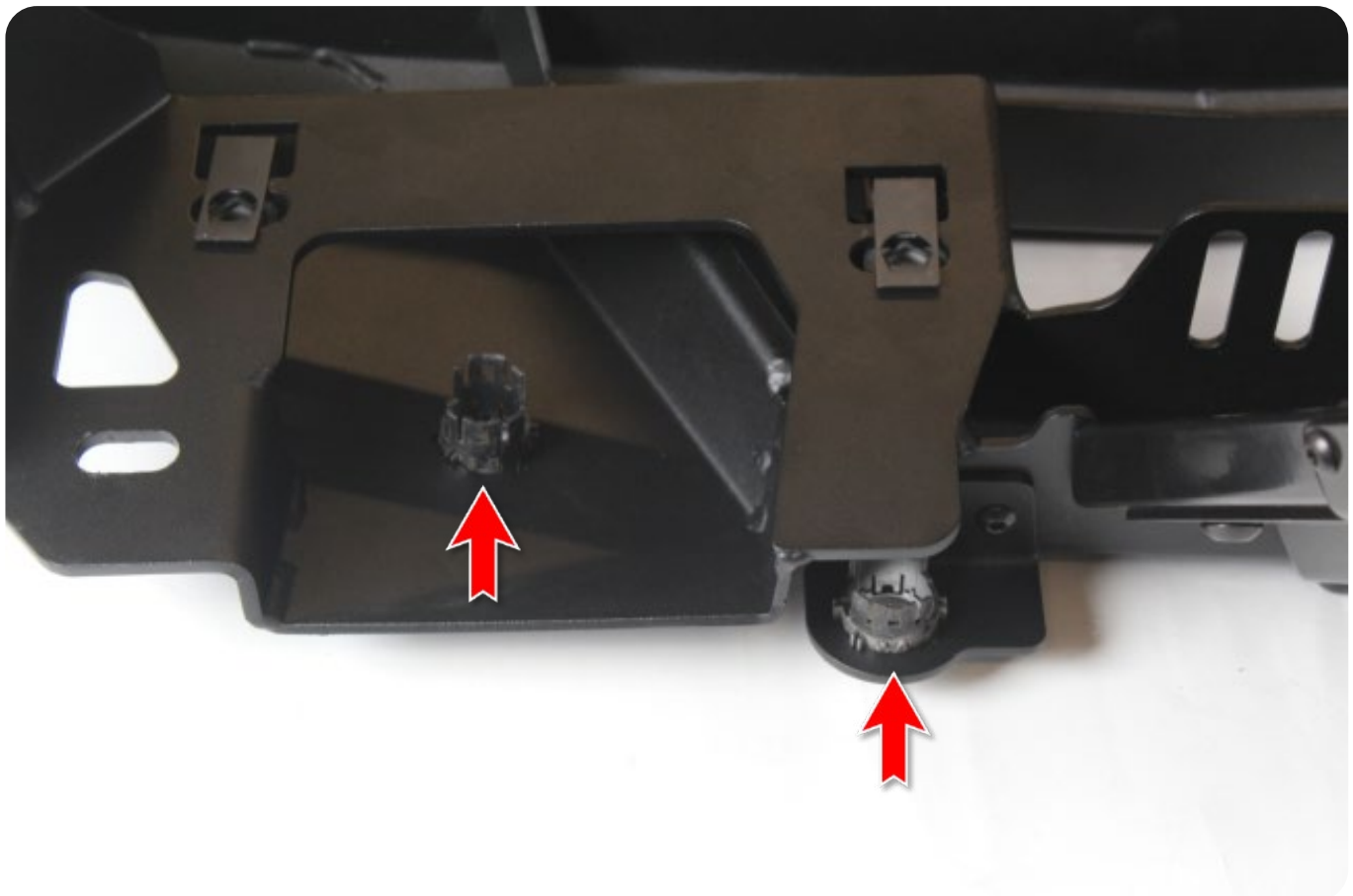
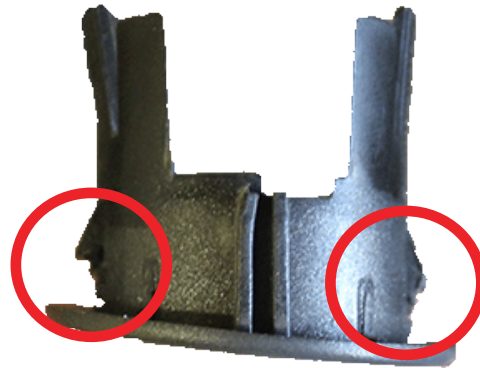
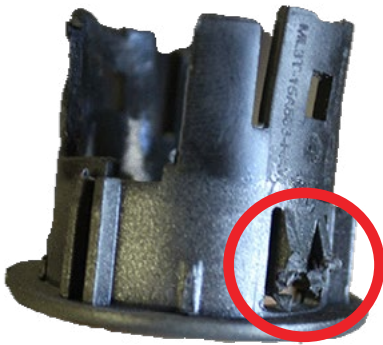
## PHANTOM FRONT BUMPER

22+/FORD RAPTOR

### STEP 12

Install the sensor bezels into the ADD bumper. **\*\*If the bezels do not click into place you may have to trim the tabs to match the thickness of the bumper as shown below\*\***

## INSTALLATION



## PHANTOM FRONT BUMPER

22+/FORD RAPTOR

### STEP 13

Install the light mount brackets using the provided 1/4" button head bolts, washers, and nylon lock nuts using (5/32 allen wrench) and a (7/16 wrench). (Repeat on other side)

## INSTALLATION

OUTSIDE

INSIDE

SHORT



LONG



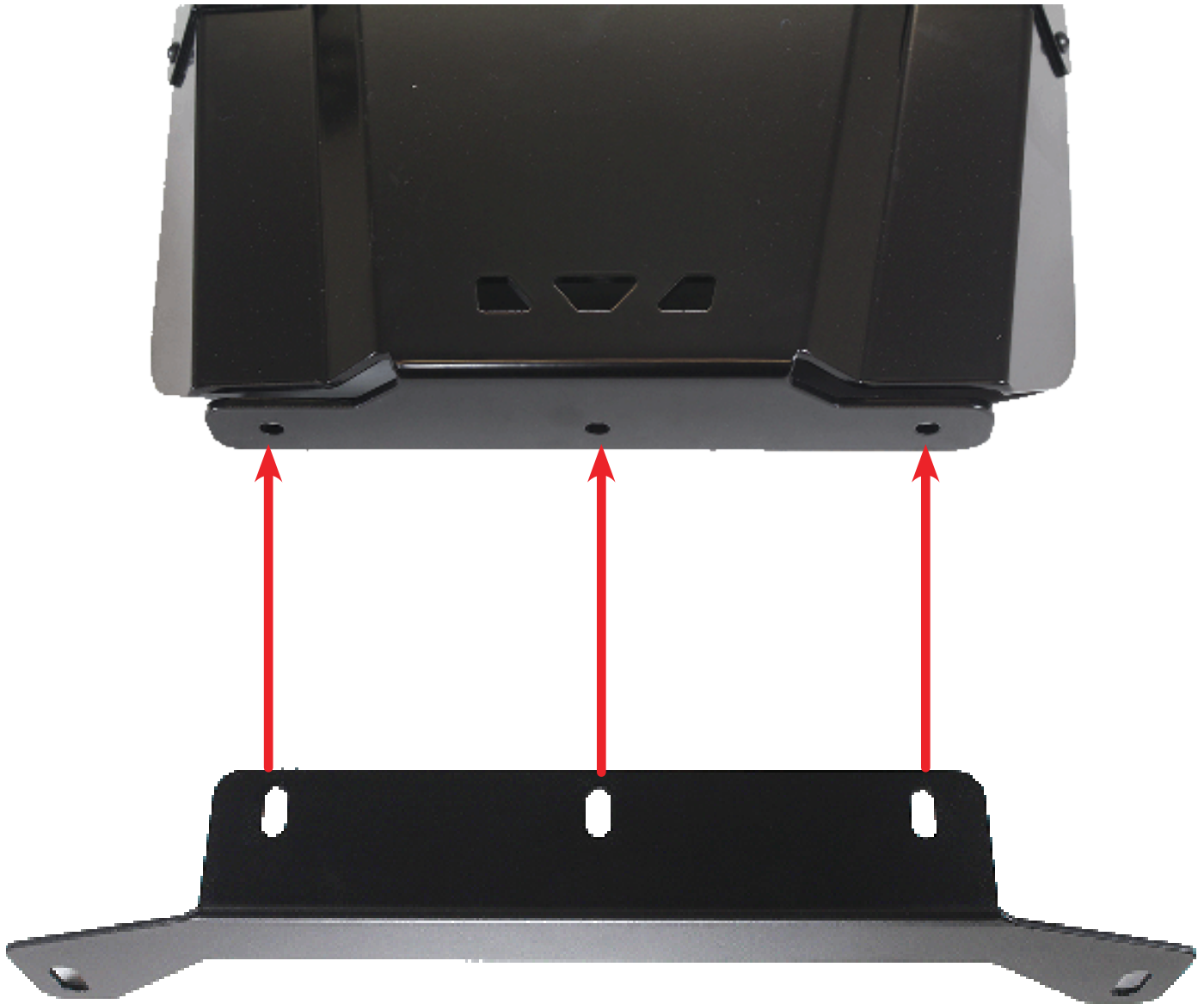
## PHANTOM FRONT BUMPER

22+/FORD RAPTOR

### □ STEP 14

Assemble the skid plate bottom mount to the skid plate using the provided 3/8" button head bolts, washers, nylon lock nuts with a (7/32 allen wrench) and (9/16 wrench).

## INSTALLATION







# INSTALLATION GUIDE

PHANTOM FRONT BUMPER  
22+/FORD RAPTOR

## INSTALLATION



## PHANTOM FRONT BUMPER

22+/**FORD RAPTOR**

### STEP 15

Install the skid plate to the bumper with the provided 3/8" button head bolts, washers, and nylon lock nuts using a (7/32 allen wrench) and (9/16 wrench).

## INSTALLATION





# INSTALLATION GUIDE

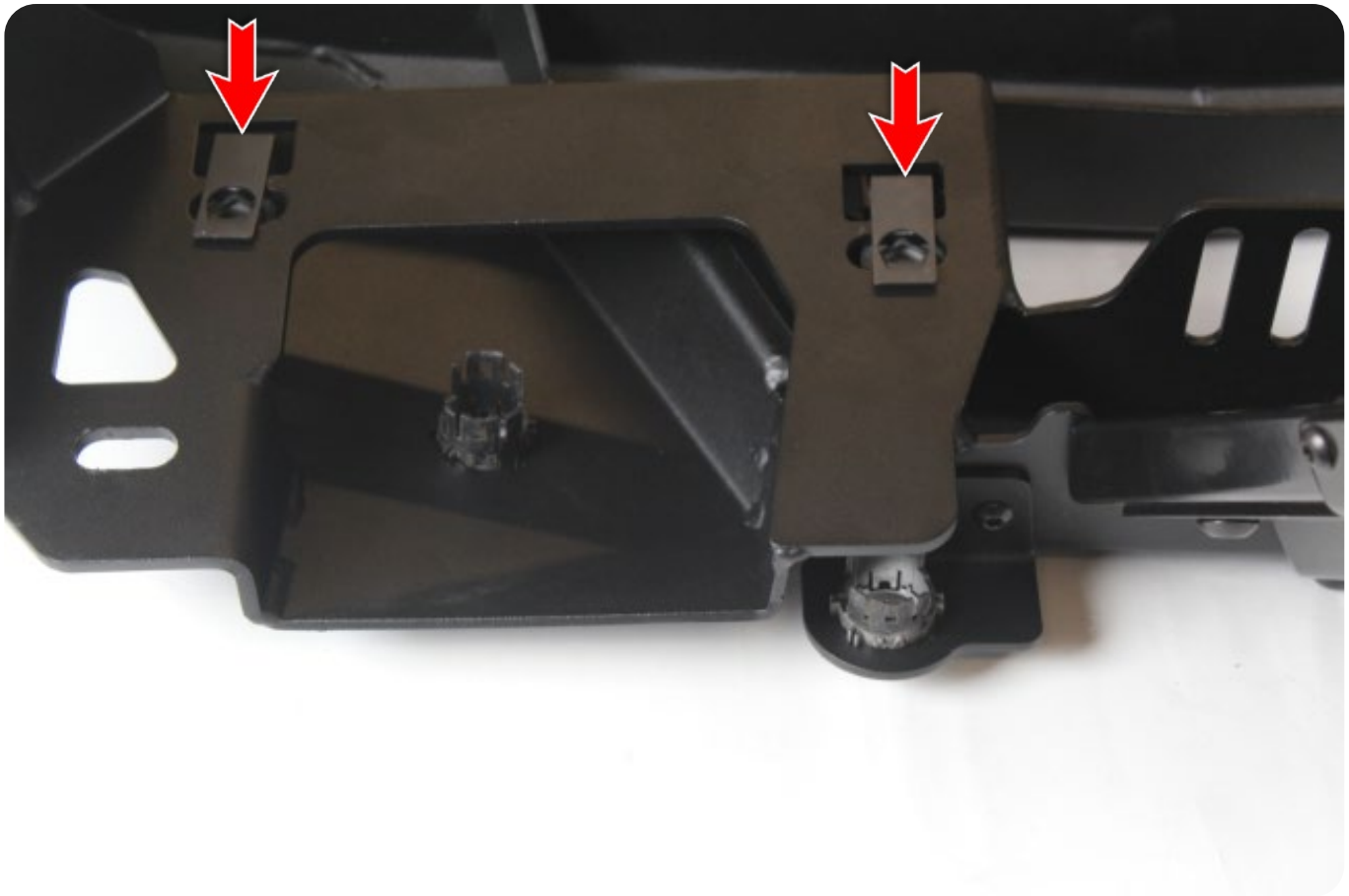
## PHANTOM FRONT BUMPER

22+/FORD RAPTOR

### □ STEP 16

Install the provided 3/8" nut clips in the slots on the bumper. (Repeat on other side)

## INSTALLATION



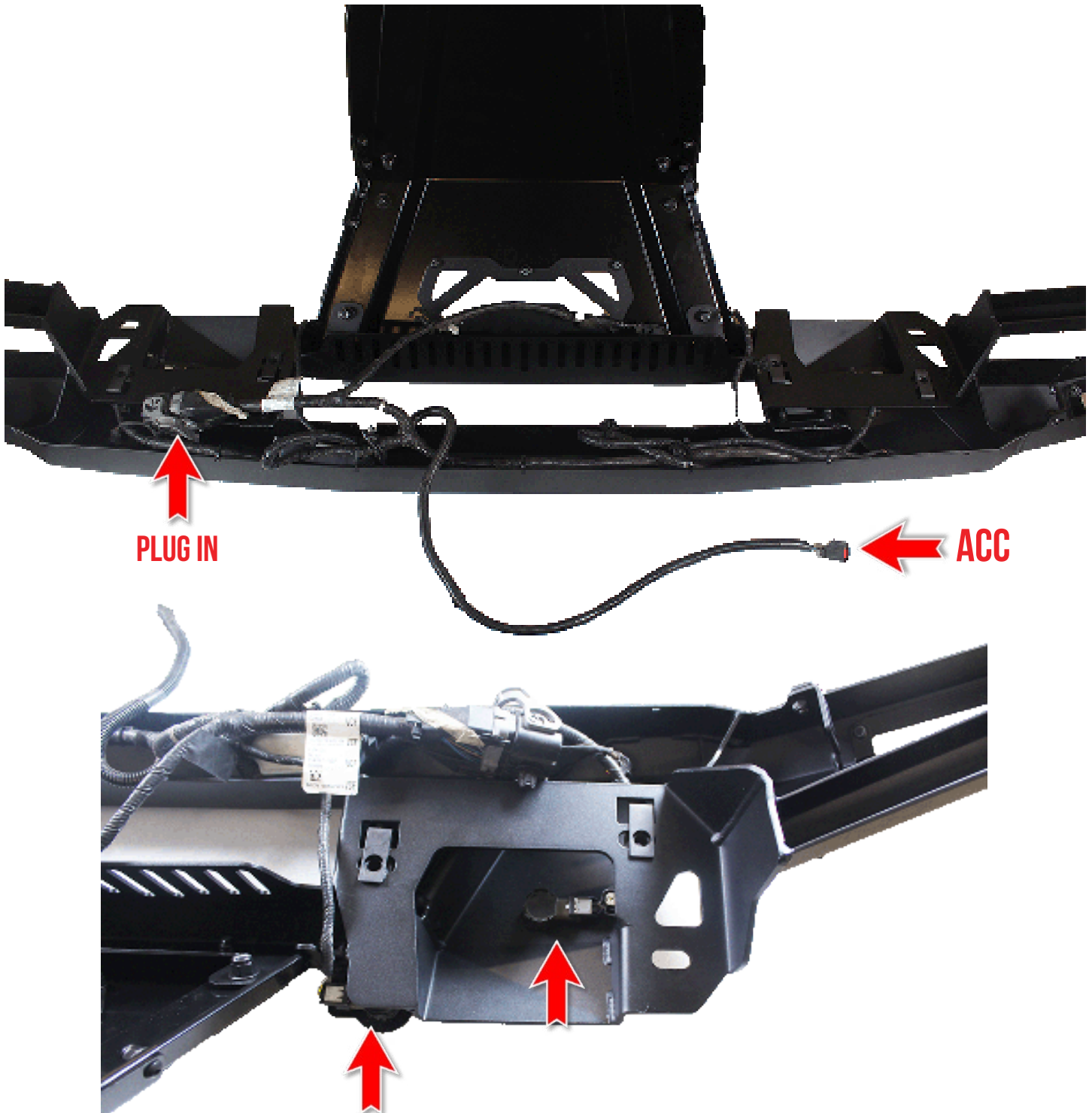
## PHANTOM FRONT BUMPER

22+/FORD RAPTOR

### □ STEP 17

Install the wire harness with the plug in on the passenger side. **\*\*Ensure parking sensors are in the orientation provide in the picture below\*\***

## INSTALLATION



## PHANTOM FRONT BUMPER

22+/FORD RAPTOR

### □ STEP 18

You can now install your Phantom front bumper with the provided 1/2" button head bolts, washers, and nylon lock nuts using a (5/16 allen wrench) and (3/4 wrench). **\*\*Ensure the skid plate is installed underneath the rock guard as shown below\*\***

## INSTALLATION



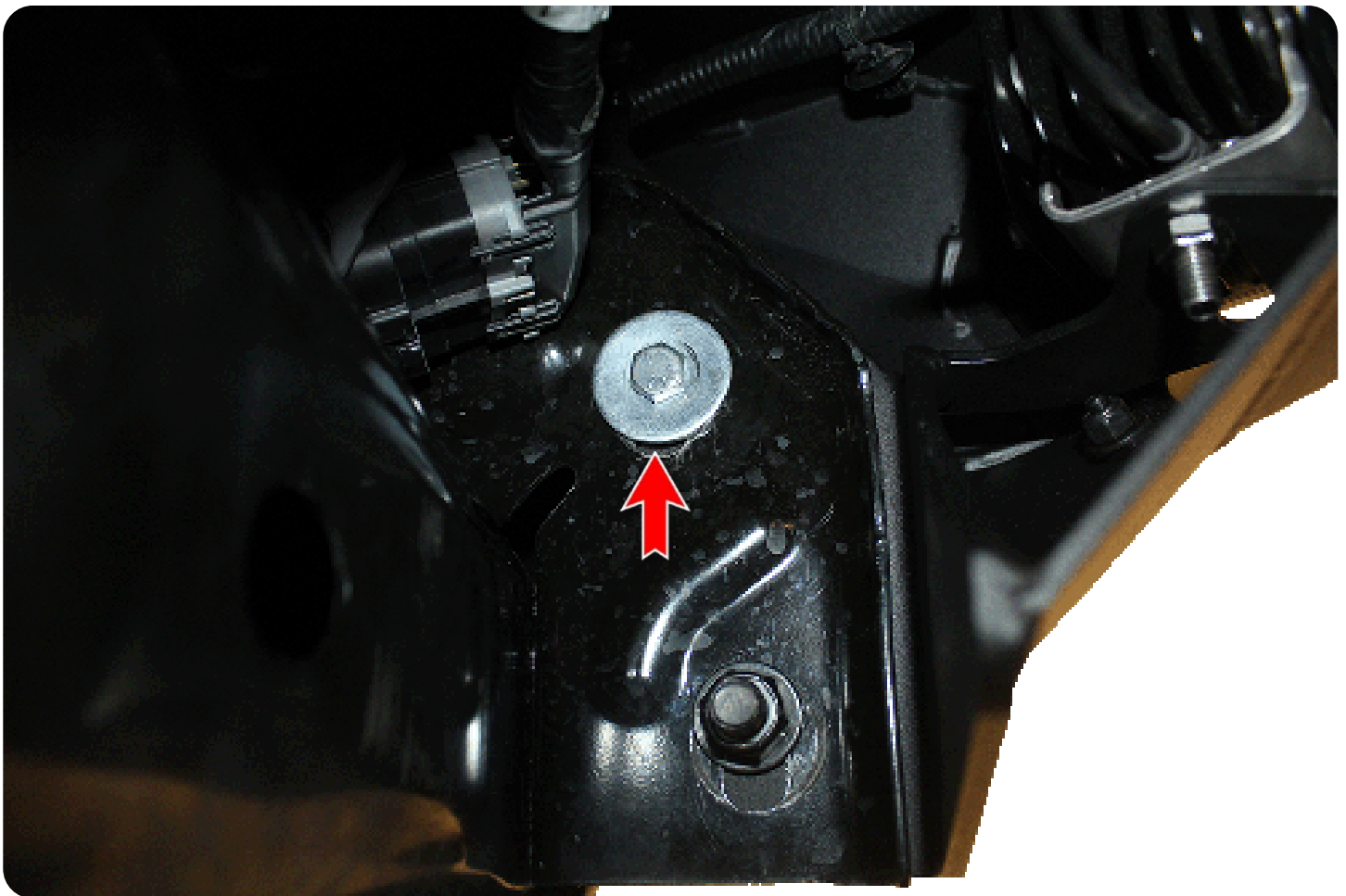
## PHANTOM FRONT BUMPER

22+/FORD RAPTOR

### □ STEP 19

Install the provided 3/8" hex head bolts, washers, and nylon lock nuts using a (9/16 socket).

## INSTALLATION



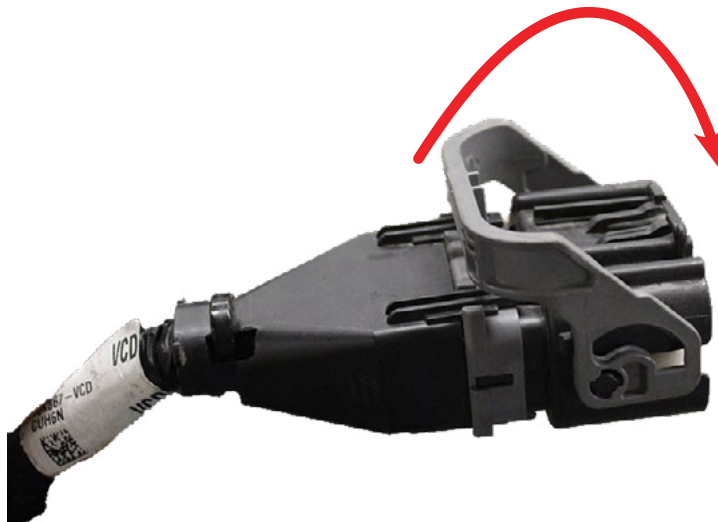
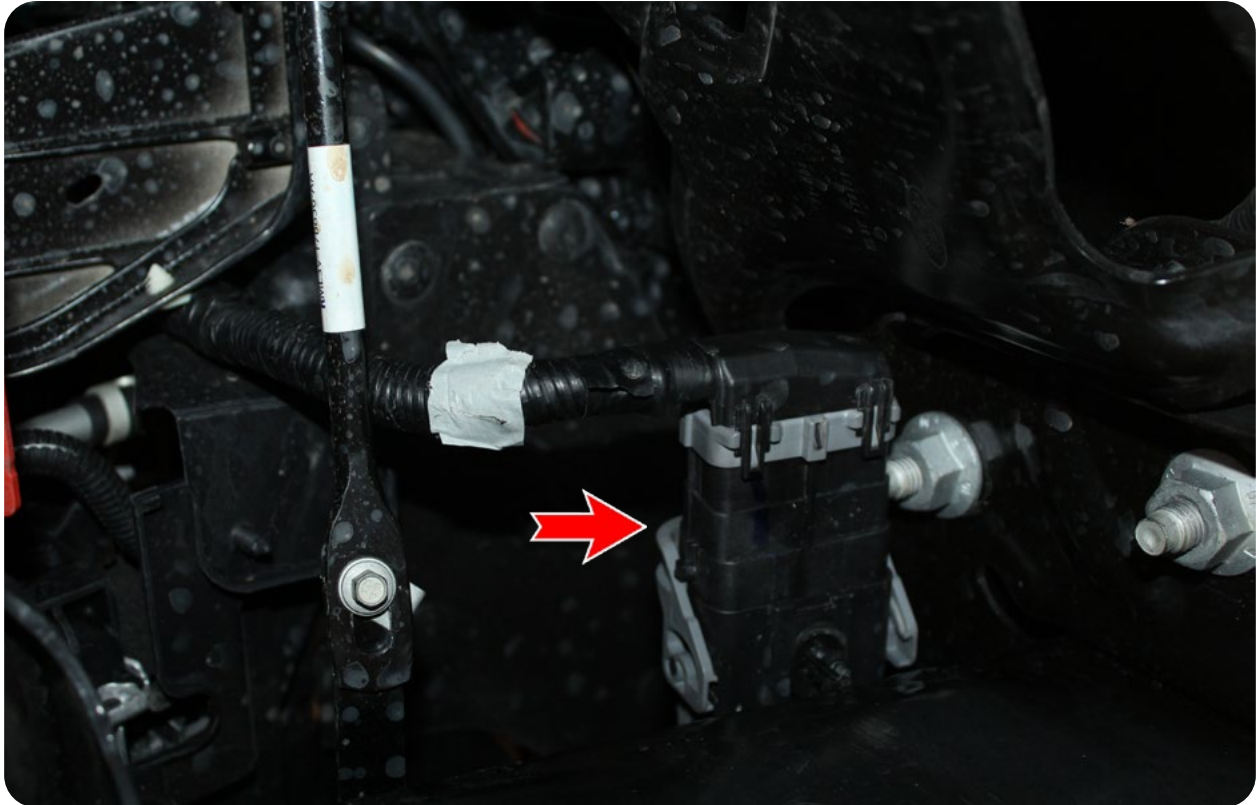
## PHANTOM FRONT BUMPER

22+/FORD RAPTOR

### □ STEP 20

Plug in the wire harness. **\*\*Ensure the clip is fully pushed down when plugged in as shown below\*\***

## INSTALLATION





# INSTALLATION GUIDE

## PHANTOM FRONT BUMPER

22+/FORD RAPTOR

## FINAL

### STEP 21

Stand back and enjoy your new ADD Phantom™ Front Bumper.

Check and re-tighten, if needed, all mounting bolts after 100 miles and periodically thereafter.



THIS PRODUCT IS PROTECTED BY ONE OR MORE U.S. PATENTS  
[WWW.ADDICTIVEDESERTDESIGNS.COM/PATENTS](http://WWW.ADDICTIVEDESERTDESIGNS.COM/PATENTS)

FOR ADDITIONAL SUPPORT OR TECHNICAL QUESTIONS,  
PLEASE CALL 480-671-0820 OR  
EMAIL [INFO@ADDICTIVEDESERTDESIGNS.COM](mailto:INFO@ADDICTIVEDESERTDESIGNS.COM)