

tavo™



nuna®

Designed
around your life



IMPORTANT!
KEEP THESE
INSTRUCTIONS FOR
FUTURE REFERENCE:
READ CAREFULLY

Contents

Product Information

Product Registration	4
Warranty	4
Contact	4

Child Usage Requirements

4

Warnings

5

Parts List

8

Product Set Up

10

Product Use

16

Accessory

24

Cleaning and Maintenance

26

Product Information

Model Number: _____

Manufactured in (date): _____

Product Registration

Please fill in the above information. The model number and the manufactured in date are located on a label on the stroller frame. Fill out the prepaid registration postcard attached to the product and mail it today.

To register your product please visit:

www.nunababy.com

Click on the “Register Gear” link on the homepage.

Warranty

We have purposely designed our high-quality products so that they can grow with both your child and your family. Because we stand by our product, our gear is covered by a custom warranty per product, starting from the day it was purchased. Please have the proof of purchase, model number and manufactured in date available when you contact us.

For warranty information please visit:

www.nunababy.com/warranty

Contact

For replacement parts, service, or additional warranty questions, please contact our customer service department.

In the USA: infousa@nunababy.com | www.nunababy.com | 1.855.NUNA.USA

Child Usage Requirements

This stroller is suitable for use with children who meet the following requirements:

Weight: up to 50 lb (22.7 kg) maximum

Height: 45 inches (114.3 cm)

⚠️WARNING

Failure to follow these warnings and instructions could result in serious injury or death.

A child’s safety is your responsibility. **NEVER** leave your child unattended.

To avoid any danger of suffocation, remove all plastic covers before using the stroller and destroy or keep away from babies and children!

Keep small parts away from children as they pose a choking hazard.

Discontinue using this stroller if it becomes damaged or broken.

Use original Nuna parts and accessories only.

Use of this stroller with a child weighing more than 50 lb (22.7 kg) or 45 inches (114.3 cm) in height will cause excessive wear, and stress on the stroller, and could create an unstable condition.

Use the stroller with only one child at a time.

This stroller has been designed to use from birth. We recommend using the lowest reclined position for newborn babies.

To prevent a hazardous, unstable condition, do not place more than 10 lb (4.5 kg) in the storage basket before use.

Negotiate curbs and rough ground carefully. Repeated impact could cause damage to this stroller.

This stroller is to be used only at walking speed and is not intended for use while jogging, skating, etc.

The parking brake **MUST** be engaged when the stroller is stopped and when placing and removing child.

Overloading, incorrect folding, and using accessories other than those approved by Nuna, e.g. child seats, bag hooks, rain covers, buggy boards, etc., may damage or make this stroller unsafe.

Adding accessories such as purses, shopping bags, or parcels to the handle or canopy can cause the stroller to be unstable.

This stroller does not replace a crib or a bed. Should your child need to sleep, they should be placed in a crib or approved sleeping area based on your child's requirements.

Avoid serious injury from falling or sliding out. **ALWAYS** use seat belt. After fastening buckles, adjust belts to get a snug fit around your child.

Child may slip into leg openings and strangle. **NEVER** use in reclined carriage position unless the calf support is raised to cover the front opening and the fabric flaps are snapped to the side of the stroller seat.

AVOID FINGER ENTRAPMENT Use care when folding and unfolding the stroller. Be certain the stroller is fully erected and latched before allowing your child near the stroller.

STRANGULATION HAZARD Do not place items with a string around your child's neck, suspend strings from the stroller, or attach strings to toys.

ALWAYS keep your child in view while in this stroller.

ALWAYS check that the car seat attachment devices are correctly engaged before use.

DO NOT let your child play with this stroller.

DO NOT place any item on the canopy of this stroller.

DO NOT leave this stroller exposed in the vicinity of a strong source of heat i.e. a radiator or open fire or store this stroller in a damp place.

DO NOT make any changes or modifications to this stroller, that are not specified in this manual.

DO NOT use storage basket as a child carrier.

NEVER use the stroller on stairs or escalators. You may suddenly lose control of the stroller or your child may fall out.

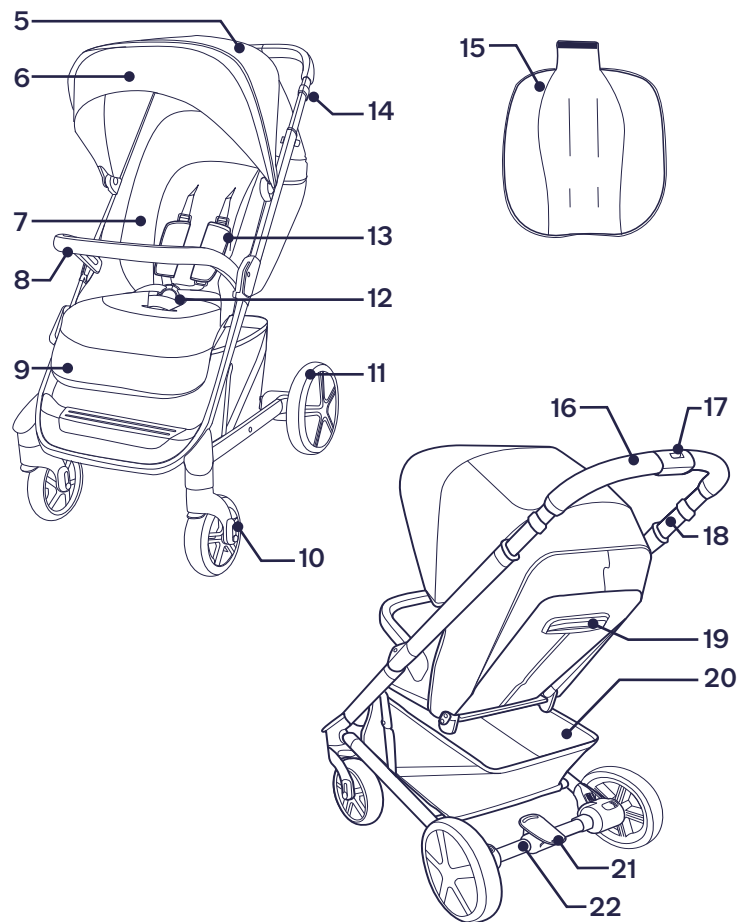
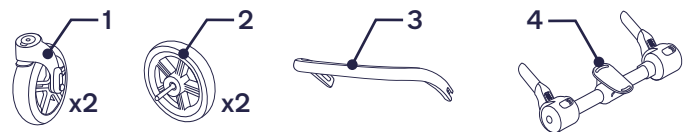
NEVER allow your child to stand on the footrest.

Parts List

Make sure all parts are available before assembly.
If any part is missing, please contact Nuna (see page 4 for information). No tools are required for assembly.

⚠ CHOKING HAZARD: Remove and immediately discard protective end caps from each wheel and wheel hub axle.

- | | |
|--------------------|------------------------------|
| 1 Front Wheel (x2) | 13 Shoulder Harness Pads |
| 2 Rear Wheel (x2) | 14 Handle Adjustment Button |
| 3 Arm bar | 15 Insert |
| 4 Brake Assembly | 16 Handle |
| 5 Canopy | 17 Folding Button |
| 6 Canopy Visor | 18 Infant Carrier Lock |
| 7 Seat Pad | 19 Recline Adjustment Button |
| 8 Arm Bar | 20 Storage Basket |
| 9 Calf Support | 21 Brake Lever |
| 10 Front Wheel | 22 Brake Assembly |
| 11 Rear Wheel | |
| 12 Buckle | |



Product Set Up

Open Stroller

- 1** - Open the storage latch as shown.
- 2** - Rotate the handle to the rear of the stroller. A “click” sound means the stroller frame is open completely.
Check that the stroller is completely latched open before continuing.

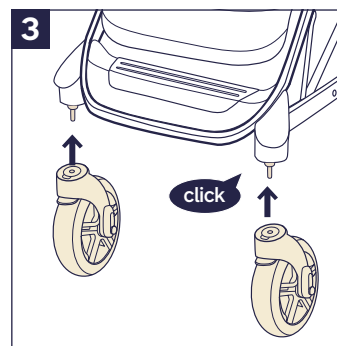
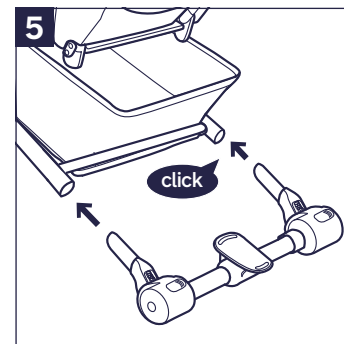
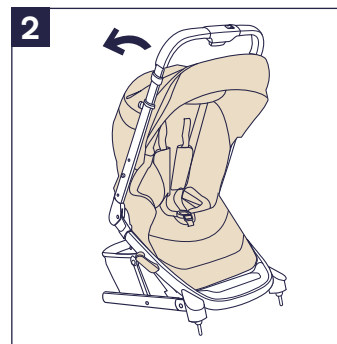
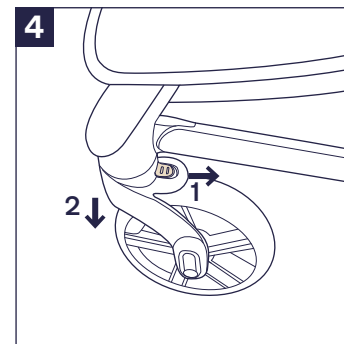
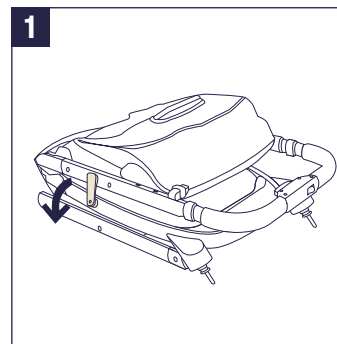
Front Wheels

- 3** - Insert the front wheel into the front leg. A “click” sound means the wheel is assembled completely.
Check the wheel is securely attached by pulling out.
Repeat on opposite side.
- 4** - To remove the front wheel, slide the release button out (1) and then detach the front wheel from the front leg (2).

Brake Assembly

Make sure the brake lever is up before attaching the brake assembly to the frame.

- 5** - Push the brake assembly onto the rear leg tubes. A “click” sound means the brake assembly is attached.
Check that brake assembly is securely attached by pulling on it.



Rear Wheels

- 1** - Insert the rear wheel into the rear leg. A “click” sound means the rear wheel is assembled completely. Repeat on opposite side.

Check that the wheels are securely attached by pulling on them.

- 2** - To remove the rear wheel, press the release button (1) and detach the rear wheel from the rear leg (2).

Storage Basket

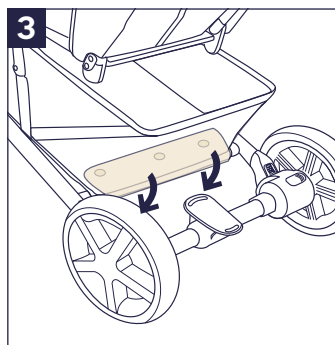
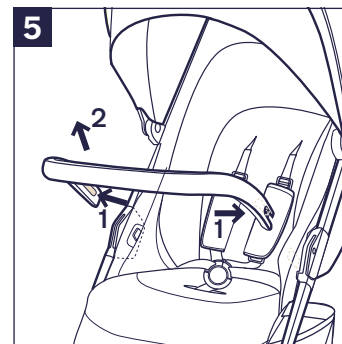
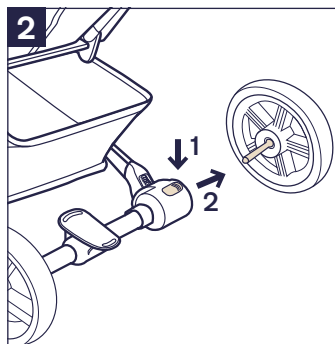
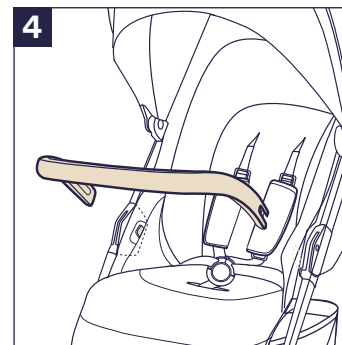
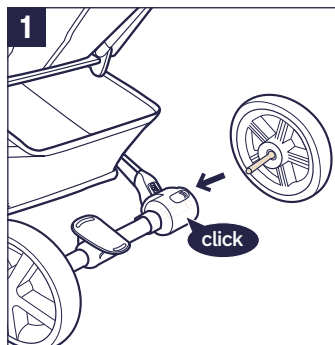
- 3** - Wrap the basket flap around the rear frame and fasten the 3 snaps.

Arm Bar

- ⚠** Always secure the child with the harness. The arm bar is not a restraint device.

- 4** - Align the arm bar ends with the arm bar mounts, and insert until it clicks into place. A “click” sound means the arm bar is assembled completely.

- 5** - To remove the arm bar, press the arm bar release buttons (1), and lift the arm bar up. (2)

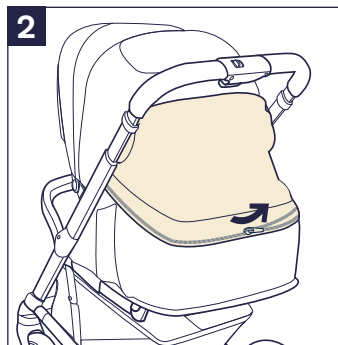
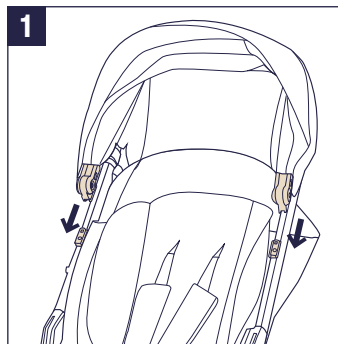


Canopy

- 1 - Slide the canopy mounts onto the stroller.
- 2 - Then zip the canopy fabric to the back of the stroller seat.

Check **Set Up**

- ☐ Stroller frame is latched open
- ☐ Rear and front wheels securely attached
- ☐ Canopy mount attached to stroller frame and canopy zipped to seat pad
- ☐ Basket securely attached
- ☐ Arm bar securely attached
- ☐ Canopy securely attached



Product Use

Securing Your Child

- 1 - Push the center button on the buckle to release the buckle latch, remove the clips and place your child in the stroller.
- 2 - Connect the shoulder buckle and hip buckle.
- 3 - Secure the shoulder buckle and hip buckle to the buckle latch and repeat on the opposite side.
- 4 - Fit the harness snugly to your child by sliding the upper adjustment straps to tighten (1). Then slide the waist adjustment straps (2).

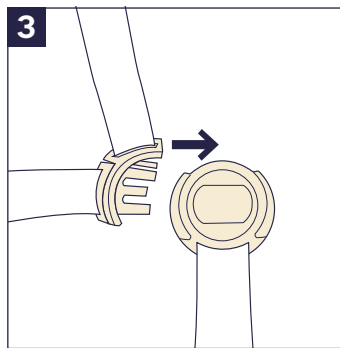
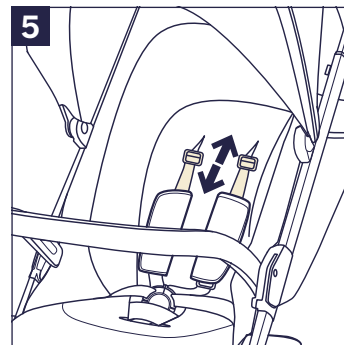
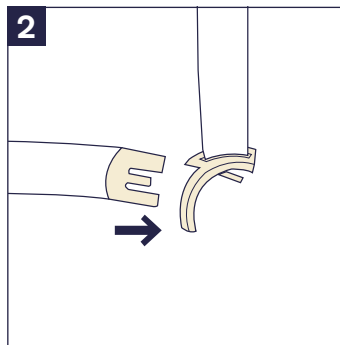
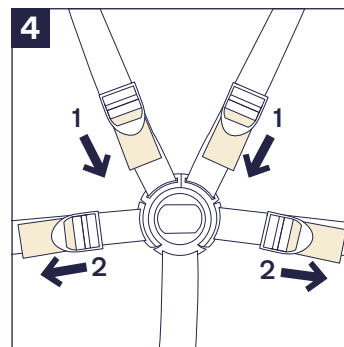
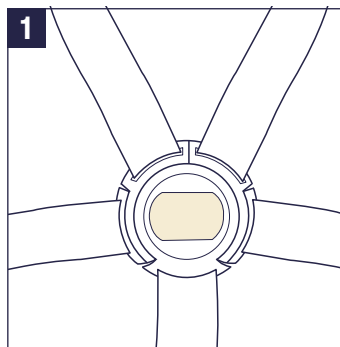
Shoulder Harness Position

- 5 - The upper shoulder harness buckles can be moved up and down for added adjustment.

⚠ To avoid serious injury from falling or sliding out, always secure your child with harness.

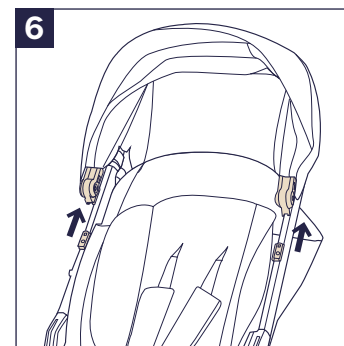
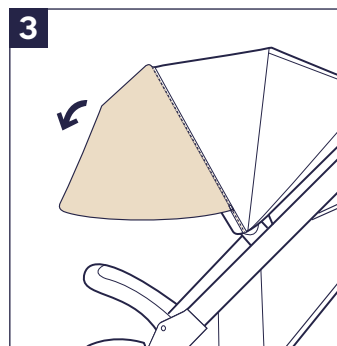
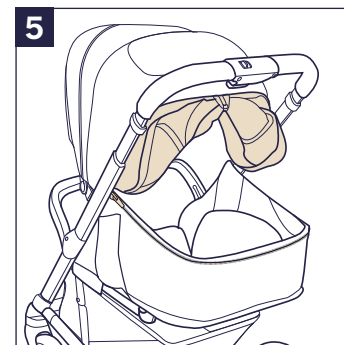
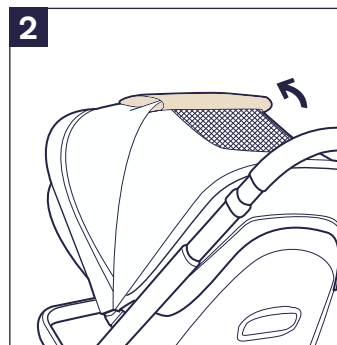
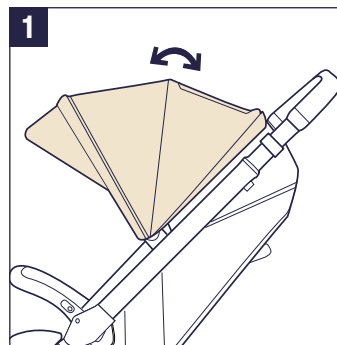
Make sure your child is snugly secured. The space between the child and the shoulder harness should be about the thickness of one hand.

DO NOT cross the shoulder belts. This will cause pressure on child's neck.



Canopy

- 1** - To open the canopy, pull the canopy toward the front of the seat, and to close the canopy, push it back.
- 2** - For added ventilation, flip the canopy window cover up.
- 3** - For extra shade, unzip the front zipper and pull the canopy drape down.
- 4** - For added air flow, unzip the top zipper to expose the mesh. Roll the fabric flap up and secure using the webbing.
- 5** - To access the child from the back of the stroller, unzip the bottom zipper. Roll the fabric flap up and secure using the webbing.
- 6** - To remove the canopy, unzip both zippers in the back and then slide the canopy mounts up.



Recline

There are 4 recline positions.

- 1 - To recline the backrest, squeeze the backrest adjustment handle and pull the backrest down.
To raise the recline, push up.

⚠ Make sure the recline is adjusted properly for use.

Calf Support

The calf support has 3 positions.

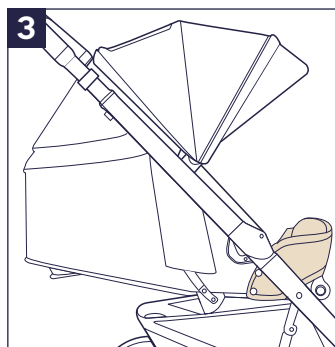
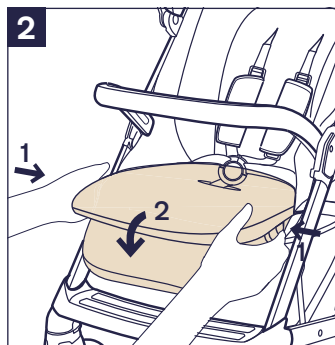
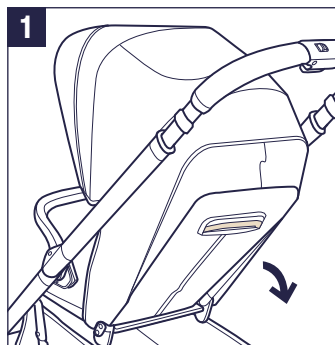
- 2 - To raise the calf support, lift up. To lower the calf support, press the adjustment button in the middle of the calf support **(1)**, and push down **(2)**.

- 3 - When the recline is flat, the calf support must be in the vertical position. Pull the fabric out from under the calf support and attach it to the stroller using the 4 snaps.

⚠ Child may slip into leg openings and strangle. Never use in the reclined position unless the extra flap is pulled out from under the calf support, snapped into place and is secure.

DO NOT use enclosure with an older child that can lift up on hands and knees or crawl out.

Remove the arm bar when the calf support is in the vertical position and the extra flap is snapped into place.



Front Swivel Locks

It is recommended to use the front swivel locks on uneven surfaces.

- 1** - Pull the front swivel lock up to lock the front wheel forward facing.
- 2** - Push the front swivel lock down to unlock.

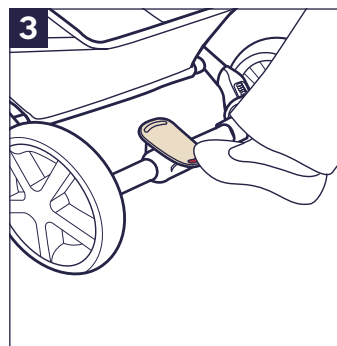
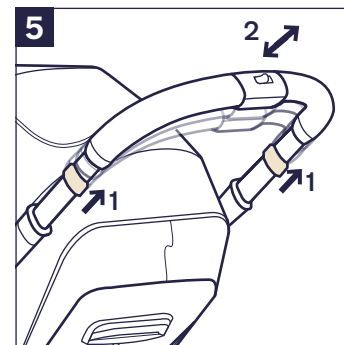
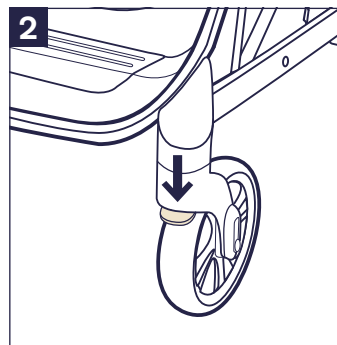
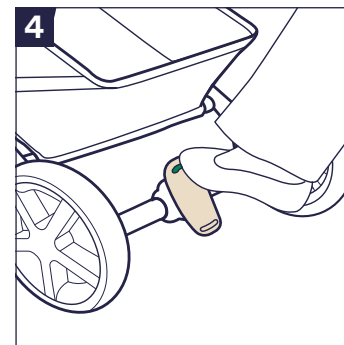
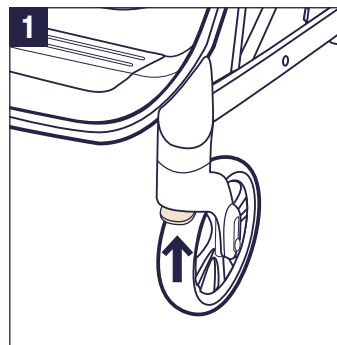
Brake

- 3** - To lock the rear wheels, step down on the red area on the brake lever.
 - 4** - To unlock the rear wheels, step down on the green area on the brake lever.
- ⚠** Always apply the brake when the stroller is stopped. Push the stroller slightly to ensure the brake is engaged.

Handle

The handle has 4 positions.

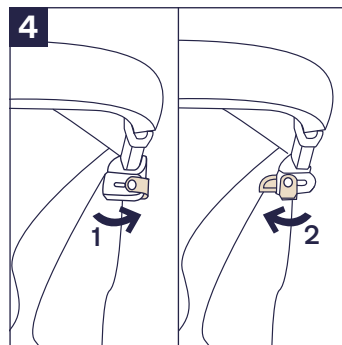
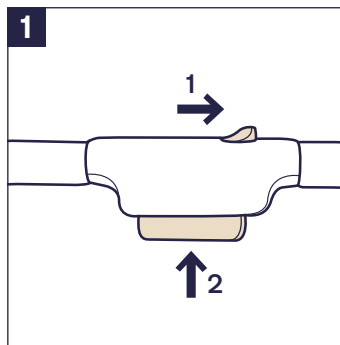
- 5** - To adjust the height of the handle, pull the handle adjustment buttons up **(1)** and then pull the handle up or down **(2)**.



Fold

Before folding, push the canopy to the rear of the stroller.

- 1 - To engage the folding buttons, slide the top folding button (1) and then squeeze the bottom folding button (2).
- 2 - While the folding buttons are engaged, rotate the handle forward.
- 3 - Rotate and attach the fold lock.



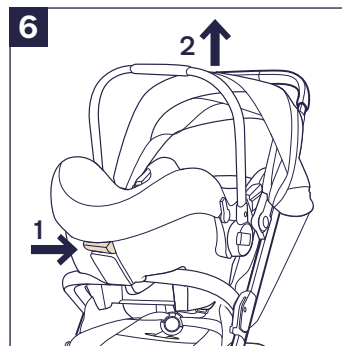
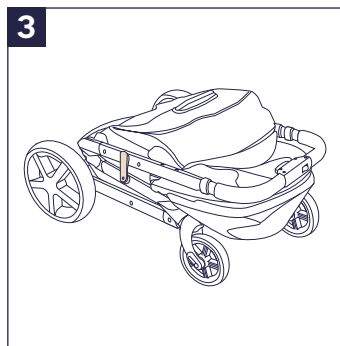
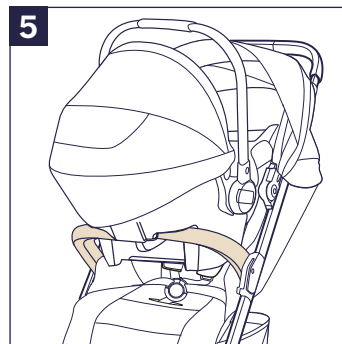
Accessory

⚠ Not all accessories are included on some models.

Nuna PIPA series

For infant carrier assembly and usage, please refer to the infant carrier instruction manual.

- ⚠** Recline the stroller seat to the lowest position, push the canopy to the rear of the stroller and attach the arm bar.
- 4 - To open the infant carrier lock, slide the latch out (1). To close the infant carrier lock, slide the latch in (2).
- 5 - Open the infant carrier lock and place the infant carrier on the stroller so it sits over the arm bar. Then close the infant carrier lock.
- ⚠** Pull up on the infant carrier to check that it is fully locked to the stroller.
Remove the infant carrier before folding.
- 6 - To remove the infant carrier, open the infant carrier lock, squeeze the stroller release handle (1) and lift the infant carrier up (2).



Cleaning and Maintenance

Clean the frame, plastic parts, and fabric with a damp cloth, but do not use abrasives or bleach. Do not use silicon lubricants as they will attract dirt and grime. Do not store your stroller in a damp place.

Clean the stroller wheels regularly with water and remove any dirt.

To ensure long-lasting use, wipe off this product with a soft, absorbent cloth after using it in rainy weather.

Refer to the care label attached to the fabric for washing and drying instructions.

It is normal for fabric to color from sunlight and to show wear and tear after a long period of use, even when used normally.

For reasons of safety, only use original Nuna parts.

Check regularly if everything functions properly. If any parts are torn, broken, or missing, stop using this product.

Nuna Baby Essentials, Inc. Nuna and all associated logos are trademarks.

