

USER MANUAL

FLEXODYNAMIC

N  e a r <sup>®</sup>

360

# HOW TO INSERT AND REMOVE THE N-ear 360

The N-ear 360 is made to wear in the ear. The micro-speaker and ear tip sit balanced in the ear canal while allowing full situational balance to external sounds.

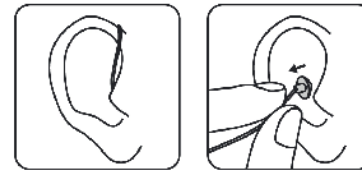
Loop the bend over the ear and gently insert or remove ear tip piece into the ear canal.

Gently insert the ear tip onto the speaker that's at the end of the line. Please note the the ear tip will snap firmly into place

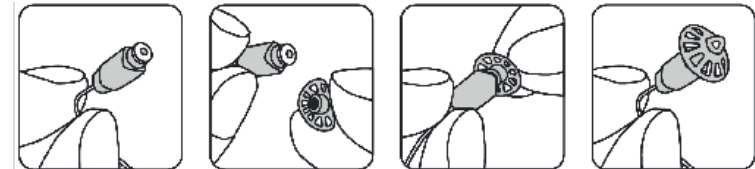
## Fitting the N-ear 360



## Removing the N-ear 360



## Replacing ear tip on a N-ear 360



## Available Ear tips



Open



Round

## CARE AND MAINTENANCE

Adhering to these guidelines will ensure you and your N-ear 360 have a long and happy relationship:

- Always store the N-ear 360 in it's protective case
- Always turn down the device volume before plugging your N-ear 360 in
- Wipe down N-ear 360 after each use
- Don't expose your N-ear 360 to temperature extremes or heavy impact
- In case of earwax build-up in the sound bore or the driver tube, replace the filter using the Earwax replacement tool. Incorrect fitting using other tools may result in damage and will void the warranty
- Moisture in the N-ear can cause temporary performance issues. Dry your ears completely before inserting the N-ear 360. If water or perspiration gets inside the N-ear 360 causing it to stop working correctly, allow it to dry out before further use. Extended exposure to moisture or submersion will result in permanent damage (not covered by the warranty)

## NOTE

At N-ear we are committed to make the best Audio and protection for your hearing

Please observe the following:

- Once the N-ear 360 is inserted in your ear, start with a low volume and gradually increase it until a comfortable level is reached
- Do not turn up the volume so loud that you can't hear your surroundings
- Ringing in your ears, or any discomfort, can indicate that the level is too high for your ears. We recommend you drop the volume of the audio and take a break

# CARING FOR YOUR HEARING

## YOUR HEARING PROTECTION IS YOUR RESPONSIBILITY

If, after using the N-ear 360, you experience muffled hearing, ringing or buzzing, your ears are trying to give you a warning. These symptoms are usually associated with a hearing condition called "tempoary Threshold Shift".

And are an indication of conditions that could lead to permanent hearing loss.

There are established safety guidelines for sound levels versus exposure.

The following data is based on OSHA 's (Occupational Safety and Health Adminstration) exposure guidelines for industry. These guidelines are based on an avarage hearing sensitivity, so your hearing sensitivity mat be above or below the levels:

<b>Maximum Exposure Time:</b>	<b>8hr</b>	<b>4hr</b>	<b>2hr</b>	<b>1hr</b>	<b>30min</b>	<b>15min</b>	<b>7,5min</b>
<b>dB level:</b>	<b>85dB</b>	<b>88dB</b>	<b>91dB</b>	<b>94dB</b>	<b>97dB</b>	<b>100dB</b>	<b>103dB</b>

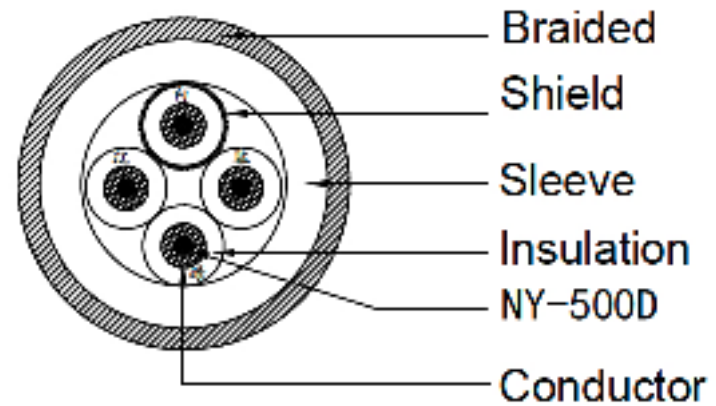
For more information please visit the OSHA website at [www.osha.gov](http://www.osha.gov)

# CABLE ON THE N-ear 360

## BRAIDED FIBER CABLE

Outer Diameter: 2.5mm  
Color: Black  
Pull strength: 400 N  
Outer material: Braided Fabric Nylon

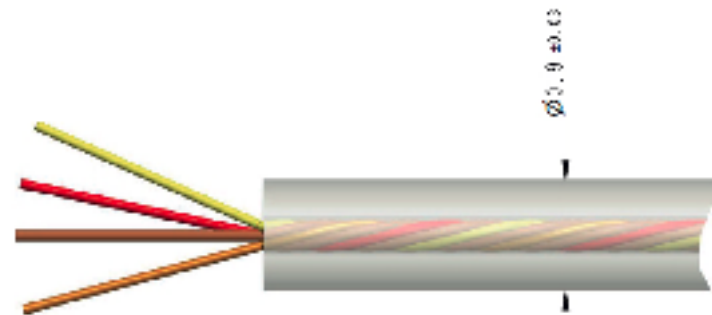
Tangle free and enhanced force



## CLEAR THIN CABLE:

Outer Diameter: 0,9mm  
Color: Transparent  
Pull strength: 55 N  
Outer material: Pebax UV stabilised

Entire cable meet REACH and RoHS



## ACOUSTIC TEST RESULTS

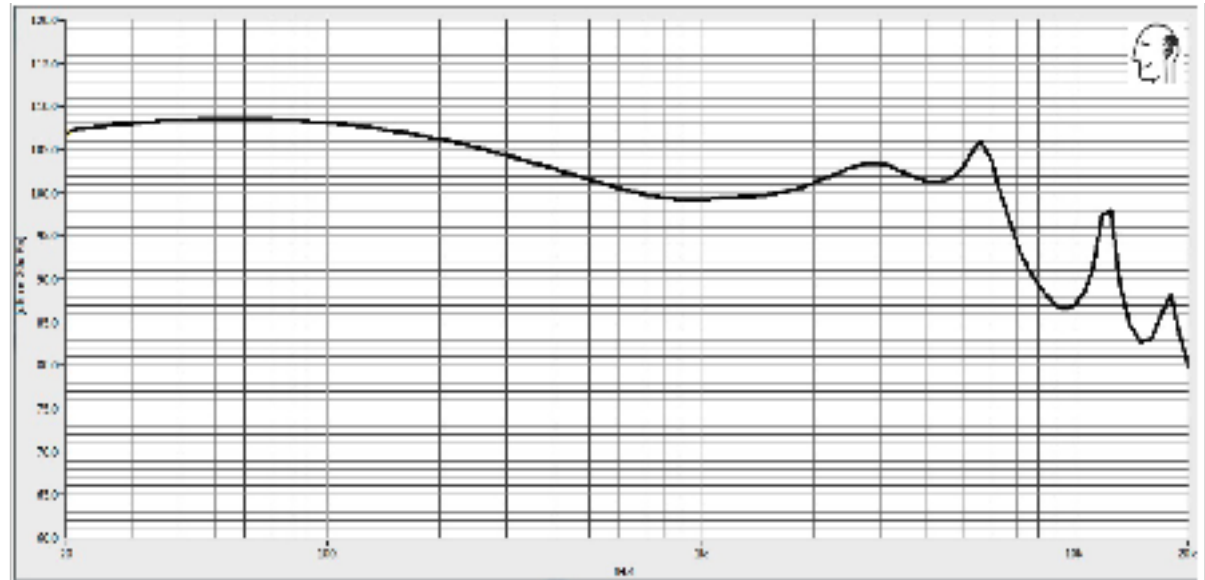
Measurements made by testing directly in IEC 603318-4 (711) coupler driven by 126mVrms source with 0 DC bias. (less than 1ohm.)

Sensitivity - The N-ear 360 will produce the SPL listed in the chart below under test conditions described in the chart.

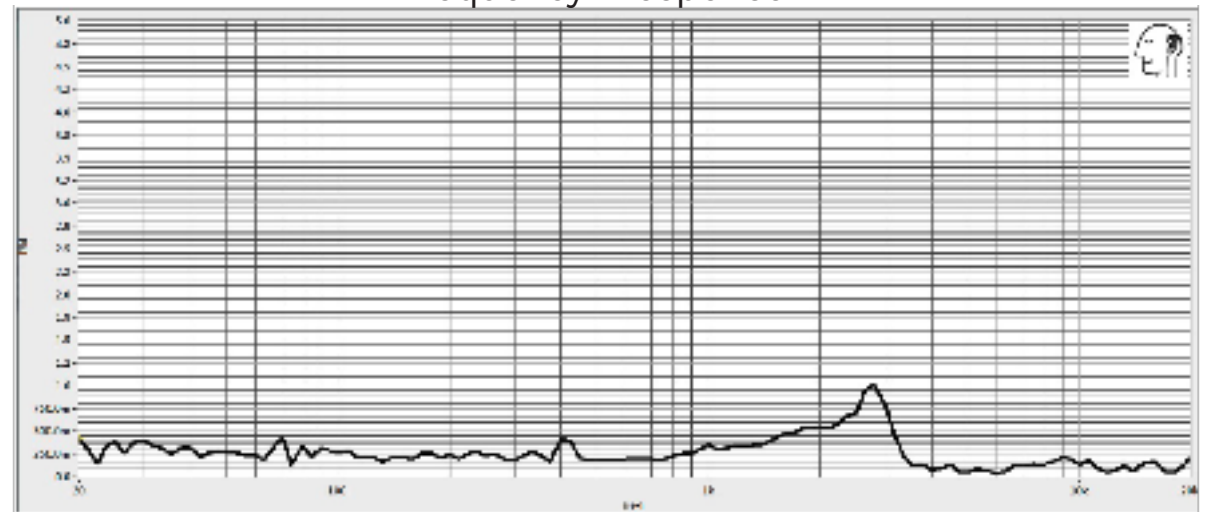
## ENVIRONMENTAL CONDITIONS

Operation: sensitivity will not vary more than +1 /-3dB from -20C to 70C

Storage: Do not exceed -40C to 63C



Frequency Response



THD

## WARRANTY

N-ear warrants that the N-ear 360 be free of defects in material or workmanship for a period of 1 year from the date of the original purchase. During the 1 year warranty period, if your product is found to be defective, N-ear will at its sole discretion either repair or replace the product with a new or factory reconditioned or subsequent equivalent model.

This limited warranty does not apply to any defects attributable to damage beyond the reasonable control of N-ear including, but not limited to damage caused by abuse, misuse, misapplication or modification performed by anyone other than N-ear.

Except where prohibited by applicable law, this warranty is non-transferable and is limited to the original purchaser. This warranty gives you specific legal rights and you may also have other rights that may vary under local laws.

For more support please visit [www.n-ear.com](http://www.n-ear.com) or mail [support@n-ear.com](mailto:support@n-ear.com)

WWW.N-EAR.COM

N  e ar<sup>®</sup>

360