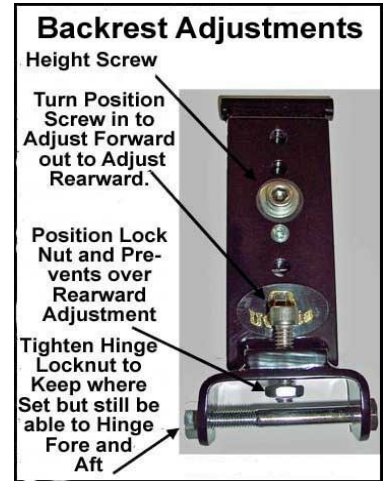


**Built-in Driver Backrest for *Voyager***



1995 and up with the diamond pattern.

1994 and older will have our standard stitch pattern to match the seats in those years.



A driver's backrest that becomes part of your seat. No bars in the way of the driver's hips and legs or passenger's legs. Folds forward to ease passenger getting on or off and adds to safety by getting out of the way in sudden stops. Includes up and down height adjustments, as well as driver seating position, back and forth, to help driver sit upright to avoid slouching, a big factor in driver fatigue.

Backrest is concaved and pivots at the top of bar as you lean against it so no uncomfortable edges dig into your back. Well padded with foam, but only 1 1/2" thick which takes up less seating room than most other driver backrests. Comes with a handy pouch and shoulder strap to enable conversion to a shoulder bag.

**INSTALLS IN MINUTES WITHOUT TAKING OFF SEAT COVER !**

Available for most motorcycle stock seats only and comes with stock stitching to match closely to your seat.

OPTIONS: Upper Bar Cover; For passenger who would feel more secure with padded bar.. Quick-Out Bar; Seldom needed, but available when frequent removal of backrest is desired.

1351 S. Cleveland Massillon Rd, Unit A, Copley, Ohio 44321 (888)-343-3320  
email: utopia@utpr.com website: www.utpr.com



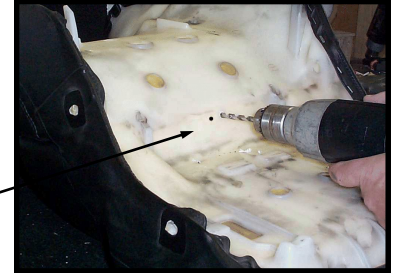
# Utopia Built-in Driver Backrest Installation For Voyager

Utopia Products, Inc.

**Installation** of Utopia's Built-in Driver Backrest. Follow these step by step directions, viewing procedures in these pictures. Shown here on GL1500, but procedure will be the same on Voyager. Actual pictures of Voyager included below, because seat



Step 1: Lay Bottom T-Bar in place, and mark holes onto seat base.



Step 2: Drill 9/32" Holes in Seat Base



Step 3: Measure from front of seat back 1 1/2". Feel for and measure foam, not loose seat cover. Mark and center side to side. Will be centered between the real thread on band between front and rear seat on Cavalcade (see Step 3 below).

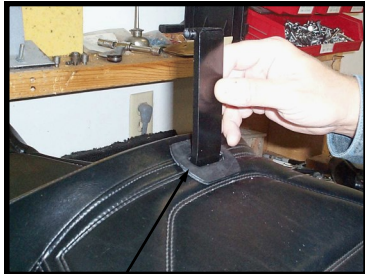


Step 4: Stick Boot in place centered over mark you just made on your seat.

Step 5: With a long serrated knife cut hole through Boot and Cover 1 1/2" wide into foam, clearing foam from area where you just drilled in step 2. Boot will keep you from cutting too wide.

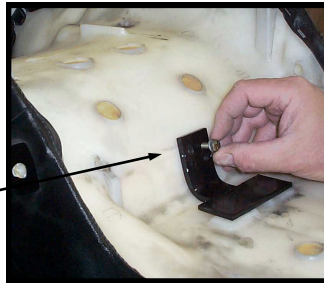


Slit will not tear more under normal use.



Step 6: Slide Inside Bar into slit, from top of seat, through Boot into foam.

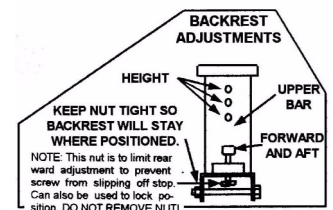
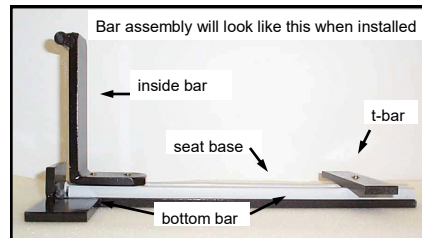
Step 7: Turn seat upside down. Push down on seat compressing foam and line up holes through T-Bar, seat base and inside bar. Insert bolts through lock washer, Bottom T-Bar, seat base and into Inside Bar threaded holes and tighten.



Step 8: Install bar attached to pad to tube now sticking out of seat. Slide in bolt furnished and tighten bolts. Make tight enough that backrest will stay in place, but will still hinge back and forth.

## Special Voyager Instructions Here

**NOTE:** Step 6) First insert small part of inside bar into seat (1) compressing foam till it hits bottom. Then flip upright (2).



Use original holes in seat base.



Knife



Boot sent to you in the backrest pouch, with installation instructions.

Step 4) Peel and Stick Boot before cutting. Shown without boot so you can see where to cut.

Step 1) Lay bottom T-Bar in center of seat base. Front extrusion will drop into raised area on front of seat base.

Step 3) Measure 1 1/2" back to make slit. Center side to side. Will be just in front of 2nd frenched seam (real thread).

Step 2) Drill this hole



Rear

Remove staples to slide bar inside seat, to line up on hole. Use a small pry bar or large screw driver, to unglue foam from seat base. Staple cover back in place after bars are installed.