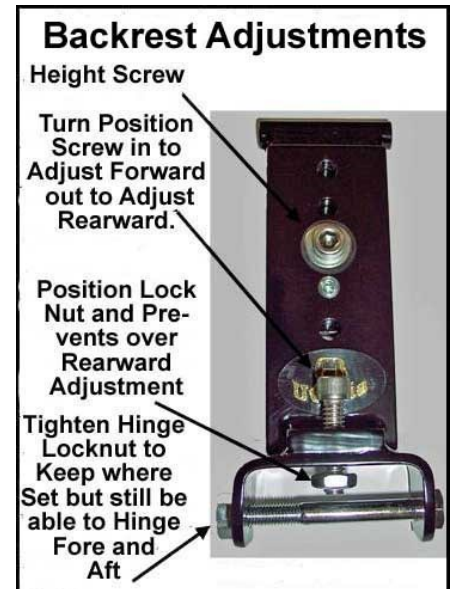


Built-in Driver Backrest for SPYDER RT 2014



A driver's backrest that becomes part of your seat. No bars in the way of the driver's hips and legs or passenger's legs. Folds forward to ease passenger getting on or off and adds to safety by getting out of the way in sudden stops. Includes up and down height adjustments, as well as driver seating position, back and forth, to help driver sit upright to avoid slouching, a big factor in driver fatigue.

Backrest is concaved and pivots at the top of bar as you lean against it so no uncomfortable edges dig into your back. Well padded with foam, but only 1 1/2" thick which takes up less seating room than most other driver backrests. Comes with a handy pouch and shoulder strap to enable conversion to a shoulder bag.

INSTALLS IN MINUTES WITHOUT TAKING OFF SEAT COVER !

Available for most motorcycle stock seats only and comes with stock stitching to match closely to your seat.

OPTIONS: Upper Bar Cover; For passenger who would feel more secure with padded bar..
 Quick-Out Bar; Seldom needed, but available when frequent removal of backrest is desired.

1351 S. Cleveland Massillon Rd, Unit A, Copley, Ohio 44321 (888)-343-3320
 email: utopia@utpr.com website: www.utpr.com



Utopia Built-in Driver Backrest Installation

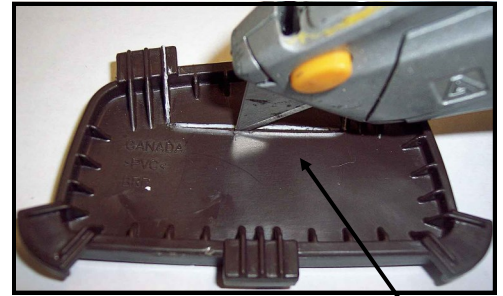
For all SPYDER RT 2014. No Need to Remove Your Seat.



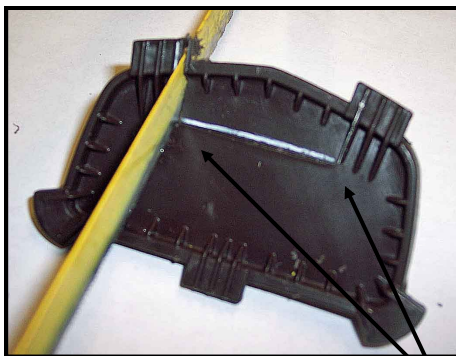
Step 1: With a slotted screw driver, carefully remove hole cover.



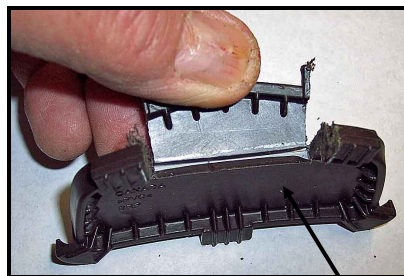
Step 2: On back side of cover mark lines as shown. Cut out will look bigger than necessary, but bigger for a reason. It allows for movement of cover when you compress foam in front of cover. If smaller it will buckle against mounting bracket.



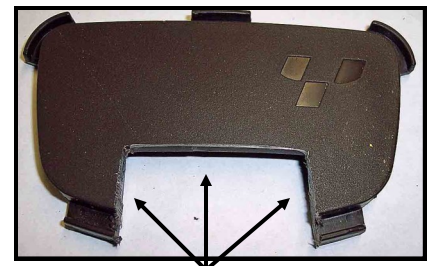
Step 3: With box knife, score line shown at least half the thickness of cover.



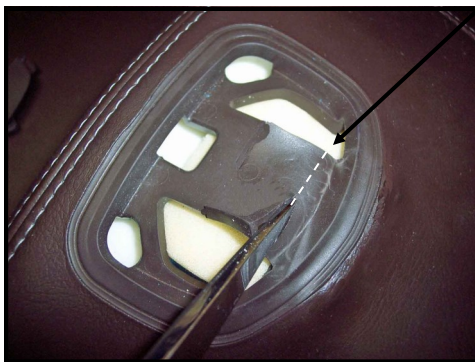
Step 4: With hack saw, or tool of choice, cut both remaining lines, to scored line.



Step 5: Bend cut piece back and forth to remove.



Step 6: Clean cut edges with edge of your pocket knife or other tool.



Step 7: 1/8" in from edge in corner cut straight line with shears as shown.

Step 8: With long serrated knife cut slit in foam connecting holes already in foam all the way through to bottom of seat through hole in seat base, approx. 2 3/4" from front edge.



Now open your seat to install mounting bracket. If you need more room to work, you can disconnect dampener from seat for it to open wider, but not necessary.

Note: Step 10 holes are recessed to allow screw head clearance to close your seat. Do not use washers, none furnished. Threaded holes you screw into are lock nuts.



Step 9: Slide mounting bracket through hole in seat base, into foam you slit, up through top of seat.

Step 10: Insert screws furnished through mounting bracket into threaded holes in seat base. Tighten screws with 5/32 Allen wrench.

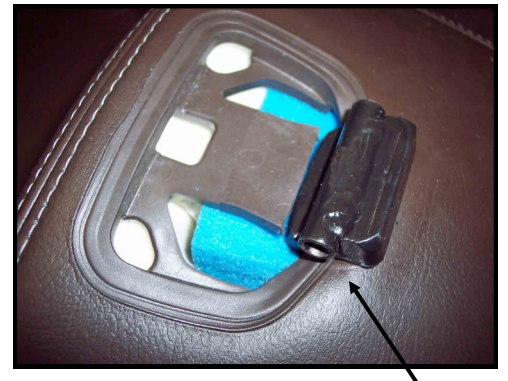




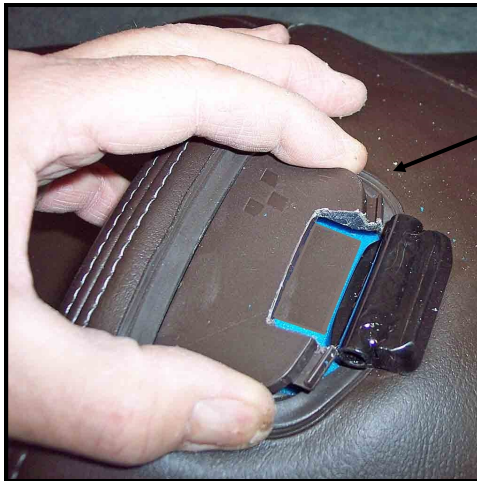
Step 11: Close seat. Bar should now look like this, coming out of seat.



Step 12: Stuff entire foam pieces furnished into the O.E.M holes. Do not worry about stuffing all the way to bottom, just make level with top. This fills void, firming up seat.

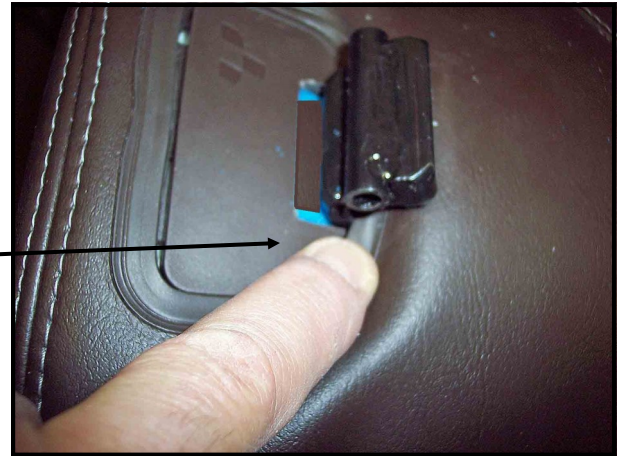


Step 13: When stuffed correctly, will look like this.



Step 14: Install plastic hole cover back on seat.

Step 15: Be sure corner catches on plastic hole cover grab rim on seat cover. Work seat cover with finger to reconnect catches on plastic hole cover.



Step 16: Plastic hole cover now in place. With rubbing alcohol clean seat cover behind bar, for next step.

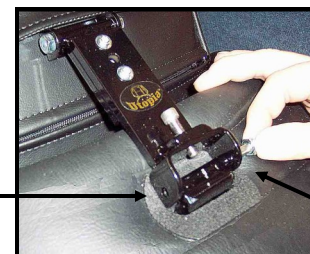


Step 17: Peel off paper from adhesive tape, on our boot. Work our plastic boot over tube on mounting bracket, with adhesive toward rear. May need to struggle some, but will go on. If boot sticks as you install, just release until you have in place.



Step 18: Make sure boot is all the way forward, tight up against back of mounting bracket. There is no adhesive on front of boot, to allow hole cover to move back and forth with foam compression when you push back into driver's seat.

Finally, attach Top Bar on back of Backrest, to Tube on Mounting Bracket, now sticking out of seat, with 2 1/4" bolt furnished. Adjust for Comfort and take a Ride!!!!



Shown here on different model bike, but same procedure.