



Utopia Driver Backrest for **POLICE SEAT** (air Bladder and Coil Over Shock)



A driver's backrest that becomes part of your seat. No bars in the way of the driver's hips and legs or passenger's legs. Folds forward to ease passenger getting on or off and adds to safety by getting out of the way in sudden stops. Includes up and down height adjustments, as well as driver seating position, back and forth, to help driver sit upright to avoid slouching, a big factor in driver fatigue.

Backrest is concaved and pivots at the top of bar as you lean against it so no uncomfortable edges dig into your back. Well padded with foam, but only 1 1/2" thick which takes up less seating room than most other driver backrests. Comes with a handy pouch and shoulder strap to enable conversion to a shoulder bag.

INSTALLS IN MINUTES "WITHOUT" TAKING OFF SEAT COVER !

1351 S. Cleveland-Massillon rd., Copley, OH 44321 330-576-3024
email: utopia@utpr.com website: www.utpr.com



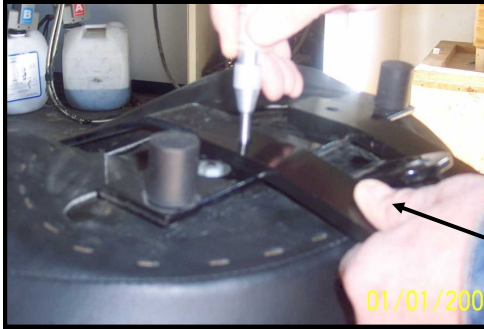
Utopia Built-in Driver Backrest Installation For Police Air Bladder and Coil Over Shock Seat

Utopia Products, Inc.

Installation of Utopia's Built-in Driver Backrest. Follow these step by step directions, viewing procedures in these pictures.



Step 1: Remove seat by taking the hinge bolt out of the front of the seat and pull pin from Air Bladder or nuts from Coil Spring on rear of seat.



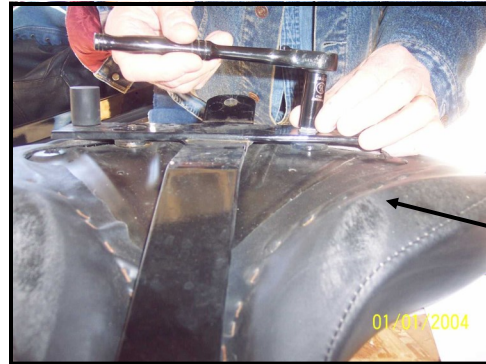
Step 2: Turn seat over on your workbench and mark holes as shown. Center Utopia Bracket on Seat Bracket, lining up legs of Utopia Bracket with front edge of Seat Bracket, for normal position as shown in step 6.

*See note below step 6

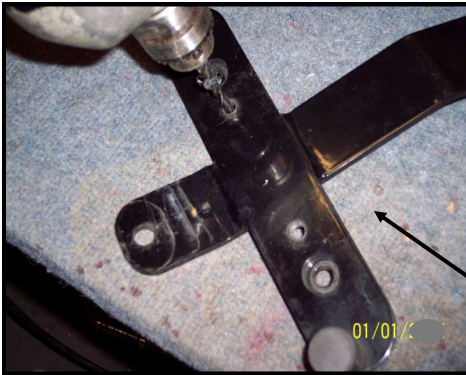


Same procedure for Air Bladder Seat (above) and Coil Over Shock Seat (left).

Note: Difference is in the stock bracket.



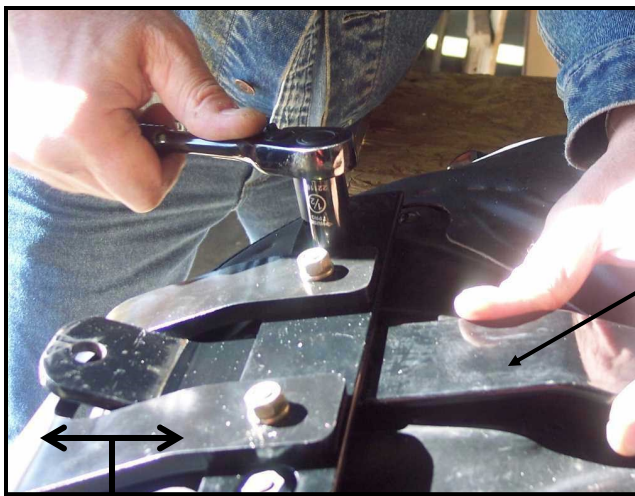
Step 3: Remove bracket attached to bottom of seat, by removing 2 nuts on rear and 1 bolt on front.



Step 4: Drill 11/32" hole, or a bit slightly bigger than the 5/16" bolts furnished. Can also use drill press if available.



Step 5: Install Utopia Bracket to Seat Bracket as shown, by putting 5/16 bolts furnished through Seat Bracket first, then into Utopia Bracket. Then install lock washers and nuts. Tighten nuts securely.



Step 6: Install Seat Bracket with Utopia Bracket installed, back on seat as shown.

THEN INSTALL SEAT ON BIKE.

Step 7: Finally, with seat installed on your bike, install bar attached to pad to tube on Utopia Bracket you just installed on your seat. Slide in 2 1/4" bolt furnished and tighten nut. Make tight enough that backrest will stay in place, but will still hinge back and forth. **Adjust Utopia Driver Backrest for Comfort and take a ride!!!!**



*NOTE: Shown in normal install position, but can move bar forward or backward to move closer or away from back of seat, before marking to drill in step 2. Rarely would want to move backward, but for a two up seat moving forward will help with clearance between front and rear seats.