



## Built-in Driver Backrest for the **KYMCO AK 550**



A driver's backrest that becomes part of your seat. No bars in the way of the driver's hips and legs or passenger's legs. Folds forward to ease passenger getting on or off and adds to safety by getting out of the way in sudden stops. Includes up and down height adjustments, as well as driver seating position, back and forth, to help driver sit upright to avoid slouching, a big factor in driver fatigue.

Backrest is concaved and pivots at the top of bar as you lean against it so no uncomfortable edges dig into your back. Well padded with foam, but only 1 1/2" thick which takes up less seating room than most other driver backrests. Comes with a handy pouch and shoulder strap to enable conversion to a shoulder bag.

### **INSTALLS IN MINUTES WITHOUT TAKING OFF SEAT COVER !**

Available for most motorcycle stock seats only and comes with stock stitching to match closely to your seat.

OPTIONS: Upper Bar Cover; For passenger who would feel more secure with padded bar.. Quick-Out Bar; Seldom needed, but available when frequent removal of backrest is desired.

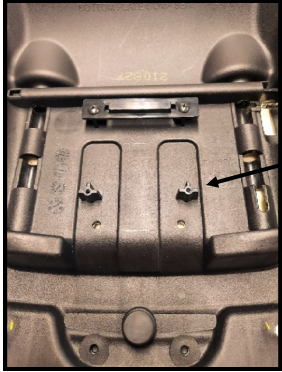
1351 S. Cleveland Massillon Rd, Unit A, Copley, Ohio 44321 (888)-343-3320  
email: [utopia@utpr.com](mailto:utopia@utpr.com) website: [www.utpr.com](http://www.utpr.com)



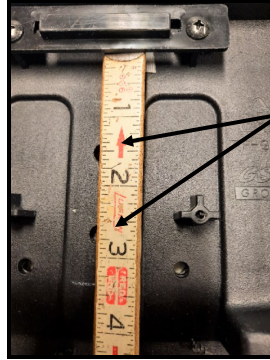
# Utopia Built-in Driver Backrest Installation for the KYMCO AK 550

Follow these step by step directions, viewing procedures in these pictures

**“First” remove Seat.**



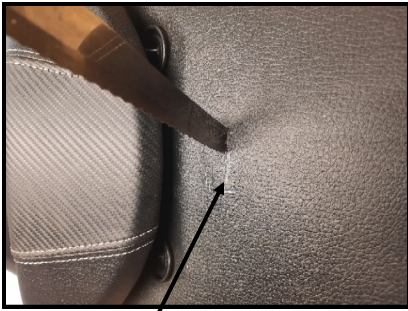
**Step 1:** Place on your work-bench bottom up. Remove the 2 Philips screws, holding the rear tool clip. You will re-install later in Step 6.



**Step 2:** Measure back 1 1/2" and 2 3/4" from front tool clip and mark centers. Drill through Seat Base, with 9/32 drill bit where you marked.



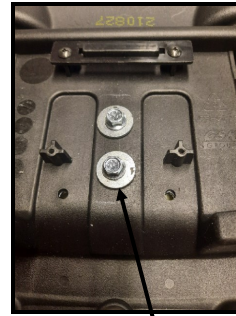
**Step 3:** Turn seat right side up. Push hard to make sure your butt pad is in rear position. Mark center 1/2" behind pad where it meets rear seat.



**Step 4:** Slide butt pad forward to assure you do not damage when you make slit in rear seat cover. With a serrated knife and cut through seat cover and foam all the way down to the seat base. Work knife tip side to side to make sure foam is clear of seat base. Do not cut wider than 1 1/2"



**Step 5:** Now slide mounting bracket into slit, all the way down to seat base, working it in between foam and seat base. Line up holes in Mounting Bracket with holes you drilled in Step 2, on bottom of seat.



**Step 6:** Insert furnished bolts through washer into Seat Base and Screw into the Mounting Bracket and tighten. Re-install the rear tool clip.



**Step 8:** Finally, install bar attached to Backrest to tube now sticking out of seat. Slide in 2 1/4" bolt furnished and install and tighten nut. Make tight enough that backrest will stay in place, but will still hinge back and forth.



**Step 7:** Install Peel and Stick Boot, then slide Butt Pad into rear position.  
**NOTE:** If you prefer more forward position, Backrest will still work. Just adjust Backrest forward to fit your position.

**Install Seat, Adjust for Comfort and Take a Ride!**

