

Built-in Driver Backrest for BMW K1600 GTL



A driver's backrest that becomes part of your seat. No bars in the way of the driver's hips and legs or passenger's legs. Folds forward to ease passenger getting on or off and adds to safety by getting out of the way in sudden stops. Includes up and down height adjustments, as well as driver seating position, back and forth, to help driver sit upright to avoid slouching, a big factor in driver fatigue.

Backrest is concaved and pivots at the top of bar as you lean against it so no uncomfortable edges dig into your back. Well padded with foam, but only 1 1/2" thick which takes up less seating room than most other driver backrests. Comes with a handy pouch and shoulder strap to enable conversion to a shoulder bag.

We also have backrests available for most other motorcycle stock seats.
 We strive to closely match the material and stitching on each seat.

Available options: Upper Bar Cover; For passenger who would feel more secure with padded bar..
 Quick-Out Bar; Seldom needed, but available when frequent removal of backrest is desired.

1351 Cleveland-Massillon rd., Copley, OH 44321 (888)-343-3320
 email: utopia@utpr.com website: www.utpr.com



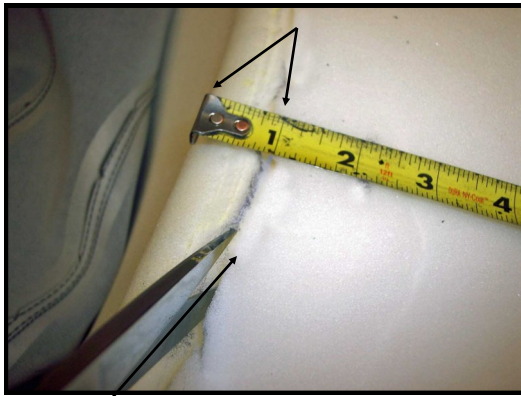
UTOPIA BUILT IN DRIVER BACKREST INSTALLATION INSTRUCTIONS FOR BMW K1600GTL

First ready Seat for Installation, by moving Heating Element Lead Wire.

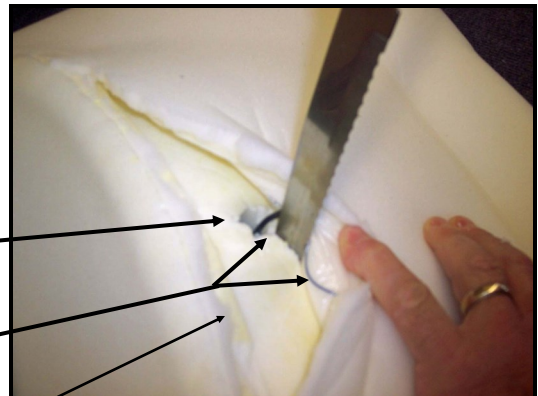
Remove SEAT from cycle.

Remove all staples holding on rear seat cover in place.

Release the wire fly pulling rear seat cover down near rear of seat.

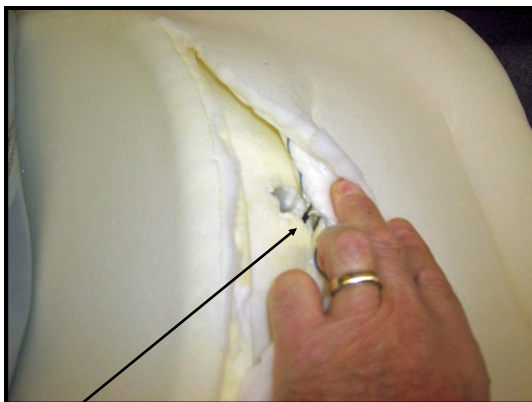


Step 1: Fold Seat Cover Forward out of the way Into Front Seat. Measure back 1" from Center of Front Seat Edge and Make a Mark about 6" long Following the Edge of Front Seat. Cut the 1/2" thick layer of Foam Covering Seat Foam.

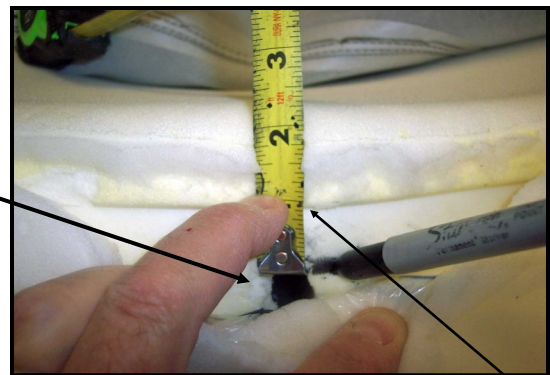


Original Hole Lead Wire is In

Step 2: Fold back the 1/2" Foam Exposing Heating Element Lead Wire. Look Under Seat Foam, make sure all Wires are out of the way, then make a 1 1/2" cut to left of Original Hole Lead Wire is in, all the way to Seat Base.

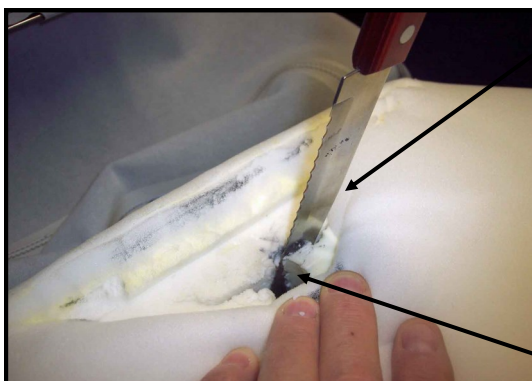


Step 3: Slide Heating Element Lead Wire out of Original Hole into the Slit you just cut, all the way to Seat Base, out of the way of next steps.



Original Hole Lead Wire was In

Step 4: With 1/2" Foam still folded back, Measure Back 2" from Center Edge Front Seat and make a Mark. Will be at Front Edge of Hole in Foam that Lead Wire originally went through.



Step 5: While holding 1/2" Foam back, make an 1 1/2" wide slit centered on the 2" Mark you just made, all the way down through the Bottom of Foam with Long Serrated Knife. Again Reach Under Seat Foam and make sure all Wires are out of way of cut.

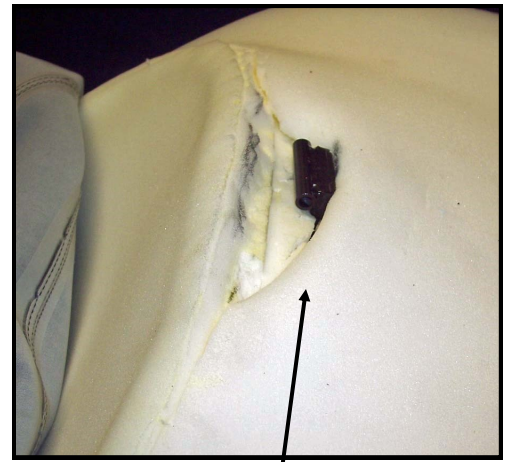
Note: While Utopia isn't Responsible for Your Cut, in case you somehow cut a wire.....not to worry, if it should happen, just Simply Splice back together as you would Any Wire You Accidentally Cut. These wires only Carry the Current to the Heating Element, Not Complicated at all.

Original Hole Lead Wire was In

Now with Lead Wire Moved, you are ready for Final Installation

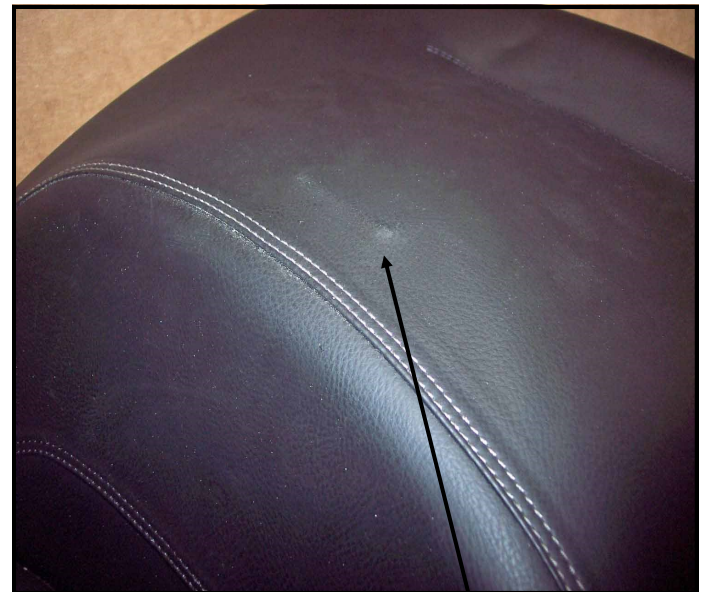
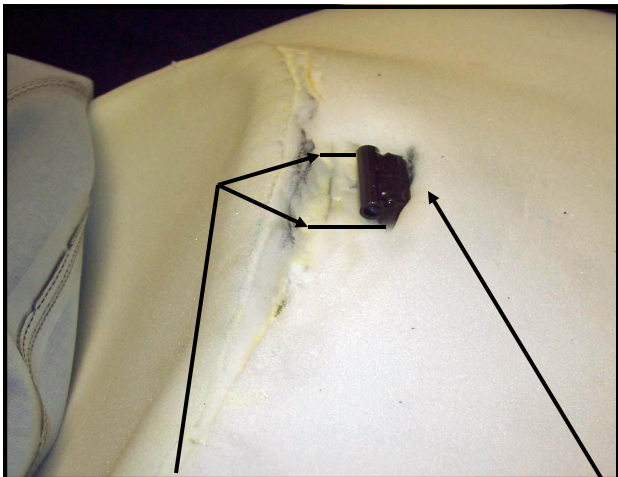


NOTE: On the GTL Step 9-11 the Tube will be behind the stitching as shown. If you have the GTLE it will be in front of the stitching, as the seat cover is made differently.



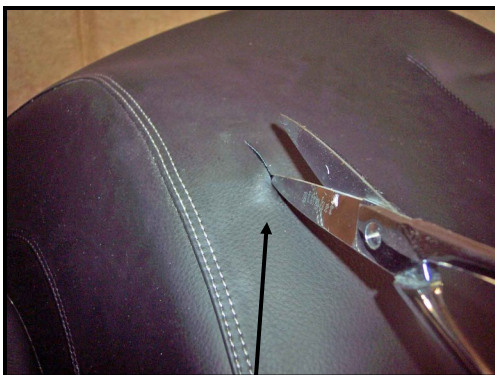
Step 6: Now Lift up Seat Foam out of the way. Center Mounting Bracket and Position as shown. Transfer Holes in Bracket to Seat Base. Drill 9/32" Holes, or slightly bigger than 1/4" in Seat Base. With Mounting Bracket in place, install with Bolts and Washers furnished. Make sure Bracket is centered and Bolts are tight.

Step 7: Slide Foam over Upright with Tube on Top, up through Slit in Seat Foam. Keep 1/2" Foam folded back.



Step 8: Now carefully Cut Slit in 1/2" Foam along side of Upright so 1/2" Foam Lays back in place to Edge of Front Seat. Again Fold 1/2" Foam with Lead Wire in it Behind Upright.

Step 9: Install Seat Cover back in place with Staples, as it was before you removed. Now you will see Tube on Upright trying to Poke through Cover.



Step 10: Slit cover with shears or shape knife, no wider than Tube, to allow Tube to Pop through.

Step 11: Install Peel and Stick Boot over Tube onto Seat Cover.

Finally Install Your New Utopia Built In Driver Backrest to Tube Sticking out of Seat. Reinstall your Seat. Adjust for Comfort. Take a Ride!!!