



Built-in Driver Backrest for the *Burgman 400* 2017 and newer



A driver's backrest that becomes part of your seat. No bars in the way of the driver's hips and legs or passenger's legs. Folds forward to ease passenger getting on or off and adds to safety by getting out of the way in sudden stops. Includes up and down height adjustments, as well as driver seating position, back and forth, to help driver sit upright to avoid slouching, a big factor in driver fatigue.

Backrest is concaved and pivots at the top of bar as you lean against it so no uncomfortable edges dig into your back. Well padded with foam, but only 1 1/2" thick which takes up less seating room than most other driver backrests. Comes with a handy pouch and shoulder strap to enable conversion to a shoulder bag.

INSTALLS IN MINUTES WITHOUT TAKING OFF SEAT COVER !

Available for most motorcycle stock seats only and comes with stock stitching to match closely to your seat.

OPTIONS: Upper Bar Cover; For passenger who would feel more secure with padded bar..
Quick-Out Bar; Seldom needed, but available when frequent removal of backrest is desired.

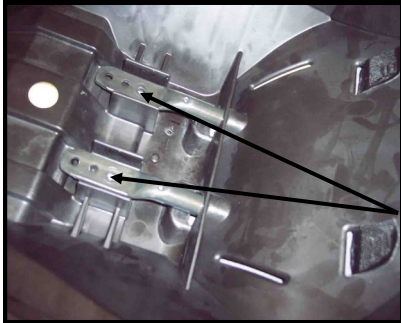
1351 S. Cleveland Massillon Rd, Unit A, Copley, Ohio 44321 (888)-343-3320
email: utopia@utpr.com website: www.utpr.com



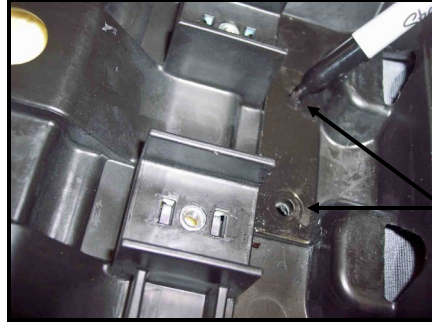
Utopia Built-in Driver Backrest Installation for the Suzuki Burgman 400, 2017 and Newer

Follow these step by step directions, viewing procedures in these pictures

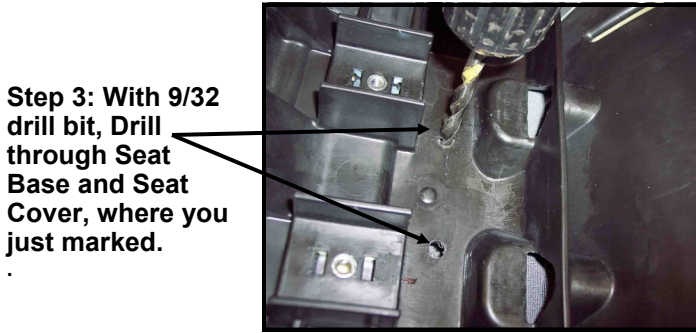
“First” remove Seat.



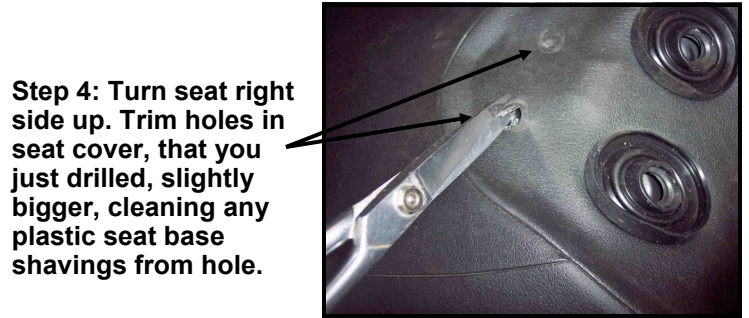
Step 1: Turn seat upside down. Find the small Phillips screws, shown here, for Stock Adjustable Pad Bracket. Remove screws, will reinstall later. Now Remove Stock Adjustable Pad.



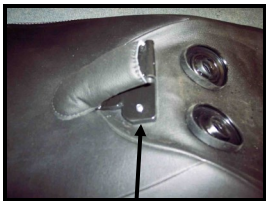
Step 2: With Stock Adjustable Pad now removed, lay furnished bottom bracket as shown and mark the holes onto seat base bottom.



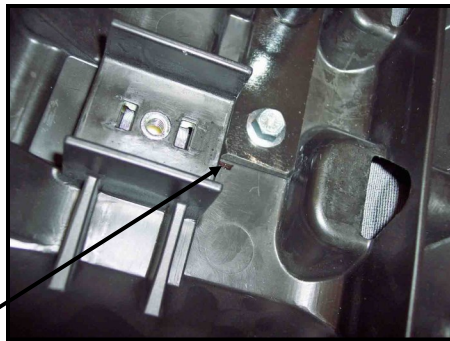
Step 3: With 9/32 drill bit, Drill through Seat Base and Seat Cover, where you just marked.



Step 4: Turn seat right side up. Trim holes in seat cover, that you just drilled, slightly bigger, cleaning any plastic seat base shavings from hole.



Step 5: Line up holes on Mounting Bracket with holes at same time place Bottom Bracket on bottom of seat as you insert furnished bolts through Bottom Bracket, through Seat Base and Screw into the Mounting Bracket and tighten.



Step 6: Re-Install Adjustable Stock Pad to Position you prefer and Re-Install small Phillips Screws you removed in Step 1.



Step 16: Finally, install bar attached to pad to tube now sticking out of seat. Slide in 2 1/4" bolt furnished and install and tighten nut. Make tight enough that backrest will stay in place, but will still hinge back and forth.



Above shows Back of Backrest, Pouch and Bar Cover, installed on seat.



Install Seat, Adjust for Comfort and Take a Ride!