



## Built-in Driver Backrest for the **Burgman 400** 2016 and older



A driver's backrest that becomes part of your seat. No bars in the way of the driver's hips and legs or passenger's legs. Folds forward to ease passenger getting on or off and adds to safety by getting out of the way in sudden stops. Includes up and down height adjustments, as well as driver seating position, back and forth, to help driver sit upright to avoid slouching, a big factor in driver fatigue.

Backrest is concaved and pivots at the top of bar as you lean against it so no uncomfortable edges dig into your back. Well padded with foam, but only 1 1/2" thick which takes up less seating room than most other driver backrests. Comes with a handy pouch and shoulder strap to enable conversion to a shoulder bag.

### **INSTALLS IN MINUTES WITHOUT TAKING OFF SEAT COVER !**

We also have backrests available for most other motorcycle stock seats.  
We strive to closely match the material and stitching on each seat.

***Available options:*** *Upper Bar Cover; For passenger who would feel more secure with padded bar..  
Quick-Out Bar; Seldom needed, but available when frequent removal of backrest is desired.*

1351 S. Cleveland Massillon Rd, Unit A, Copley, Ohio 44321 (888) 343-3320  
email: [utopia@utpr.com](mailto:utopia@utpr.com) website: [www.utpr.com](http://www.utpr.com)

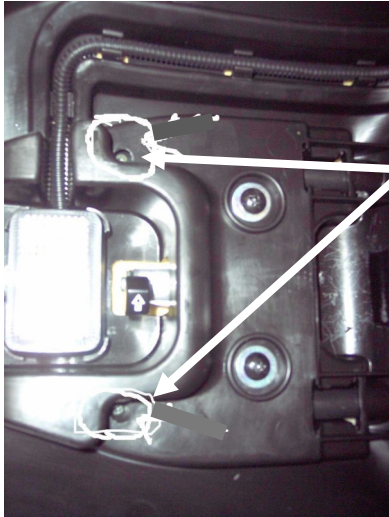


**Utopia Built-in Driver Backrest Installation for the Burgman 400.** Follow these step by step directions, viewing procedures in these pictures

“First” remove Seat.

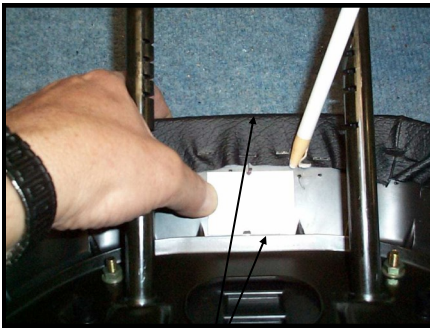
**CUT OUT THIS TEMPLATE TO USE TO CUT OUT PLASTIC ON BACK OF STOCK PAD, TO ALLOW THE INSERT OF UTOPIA INSIDE BAR.**

Read all instructions, then cut out template. Use in step 2.



Now remove Stock Adjustable Pad. (With Stock Pad in rear position and seat upside down see the small Phillips screws thru seat pan, next to light, beside the adjusting lever. Remove screws. Pull lever and pull pad from seat.)

Step 1: With staple puller or straight edge screw driver, remove vinyl backing on stock pad, that you just removed from seat and discard.



Step 2: Center template 2 3/4" from edge of pad to bottom of template. Mark around template with pencil or pen.



Step 3: With new blade in box knife, or cutter of choice, carefully cut out plastic in area you just drew. (Too deep will cut cover)

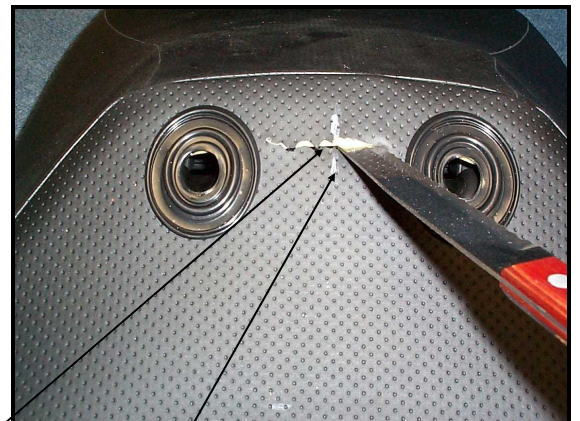


Step 4: Remove and discard plastic piece you just cut out. May need to pry up with straight edge screw driver first.



2 1/2" centered

Step 5: Measure 2 1/2" from edge of pad and center a mark. With long serrated knife, cut slit 1 1/2" long aiming for the area you just cut the plastic out of. Be careful not to cut longer than 1 1/2".



Step 6: Draw a center line with white crayon or chalk from top of seat to just past ridge under cover. Now with your knife, cut a 1 1/2" wide slit in cover, along ridge under cover, between foam and seat base.



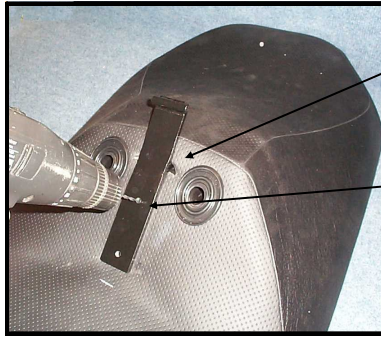
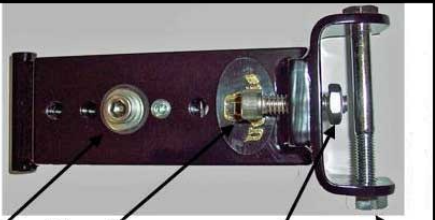
## Backrest Adjustments

Height Screw

Turn Position Screw in to Adjust Forward out to Adjust Rearward.

Position Lock Nut and Pre-vents over Rearward Adjustment

Tighten Hinge Locknut to Keep where Set but still be able to Hinge Fore and Aft



Step 7: Push small part of inside bar into slot as far as possible, being sure bar is centered from top to bottom..

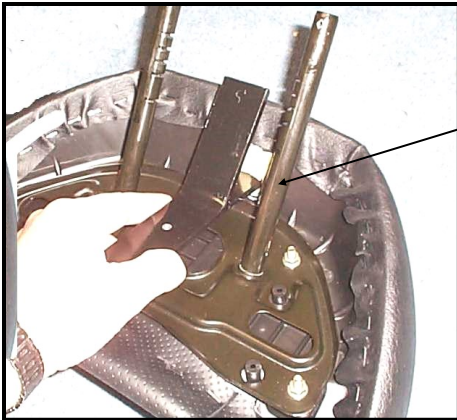
Step 8: With 1/8" bit in drill, while holding bar in place, drill through both holes, all the way through plastic seat base.



Step 9: Turn seat over and re-drill the holes you just drilled, with 9/32" bit.



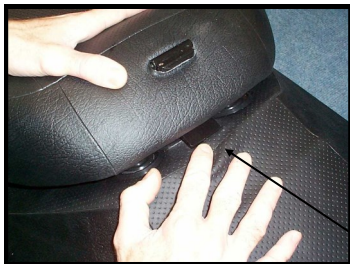
Step 10: Turn seat right side up again. With scissors trim cover at both holes, about 1/2" in diameter. This will assure vinyl is out of the way when you insert the bolts later.



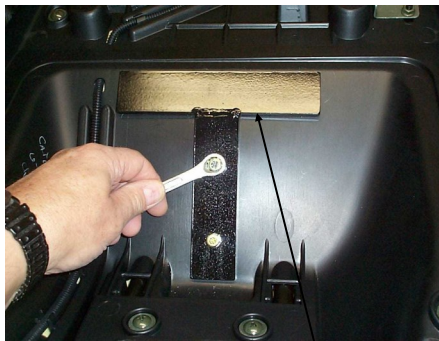
Step 11: From bottom of stock seat pad, push inside bar into the slit you made in step 4. Make sure the tube on inside bar is facing the front of stock pad and the extension is toward the rear. Push helping the tube extend through slit you made in cover on top.



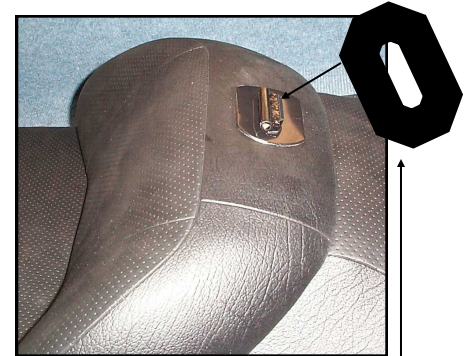
Step 12: Temporarily tape stock pad adjustment handle open, to make sliding pad back in place, much easier.



Step 13: Push stock pad back into seat, helping the backrest bar into slit, all the way to back position. Will no longer be able to use adjustments on stock pad.



Step 14: Turn seat over again. Line up Anti-Flex Bar, with holes you drilled, with drop in "T", down toward the seat base. Insert bolts with lock washers and tighten. (Will help to use small Phillips Screw driver in one hole while placing bolt in other).



Step 15: Peel and stick boot in place.

**NOTE:** If installing without stock butt pad, installation starts at step 6. So, steps 6-10 inclusive, 14, 15, & 16.

Step 16: Finally, install bar attached to pad to tube now sticking out of seat. Slide in 2 1/4" bolt furnished and install and tighten nut. Make tight enough that backrest will stay in place, but will still hinge back and forth.  
*Install seat and take a ride!*

