



## Built-in Driver Backrest For STAR VENTURE TRANSCONTINENTAL



A driver's backrest that becomes part of your seat. No bars in the way of the driver's hips and legs or passenger's legs. Folds forward to ease passenger getting on or off and adds to safety by getting out of the way in sudden stops. Includes up and down height adjustments, as well as driver seating position, back and forth, to help driver sit upright to avoid slouching, a big factor in driver fatigue.

Backrest is concaved and pivots at the top of bar as you lean against it so no uncomfortable edges dig into your back. Well padded with foam, but only 1 1/2" thick which takes up less seating room than most other driver backrests. Comes with a handy pouch and shoulder strap to enable conversion to a shoulder bag.

### **INSTALLS IN MINUTES "WITHOUT" TAKING OFF THE SEAT COVER !**

We also have backrests available for most other motorcycle stock seats.  
We strive to closely match the material and stitching on each seat.

1351 Cleveland-Massillon Rd., Unit A , Copley, Ohio 44281 (330) 576-3024  
email: [utopia@utpr.com](mailto:utopia@utpr.com) website: [www.utpr.com](http://www.utpr.com)

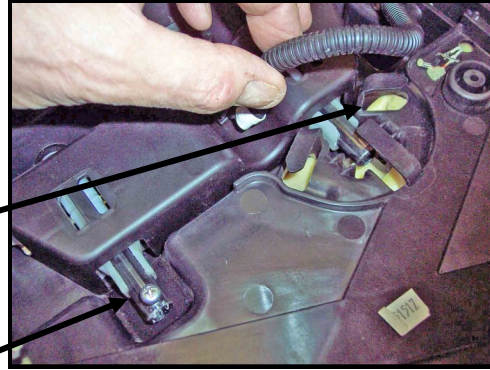


# UTOPIA BUILT-IN DRIVER BACKREST INSTALLATION INSTRUCTIONS FOR STAR VENTURE TRANSCONTINENTAL

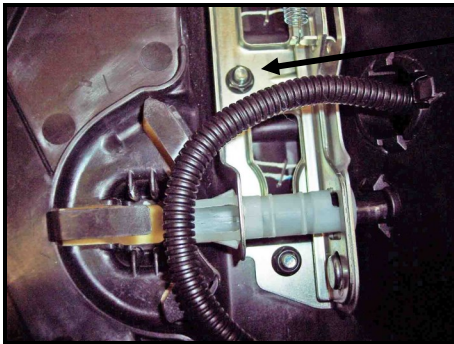
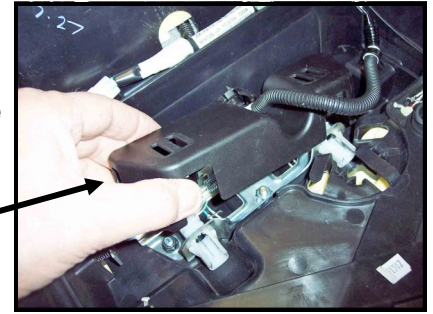
**Step 1:** Remove seat from your Bike, as shown in your owners manual. Place on workbench bottom up.

**Step 2:** Pull Wiring Harness from Plastic Fingers holding in place.

**Step 3:** Remove stop Screw that keeps Butt Pad from being Removed.



**Step 4:** Pull Strap and Slide Butt Pad forward. Remove Plastic Cover.



**Step 5:** Remove Nut, Hit Bolt with Hammer until flush with metal bracket. Won't take much effort. Now turn seat right side up.

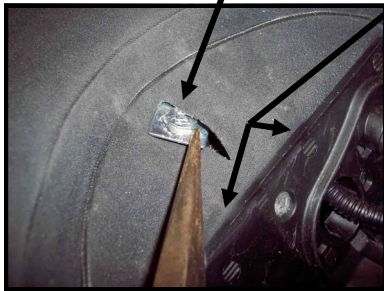


**Step 6:** Pull Strap and Slide Butt Pad out of Slots. Rest on seat as shown out of the way of next steps.

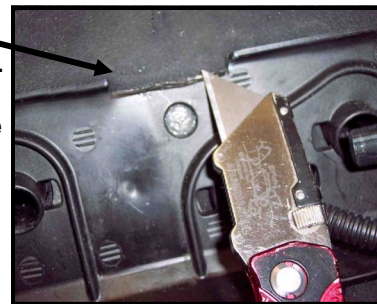


**Step 7:** Feel for the Top of the Bolt you just Hammered and make a Slit about 1" long to Expose head.

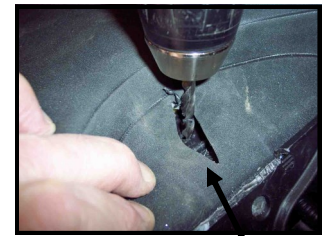
**Step 8:** With Needle Nose Pliers remove Bolt.



**Step 9:** Find Recessed Center of Ridge and cut Plastic Flush with Recess on Top, where Bracket will Install in Step 12. Approx 2" wide. Careful not to cut Seat Cover.



**Step 10:** Drill out Bolt Hole to 9/32".

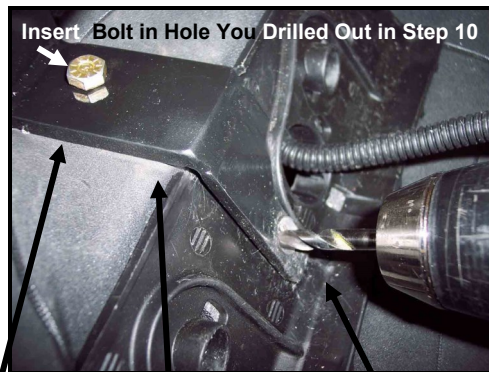


**Step 13:** Put all back to together in reverse. Steps 6, 4, 3, 2 and 1.



**Step 11:** Before Installing bar, make sure the Included Bar Cover is back about 1/4" from Tube and all the way down to bottom.

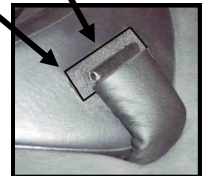
*NOTE: YOU CAN ADJUST YOUR BUTT PAD FORWARD, THEN ADJUST THE UTOPIA FORWARD TO MEET WITH BUTT PAD WITH THE ADJUSTING SCREW ON THE TOP BAR ON BACK OF BACKREST. SEE ADJUSTMENT ON REVERSE SIDE OF THIS SHEET.*



**Step 12:** Place Bar as shown. Install furnished Hex Head Bolt and Nut snugly, not tight yet. With 9/32 Bit place through Hole in Bar and Drill through Plastic. Install furnished Flathead Bolt, Washer and Nut and Tighten. Then tighten Nut on Hex Head Bolt.

If you ride with Butt Pad in rear position, recommend you Peel and Stick included Seat Protector as shown. Prevents Hinge from Rubbing on Seat Cover. Will not need it in forward Butt Pad Positions.

Clean Seat Cover with Rubbing Alcohol, before applying Seat Protector.



*Install seat on bike, adjust for comfort and take a ride!*

Finally, install bar attached to Back of Backrest to tube with 2 1/4" bolt furnished and tighten nut. Make tight enough that backrest will stay in place, but will still hinge back and forth.