

**Built-in Driver Backrest  
 for ROYAL STAR VENTURE**



All other  
 Years and  
 Colors  
 including  
 Midnight  
 (except has  
 Studs not  
 Shown)



Millennium



2001 up except Midnight

A driver's backrest that becomes part of your seat. No bars in the way of the driver's hips and legs or passenger's legs. Folds forward to ease passenger getting on or off and adds to safety by getting out of the way in sudden stops. Includes up and down height adjustments, as well as driver seating position, back and forth, to help driver sit upright to avoid slouching, a big factor in driver fatigue.

Backrest is concaved and pivots at the top of bar as you lean against it so no uncomfortable edges dig into your back. Well padded with foam, but only 1 1/2" thick which takes up less seating room than most other driver backrests. Comes with a handy pouch and shoulder strap to enable conversion to a shoulder bag.

**INSTALLS IN MINUTES WITHOUT TAKING OFF SEAT COVER !**

Available for most motorcycle stock seats only and comes with stock stitching to match closely to your seat.

OPTIONS: Upper Bar Cover; For passenger who would feel more secure with padded bar.. Quick-Out Bar; Seldom needed, but available when frequent removal of backrest is desired.

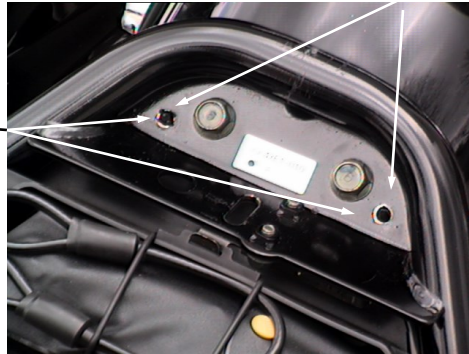
1351 S. Cleveland Massillon Rd, Unit A, Copley, Ohio 44321 (888)-343-3320  
 email: utopia@utpr.com website: www.utpr.com



# UTOPIA BUILT-IN DRIVER BACKREST INSTALLATION INSTRUCTIONS FOR ROYAL STAR VENTURE

1) Remove front seat, leave passenger seat in place if you intend to leave on cycle, if not remove before installing your new Utopia Driver Backrest bracket.

2) Push out plastic rivets holding plastic shroud to frame.



3) Then drill out these holes 9/32" to 5/16" through metal and plastic shroud (we've found some Royal Stars vary slightly, if holes do not line up, go to bigger bit and use flat washers with lock washers and bolts furnished). Be careful to protect your fender, by laying something over fender in this area, in case you drill too far. Plenty of room between frame and fender to stop in time, but play it safe.

4) Slip your new Utopia Driver Backrest bracket between frame and fender, lining up with the two holes you just enlarged.



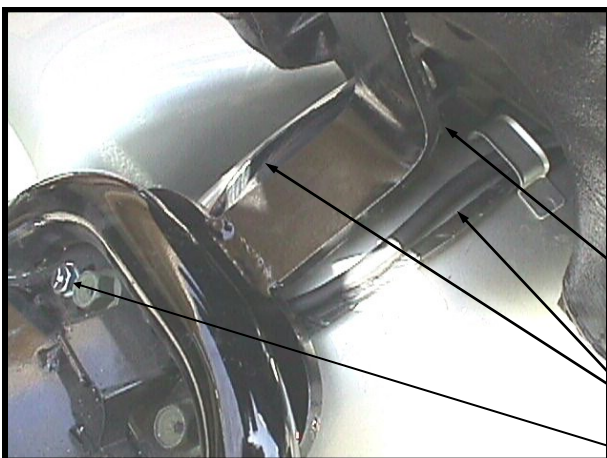
6) Attach top bar (attached to pad) to tube at the top of Utopia Driver Backrest bracket, with bolt furnished. Keep this bolt tight so it will stay where you position it.

5) Insert bolts furnished into the two holes and tighten.

Stick and Peel Boot (prevents hinge from rubbing on rear seat).

Top Bar Tube

7) Finally re-install your driver seat and adjust your new Utopia Driver Backrest to the position most comfortable to you. See adjustment instructions in drawing below.



**NOTE:** There are 5 wires here where bar rests. Make sure the 5th wire that crosses over does not double up under bar. Make it cross over as far back as possible.

"1" wire that crosses over. Cross over back here.

"2" wires on each side

Note: Make sure the bolts you install do not hit any wires!!

