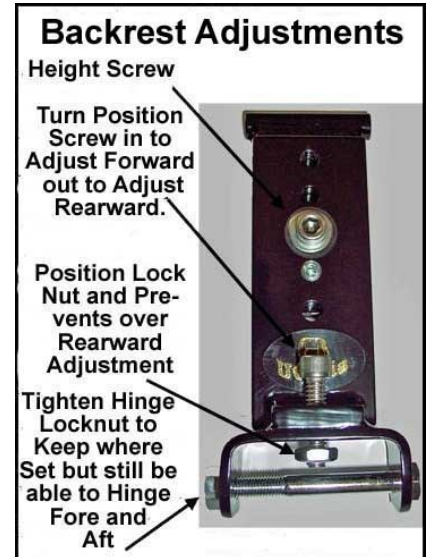




Built-in Driver Backrest For INDIAN CHALLENGER



A driver's backrest that becomes part of your seat. No bars in the way of the driver's hips and legs or passenger's legs. Folds forward to ease passenger getting on or off and adds to safety by getting out of the way in sudden stops. Includes up and down height adjustments, as well as driver seating position, back and forth, to help driver sit upright to avoid slouching, a big factor in driver fatigue.

Backrest is concaved and pivots at the top of bar as you lean against it so no uncomfortable edges dig into your back. Well padded with foam, but only 1 1/2" thick which takes up less seating room than most other driver backrests. Comes with a handy pouch and shoulder strap to enable conversion to a shoulder bag.

INSTALLS IN MINUTES WITHOUT TAKING OFF SEAT COVER !

We also have backrests available for most other motorcycle stock seats.
We strive to closely match the material and stitching on each seat.

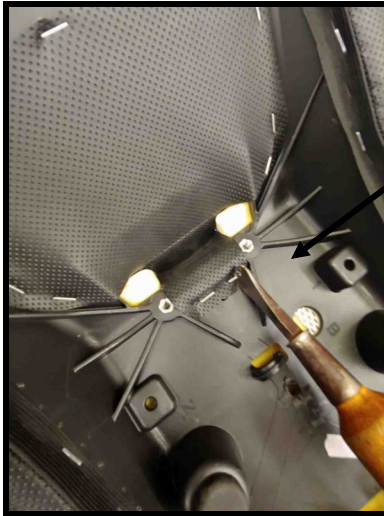
Available options: Upper Bar Cover; For passenger who would feel more secure with padded bar..
Quick-Out Bar; Seldom needed, but available when frequent removal of backrest is desired.

1351 S. Cleveland Massillon Rd, Unit A, Copley, Ohio 44321 (888) 343-3320
email: utopia@utpr.com website: www.utpr.com

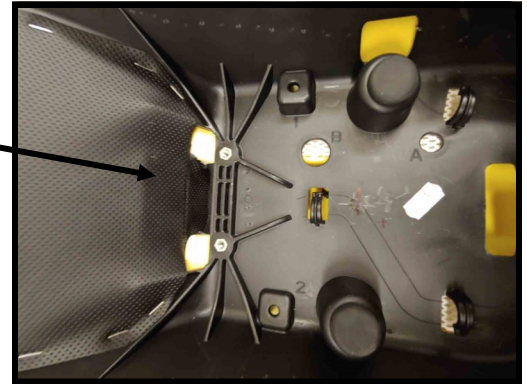


UTOPIA BUILT-IN DRIVER BACKREST INSTALLATION INSTRUCTIONS FOR INDIAN CHALLENGER

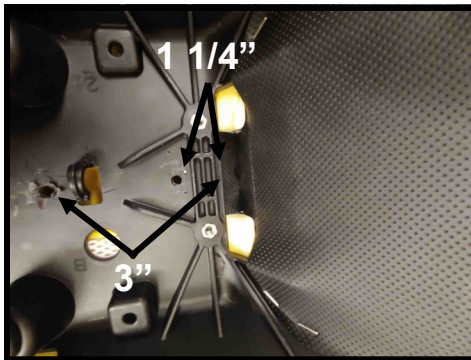
Remove seat from your Bike, as shown in your owners manual. Place on workbench bottom up.



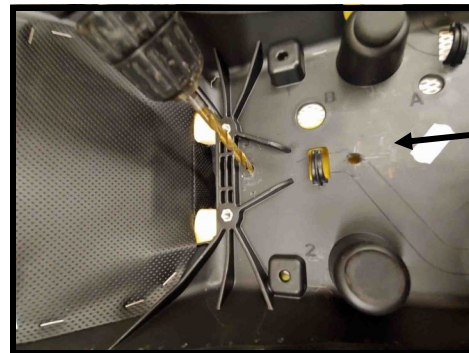
Step 2: Remove staples on fly, tuck out of the way back in seat, to allow our mounting bar to slide on top of seat base.



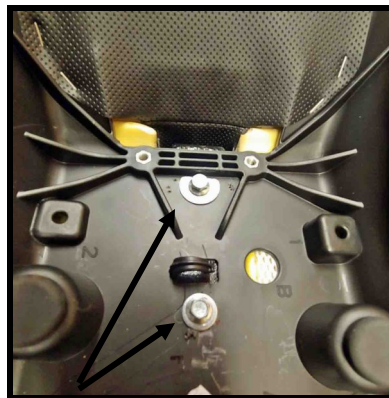
Step 3: Measure back from front edge and center mark for holes.



Step 4: Drill holes with 5/16" bit.



Step 5: Slide mounting bracket into slit, working it under seat foam resting on top of seat base inside seat.



Step 6: Line up mounting bracket threaded holes up with holes you drilled. Insert bolts through washers (cut washer front hole) and screw into the threaded holes in mounting bracket and tighten.



Step 6: Peel and stick furnished protective boot in place.

Step 7: Install backrest to tube on Utopia mounting bracket.

Finally, install seat on your bike, adjust backrest for comfort and take a ride!

