



Built-in Driver Backrest for *Valkyrie Interstate*



A driver's backrest that becomes part of your seat. No bars in the way of the driver's hips and legs or passenger's legs. Folds forward to ease passenger getting on or off and adds to safety by getting out of the way in sudden stops. Includes up and down height adjustments, as well as driver seating position, back and forth, to help driver sit upright to avoid slouching, a big factor in driver fatigue.

Backrest is concaved and pivots at the top of bar as you lean against it so no uncomfortable edges dig into your back. Well padded with foam, but only 1 1/2" thick which takes up less seating room than most other driver backrests. Comes with a handy pouch and shoulder strap to enable conversion to a shoulder bag.

INSTALLS IN MINUTES WITHOUT TAKING OFF SEAT COVER !

We also have backrests available for most other motorcycle stock seats.
We strive to closely match the material and stitching on each seat.

Available options: *Upper Bar Cover; For passenger who would feel more secure with padded bar..
Quick-Out Bar; Seldom needed, but available when frequent removal of backrest is desired.*

1351 S. Cleveland Massillon Rd, Unit A, Copley, Ohio 44321 (888) 343-3320
email: utopia@utpr.com website: www.utpr.com



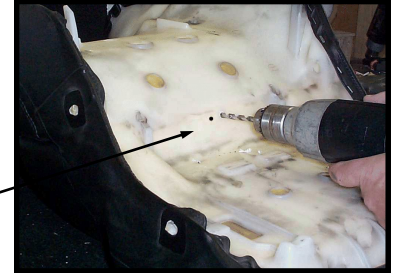
Utopia Built-in Driver Backrest Installation For Valkyrie Interstate

Utopia Products, Inc.

Installation of Utopia's Built-in Driver Backrest. Follow these step by step directions, viewing procedures in these pictures. Shown here on GL1500, but procedure will be the same on Valkyrie Interstate. Actual pictures of Valkyrie Interstate included below, because seat cover, inside and bottom bar differ.



Step 1: Lay Bottom T-Bar in place, and mark holes onto seat base.



Step 2: Drill 9/32" Holes in Seat Base



Step 3: Measure from front of seat back 1 1/2". Feel for and measure foam, not loose seat cover. Mark and center side to side. Will be centered between the real thread on band between front and rear seat on Cavalcade (see Step 3 below).

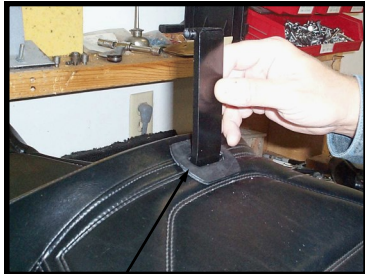


Step 4: Stick Boot in place centered over mark you just made on your seat.

Step 5: With a long serrated knife cut hole through Boot and Cover 1 1/2" wide into foam, aiming for rear of cut out on the bottom of seat. See Step 5 below. Boot will keep you from cutting too wide.

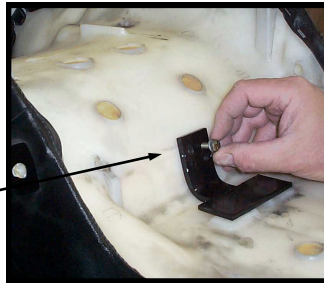


Slit will not tear more under normal use.



Step 6: Slide Inside Bar into slit, from top of seat, through Boot into foam.

Step 7: Turn seat upside down. Push down on seat compressing foam and line up holes through T-Bar, seat base and inside bar. Insert bolts through lock washer, Bottom T-Bar, seat base and into Inside Bar threaded holes and tighten.

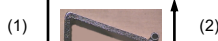


Step 8: Install bar attached to pad to tube now sticking out of seat. Slide in bolt furnished and tighten bolts. Make tight enough that backrest will stay in place, but will still hinge back and forth.

"Actual Pictures for Valkyrie Interstate Below"

PLEASE CALL IF YOU NEED HELP INSTALLING.

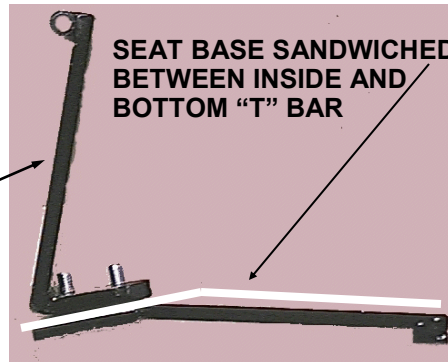
NOTE: Step 6) First insert small part of inside bar into seat cover (1) compressing foam as much as possible. Then flip upright (2), helping clear



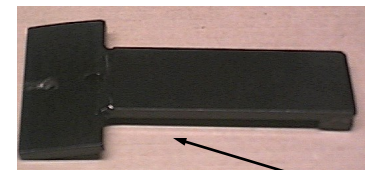
Step 4) Peel and Stick Boot. Boot sent to you in the backrest pouch, with installation instructions.



Step 3) Measure 1 1/2" back from top of rise to make slit. Center side to side.

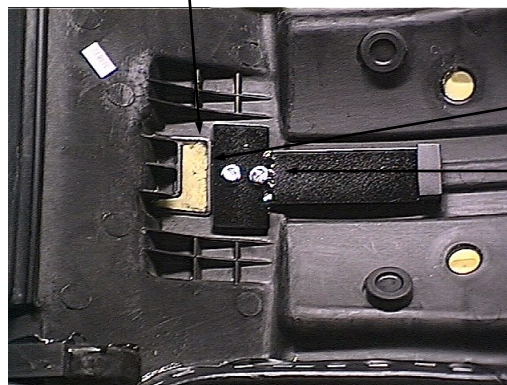


SEAT BASE SANDWICHED BETWEEN INSIDE AND BOTTOM "T" BAR



INTERSTATE BOTTOM T-BAR, INSTALL T TOWARD THE FRONT OF SEAT

Step 5) Aim for rear of cut out in seat base.



Step 1) Mark seat base by laying bottom T-Bar against cut out in seat base. Centered on middle rib, as shown, and transfer the 2 holes to seat base.