



Built-in Driver Backrest for *Helix*



A driver's backrest that becomes part of your seat. No bars in the way of the driver's hips and legs or passenger's legs. Folds forward to ease passenger getting on or off and adds to safety by getting out of the way in sudden stops. Includes up and down height adjustments, as well as driver seating position, back and forth, to help driver sit upright to avoid slouching, a big factor in driver fatigue.

Backrest is concaved and pivots at the top of bar as you lean against it so no uncomfortable edges dig into your back. Well padded with foam, but only 1 1/2" thick which takes up less seating room than most other driver backrests. Comes with a handy pouch and shoulder strap to enable conversion to a shoulder bag.

INSTALLS IN MINUTES WITHOUT TAKING OFF SEAT COVER !

We also have backrests available for most other motorcycle stock seats.
We strive to closely match the material and stitching on each seat.

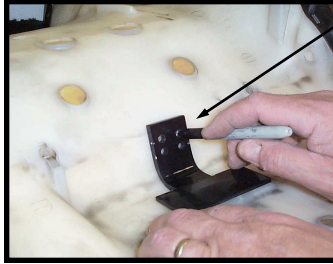
Available options: *Upper Bar Cover; For passenger who would feel more secure with padded bar.. Quick-Out Bar; Seldom needed, but available when frequent removal of backrest is desired.*

1351 S. Cleveland Massillon Rd, Unit A, Copley, Ohio 44321 (888) 343-3320
email: utopia@utpr.com website: www.utpr.com

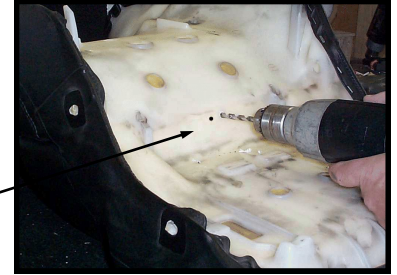


Utopia Built-in Driver Backrest Installation For Helix

Installation of Utopia's Built-in Driver Backrest. Follow these step by step directions, viewing procedures in these pictures. Shown here on GL1500, but procedure will be the same on Helix. Actual pictures of Helix included below, because seat cover, inside and bottom bar differ.



Step 1: Lay Bottom T-Bar in place, and mark holes onto seat base.



Step 2: Drill 9/32" Holes in Seat Base



Step 3: Measure from rear of seat forward 8 1/2". Feel for and measure foam, not loose seat cover. Mark and center side to side. (see Step 3 below).

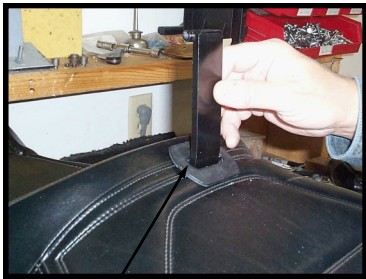


Step 4: Stick Boot in place centered over mark you just made on your seat.

Step 5: With a long serrated knife cut hole through Boot and Cover 1 1/2" wide into foam, clearing foam from area where you just drilled in step 2. Boot will keep you from cutting too wide.

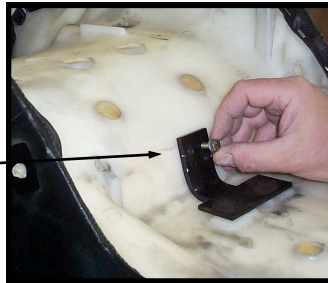


Slit will not tear more under normal use.

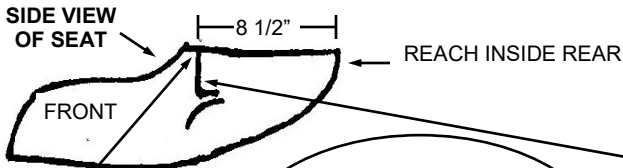


Step 6: Slide Inside Bar into slit, from top of seat, through Boot into foam.

Step 7: Turn seat upside down. Push down on seat compressing foam and line up holes through T-Bar, seat base and inside bar. Insert bolts through lock washer, Bottom T-Bar, seat base and into Inside Bar threaded holes and tighten.



Step 8: Install bar attached to pad to tube now sticking out of seat. Slide in bolt furnished and tighten bolts. Make tight enough that backrest will stay in place, but will still hinge back and forth.

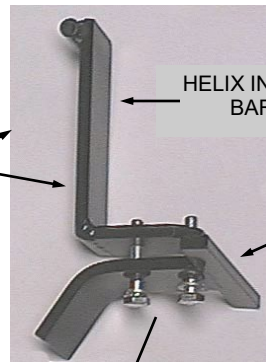


Step 3) SLIT LOCATION 8 1/2" FROM REAR

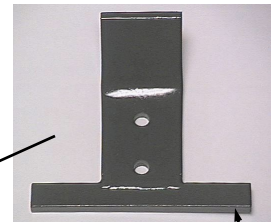
Step 4) Peel and Stick Boot

Boot sent to you in the backrest pouch, with installation instructions.

NOTE: Step 6) First insert small part of inside bar into seat (1) compressing foam till it hits bottom. Then flip upright (2), helping clear foam by reaching into rear of seat.



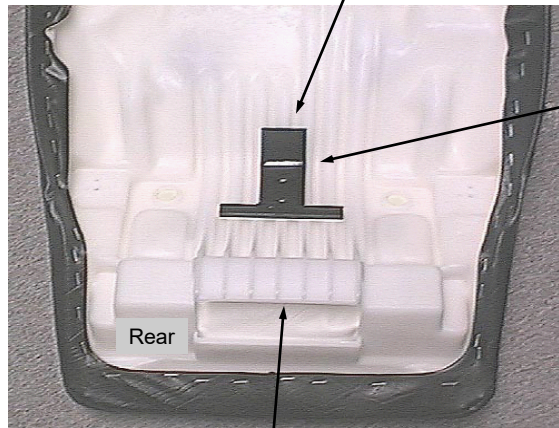
HELIX INSIDE BAR



HELIX BOTTOM T-BAR, INSTALL T TOWARD THE REAR OF SEAT

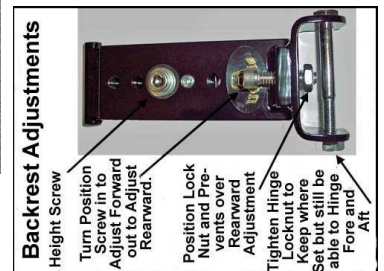


Step 4) Measure 8 1/2" forward to make slit. Center side to side.



Step 7) Can reach inside seat to help install inside bar.

Step 1) Mark seat base by laying bottom T-Bar in curve of seat base. Centered on middle rib, as shown, and transfer the 2 holes to seat base.



Backrest Adjustments

Height Screw
Turn Position Screw in to Adjust Forward out to Adjust Rearward.
Position Lock Nut and Pre-vents over Rearward Adjustment
Tighten Hinge Locknut to Keep where Set but still be able to Hinge Forward and Back