



## Built-in Driver Backrest for F6B



A driver's backrest that becomes part of your seat. No bars in the way of the driver's hips and legs or passenger's legs. Folds forward to ease passenger getting on or off and adds to safety by getting out of the way in sudden stops. Includes up and down height adjustments, as well as driver seating position, back and forth, to help driver sit upright to avoid slouching, a big factor in driver fatigue.

Backrest is concaved and pivots at the top of bar as you lean against it so no uncomfortable edges dig into your back. Well padded with foam, but only 1 1/2" thick which takes up less seating room than most other driver backrests. Comes with a handy pouch and shoulder strap to enable conversion to a shoulder bag.

### **INSTALLS IN MINUTES "WITHOUT" TAKING OFF SEAT COVER !**

We also have backrests available for most other motorcycle stock seats.  
We strive to closely match the material and stitching on each seat.

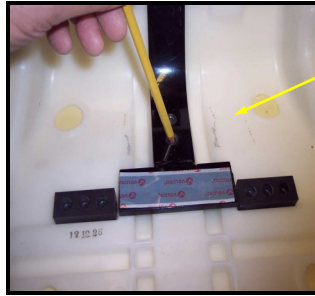
***Available options:*** Upper Bar Cover; For passenger who would feel more secure with padded bar..  
Quick-Out Bar; Seldom needed, but available when frequent removal of backrest is desired.

1351 S. Cleveland Massillon Rd, Unit A, Copley, Ohio 44321 (888) 343-3320  
email: [utopia@utpr.com](mailto:utopia@utpr.com) website: [www.utpr.com](http://www.utpr.com)

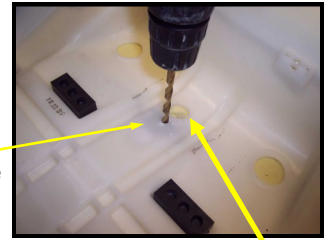


# Utopia Built-in Driver Backrest Installation for F6B

Remove seat from your F6B. Now follow these step by step instructions, viewing procedures in the pictures.



Step 1: Lay Bottom T-Bar in place, and mark rear hole onto seat base.

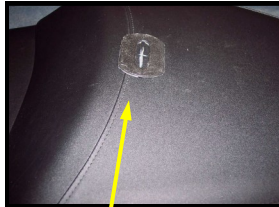


Step 2: Drill 9/32" Hole in Seat Base For Rear bolt.

Use existing hole in seat base for front

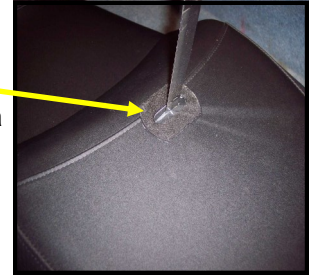


Step 3: Measure from Rear of seat forward 16 3/4". Mark center side to side.



Step 4: Stick Boot in place centered over mark you just made on your seat.

Step 5: With a long serrated knife cut hole through Boot and Cover 1 1/2" wide into foam, **clearing foam** from area where you just drilled in step 2. Boot will keep you from cutting too wide.



Slit will not tear more under normal use.



Step 6: Slide Inside Bar into slit, from top of seat, through Boot into foam. Push small end down, compressing foam until it hits bottom, then flip up large end to stand bar upright. If you could see bar inside seat it would look like this.



Step 7: Turn seat upside down. Line up holes through T-Bar, seat base and inside bar. Insert bolts through Bottom T-Bar, seat base and into Inside Bar



**Note:** Tuck all wiring in area, down between cross frame and black wiring junction box, to assure no wire gets pinched. Pull Velcro on T-Bar apart, peel off backing and stick in center of cross frame. (where highlighted in yellow). This protects cross frame and adds to rigidity of backrest.



Step 8: Install bar attached to pad to tube now sticking out of seat. Slide in bolt

## Backrest Adjustments

**Height Screw**

Turn Position Screw in to Adjust Forward out to Adjust Rearward.

Position Lock Nut and Prevents over Rearward Adjustment

Tighten Hinge Locknut to Keep where Set but still be able to Hinge Fore and Aft



**NOW.....Install seat, Adjust for Comfort and take a ride!!!!**