



Built-in Driver Backrest For STAR ELUDER



A driver's backrest that becomes part of your seat. No bars in the way of the driver's hips and legs or passenger's legs. Folds forward to ease passenger getting on or off and adds to safety by getting out of the way in sudden stops. Includes up and down height adjustments, as well as driver seating position, back and forth, to help driver sit upright to avoid slouching, a big factor in driver fatigue.

Backrest is concaved and pivots at the top of bar as you lean against it so no uncomfortable edges dig into your back. Well padded with foam, but only 1 1/2" thick which takes up less seating room than most other driver backrests. Comes with a handy pouch and shoulder strap to enable conversion to a shoulder bag.

INSTALLS IN MINUTES "WITHOUT" TAKING OFF SEAT COVER !

We also have backrests available for most other motorcycle stock seats.
We strive to closely match the material and stitching on each seat.

Available option: Upper Bar Cover; For passenger who would feel more secure with padded bar..

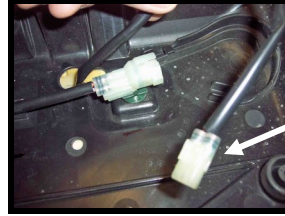
1351 S. Cleveland-Massillon Rd., Copley, OH 44321 330-576-3024
email: utopia@utpr.com website: www.utpr.com



UTOPIA BUILT-IN DRIVER BACKREST INSTALLATION INSTRUCTIONS FOR STAR ELUDER

Step 1: Remove seat from your Bike, as shown in your owners manual. Place on workbench bottom up.

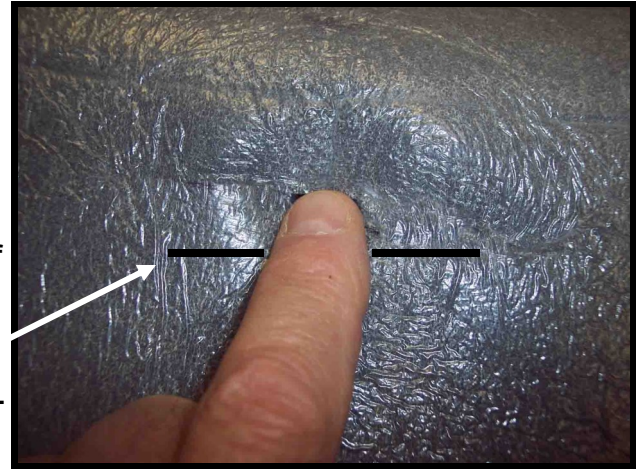
Step 2: Remove staples on rear seat cover only. Fold cover forward into front seat. Carefully remove seat foam by releasing glue with your fingers between foam and seat base.



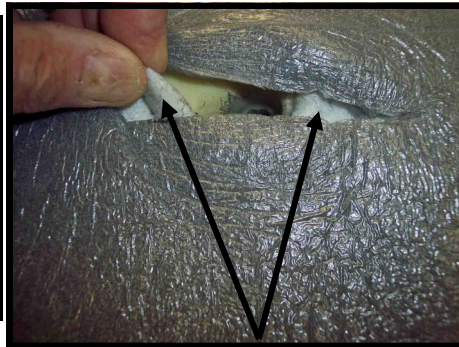
Step 3: Remove wire from housing loop and unplug.



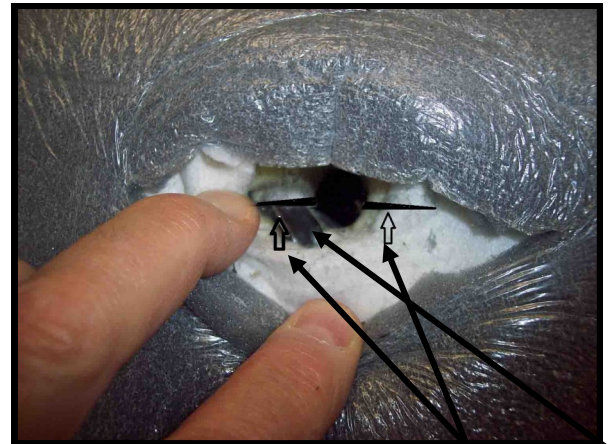
Step 4: Measure from bottom of front seat rise, up rise to back seat, approx 8". Will be on back edge of hole under gray foam. Mark gray foam about 4" wide, centered.



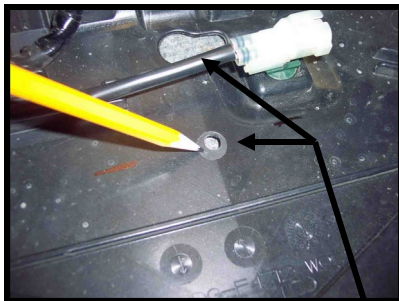
Step 5: With shears, Cut Gray foam on the 4" line you marked.



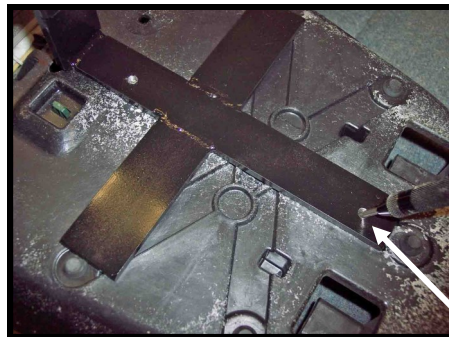
Step 6: Move white pad with wire in it, away from hole both sides.



Step 7: Cut slit with long serrated knife, through top of seat foam through bottom of foam, 1" on each side of hole in seat foam and move black wire into slit you cut, on left side of hole. Careful not to cut wire.



Step 8: Turn seat bottom up. Find circle marked on seat base, 1 1/2" behind wire hole in seat base drill 9/32" hole in center.



Step 9: Turn seat upright. Lay mounting bracket in place, lining front hole with hole you just drilled in seat base. Loosely install bolt with 1" and 2" washers. Center rear hole in bracket on seat base, mark and drill. Install bolt and washer and tighten both bolts, making sure all is centered.



Step 10: Re-install seat foam over mounting bracket, keeping wire in slit you made on left side of hole in foam, all the way through hole in seat base, as bar passes up through. Plug in wire. Will not need to glue foam in place, will stay in place under seat cover, once stapled in place. You will now see tube on bar trying to pop through seat cover. Slit cover width of bar to allow tube to pop through. Attach boot over tube. Install Utopia Backrest to tube, as shown on reverse page.

Finally, after Step 10. Install seat on bike, adjust for comfort and take a ride!