



KPM180H

Boarding pass and baggage tag printer for CUSS and SBD with autocutter and motorized retainer/ejector

KPM180H is most compact boarding pass and baggage tag printer with native AEA firmware or Windows driver for a seamless integration in CUSS platforms. KPM180H has been specially designed for small check-in desks or CUSS, where space is essential. The printer is capable of managing heavy paper, up to 255gsm, and tickets from 54mm to 82.5 mm in width, with reliable and fast printing at 203 mm/sec. The hot swap function allows you to remove the printer from the kiosk or check-in desk without turning it off. KPM180H can come equipped with a highly reliable cutter: - up to 1ML cuts- and a motorized retainer with ejecting function, to prevent the ticket from falling after cutting. The printer supports 2D barcodes and comes equipped with status monitor for receiving remote feedback from the printer, in an easy and efficient manner. In addition to the most common sensors, it is equipped with the new mobile VeryNotch sensors, capable of identifying black marks and gaps on the non-thermal side.



CHARACTERISTICS

- Extremely Compact And Reliable
- Cupps Compliant
- CUPPS compliant and native AEA 2012, IPTS 2018, ITPS 2019, ITPS 2022 support
- High speeds up to 203mm/sec
- Interface: USB, RS232 and Ethernet
- Optional heavy duty autocutter with motorized Cut&Hold/Ejector Mechanism
- Automatic ticket length detection
- ON/OFF button
- **RFID** option

FOCUS ON

- 1D and 2D IATA barcode printing: UPC-A, UPC-E, EAN13,EAN8, CODE39, ITF, CODABAR, CODE93, CODE128, CODE32, PDF417, DATAMATRIX, AZTEC, QRCODE
- RS232 / USB / Ethernet interfaces
- Sensors: adjustable Verynotch (top and bottom), ticket presence, ticket out, near paper end, transparency reading
- AEA and Windows print mode
- Custom operating system

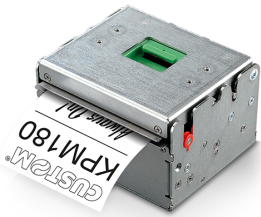
APPLICATIONS

- Airports: boarding passes / bag tags
 - Parking tickets
 - Metro and bus tickets
 - Theme parks
 - Event tickets
 - Hospital wristbands
-

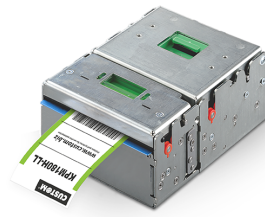
TECHNICAL SHEET

Printing Method	Thermal with fixed head
Number of dots	8 dots/mm
Resolution	203 DPI
Printing (mm/sec)	203 mm/sec
Character set	Latin, Cyrillic, Chinese
Paper width	from 54 mm to 82.5 mm
Emulation	CUPPS compliant and native AEA 2012, IPTS 2018, ITPS 2019, ITPS 2022 support
Interfaces	RS232 / USB / Ethernet
Data Buffer	16 KB text / 1 MB graphics
Flash Memory	3 MB
Drivers	Windows® (32/64 bit) – only on request WHQL and silent installation; Linux (32/64 bit); Virtual COM (Linux or Windows 32/64 bit); OPOS; Android™; iOS
Power supply	24 Vdc±10% , from 100 Vac to 240 Vac
Medium consumption	1.5A (12.5% dots turned on)
Head Life	100Km / 100M pulses
MCBF	1,000,000 cuts (optional)
Operating temperature	from -10°C to +60°C
Dimensions	97.5 (L) x 67 (H) x 108 (W) mm
Weight	0.8 Kg

MODELS



915AH021700700
PRINTER KPM180H ETH USB
RS232 AVIATION



915AH021300700
PRINTER KPM180H CUT ETH USB
RS232 AVIATION



915AH021800700
PRINTER KPM180H UHF RFID CUT
ETH USB RS232 AVIATION

Via Berettine, 2 - 43010 Fontevivo PR - VAT: IT02498250345 - TEL: +39 0521 680111 - FAX: +39 0521 610701 - UNIQUE CODE: 8RQN7AZ

The technical data on this website are not binding and may be changed without advanced notice.

Last update: 19 February 2024