

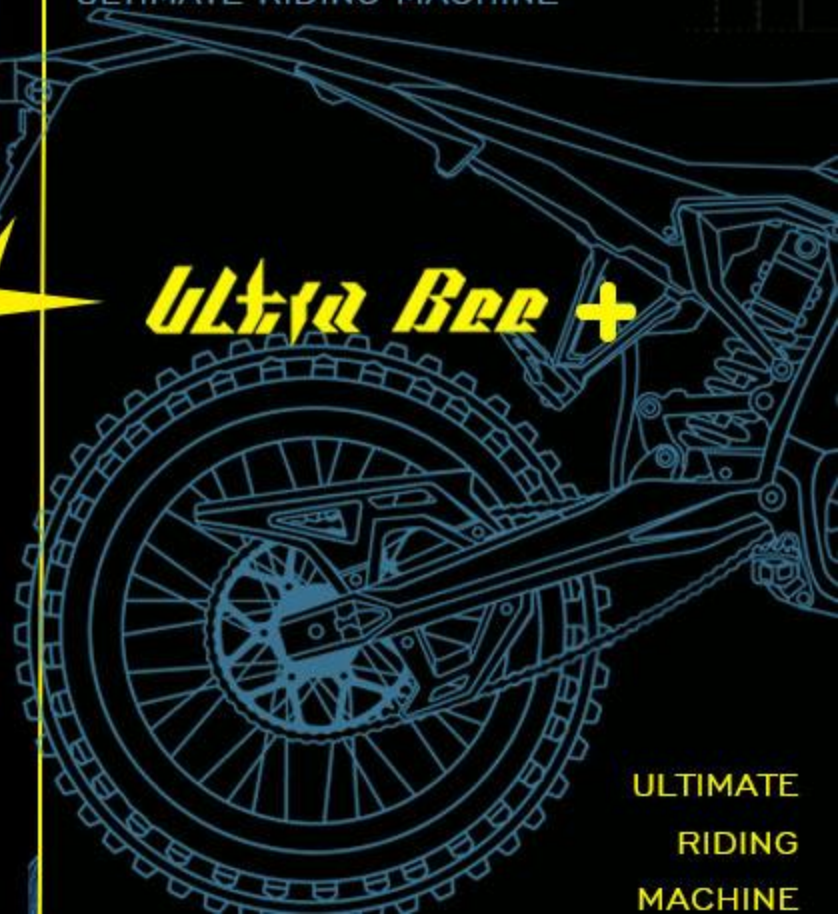
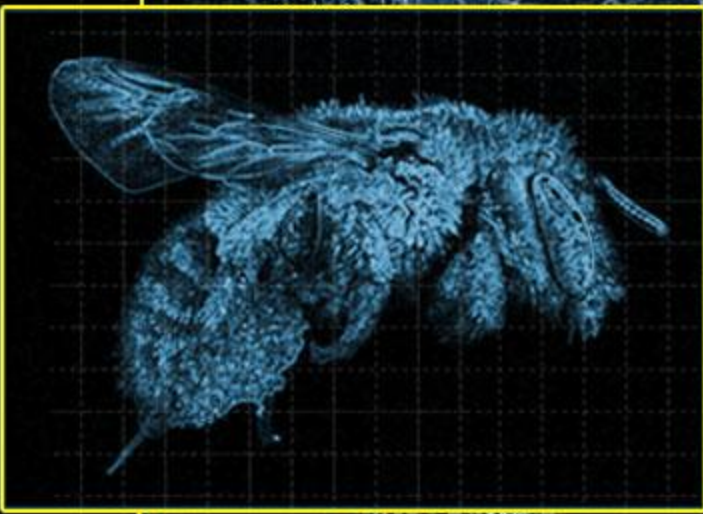
BALANCING ON THE CUTTING EDGE

# BALANCING ON THE CUTTING EDGE

ULTRA BEE IS COMING  
BALANCING ON THE CUTTING EDGE  
ULTIMATE RIDING MACHINE

*Ultra Bee +*

ULTIMATE  
RIDING  
MACHINE





# Ultra Bee

BORN FROM THE SURREAL  
CROSS COUNTRY RACE

BORN FROM THE SURREAL  
CROSS COUNTRY RACE



ULTRA BEE  
IS COMING  
BALANCING  
ON  
THE CUTTING EDGE



VERSATILE

ULTI-PURPOSE

KEY

BALANCING ON THE CUTTING EDGE



极蜂 Ultra Bee



# ULTA BEE



**2.3s**

0-50km/h

**440N.M**

Max. torque

**12.5 KW**

Peak power

**140KM**

Max. range \*

**SRTC**

Surrón Traction  
Control system

**74V55AH**

High performance  
Lithium-ion battery pack

**85KG**

Ultra Light  
Weight Design

Frame color



Body color



**Marble tile Green****Ultra bee yellow**

## Technical Details

Parameter	Ultra Bee Trail Version	Ultra Bee X Version(off road)
Dimension	2060mm*880mm*1178mm	2010mm*880mm*1178mm
Curb weight	88KG	85KG
Carrying capacity	100KG	100KG
Ground clearance	318mm	
Wheel base	1380mm	
Seat height	910mm	
Front fork travel	240mm	
Rear shock/wheel travel	85/240mm	
Power system	PMSM	
Maximum power(Motor)	12.5KW	
Maximum torque(Wheel)	440N.m	
Top speed	> 90KM/h	
Max range	140KM@40KM/h	
WMTC range	90KM	
Battery type	74V55AH Lithium-ion Battery pack	
Charge time	4.5h	
Frame material	forged aluminium alloy	
GPS Terminal	APP connection(if available)	
Tyres type	Front 80/100-19 off-road	
	Rear 90/90-19 off-road (80/100-19 optional)	
Assistance functions	Surrón Traction Control system	
	Surrón Energy Regenerative System	

\*Range and Top speed might varies from weight of loading, ambient temperature, acceleration rate, terrain etc. all the data above was tested by rider weight 70kg, ambient temperature of 27°C, data was collected from steady speed at 40km/h on the dry, flat tarmac track.



# "BEE" STRIKING "ULTRA" REVOLUTION

---

Another bold attempt! Another milestone breakthrough!  
Engineered with learning from "bee family"  
last few years' race experiences,  
Ultra Bee —the "ludicrous" new model has finally  
launched.

A detailed view of the front section of a motorcycle, showing the handlebars, mirrors, and the upper part of the engine and frame. The motorcycle is centered in the lower half of the image.

# ULTRA

# PERFORMANCE





**Ultra-light aluminum  
alloy forged chassis**

**Optimized lightweight  
offroad braking system**



**Self-developed Intersect TR  
rear suspension system**

# Out from within

---

Inspired by its successful predecessors, Surron's new Ultra Bee takes performance to a whole new level. Surron's 4th generation power platform is at the heart of our new vision for this mid-sized off-road powerhouse. Our innovative new power platform delivers precision lightweight handling, smooth power output, and integrates Surron's refined off-road traction control system to assist you in conquering the obstacles you experience on each ride. Our race refined braking system will significantly increase your confidence in both demanding trail and track use. The unique TR rear suspension system, combined with the brand new front suspension systems, will inspire confidence to ride faster, jump farther, and take corners with more confidence on the Ultra Bee.





## **Balancing On the Cutting Edge**

---

Base on the design concept of “Balancing On the Cutting Edge” , Ultra Bee matches an aluminum alloy forged chassis with our 4th generation compact powertrain, resulting in 85kg weight, evenly distributed. This lightweight balanced design can even be lifted with your bare hands.

the Ultra bee’s setting can bring trail motorcycle capability to your everyday commute, it truly is the ultra-revolution.





# 74V55AH

## High Performance Li-ion Battery Pack

---

The brand new, structured battery pack (4070wh) brings high power density and battery cycle life (up to 1500 times\*), while achieving an even lower battery discharge temperature raise rate. This new design improves battery pack reliability and continuous discharge capability. The total weight of 20.5kg has achieved an industry-leading power density of 200Wh/kg.

\* After a full cycle life of approx. 1500 times, the battery pack can still maintain the state of health over 80%.



## State of The Art Perfectly Balancing



## Must I turn off TC when riding in dirt?

Featured across all the Ultra Bee range, the Surrón Traction Control System (SRTC) is the latest multi-condition off-road traction control system. The SRTC has three rider selectable settings controlled by just one button, giving the rider the ability to find the optimal control in any off-road condition.





## Riding Mode Switch

ECO/DAILY/SPORT/Reverse four riding mode available,  
All our new designed switches have been ergonomically designed so that they are easy to operate, even with you are dashing through a tight line without taking your eyes off the road. With improved Reverse Mode, it makes your riding with more confident, never worried about stuck in the trail again.





## Full Adjustable Suspension System

Featuring a newly invented suspension system with 240mm travel providing a wide range of adjustability for maximum safety and comfort while riding on both dirt roads and street. The unique chassis design and steering bump stops provides more protection from damage in the event of a fall.





## Riding Anytime

A hidden space under the seat is designed specifically for the Ultra Bee's charger.

With a reserved air-cooling duct, recharging with your Ultra Bee charger on your bike is possible. No more heavy backpack is required to take your charger along for the ride.

No more worry about lack of power. All you need now is focus on ADVENTURE. Charge wherever and whenever you want.\*





## Surrón IoT System

The Surrón IoT (Internet of Vehicle) System includes a rich feature set, such as vehicle general information, remote status checking, ride tracking, anti-stolen safety protection, OTA update, system self-diagnostic, etc.

\* The charger can safely work in the under-seat compartment, but it is not recommended to use the charger in narrow, confined space or when the ambient temperature is higher than 35°C, because the charging time will significantly increase due to possible overheat.



## New Innovative Powertrain

---

The Surron 4th generation powertrain was designed uniquely for Ultra Bee. Its special full isolated electrical architecture can avoid potential interference between high and low voltage circuit components. The combination of 74V55AH battery pack and 12.5KW / 440N.m torque drivetrain makes Ultra Bee a lighting quick track or trail weapon allowing you to push your limits to the maximum.





# ULTRA revolution, BEE ready!

Unchain your power and passion.

\* All vehicle model images and specifications on this page are for reference only and may not represent the version imported to your region. Please check with your local Surron authorized dealer for the final specifications.

