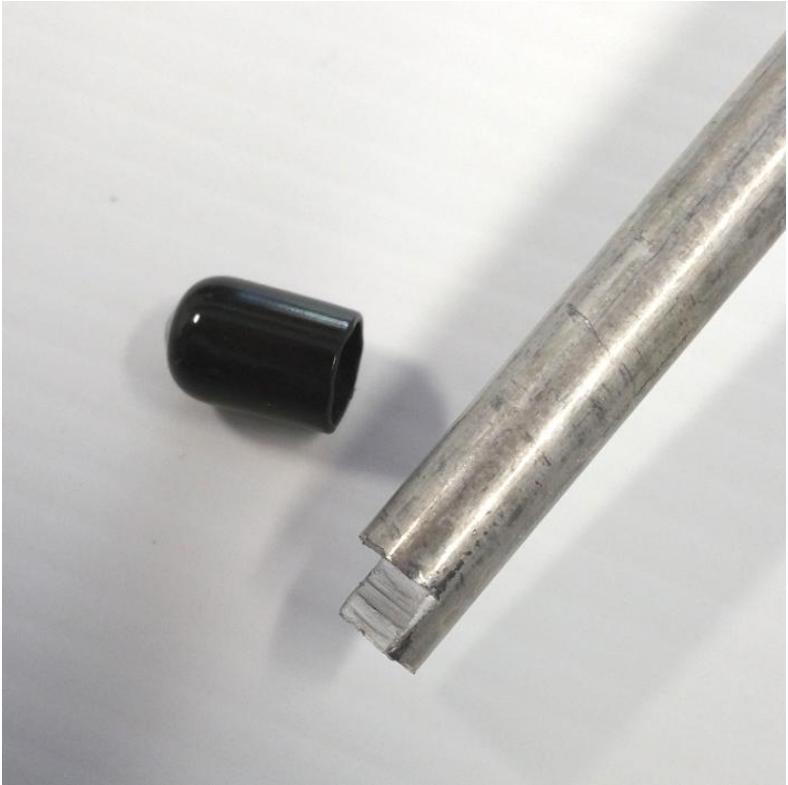




Corner
Suspension
Rod
Attachment
(Classic
Box)

Remove protective cap from base of aluminum rod.





Lower the aluminum rod down through the hole of the top corner connector (black) into the mating hole in the bottom corner connector (black).

The notched fit at the bottom will position the rod toward the center of the whelping box. However, it can be slightly lifted and temporarily swiveled outside the box when not in use.