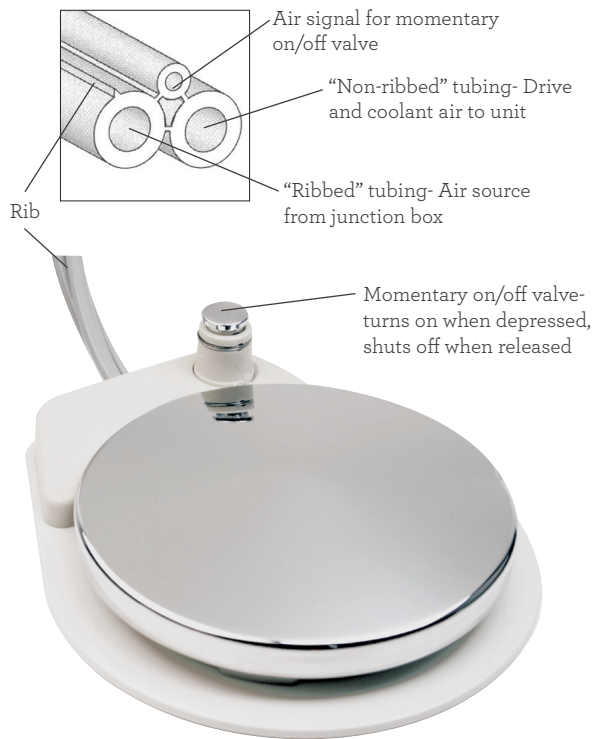


3 Hole Foot Control Installation

(Model #04-03 with a momentary on/off for a chip blower or scaler)



- Step 1-** Turn the unit off.
- Step 2-** Note where each line of your existing foot control is connected and disconnect.
- Step 3-** The large “ribbed” tubing connects to the source of air in the junction box. The large “non-ribbed” tubing connects to unit for drive and coolant air. The small tubing connects to the unit for an air signal to activate accessories.
- Step 4-** Apply liquid soap to tubings and slip sleeve clamps over tubings (approx. 3/8” from end) with the internal bevel facing the barb.
- Step 5-** Slip the tubing over the barb and lock tubing by sliding sleeve clamp over tubing portion on the barb with a pliers or sleeve tool.
- Step 6-** Turn unit on and test for leaks and proper function.

Note: Take care to not break barbs when installing tubings and clamps. Inserting tubing ends in hot water will further aid this process. If the foot control “hisses” before activation, the large tubings are hooked up in reverse.