

PARTS LIST



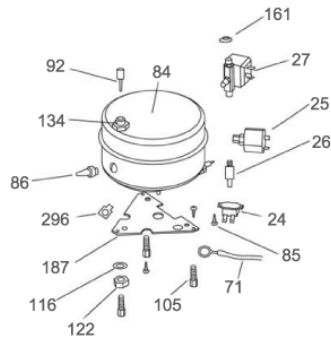
2021.07.14

TABLE OF CONTENTS

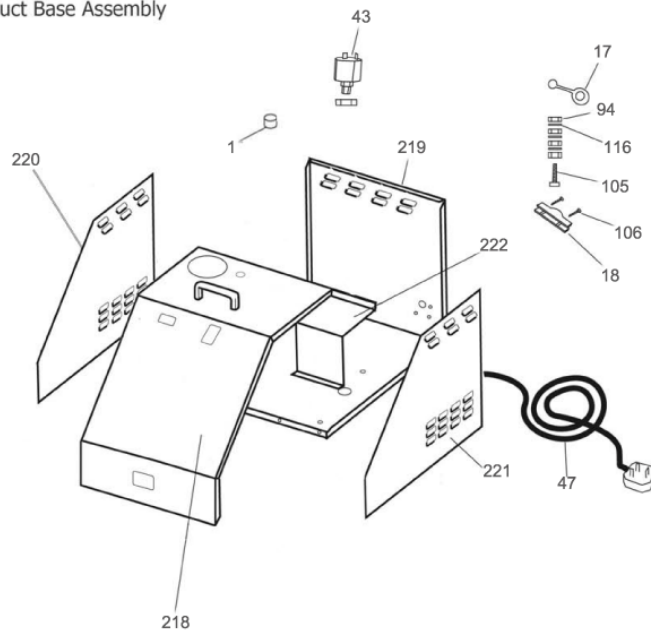
| | |
|--|----|
| SO4500 (1)..... | 1 |
| SO4500 (2)..... | 3 |
| Single parts (1)..... | 5 |
| Single parts (2)..... | 7 |
| Single parts (3)..... | 9 |
| Accessories..... | 11 |
| Brush and Clip - COLOUR-CODING EXTRAS..... | 13 |

SO4500

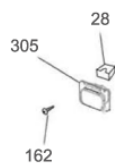
Boiler Assembly



External Parts & Product Base Assembly



Hose Inlet Sockets



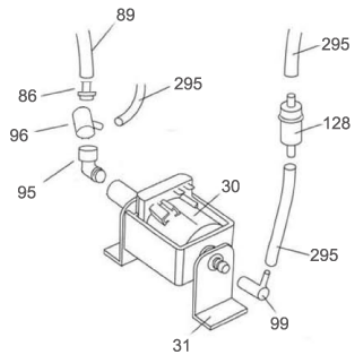
| No. | Part No. | Qty. | Description | Part Note |
|-----|----------|------|--------------------------------------|-----------|
| 01 | 31000201 | 1 | 1/4 INCH SPINDLE CONTROL KNOB | |
| 17 | 31000204 | 1 | HEYCO BUSH 01/11920/0 | [1] |
| 18 | 31000360 | 1 | CORD CLAMP INT STR/RELIEF 01/22647/0 | [1] |
| 24 | 31000207 | 1 | THERMAL CUT-OUT AND T-STAT 180/260 | [2] |
| 25 | 31000208 | 1 | PRESSURE SWITCH | |
| 26 | 31000209 | 1 | RELEASE VALVE 11300 5/6 1/8BAR | |
| 27 | 31000210 | 1 | SOLENOID VALVE | |
| 28 | 31000361 | 1 | ILME FEMALE POWER SUPPLY | |
| 43 | 31000214 | 1 | AC LINE FILTER W/NUT AND WASHER | |
| 47 | 31001330 | 1 | 240V EU SCHUKO MAINS CORD 10M | |
| 47 | 31000218 | 1 | CORD 3W 10M H05V2V2-F 1.5MM2 UK | [1] |
| 71 | 31000383 | 1 | LOOM 31 EARTH WIRE | |
| 84 | 31000228 | 1 | BOILER 1950W ELEMENT | |
| 85 | 31000394 | 1 | SCREW M4 X 6 PAN POZI TAPTITE | |
| 86 | 31000395 | 1 | HOSE CONNECTOR 1/8 INCH | [2] |
| 92 | 31000230 | 1 | WHITE DIPPER | [3] |
| 94 | 31000400 | 1 | NUT M5 HEX PRESSES BRASS 3MM | |
| 105 | | 1 | Screw M5x25 | [4] |
| 106 | | 1 | Screw no 8x1 | [5] |
| 116 | | 1 | Proof washer M5 | [6] |
| 122 | 31000410 | 1 | NUT M5 FOR BOILER | |
| 134 | | 1 | Adaptor 1/2" to 3/8" | [7] |
| 161 | 31000245 | 1 | LEMON CLIP - 2 EARED CLAMP | |
| 162 | 31000246 | 1 | S/S M4 X 10MM ALLEN HEAD BOLTS | [2] |
| 187 | 31000418 | 1 | BOILER BRACKET 4 BAR BOILER | [1] |
| 218 | | 1 | Front/top | [8] |
| 219 | | 1 | Back | [9] |
| 220 | | 1 | Side L | [10] |
| 221 | | 1 | Side R | [11] |
| 222 | | 1 | Bottle shelf | [12] |
| 296 | | 1 | Eath spade | [13] |
| 304 | 31000263 | 1 | MATRIX STEAM AND VACUUM ACC KIT | [14] |
| 305 | 31000264 | 1 | FRONT SOCKET ASSY | [2] |

Part Notes:

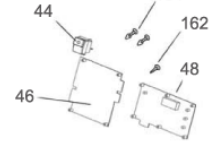
- [1] - NO LONGER AVAILABLE
- [2] - STOCK COVERS GUARANTEE
- [3] - ALTERNATIVE USE 31000244
- [4] - Screw M5x25
- [5] - Screw no 8x1
- [6] - Proof washer M5
- [7] - Adaptor 1/2" to 3/8"
- [8] - Front/top
- [9] - Back
- [10] - Side L
- [11] - Side R
- [12] - Bottle shelf
- [13] - Eath spade
- [14] - O-ring kit for front socket and extension tubes

SO4500

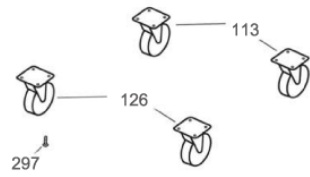
Auto Fill Pump



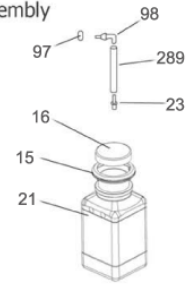
Switches & Electronics



Wheel Assembly



Bottle Assembly



| No. | Part No. | Qty. | Description | Part Note |
|-----|----------|------|---------------------------------------|-----------|
| 15 | | 1 | Bottle gasket | [1] |
| 16 | 31000203 | 1 | BLACK BOTTLE CAP | |
| 21 | 31000205 | 1 | 5 LITRE BOTTLE 310-71144 | |
| 23 | | 1 | Clean filter trio | [2] |
| 30 | 31000211 | 1 | PUMP EX5 W/BRASS | |
| 31 | 31000363 | 1 | RUBBER MOUNTING AUTOFILL PUMP | |
| 44 | 31000215 | 1 | MAINS ON/OFF SWITCH W. LIGHT | |
| 46 | 31000217 | 1 | MAIN PCB POWER BOARD 4 BAR | |
| 48 | 31000219 | 1 | DISPLAY BOARD PCB W/RIBBON | |
| 86 | 31000395 | 1 | HOSE CONNECTOR 1/8 INCH | [3] |
| 89 | 31000397 | 1 | BRAIDED EPDM TUBE 5MM ID 10MM OD X 1M | |
| 95 | | 1 | Elbow 1/8" | [4] |
| 96 | 31000231 | 1 | DEARAETOR DEA500 BRASS | |
| 97 | 31000401 | 1 | BOTTLE SEAL NUT | [5] |
| 98 | 31000402 | 1 | SPIGOT BOTTLE SEAL | |
| 99 | 31000232 | 1 | INLET RUBBER ELBOW | |
| 104 | 31000407 | 1 | SPACERS FOR MAIN BOARD M4 | |
| 113 | 31000408 | 1 | CASTER NO BRAKE | |
| 126 | 31000235 | 1 | CASTOR WITH BRAKE | |
| 128 | 31000236 | 1 | INLINE WATER FILTER | |
| 162 | 31000246 | 1 | S/S M4 X 10MM ALLEN HEAD BOLTS | [3] |
| 289 | | 1 | Tube 185mm long green | [6] |
| 295 | 31000259 | 1 | TUBE RELIEF 1 MTR | |
| 297 | | 1 | Screw M6 | [7] |

Part Notes:

- [1] - Bottle gasket
- [2] - Clean filter trio
- [3] - STOCK COVERS GUARANTEE
- [4] - Elbow 1/8"
- [5] - NO LONGER AVAILABLE
- [6] - Tube 185mm long green
- [7] - Screw M6



1



7



13



19



2



8



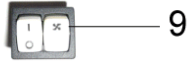
14



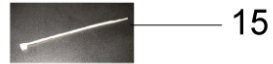
20



3



9



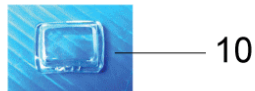
15



21



4



10



16



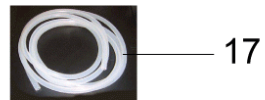
22



5



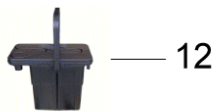
11



17



6



12



18

| No. | Part No. | Qty. | Description | Part Note |
|-----|----------|------|--------------------------------------|-----------|
| 01 | 31000201 | 1 | 1/4 INCH SPINDLE CONTROL KNOB | |
| 02 | 31000356 | 1 | HOSE ADAPTOR SEAL | |
| 03 | 31000358 | 1 | SOCKEL ADAPTOR | [1] |
| 04 | 31000205 | 1 | 5 LITRE BOTTLE 310-71144 | |
| 05 | 31000202 | 1 | 2.5L BOTTLE | |
| 06 | 31000203 | 1 | BLACK BOTTLE CAP | |
| 07 | 31000204 | 1 | HEYCO BUSH 01/11920/0 | [1] |
| 08 | 31000360 | 1 | CORD CLAMP INT STR/RELIEF 01/22647/0 | [1] |
| 09 | 31000428 | 1 | SWITCH | |
| 10 | 31000429 | 1 | SWITCH PROTECTION COVER | |
| 11 | 31000263 | 1 | MATRIX STEAM AND VACUUM ACC KIT | |
| 12 | 31000213 | 1 | WATER FILTRATION ASSY | |
| 13 | 31000444 | 1 | FRONT SOCKET ASS | |
| 14 | 31000206 | 1 | CLEAN FILTER TRIO | |
| 15 | 31000226 | 1 | WIRE TIE 100MM NATURAL | |
| 16 | 31000434 | 1 | TUBE 185MM GREEN | |
| 17 | 31000259 | 1 | TUBE RELIEF 1 MTR | |
| 18 | 31000431 | 1 | TOP MOTOR GASKET | |
| 19 | 31000432 | 1 | MIDDLE MOTOR GASKET | |
| 20 | 31000433 | 1 | BOTTOM MOTOR GASKET | |
| 21 | 31000386 | 1 | LOOM 36 NEW FOR STEAM ONLY | [1] |
| 22 | 31000383 | 1 | LOOM 31 EARTH WIRE | |

Part Notes:

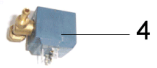
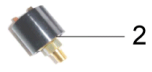
[1] - NO LONGER AVAILABLE

Single parts (2)

Nilfisk SO4500

2017.11.02

2013.04.02



| No. | Part No. | Qty. | Description | Part Note |
|-----|----------|------|---------------------------------------|-----------|
| 01 | 31000207 | 1 | THERMAL CUT-OUT AND T-STAT 180/260 | [1] |
| 02 | 31000208 | 1 | PRESSURE SWITCH | |
| 03 | 31000209 | 1 | RELEASE VALVE 11300 5/6 1/8BAR | |
| 04 | 31000210 | 1 | SOLENOID VALVE | |
| 05 | 31000228 | 1 | BOILER 1950W ELEMENT | |
| 06 | 31000394 | 1 | SCREW M4 X 6 PAN POZI TAPTITE | |
| 07 | 31000395 | 1 | HOSE CONNECTOR 1/8 INCH | [1] |
| 08 | 31000396 | 1 | IDLE RING NUT 1/8 INCH | |
| 09 | 31000229 | 1 | VARI STEAM VALVE | |
| 10 | 31000397 | 1 | BRAIDED EPDM TUBE 5MM ID 10MM OD X 1M | |
| 11 | 31000361 | 1 | ILME FEMALE POWER SUPPLY | |
| 12 | 31000230 | 1 | WHITE DIPPER | [2] |
| 13 | 31000399 | 1 | SCREW M4 X 25 PAN POZI | |
| 14 | 31000400 | 1 | NUT M5 HEX PRESSES BRASS 3MM | |
| 15 | 31000231 | 1 | DEARAETOR DEA500 BRASS | |
| 16 | 31000401 | 1 | BOTTLE SEAL NUT | [3] |
| 17 | 31000402 | 1 | SPIGOT BOTTLE SEAL | |
| 18 | 31000232 | 1 | INLET RUBBER ELBOW | |
| 19 | 31000403 | 1 | SUCTION SOCKET ASSY | |
| 20 | 31000404 | 1 | GASKET | [1] |
| 21 | 31000405 | 1 | WIRE PROTECTING GROMMENTS | |
| 22 | 31000211 | 1 | PUMP EX5 W/BRASS | |
| 23 | 31000363 | 1 | RUBBER MOUNTING AUTOFILL PUMP | |
| 24 | 31000233 | 1 | PLASTIC HANDLE WINGNUT 34723 | |
| 25 | 31000408 | 1 | CASTER NO BRAKE | |
| 26 | 31000234 | 1 | FILTER SOCK | |
| 27 | 31000409 | 1 | BOLT M5 FOR BOILER | |
| 28 | 31000410 | 1 | NUT M5 FOR BOILER | |
| 29 | 31000412 | 1 | NUT STAINLESS STEEL M4 | |
| 30 | 31000212 | 1 | MOTOR 850W | |

Part Notes:

- [1] - STOCK COVERS GUARANTEE
- [2] - ALTERNATIVE USE 31000244
- [3] - NO LONGER AVAILABLE



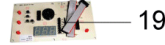
1



7



13



19



25



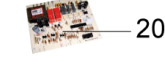
2



8



14



20



26



3



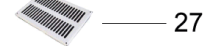
9



15



21



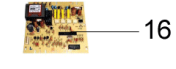
27



4



10



16



22



28



5



11



17



23



29



6



12



18



24

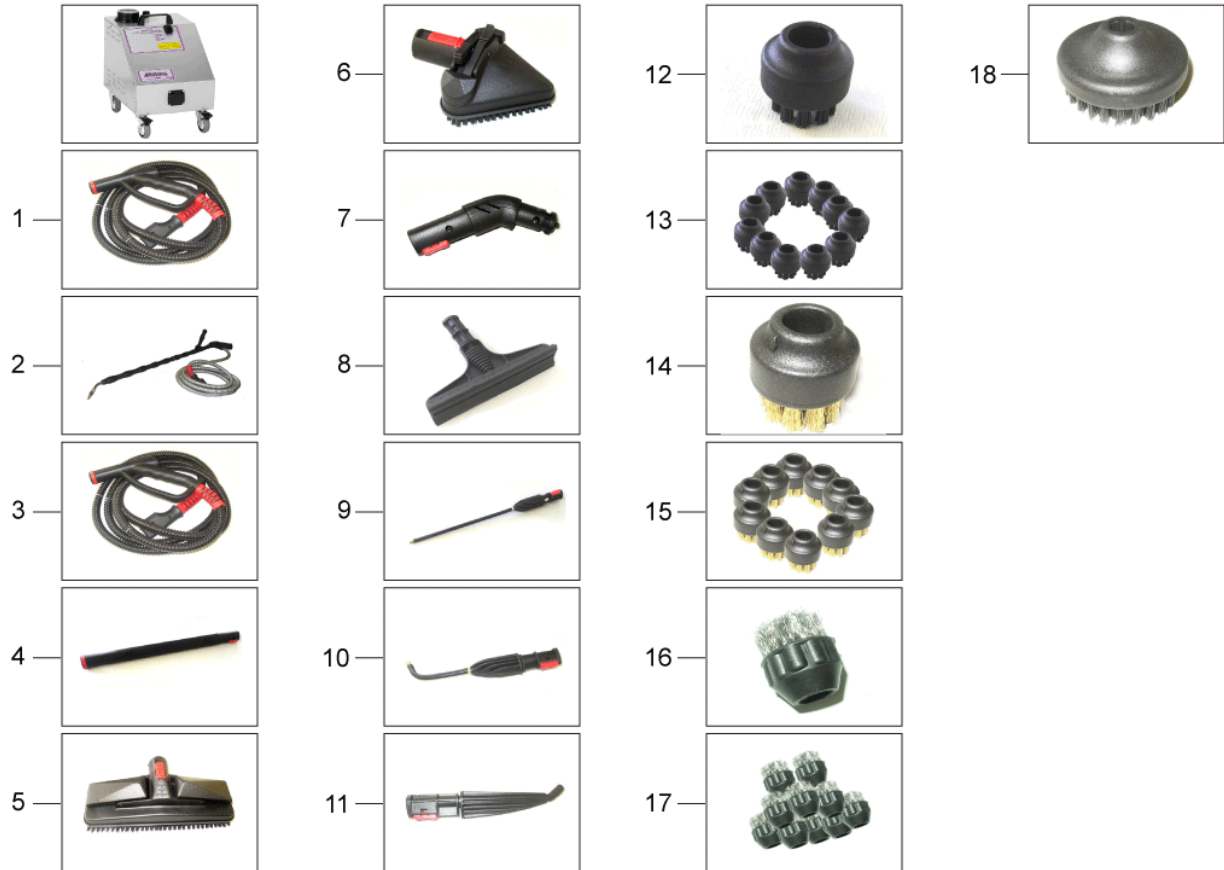


30

| No. | Part No. | Qty. | Description | Part Note |
|-----|----------|------|--------------------------------------|-----------|
| 01 | 31000235 | 1 | CASTOR WITH BRAKE | |
| 02 | 31000236 | 1 | INLINE WATER FILTER | |
| 03 | 31000237 | 1 | BLUE DIPPER | |
| 04 | 31000214 | 1 | AC LINE FILTER W/NUT AND WASHER | |
| 05 | 31000239 | 1 | BOILER 3000W | |
| 06 | 31000240 | 1 | P/RELEASE VALVE 11BAR 551/C | |
| 07 | 31000241 | 1 | CAPILLARY PRESSURE GAUGE COPPER COIL | |
| 08 | 31000242 | 1 | NON RETURN VALVE 503-1/8 | |
| 09 | 31000243 | 1 | PRESSURE GAUGE | |
| 10 | 31000413 | 1 | PLUG 3/8 INCH | |
| 11 | 31000215 | 1 | MAINS ON/OFF SWITCH W. LIGHT | |
| 12 | 31000216 | 1 | HANDLE CONTROL SWITCH | [1] |
| 13 | 31000244 | 1 | RED DIPPER | |
| 14 | 31000245 | 1 | LEMON CLIP - 2 EARED CLAMP | |
| 15 | 31000246 | 1 | S/S M4 X 10MM ALLEN HEAD BOLTS | [2] |
| 16 | 31000217 | 1 | MAIN PCB POWER BOARD 4 BAR | [3] |
| 17 | 31000248 | 1 | VARISTREAM VALVE | |
| 18 | 31000218 | 1 | CORD 3W 10M H05V2V2-F 1.5MM2 UK | [1] |
| 19 | 31000219 | 1 | DISPLAY BOARD PCB W/RIBBON | |
| 21 | 31000417 | 1 | 1.3MM PLUMBING RESTRICTION | |
| 22 | 31000223 | 1 | SOLENOID VALVE | |
| 23 | 31000224 | 1 | PRESSURE SWITCH XP111 | |
| 24 | 31000254 | 1 | TURBULAR HANDLE | |
| 25 | 31000418 | 1 | BOILER BRACKET 4 BAR BOILER | [1] |
| 26 | 31000255 | 1 | HANDLE BLACK | |
| 27 | 31000419 | 1 | FILTER DOOR STAINLESS STEEL | |
| 28 | 31000421 | 1 | 32MM HOSE X 205MM WITH CUFF | |
| 28 | 31000422 | 1 | 32MM HOSE X 260MM WITH CUFF | |
| 28 | 31000420 | 1 | 32MM HOSE X 160MM WITH CUFF | [2] |
| 29 | 31000423 | 1 | 32MM HOSE X 540MM WITH CUFF | |
| 30 | 31000424 | 1 | 32MM HOSE X 780MM WITH CUFF | |

Part Notes:

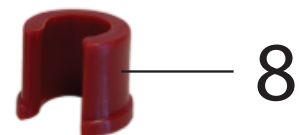
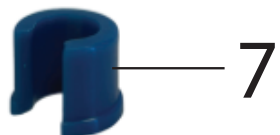
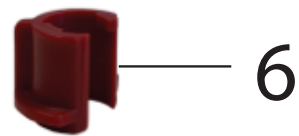
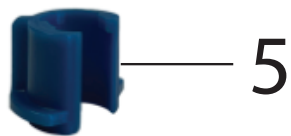
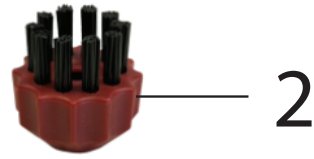
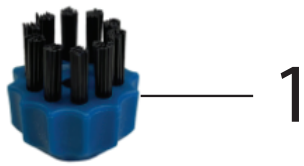
- [1] - NO LONGER AVAILABLE
- [2] - STOCK COVERS GUARANTEE
- [3] - For MD4500, SDV4500, SO4500



| No. | Part No. | Qty. | Description | Part Note |
|-----|-----------|------|--|-----------|
| | 450000086 | 1 | TROLLEY FOR SO 4500 | |
| 01 | 450000056 | 1 | MATRIX 4 METRE HOSE FOR STEAM ONLY | [1] |
| 02 | 31000427 | 1 | LANCE GUN STAINLESS STEEL INCL 4M HOSE | |
| 03 | | 1 | Not available | |
| 04 | 450000057 | 1 | EXTENSION TUBE | [1] |
| 05 | 450000058 | 1 | FLOOR BRUSH | [1] |
| 06 | 450000059 | 1 | TRIANGULAR BRUSH | [1] |
| 07 | 450000060 | 1 | LARGE BRUSH ELBOW | |
| 08 | 450000061 | 1 | WINDOW SQUEEGEE | [1] |
| 09 | 450000062 | 1 | LONG NOZZLE | |
| 10 | 450000063 | 1 | CURVED NOZZLE | [1] |
| 11 | 450000064 | 1 | DETAIL BRUSH NOZZLE | [1] |
| 12 | | 1 | Not available | |
| 13 | 450000065 | 1 | DETAIL NYLON BRUSH IN 10S | [1] |
| 14 | | 1 | Not available | |
| 15 | 450000066 | 1 | DETAIL BRASS BRUSH IN 10S | [1] |
| 16 | | 1 | Not available | |
| 17 | | 1 | Not available | |
| 18 | 450000067 | 1 | 55MM ROUND BRUSH | [1] |

Part Notes:

[1] - PRUNED - NO REPLACEMENT



| No. | Part No. | Qty. | Description | Part Note |
|-----|-----------|------|---------------------------------|-----------|
| 1 | 450000070 | 1 | NYLON BRUSH BLUE - STEAM ONLY | |
| | 450000071 | | NYLON BRUSH GREEN - STEAM ONLY | |
| 2 | 450000072 | 1 | NYLON BRUSH RED - STEAM ONLY | |
| 3 | 450000074 | 1 | NYLON BRUSH BLUE | |
| | 450000073 | | NYLON BRUSH YELLOW - STEAM ONLY | |
| | 450000075 | | NYLON BRUSH GREEN | |
| 4 | 450000076 | 1 | NYLON BRUSH RED | |
| | 450000077 | | NYLON BRUSH YELLOW | |
| 5 | 450000078 | 1 | LOCKING CLIP BLUE | |
| | 450000079 | | LOCKING CLIP GREEN | |
| | 450000081 | | LOCKING CLIP YELLOW | |
| 6 | 450000080 | 1 | LOCKING CLIP RED | |
| 7 | 450000082 | 1 | CLIP BLUE | |
| | 450000083 | | CLIP GREEN | |
| 8 | 450000084 | 1 | CLIP RED | |
| | 450000085 | | CLIP YELLOW | |
| | 450000049 | | CREVICE TOOL | |

