

Go Fish!

By
Quilting Confections
for

Row by Row Experience Shop Hop 2015

Background	Bright Fish	Shadow Fish	Plant Life
18" by width of fabric. A cutting diagram is included	6" square for each of the 5 fish	6" square black	6" square of 2 different greens
For each fish block: 3 – 2 ½" squares 4 – 4 ½" squares cut and number filler pieces.	For each fish cut: 3 – 2 ¼" squares 1 – 2 ½" square	Trace your fish onto fusible web, fuse to the 6" square and cut several fish in different sizes.	Trace grasses onto fusible web, fuse to the green squares, cut out and use in whatever amount and placement you like.

**** We recommend that you soak the dark blue and black fabrics to release any excess dye.**

Each fish is pieced into a background, making a square that is 6 ¾". Add the numbered pieces to the top or bottom of the block as shown.

To make one block: Fold the (3) 2 ¼" "fish" squares in half diagonally, wrong sides together. Press. Place this piece on a 2 ½" background square, matching the corner. Sew it to the background square on two sides, using a scant seam.

Pull back on the fold to create a curved line. Press with a hot/dry iron. Don't fold back right to the edge, but leave the seam allowance with less bulk. Top stitch, creating a curved fin for your fish. Make a 4-patch using the 2 ½" fish fabric and three background squares with fins added.

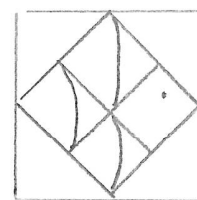
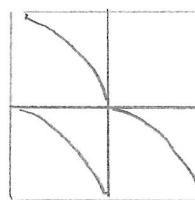
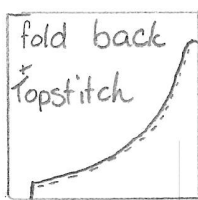
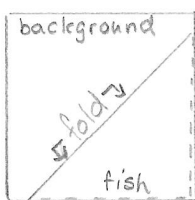
Cut the 4 ½" background squares in half diagonally and sew one to opposite sides of the fish block. Press to the background and cut off the excess at the ends. Then add the remaining sides, press to the fish and square up to 6 ¾".

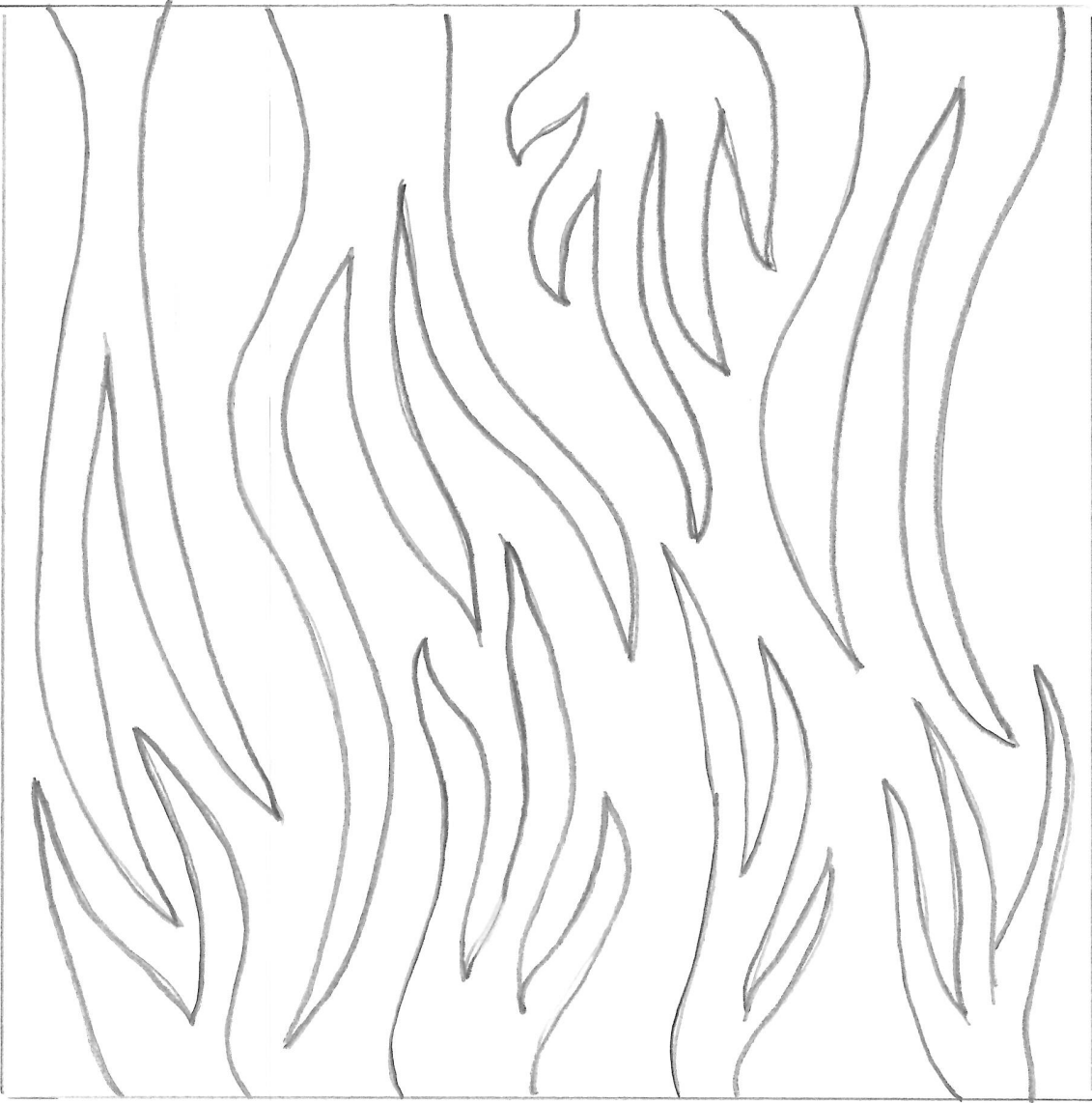
Make all of your fish blocks, lay them out in the colour order you prefer, then add fabric to the top or bottom as per the layout diagram.

Sew all the blocks and spacer strips together and press well.

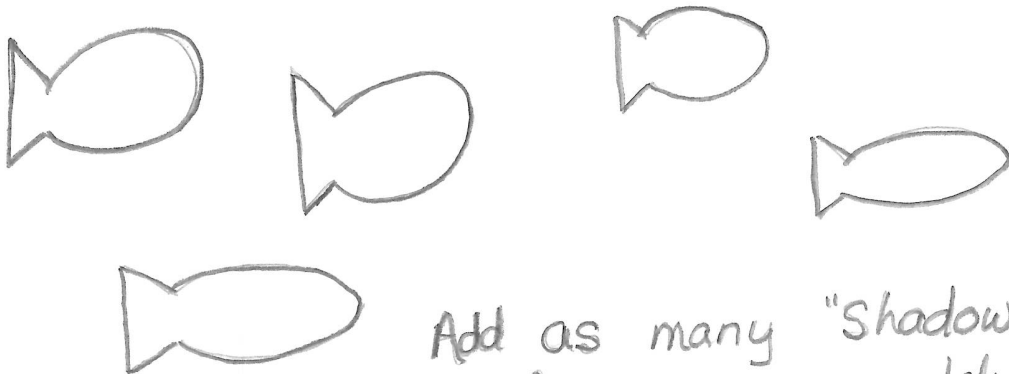
Place the shadow fish and the plant life as desired.

Your row should be 8 ¾" by 37 ¾". Trim it to fit your 36 ½" rows.





Plant life - use two fabrics + add as desired



Add as many "Shadow"
fish as you like

