

ASPA-400

Smart Air Purifier



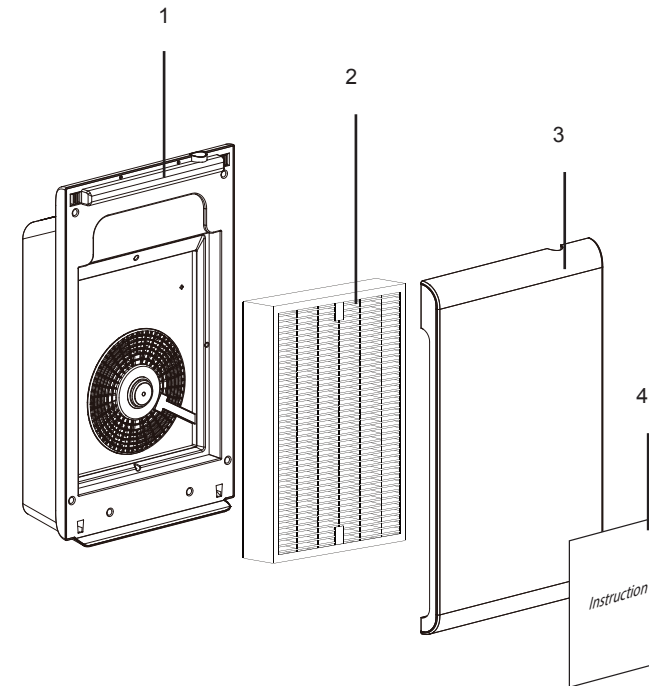
ASPEN™



Table of Contents

What's in the Box	1
Safety Precautions	2
Technical Specifications	3
LED Information	4
Setup / Getting Started	6
Setup / Download Aspen Home App	8
Setup / Pairing Your Device	9
Setup / Inside The App	11
How To Replace The Filter	13
Care & Maintenance	15
FAQ	17
FCC Statement	19
Warranty	20




What's in the Box






1. Air Purifier
2. 3 in 1 HEPA Filter
3. Front Panel
4. Instruction Manual

Safety Precautions

The following safety precautions and instructions must be read carefully and observed the product is used!

	The behaviors with this sign must be prohibited, otherwise it may cause product damage or endanger the user's personal safety.
	The behaviors with this sign must be operated in strict accordance with the requirements, otherwise it may cause product damage or endanger the user's personal safety.
	The behaviors with this sign must be paid attention to, otherwise it may cause product damage or other losses due to improper operation.

	Please do not touch the power plug with wet hands.		Please regularly clean the machine
	Please do not block the air inlet/outlet.		Only the 120V power sockets are
	Please do not use the machine in any place with much oil fume or high humidity.		Please do not put it close to or on any heat source (such as a fire-place, stove or a place with flammable gases).
	Please do not rinse the high-efficiency composite filter with water.		Please be careful when cleaning the
	This machine shall not be used by people with disabilities, perceptual disturbance or dysgnosia or children alone, unless they use it under the supervision and guidance of safety director on the site.		Please do not unplug the power cord from the power socket when cleaning the air purifier or leaving it unused. Otherwise, it may cause electric shock due to poor insulation or fire due to short circuit.

Technical Specifications

Product specifications





Model	ASPA-400
Related voltage frequency	120V~/60Hz
Rated power	60W
Rated current	0.85A
CADR (Particulate matter)	232CFM
Noise	56dB
Net weight	6.3kg / 14lbs
Gross weight	8.4kg / 18.5lbs
Product size	382x200x649mm / 1.25' x 0.65' x 2.13'
Packaging Size	475x285x765mm / 1.5' x 1' x 2.51'
Work environment	Temperature: 14°F ~ 104°F(-10°C ~ -40°C) humidity: ≤ 95%RH

Real-time display of air quality conditions

PM2.5 value	Air quality	PM2.5 Air quality indicator	Wind speed gear
0-12	Excellent	Green	Speed gear
13-35	Good	Blue	1
36-55	Medium	Yellow	2
>55	Poor	Red	3

LED Information



LED Ring Color	Air Quality
 Green	Excellent Air Quality
 Blue	Good Air Quality
 Yellow	Moderate Air Quality
 Red	Bad Air Quality

LED Information



On/Smart(Auto)
Tap once to turn on the unit
and set it to Smart Mode
(Glowing LEDs)



Low
Tap second time to set
to Low speed
(Single Solid LED)



Medium
Tap third time to set to
Medium speed
(2 Solid LEDs)



High
Tap set to set to High speed
(3 Solid LEDs)

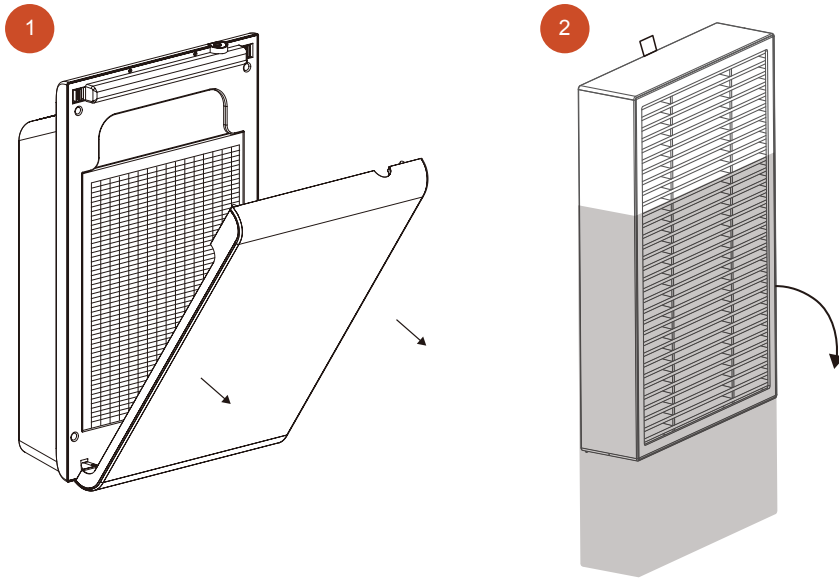


Turn Off/Standby
Tap and hold for 3 seconds till
the power icon turns red.

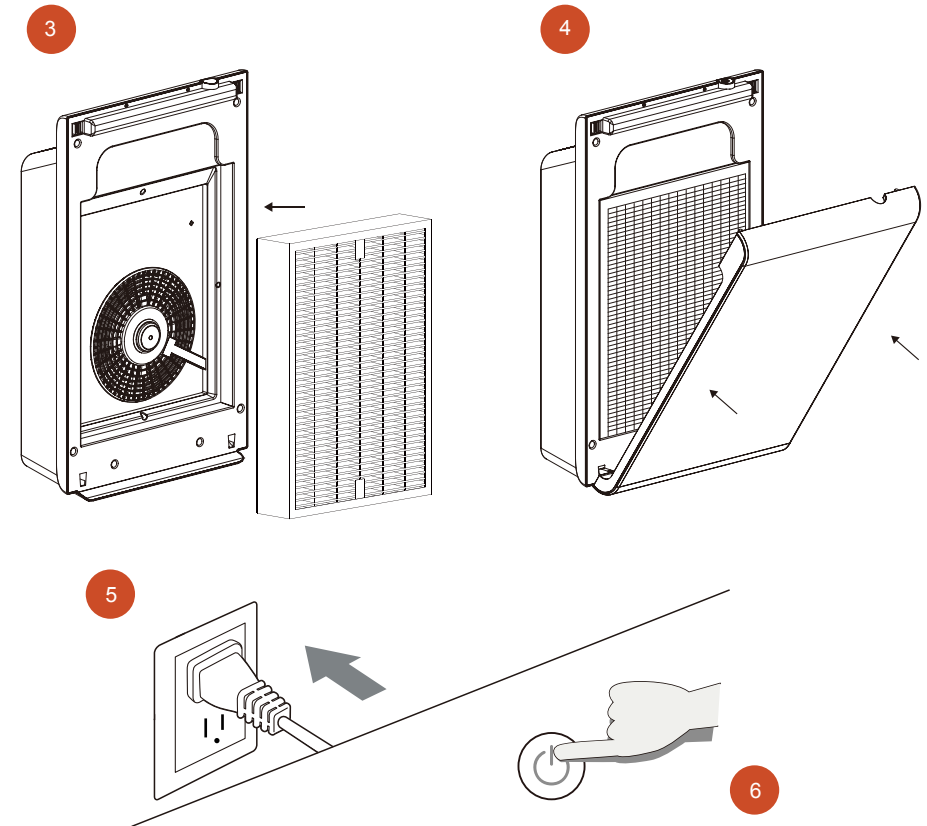


Replace Filter
Flashing red light will indicate
new filter is needed

Setup / Getting Started



Setup / Getting Started

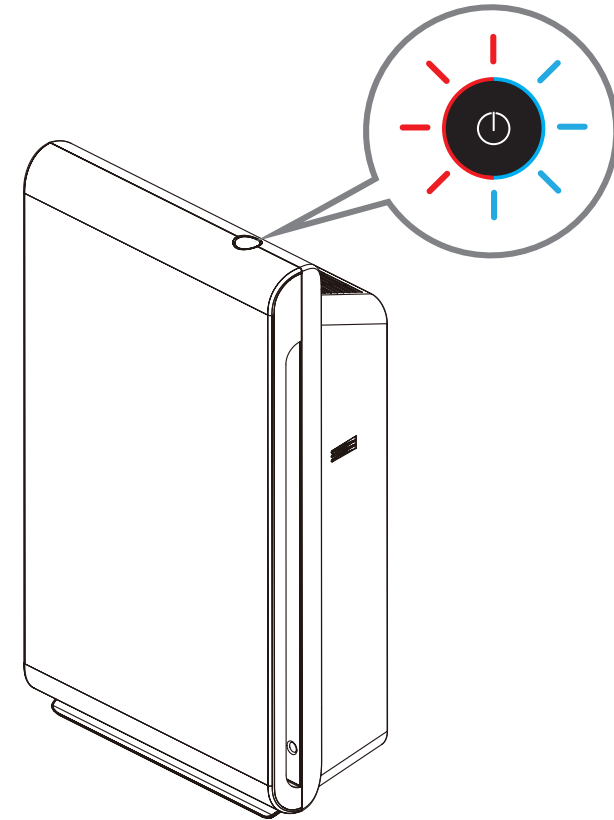


Setup / Download Aspen Home App



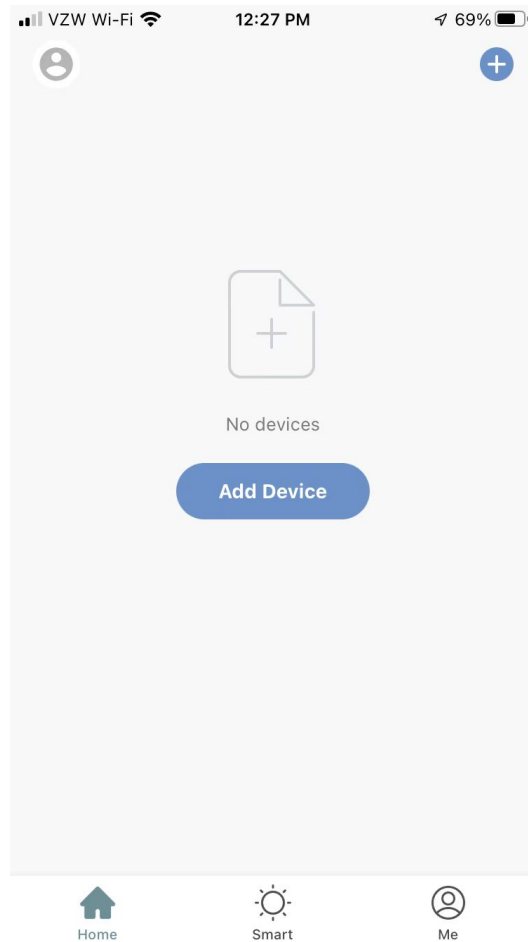
- Download **the Aspen Home App** from the Apple App Store or Google Play Store.
- **Create a new account** with your email address or log-in to your existing account.

Setup / Pairing Your Device



1. Press and hold the control button for 7 – 10 seconds to start pairing (Ignore first beep around 3 seconds)
2. The device will beep a few times and the LED will begin to flash red and blue. This means pairing mode is now active and you can pair to the app on your phone.
3. Follow the instructions inside the app to complete the pairing process

Setup / Pairing Your Device



4. Open the App from the home screen of your phone
5. Tap the “Add Device” button
6. Select the device you want to pair with and follow on screen instructions to complete pairing
7. You are now finished pairing your device. You can begin to control the device through the Aspen Home app.

Setup / Inside The App

Inside the app you will be able to see your air quality, adjust your fan speed, set a schedule to turn the fan on and/or off, and reset your filter life after replacement



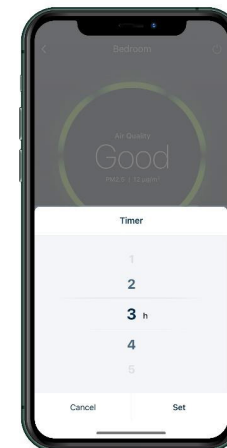
Air Quality Color

know your indoor air quality right in your phone with color indicator



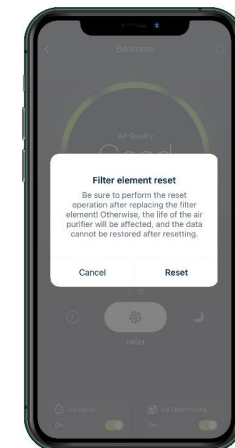
Smart Auto Speed

Auto fan speed changes according the indoor air quality



Timer

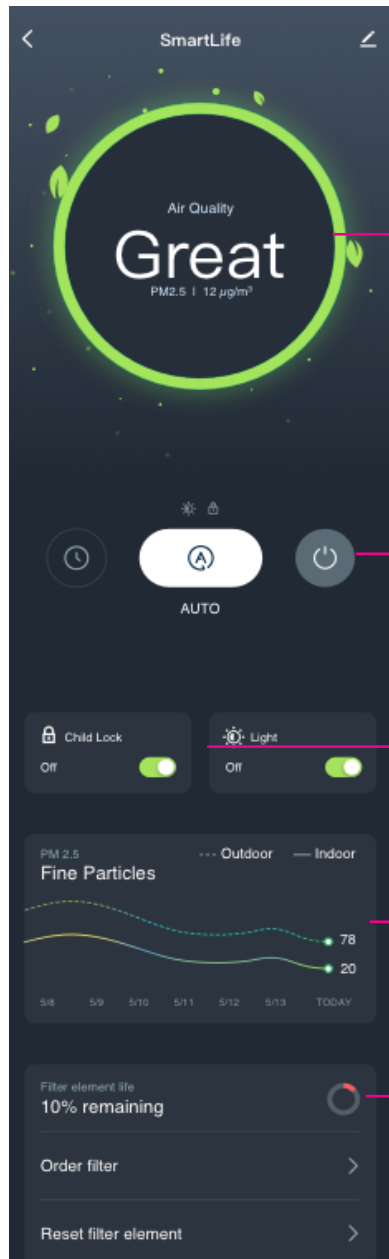
Conveniently set timer anywhere using Aspen Home App



Filter Reset

Reset filter in App without a hassle finding a pin to reset

Setup / Inside The App



See what your air quality is like

Turn On/Off Fan, control fan speed, and setup a schedule

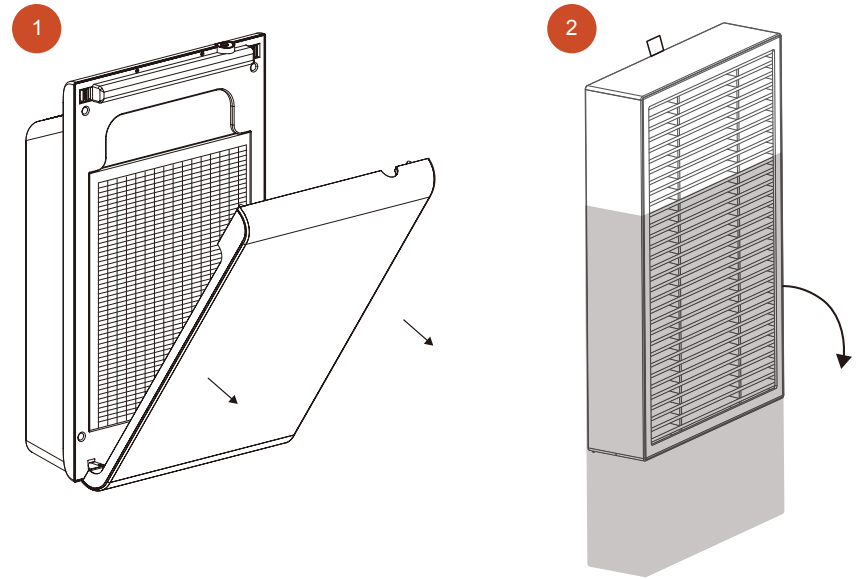
Turn On/Off the child lock setting and the device LED light

A 7 Day line chart shows the Fine particles levels in the past week

Check your filter life and reset your filter after installing a new filter and order a new filter.

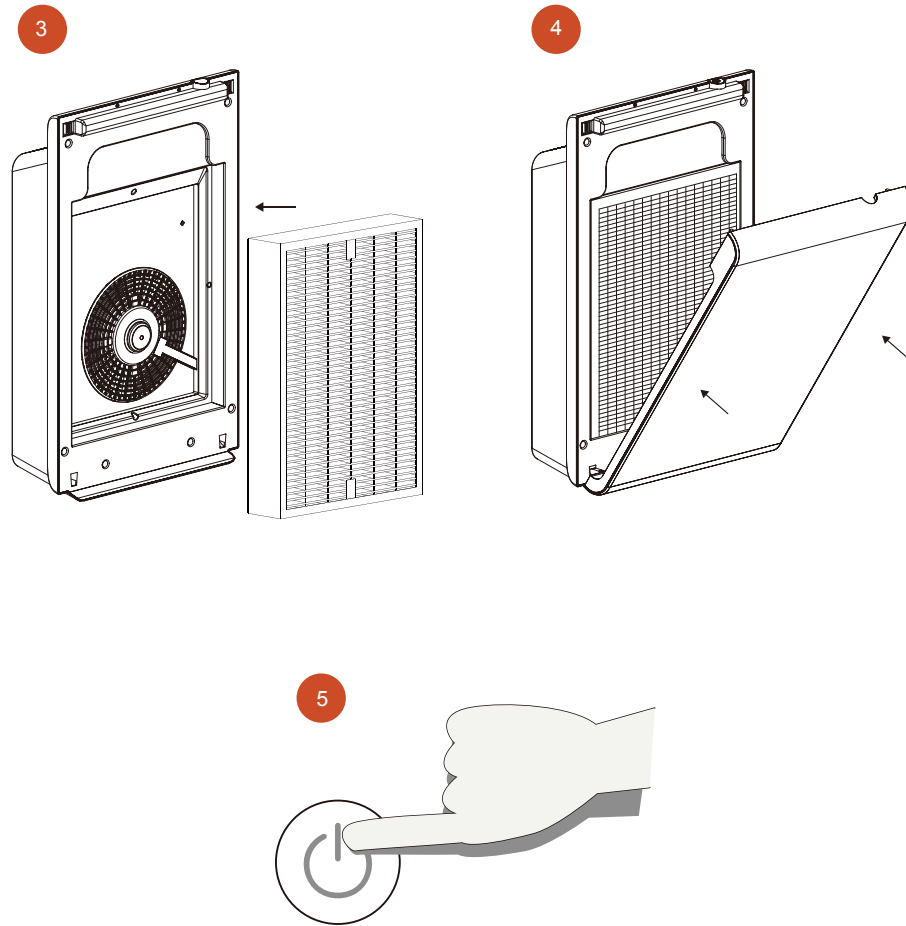
Don't know when to order a new filter, check out our filter subscription service and let us take care of all your new filters.

How To Replace The Filter



1. Pull the panel off the device by pulling from the top.
2. Remove the new filter from plastic wrapping

How To Replace The Filter



3. After plastic wrapping is removed from the filter, place the filter back inside the device.
4. Place the panel back on top.
5. Push the control button to power on the unit.
6. Your new filter is ready to be enjoyed

Care & Maintenance

Cleaning Instruction

To avoid scratching the control panel, do not use abrasive/ caustic cleaning solutions or scrubbing pads. With the unit unplugged, dampen a clean towel lightly with soap and water to clean the control panel, then dry gently with a soft cloth or paper towel. Glass cleaner (e.g. Windex) is also OK. To avoid damaging electronic components, DO NOT allow liquid to seep into the unit.

Prefilter Cleaning

The white mesh layer on the front of the filter, known as the prefilter, captures large dust and hair. This layer is attached to the True HEPA filter. This prefilter can be vacuumed in place to maintain efficient operation of the unit.

Care & Maintenance

Replacing The Filter

The Filter Indicator has four lights: Green, Blue, Yellow, and Red. The Green light will be illuminated for most of the life of the filter. The yellow light will come on shortly before your filter should be re-placed. This is the ideal time to order a new filter.

You may order a new filter

at www.theaspen.com/accessories or by calling (877) 365-3464

The Red light will be illuminated when it is time to replace the filter.

The filters used in Aspen Air Purifiers are not designed to be washed, cleaned, or otherwise reused. Over time, the filters become overloaded with particles, decreasing their filtration performance. We recommend regular filter replacements to extend the life of your air purifier and maximize performance.

FAQ

Why doesn't the device turn on?

Make sure the device is properly plugged into an electrical socket and sure the filter has been installed correctly and the panel is secure

How do I reset the filter indicator lights? I put in a new filter but the red light is still illuminated.

Please note that the filter can only be reset in the app. After replacing the filter, follow the instructions in the app to reset the filter life. This will turn the light green.

Why isn't any air coming out or the device is making an unusual sound?

Please check to make sure the filter has been removed from the plastic packaging or there isn't any objects blocking the intake of the air flow.

How do I find out what electrical specifications my unit needs?

Please refer to the rating label on the back of the unit. Here you will find your unit's voltage:

hertz, amps, and outlet requirements.

FAQ

Can I clean the filter?

The white mesh layer on the front of the filter, known as the prefilter, captures large dust and hair. This prefilter can be vacuumed in place. This will maintain efficient operation of the device. No other layers or parts of the filter can be washed, cleaned, or otherwise reused. Please replace the filter regularly to maintain optimal performance.

What information do I need when I contact customer service for warranty?

Please refer to the rating label on the back of the unit. This rating label has your unit's serial number and other important information we need to assist you.

I have an issue not listed in this manual

Please visit www.theaspen.com, send us a message at service@theaspen.com or call (877) 365-3464 during business hours. A customer service representative will respond to your inquiry in a timely manner.

FCC Statement

This device complies with part 15 of the FCC Rules. Operation is subject to the following two conditions: (1) This device may not cause harmful interference, and (2) this device must accept any interference received, including interference that may cause undesired operation.

NOTE: This equipment has been tested and found to comply with the limits for a Class B digital device, pursuant to part 15 of the FCC Rules. These limits are designed to provide reasonable protection against harmful interference in a residential installation. This equipment generates, uses and can radiate radio frequency energy and, if not installed and used in accordance with the instructions, may cause harmful interference to radio communications. However, there is no guarantee that interference will not occur in a particular installation. If this equipment does cause harmful interference to radio or television reception, which can be determined by turning the equipment off and on, the user is encouraged to try to correct the interference by one or more of the following measures:

- Reorient or relocate the receiving antenna.
- Increase the separation between the equipment and receiver.
- Connect the equipment into an outlet on a circuit different from that to which the receiver is connected.
- Consult the dealer or an experienced radio/TV technician for help.

FCC ID: 2A6AP-ASPA-400

Warranty

ONE YEAR LIMITED WARRANTY

The Company hereby warrants to the original retail purchaser of this product that, should this product or any part thereof, under normal use and conditions, be proven defective in material or workmanship within one year and 90 days labor from the date of original purchase, such defect(s) will be repaired or replaced with a reconditioned product (at the Company's option) for parts and repair labor. This limited warranty is the purchaser's exclusive remedy for any such defect(s).

To obtain repairs or replacement within the terms of this warranty,

Please visit www.theaspen.com or

Contact us at **1-877-365-3464**

Open **Mon-Fri 8am-5pm Pacific Time**

Proof of warranty coverage (i.e. – dated bill of sale) is required

This Warranty does not apply to any product or part thereof which, in the opinion of Company, has suffered or been damaged through alteration, improper installation, mishandling, misuse, neglect, accident, or by removal or defacement of the factory serial number/bar code label(s). The opinion of the Company with respect to this matter shall be final.

Warranty

THE EXTENT OF THE COMPANY'S LIABILITY UNDER THIS WARRANTY IS LIMITED TO THE REPAIR OR REPLACEMENT OF THE PRODUCT AS PROVIDED ABOVE, AND, IN NO EVENT, SHALL COMPANY'S LIABILITY EXCEED THE PURCHASE PRICE PAID BY THE PURCHASER FOR THE PRODUCT.

THIS WARRANTY IS IN LIEU OF ALL OTHER EXPRESS WARRANTIES OR LIABILITIES. ANY IMPLIED WARRANTIES, INCLUDING ANY IMPLIED WARRANTY OF MERCHANTABILITY, SHALL BE LIMITED TO THE DURATION OF THIS WRITTEN WARRANTY. ANY ACTION FOR BREACH OF ANY WARRANTY HEREUNDER, INCLUDING ANY IMPLIED WARRANTY OF MERCHANTABILITY, MUST BE BROUGHT WITHIN A PERIOD OF 12 MONTHS FROM THE DATE OF ORIGINAL PURCHASE. IN NO CASE SHALL THE COMPANY BE LIABLE FOR ANY CONSEQUENTIAL OR INCIDENTAL DAMAGES FOR BREACH OF THIS OR ANY OTHER WARRANTY EXPRESS OR IMPLIED WHATSOEVER.

No person or representative is authorized to assume for the Company's any liability other than expressed herein in connection with the sale of this product. Some jurisdictions do not allow limitations on how long an implied warranty lasts or the exclusion or limitation of incidental or consequential damages, so the above limitations or exclusions may not apply to you. This warranty gives you specific legal rights and you may also have other rights, which vary from jurisdiction to jurisdiction



Copyright© 2022 Aspen Appliances Inc. All rights Reserved.

ASP-400 June 15, 2022