

Powerful A3 black & white
multifunction printing

IM 2500

IM 3500

IM 4000

IM 5000

IM 6000

☑ Copier ☑ Printer ☑ Facsimile ☑ Scanner



A range of intelligent devices for all your office printing needs

The IM 2500, IM 3500, IM 4000, IM 5000 and IM 6000 are designed to effortlessly boost office productivity thanks to features such as high scanning speeds, RICOH Always Current Technology and an extensive range of finishing options. Suitable for organizations of all sizes across multiple industries, the entire range enables more streamlined and efficient document workflows to adapt to changing office requirements without compromising on quality and productivity. With these intelligent devices in place, printing is smarter, faster and always up-to-date with the very latest technological updates and advancements from Ricoh. This is the go-to range that delivers consistent results whatever your printing or scanning requirements may be. With different models to choose from, you're guaranteed to find a multifunction device that 100% meets your needs.

- Work smarter – access new applications, features and upgrades whenever you need them
- Work your way – wide range of finishing options ranging from internal finisher to booklet finisher
- Work faster – scan between 120 and 240 impressions per minute in B&W and color
- Work securely – multi-layered security for risk-proof document management

This range of intelligent black and white multifunction devices is powerful, reliable and constantly updated with the latest technology to provide you with high-quality printing and scanning — any time, any place, anywhere.

Ricoh intelligent devices: Scalable. Secured. Sustainable. Simple.

Technology that never becomes dated

With our range of intelligent devices, you can benefit from the outstanding quality, reliability and security that you can expect from Ricoh — plus on-demand access to the latest technology.



Always up-to-date

Simply add software solutions, applications and cloud services as you need them to optimize your document management workflows, helping your people work smarter, faster and more securely.

RICOH Always Current Technology allows new features, applications and upgrades to be downloaded and installed directly to your device.

Technology and security, made easy

Connecting your Ricoh intelligent device to external cloud services and installing apps with workflow capabilities is easy. Convert paper-based information to digital by scanning directly to services such as Dropbox™ or SharePoint™ or scan direct to folders on your corporate network. Get quick access to a range of 'scan-to' functionality as new services become available.

Prevent your data and printing from being compromised with multi-layered security features that make document management risk-proof.



Expert document management and outstanding quality

Get sharp text and graphics without saturation using Ricoh's advanced printing technologies that deliver the best quality print results every time.

Straightforward printing for busy offices

Streamlined workplaces require streamlined systems

Working environments are becoming more streamlined. From apps and smart devices to virtual meetings and data accessed via cloud environments, every element of office working is evolving. Rightfully, people expect their office equipment to facilitate this new way of working.

The latest devices, with their intuitive features, are being continuously updated to incorporate up-to-the-minute developments — catering to all requirements while keeping pace with these technological developments.



About the range — at a glance

A3 B&W intelligent devices are designed to boost office productivity without complex user interfaces, thanks to the Smart Operation Panel.

With features such as high scanning speeds and an extensive range of finishing options, this improved productivity is also effortless.

All the way up to a blistering 60 pages per minute, the range perfectly tailors to a wide range of business needs and sectors. Along with the print speed performance you need, the range offers impressive scan speeds between 120 – 240 ipm in B&W and color.

Industry-leading suite of finishing options

The wide variety of paper support and finishing options enable you to configure your device to your needs.

Booklet finishers can print booklets and magazines, while the hybrid finisher offers staple-free binding.

Finishers can punch and staple. And with the multifolding unit, you can fold leaflets.

The different paper options offer additional paper capacity reducing refill jobs.



Making every day tasks easier

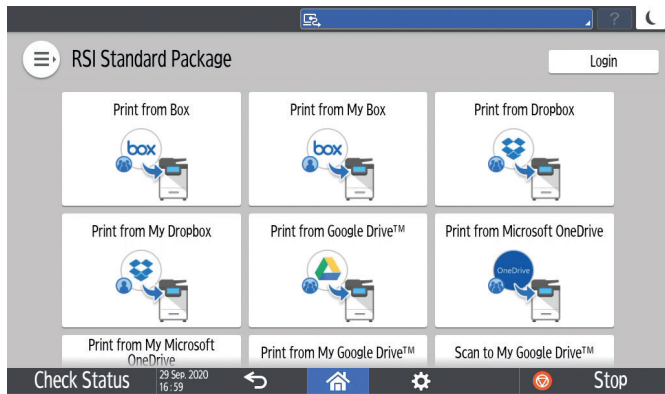
- The latest technology: RICOH Always Current Technology provides access to required applications, the latest features and upgrades.
- Total integration: RICOH Smart Integration provides cloud-based apps and a cohesive document workflow across multiple devices.
- Productivity: The intuitive Smart Operation Panel makes using the devices quick and easy and workflows more intuitive.
- Safety: RICOH Smart Device Connector enables touchless operation of the MFP, allowing users to control all print, copy, scan and fax functions from Android and iOS devices smartly and safely.

About those industry-leading features – in more detail...

RICOH Always Current Technology

Always Current Technology delivers timely solutions to meet your changing needs. With RICOH Always Current Technology enabled, the capabilities of your Ricoh intelligent device continually adapt to the changing demands of your workforce.

Available on most of Ricoh's intelligent devices, it quietly and continually supports you, automatically downloading software updates. And, just like your smartphone, it prompts you to activate the update at your convenience. The process is simple and secured.



RICOH Smart Integration Platform

RICOH Smart Integration helps maximize your MFP investment by providing document workflow automation right from your device. Users will be able to digitize and route documents seamlessly, allowing them to work faster, smarter and more cost effectively.

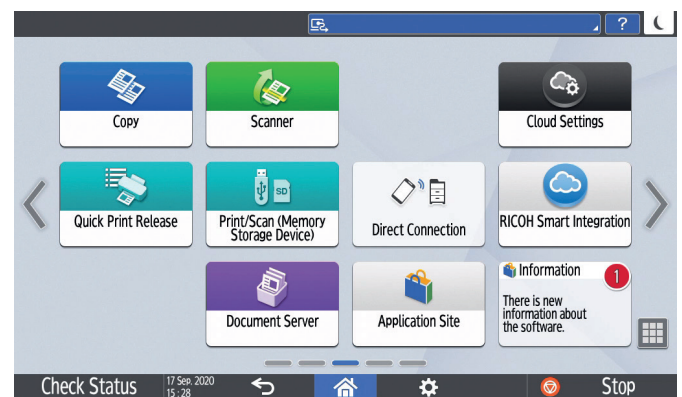
Whether the document destination is a folder, an email recipient, a fax number, in the cloud or local — RICOH Smart Integration helps get the document to the right location, in the right file format, with the right file naming.

RICOH Smart Integration is provided through a simplified subscription model, making it quick and easy to get started, and you have immediate access to the latest features without high upfront costs. The capabilities available through subscription are growing rapidly, and new workflow integrations are completed by Ricoh's committed team of developers on an on-going basis.

Smart Operation Panel

With our latest 10.1" Smart Operation Panel, complete with soft-key operation, your Ricoh multifunction printer is even easier to touch, swipe and get the job done, thanks to a range of helpful features — including a customizable home screen and full internet browser capability.

When you want to simplify and improve document processes in your office, Ricoh's new range of A3 B&W intelligent MFPs — featuring Smart Operation Panel technology — brings you high quality printing, high efficiency workflows and low running costs.



Smart Device Connector

Smart devices are seeing greater and greater use on the business scene, but procedures for connection to office equipment are complex and still by no means stress-free. With our Smart Device Connector, those complex procedures become simple, and you can seamlessly connect to various smart devices.

You can also operate a multifunction product by NFC or QR code. Simply hold the smart device over it, and you're connected.

Secured. Sustainable. Simple.



Secured: Stay current with the latest security tools

Cyber security is a growing threat. Prevent your data and printing from being compromised with multi-layered security features that risk-proof document management.

Ricoh's Always Current Technology not only ensures you benefit from all the latest features and apps, it also ensures your device is always running the latest security update too.

Sustainable: Improve your carbon footprint

Since Kiyoshi Ichimura founded Ricoh's principles in 1946, we continue to leverage the power of business through incorporating social and environmental sustainability — undertaking a range of initiatives in keeping with our sustainability message: Driving Sustainability for Our Future.

Sustainability is at the heart of everything we do. Ricoh MFPs are designed to be energy efficient. It's as important to us as it is to you that any device we develop leaves a small carbon footprint on the environment. We also have a deep commitment to minimizing the environmental impact of our devices and workflow, which is why we continually work to meet the global standards for energy and resource efficiency, as defined by EPEAT®* and ENERGY STAR®. Ricoh devices have low energy consumption levels, in both Typical Electricity Consumption (TEC) and actual power consumption.

*EPEAT is only applicable in the USA.

Simple: Cut your printing costs

Organizations are under pressure to keep company-wide costs down. Consolidate your printing equipment down into one highly productive and reliable fleet.

B&W printing is notable for reducing printing costs and, alongside quality and efficient scanning, will reduce paper usage overall.

We also offer a selection of cost control software products — from tracking energy, paper and consumables consumption to ensuring that the most efficient settings have been activated across all your print devices.



RICOH IM 2500/IM 3500/IM 4000/IM 5000/IM 6000

MAIN SPECIFICATIONS

	RICOH IM 2500	RICOH IM 3500	RICOH IM 4000	RICOH IM 5000	RICOH IM 6000
GENERAL					
Warm-up time	18 seconds	18.6 seconds	17.9 seconds	19.1 seconds	18.8 seconds
First output speed	4.1 seconds	3.8 seconds	3.6 seconds	2.7 seconds	2.3 seconds
Continuous output speed	25 ppm	35 ppm	40 ppm	50 ppm	60 ppm
Memory: standard			2 GB		
HDD: maximum			320 GB		
SPDF capacity			220 sheets		
Weight			168.6 lbs (76.5 kg)		
Dimensions: W x D x H			23.1" x 25.7" x 37.9" (587 x 673 x 963 mm)		
Power source			120-127 V / 12A 60 Hz		
COPIER (STANDARD)					
Multiple copying			Up to 999 copies		
Copy resolution: maximum			600 x 600 dpi		
Zoom			From 25% to 400% in 1% steps		
PRINTER (STANDARD)					
CPU			Intel® Atom Processor Apollo Lake-I 1.36 GHz		
Printer language: standard			PCL5c, PCL6, PostScript 3 (emulation), PDF direct (emulation)		
Printer language: option			Genuine Adobe® PostScript®3™, IPDS, PDF Direct from Adobe®		
Print resolution: maximum			1,200 x 1,200 dpi		
Network interface: standard			Ethernet 10 base-T/100 base-TX/1000 base-T, USB Host I/F Type A, USB Device I/F Type B		
Network interface: option			Wireless LAN (IEEE 802.11a/b/g/n)		
Mobile printing capability			Apple AirPrint, Mopria®, NFC, RICOH Smart Device Connector		
Windows® environments			Windows® 8.1, Windows® 10, Windows® Server 2012, Windows® Server 2012R2, Windows® Server 2016, Windows® Server 2019		
Mac OS environments			Macintosh OS X v10.13 or later		
UNIX environments			UNIX Sun® Solaris, HP-UX, SCO OpenServer, RedHat® Linux, IBM® AIX, Citrix XenApp (7.6 LTSR, 7.15 LTSR, VirtualApps/Desktops 7 1912 LTSR and later)		
SAP® environments			SAP® R/3®, SAP® S/4®		
Other supported environments			AS/400® using OS/400 Host Print Transform		
SCANNER (STANDARD)					
Scanning: B/W / Color			120 ipm (simplex)/240 ipm (duplex)		
Resolution: maximum			600 x 600 dpi (1200 x 1200 dpi via TWAIN)		
File formats			Single page: TIFF, JPEG, PDF, High compression PDF, PDF/A Multi page: TIFF, PDF, High compression PDF, PDF/A		
Scan modes			E-mail, USB, SD Card, URL, FTP, SMB		
FAX (OPTION)					
Circuit			PSTN, PBX		
Transmission speed			Approximately 2 seconds		
Modem speed: maximum			33.6 Kbps		
Resolution			Standard mode: 8 x 3.85 line/mm, 200 x 100 dpi Detail mode: 8 x 7.7 line/mm, 200 x 200 dpi Option mode: 16 x 15.4 line/mm, 400 x 400 dpi		
Compression method			MH, MR, MMR, JBIG		
Memory			Standard: 4 MB (approximately 320 pages) Optional: 60 MB (approximately 4,800 pages)		
PAPER HANDLING					
Recommended paper size			Trays 1 and 2: Letter, Legal, Ledger, HLT, A3-A6, B4-B6, Envelopes Bypass tray: Letter, Legal, Ledger, HLT, A3-A6, B4-B6, Envelopes, Custom size		
Paper input: standard			1,200 sheets		
Paper input: maximum			4,700 sheets		
Paper output: standard			500 sheets		
Paper output: maximum	1,625 sheets	1,625 sheets	3,625 sheets	3,625 sheets	3,625 sheets
Paper weight			Trays: 60 - 300 g/m ² Bypass: 52 - 300 g/m ² Duplex: 52 - 256 g/m ²		
Paper types			Plain, Recycled, Special, Color, Letterhead, Cardstock, Preprinted, Bond, Coated, Envelope, Label, OHP		

RICOH IM 2500/IM 3500/IM 4000/IM 5000/IM 6000

MAIN SPECIFICATIONS

	RICOH IM 2500	RICOH IM 3500	RICOH IM 4000	RICOH IM 5000	RICOH IM 6000
ECOLOGY					
Power consumption: maximum	1,600 W	1,600 W	1,600 W	1,600 W	1,600 W
Power consumption: operation	437 W	536 W	584 W	755 W	811 W
Power consumption: ready	57.0 W	57.0 W	62.2 W	62.2 W	62.2 W
Power consumption: sleep	0.54 W	0.53 W	0.54 W	0.54 W	0.54 W
Power consumption: TEC ¹	0.29 kWh/week	0.41 kWh/week	0.45 kWh/week	0.61 kWh/week	0.72 kWh/week
EPEAT®	Gold Rated* *EPEAT Gold rating is applicable only in the USA.				
OUTPUT TRAYS AND FINISHER OPTIONS					
2x 550-sheet Paper tray (PB3300)	Paper size: Letter, Legal, Ledger, HLT, A3-A6, B4-B6 Paper weight: 60-300 g/m ² Dimensions: 23.1" x 27.0" x 9.7" (587 x 685 x 247 mm) Weight: 50.7 lbs (23 kg)				
2,000-sheet Large capacity tray (LCIT PB3290)	Paper size: Letter, A4 Paper weight: 60-300 g/m ² Dimensions: 23.1" x 27.0" x 9.7" (587 x 685 x 247 mm) Weight: 48.5 lbs (22 kg)				
1,500-sheet side Large capacity tray (LCIT RT3040)	Paper size: Letter, A4, B5 Paper weight: 60-300 g/m ² Dimensions: 13.4" x 21.4" x 11.4" (340 x 545 x 290 mm) Weight: 21.6 lbs (10.5 kg)				
1,000-sheet Hybrid finisher (SR3260)	Paper size: Letter, Legal, Ledger, HLT, A3-A6, B4-B6 Paper weight: 52-300 g/m ² Stack capacity: 1,000 sheets Staple capacity: 50 sheets – Letter, A4; 30 sheets – Legal, B4 or larger Staple paper size: Letter, Legal, Ledger, A3-B5 Staple paper weight: 52-105 g/m ² Staple positions: Top, Bottom, 2 staples Dimensions: 22.6" x 24.4" x 37.8" (575 x 620 x 960 mm) Weight: 75 lbs (34 kg)				
3,000-sheet Finisher (SR3280)	Paper size: Letter, Legal, Ledger, HLT, A3-A6, B4-B6 Paper weight: 52-300 g/m ² Stack capacity: 3,000 sheets Staple capacity: 50 sheets – Letter, A4; 30 sheets – Legal, B4 or larger Staple paper size: Letter, Legal, Ledger, A3-B5 Staple paper weight: 52-105 g/m ² Staple positions: Top, Bottom, 2 staples, Top slant Dimensions: 25.9" x 24.1" x 37.8" (657 x 613 x 960 mm) Weight: 83.8 lbs (38 kg)				
1,000-sheet Booklet finisher (SR3270)	Paper size: Letter, Legal, Ledger, HLT, A3-A6, B4-B6 Paper weight: 52-300 g/m ² Stack capacity: 1,000 sheets Staple capacity: 50 sheets – Letter, A4; 30 sheets – Legal, B4 or larger Staple paper size: Letter, Legal, Ledger, A3-B5 Staple paper weight: 52-105 g/m ² Staple positions: Top, Bottom, 2 staples, Booklet Dimensions: 22.6" x 24.4" x 37.8" (575 x 620 x 960 mm) Weight: 95.9 lbs (43.5 kg)				
500-sheet Internal finisher (SR3250)	Paper size: Letter, Legal, Ledger, HLT, A3-A6, B4-B5 Paper weight: (52-300 g/m ²) Stack capacity: 500 sheets – Letter, A4 Staple capacity: 50 sheets – Letter, A4; 30 sheets – Legal, B4 or larger Staple paper size: Letter, Legal, Ledger, A3-B5 Staple paper weight: (52-105 g/m ²) Staple positions: Top, Bottom, 2 staples Dimensions: 21.5" x 20.6" x 6.7" (546 x 523 x 170 mm) Weight: 28.2 lbs (12.8 kg)				
Internal shift tray (SH3080)	Tray capacity: 250 sheets – Letter, A4 Paper size: Letter, Legal, Ledger, HLT, A3-A6, B4-B6 Paper weight: 52-300 g/m ² Dimensions: 16.5" x 19.3" x 4.2" (420 x 489 x 107 mm) Weight: 3.1 lbs (1.4 kg)				
One-bin tray (BN3130)	Tray capacity: 125 sheets Paper size: Letter, Legal, Ledger, HLT, A3-A5, B4-B5 Paper weight: 52-300 g/m ² Dimensions: 17.5" x 17.7" x 5.9" (444 x 450 x 150 mm) Weight: 3.1 lbs (1.4 kg)				

¹ TEC value is measured based on the ENERGY STAR Ver. 3.0 test method.

RICOH IM 2500/IM 3500/IM 4000/IM 5000/IM 6000

MAIN SPECIFICATIONS

RICOH IM 2500 RICOH IM 3500 RICOH IM 4000 RICOH IM 5000 RICOH IM 6000

OTHER OPTIONS

Bridge Unit BU3090, Cabinet Type F, ESP XG-PCS-15D Power Filter, Fax Memory Unit Type M19 64MB, Fax Option Type M45, IEEE 802.11a/g/n Interface Unit Type M19, Internal Multi-fold Unit FD3010, IPDS Unit Type M45, OCR Unit Type M13, Optional Counter Interface Unit Type M12, PostScript3 Unit Type M45, Punch units (PU3070, PU3080, PU3090), Smart Card Reader Built-in Unit Type M45

CONSUMABLES

Toner: black	24,000 prints	24,000 prints	37,000 prints	37,000 prints	37,000 prints
Waste toner bottle	120,000 prints	120,000 prints	160,000 prints	160,000 prints	160,000 prints

Consumable yield based on 6% coverage on A4

Some options may not be available at the time of market release.

Specifications are subject to change without notice.

For maximum performance and yield, we recommend using genuine Ricoh parts and supplies.

Some features may require additional options and/or charges.



Ricoh USA, Inc.

300 Eagleview Boulevard
Exton, PA 19341



1-800-43-RICOH



www.ricoh-usa.com

RICOH
imagine. change.

Ricoh USA, Inc., 300 Eagleview Boulevard, Exton, PA 19341, 1-800-63-RICOH
©2021. Ricoh USA, Inc. All rights reserved. Ricoh® and the Ricoh logo are registered trademarks of Ricoh Company, Ltd. All other trademarks are the property of their respective owners. The content of this document, and the appearance, features and specifications of Ricoh products and services are subject to change from time to time without notice. Products are shown with optional features. While care has been taken to ensure the accuracy of this information, Ricoh makes no representation or warranties about the accuracy, completeness or adequacy of the information contained herein, and shall not be liable for any errors or omissions in these materials. Actual results will vary depending upon use of the products and services, and the conditions and factors affecting performance. The only warranties for Ricoh products and services are as set forth in the express warranty statements accompanying them.