



Sample 180-281046

Dante's Inferno

Batch/Lot # DI.876.23

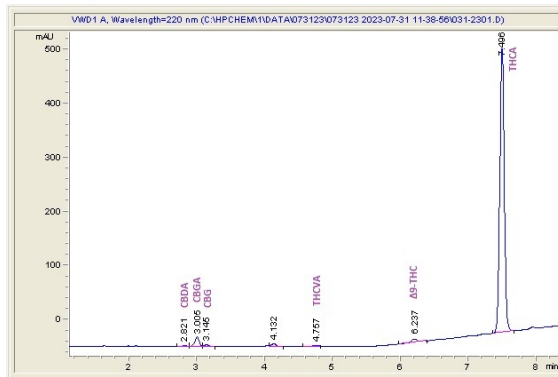
Sample Submitted: 11-31-2023; Report Date: 12-01-2023

## Dante's Inferno

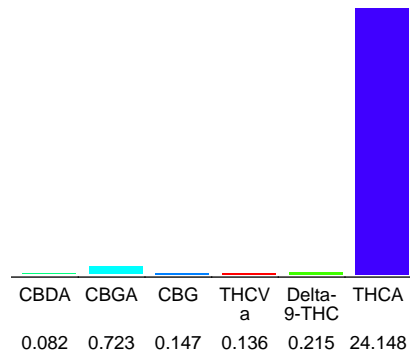
Plant Material: Flower

Batch/Lot # DI.876.23

### Chromatogram



### Cannabinoid Profile



### Cannabinoid Profile by HPLC

**0.22%**

Delta-9-THC

**0.00%**

CBD

**25.45%**

Total Cannabinoids

Cannabinoid	% wt	mg/g
CBDA	0.082	0.82
CBGA	0.723	7.23
CBG	0.147	1.47
THCVa	0.136	1.36
Delta-9-THC	0.215	2.15
THCA	24.15	241.48
<b>Total Cannabinoids</b>	<b>25.45</b>	<b>254.5</b>
<b>Calculated Total THC</b>	<b>21.39</b>	<b>213.93</b>
<b>Calculated CBD Yield</b>	<b>0.07</b>	<b>0.72</b>

Calculated Total THC = Delta-9-THC + 0.877 \* THCA

Calculated Maximum CBD Yield = CBD + 0.877 \* CBDA

**Marin Analytics, LLC**

250 Bel Marin Keys Blvd, Suite D4  
Novato, CA 94949

833-321-TEST / info@marinanalytics.com

**Sara Biancalana**  
Chief Scientist