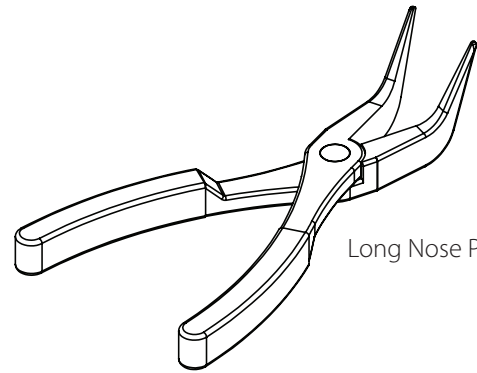


Removal of Damaged Screws

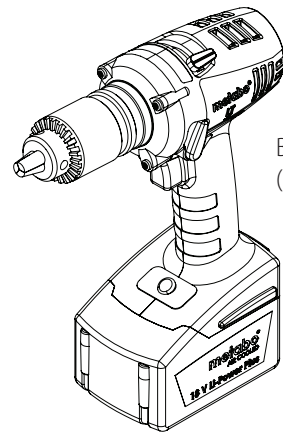
Tools & Replacement Parts Required



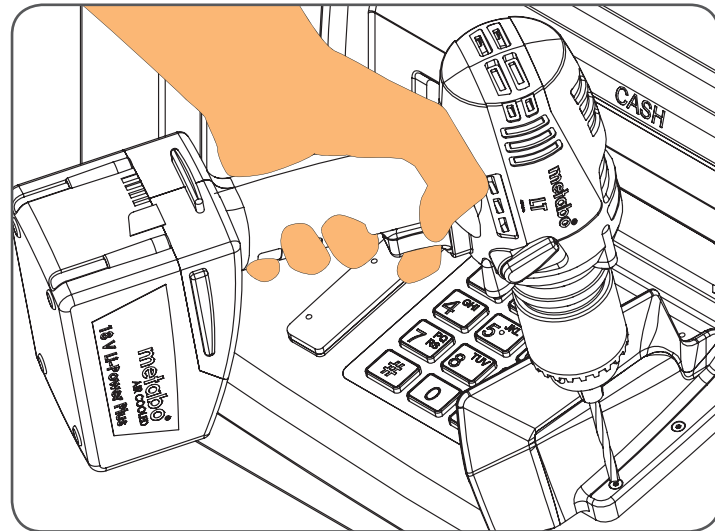
Long Nose Pliers



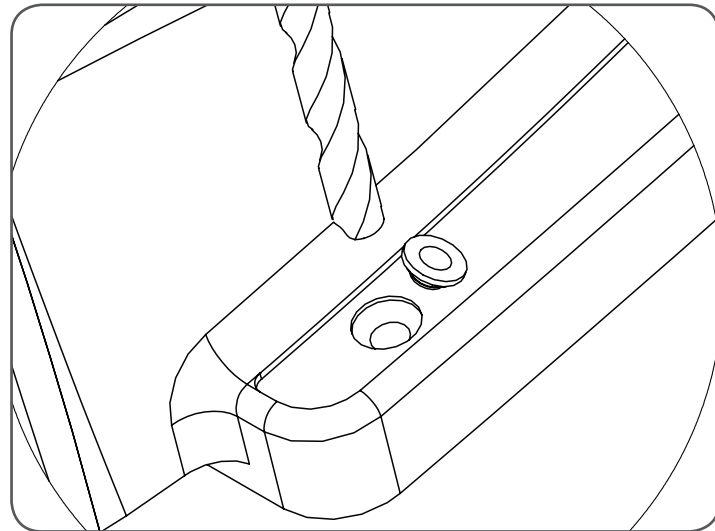
1 x 4.2mm Drill Bit



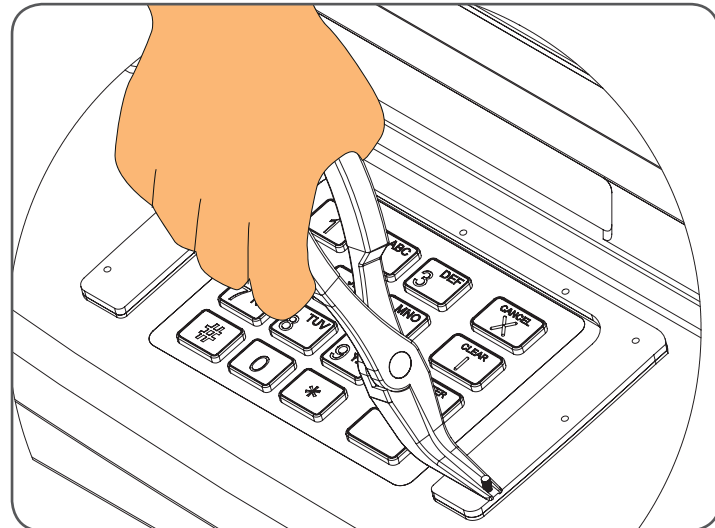
Battery Drill
(Not Included)



Step 1: Fit the 4.2mm drill bit into the battery drill and drill the head of the damaged screw as shown.



Step 2: Keep drilling until the countersunk screw head come off.



Step 3: Now that the screw head has been removed this will allow you to remove the wings or the hinge bracket. Once the wing or hinge bracket has been removed the threaded part of the screw will be exposed on the base plate. Using the long nose pliers unscrew the threaded part of the screw in an anti-clockwise. Removal complete.

PINGuard™

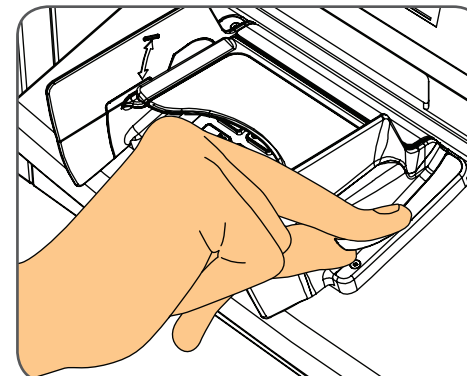
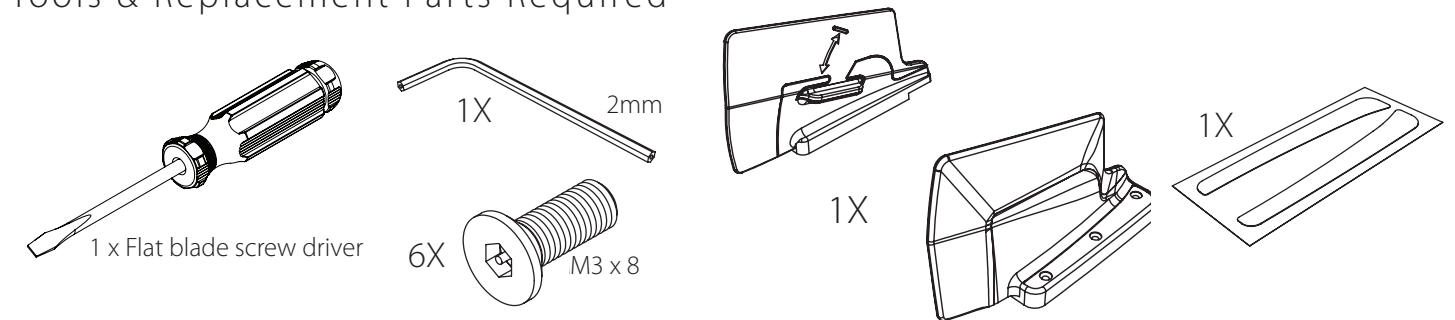
EVO1i Repair Instructions

Important Information Please Read First

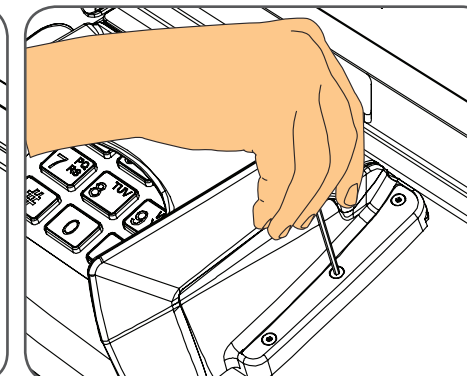
- All safety equipment to be provided by installer
- For all Material Safety Data Sheets please email support@pinguard.com
- For full terms and conditions please email support@pinguard.com

Replacing Wings

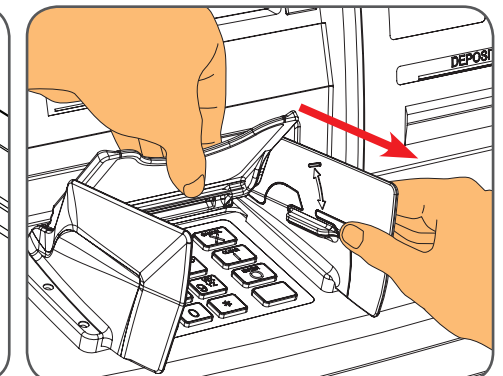
Tools & Replacement Parts Required



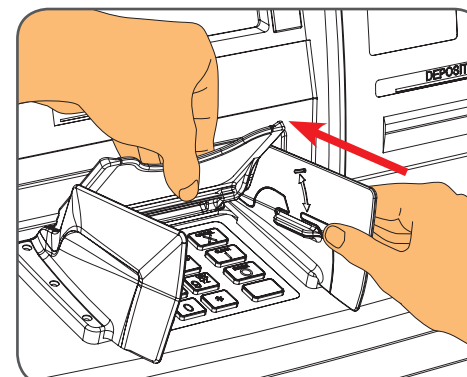
Step 1: Remove the top cover labels on both wings (if this is difficult use a flat bladed screwdriver to lift the label).



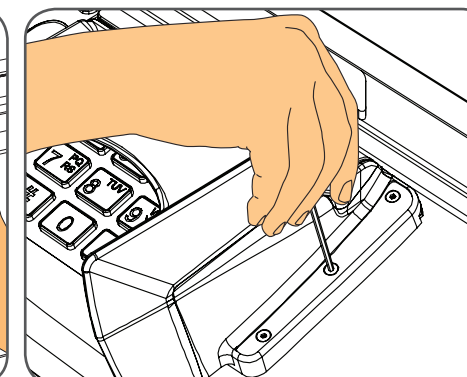
Step 2: Then using the 2mm (small version) security allen key unscrew the 6 screws on the wings. (in the unlikely event of the screws become damaged, refer to the removal damaged screws).



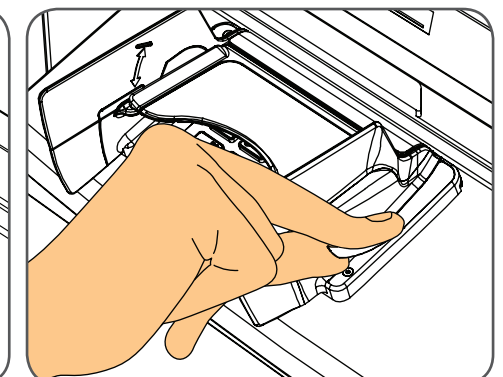
Step 3: Remove the damaged wings.



Step 4: Fit the replacement wings ensuring that you slide them up the base plate.



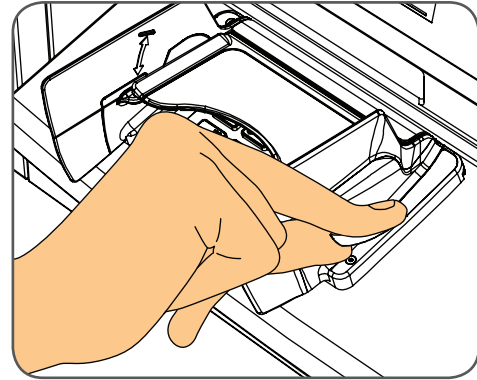
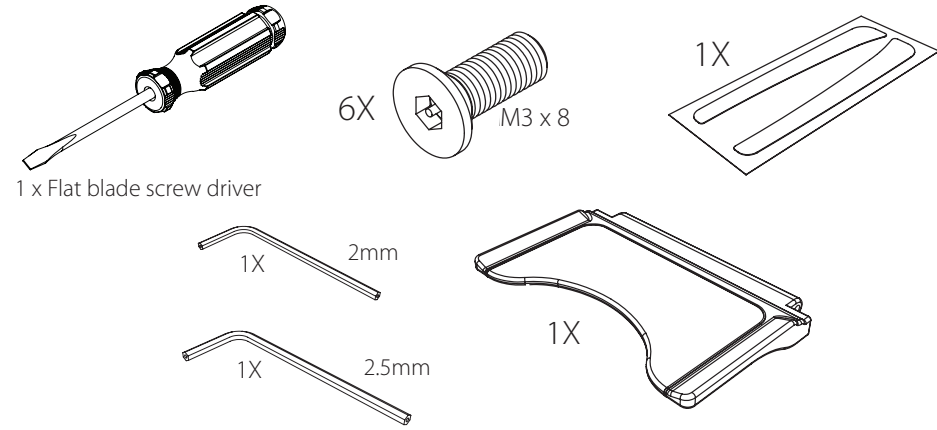
Step 5: Screw down the wings using the 2mm (small version) security Allen key.



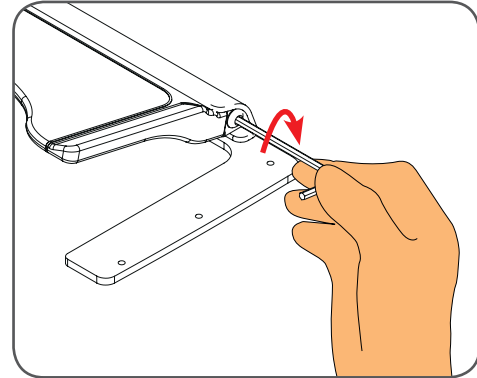
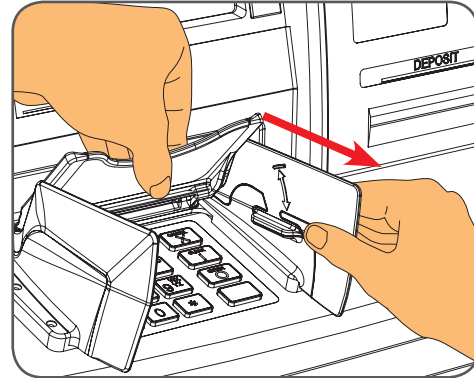
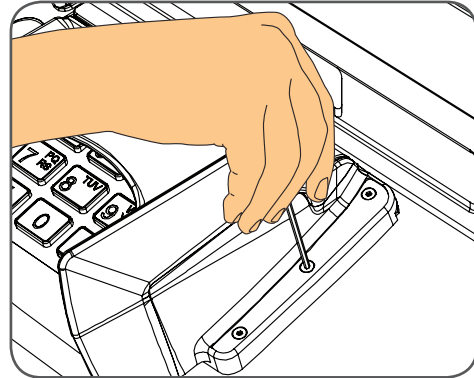
Step 6: Fit the cover labels.

Replacing Lens

Tools & Replacement Parts Required



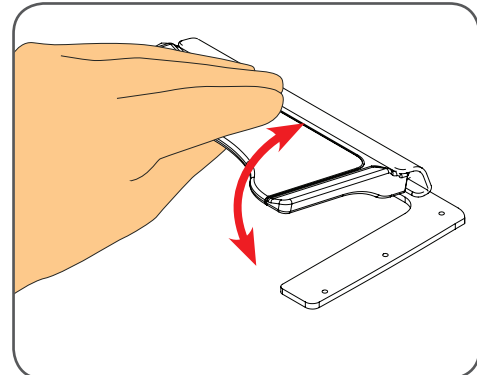
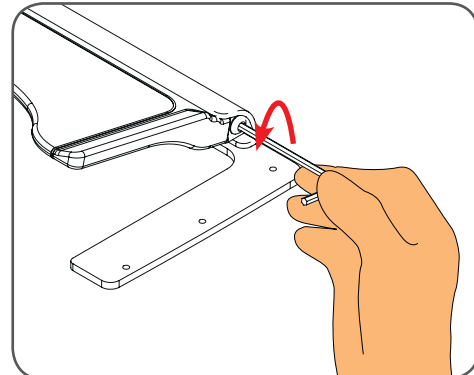
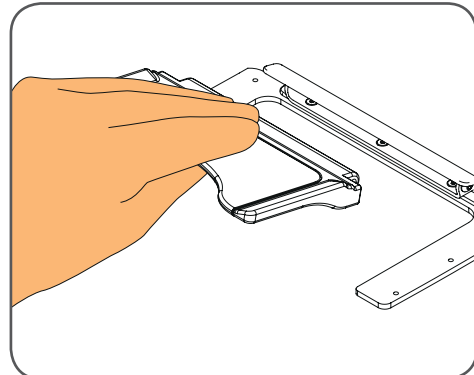
Step 1: Remove the top cover labels on both wings (if this is difficult use a flat bladed screwdriver to lift the label).



Step 2: Then using the 2mm (small version) security allen key unscrew the 6 screws on the wings. (in the unlikely event of the screws become damaged, refer to the removal damaged screws).

Step 3: Remove the wings.

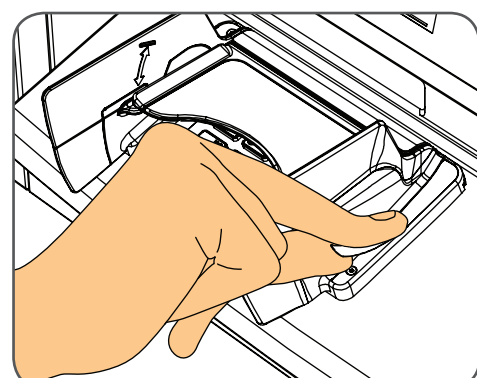
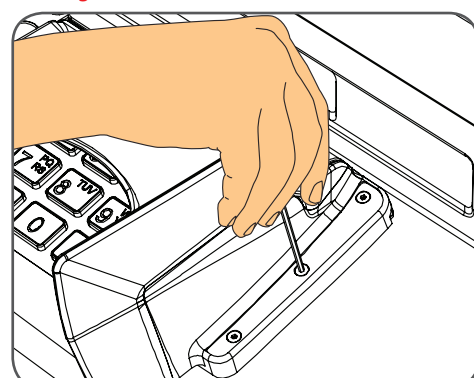
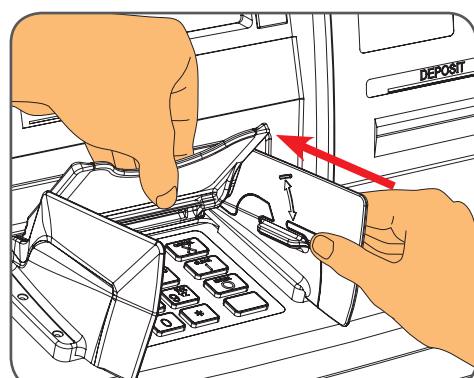
Step 4: Then using the 2.5mm Allen Key (Larger version) unscrew the 2 hinge screws.



Step 5: The lens can then be removed.

Step 6: Fit the replacement lens by re-tightening the 2 hinge screws using the 2.5mm Allen Key (Larger version). **Ensure that the hinge screws locate into the hinge holes.**

Step 7: Flap the hinge up and down and pull it firmly to ensure that it is correctly fitted.



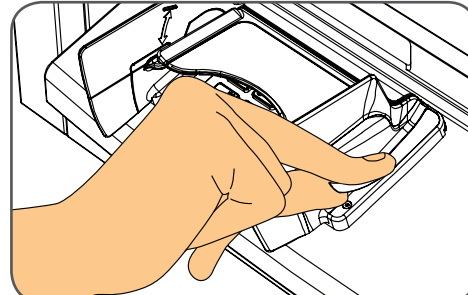
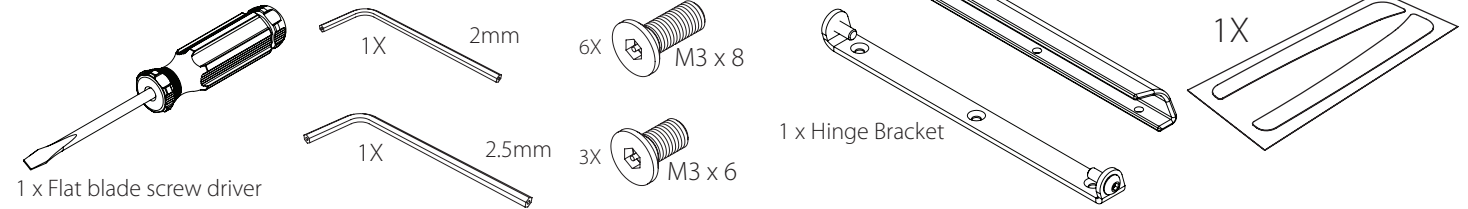
Step 8: Refit the wings ensuring that you slide them up the base plate.

Step 9: Screw down the wings using the long screws using the 2mm (small version) security Allen key.

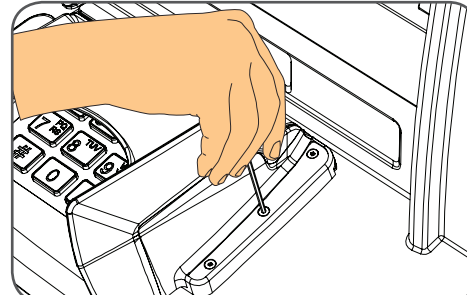
Step 10: Fit the cover labels.

Replacing Back Bracket & Rubber C-Section

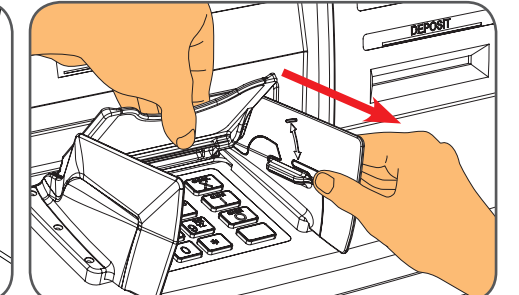
Tools & Replacement Parts Required



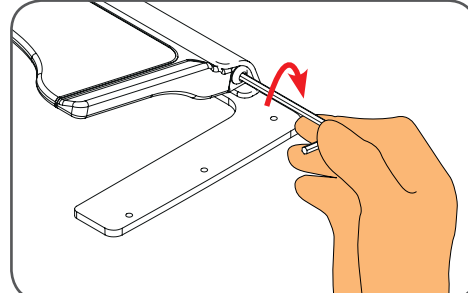
Step 1: Remove the top cover labels on both wings (if this is difficult use a flat bladed screwdriver to lift the label).



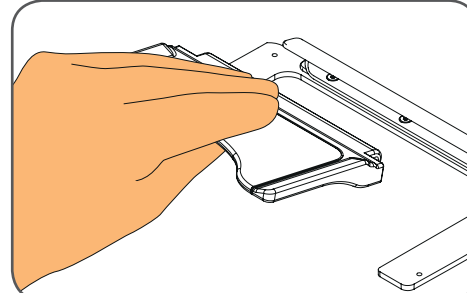
Step 2: Then using the 2mm (small version) security allen key unscrew the 6 screws on the wings. (in the unlikely event of the screws become damaged, refer to the removal damaged screws).



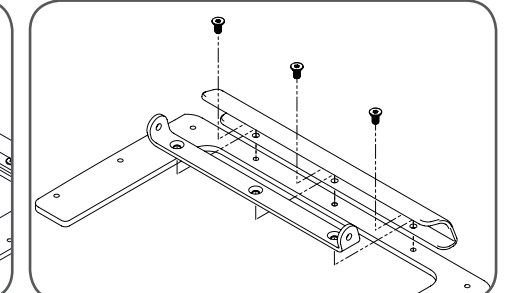
Step 3: Remove the wings.



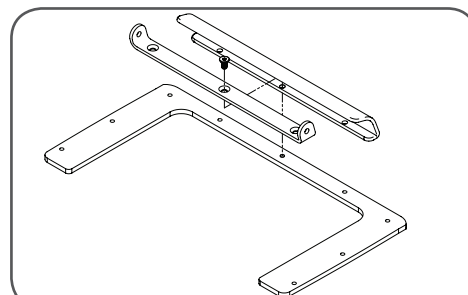
Step 4: Then using the 2.5mm Allen Key (Larger version) unscrew the 2 hinge screws.



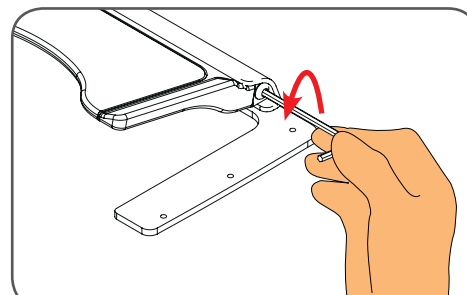
Step 5: The lens can then be removed.



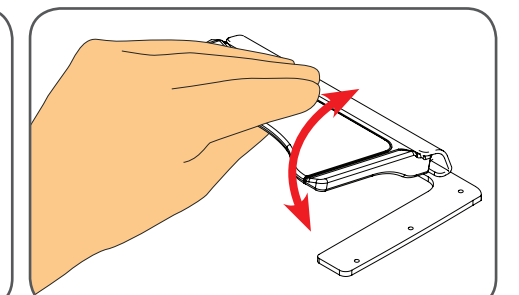
Step 6: Once the lens has been removed this will reveal 3 screws on the hinge bracket. Unscrew these and remove the screws, hinge bracket and rubber C-section.



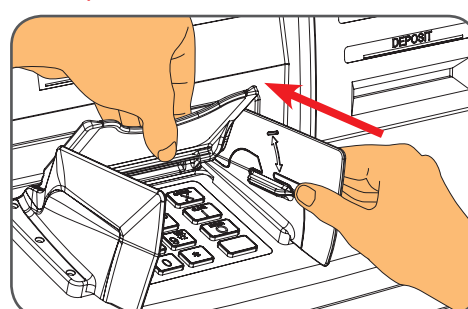
Step 7: Then taking the replacement hinge bracket and rubber C-section align the 3 holes in the hinge bracket and the 3 holes in the rubber C-section then push one of the M3 X 6 (short screws) through the centre hole. Locate all 3 parts on to the centre hole at the back of the base plate Tighten the screws using the 2mm Allen key (Smaller version) **Ensure that the rubber section is sandwiched between the hinge bracket and base plate.**



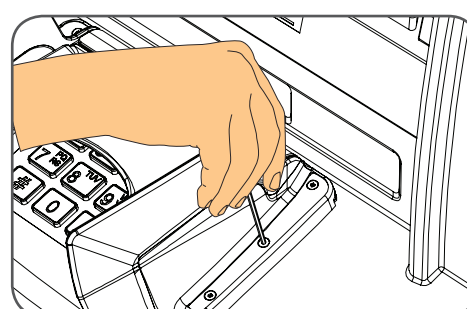
Step 8: Fit the replacement lens by re-tightening the 2 hinge screws using the 2.5mm Allen Key (Larger version). **Ensure that the hinge screws locate into the hinge holes.**



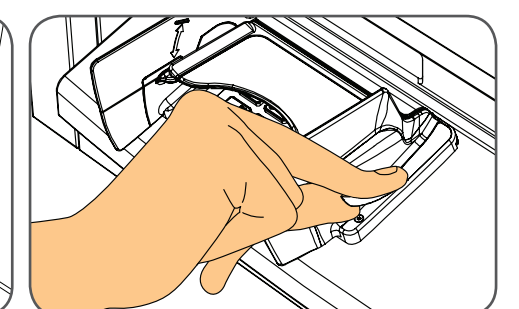
Step 9: Flap the hinge up and down and pull it firmly to ensure that it is correctly fitted



Step 10: Refit the wings ensuring that you slide them up the base plate.



Step 11: Screw down the wings using the 2mm (small version) security Allen key.



Step 12: Fit the cover labels.