



**INVERTERS**

## Infinity 15kW

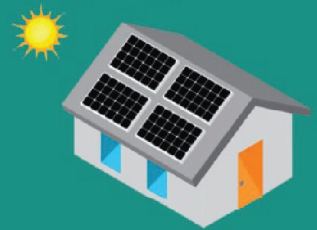
On-Grid Inverter with Energy Storage

Phase Independent Grid-Tie & Hybrid Inverter  
with Optional LiPO ESS 5Kwh / 10Kwh



**Plug & Play  
ESS**

PV Capacity 15KW



Data Logging & Storage Portal  
Inbuilt Wifi 4G with MOBILE APP  
Compatible with Lithium Batteries  
Netmetering standards compliance

- ◆ Pure sine wave output
- ◆ Self-Consumption & Feed-in to the grid
- ◆ Programmable supply priority for PV, Battery or Grid
- ◆ User-adjustable charging Current & Voltage
- ◆ Programmable multiple operation modes: Grid-tie, off-grid & grid-tie with backup
- ◆ Monitoring software for real-time status display & control
- ◆ Option of 5 Kwhr & 10 Kwhr battery bank inside
- ◆ Additional external battery connection can add more capacity



# INFINITY 15kW

## ON-GRID INVERTER WITH ENERGY STORAGE SPECIFICATION



### INFINITY 15kW HYBRID ON & OFF-GRID INVERTER WITH ENERGY STORAGE OPTION & INTELLIGENT MANAGEMENT

MODEL	Infinity 15kW 3Pi	Infinity 15kW 3P	Infinity 15kW 1 ph
<b>PHASE</b>	<b>3-Phase in / out</b>	<b>3x1 ph or 3 ph - in / out</b>	<b>1-Phase in / out</b>
Maximum PV Input Power	18 kW	18 kW	18 kW
Rated Output Power	15 kW - 3ph	15 kW x 3 - 1ph	15 kW - 1ph
Maximum Charging Power	11.52 kW DC	11.52 kW DC	11.52 kW DC
Mode		On-Grid / Off-Grid	
Battery Less Operation	Yes	No	No
Touch Screen LCD HMI		7"	
Load Priority AC Output Ports		3 Hi + 3 Lo	
<b>GRID-TIE OPERATION</b>			
<b>PV INPUT (DC)</b>			
Nominal DC Voltage / Maximum DC Voltage		360 VDC / 450 VDC	
Start-up Voltage / Initial Feeding Voltage		130 VDC / 150 VDC	
MPP Voltage Range		120 VDC ~ 380 VDC	
Number of MPP Trackers / Maximum Input Current		3 x 27A	
<b>GRID OUTPUT (AC)</b>			
Nominal Output Voltage		220/230/240 VAC	
Output Voltage Range		184-264.5 VAC or 195.5-253 VAC (Selectable)	
Nominal Output Current	3 x 21.7A	3 x 21.7A	65A
Power Factor		>0.99	
<b>EFFICIENCY</b>			
Maximum Conversion Efficiency (DC/AC)		95%	
<b>OFF-GRID OPERATION</b>			
<b>AC INPUT</b>			
AC Start-up Voltage / Auto Restart Voltage		120-140 VAC / 180 VAC	
Acceptable Input Voltage Range		90-280 VAC or 170-280 VAC	
Frequency Range		50 Hz/60 Hz (Auto Sensing)	
Maximum AC Input Current	3 x 40A	3 x 40A	120A
<b>PV INPUT (DC)</b>			
Maximum DC Voltage		450 VDC	
MPP Voltage Range		120 VDC ~ 430 VDC	
Number of MPP Trackers / Maximum Input Current		3 x 27A	
<b>BATTERY MODE OUTPUT (AC)</b>			
Nominal Output Voltage		220-230-240 VAC	
Output Waveform		Pure Sine Wave	
Efficiency (DC to AC)		95%	
<b>HYBRID OPERATION</b>			
<b>PV INPUT (DC)</b>			
Nominal DC Voltage / Maximum DC Voltage		360 VDC / 450 VDC	
Start-up Voltage / Initial Feeding Voltage		130 VDC / 150 VDC	
MPP Voltage Range		120 VDC ~ 430 VDC	
Number of MPP Trackers / Maximum Input Current		3 x 27A	
<b>GRID OUTPUT (AC)</b>			
High & Low Priority Output Ports		Yes	
Low Port Derated Output (Batteryless Mode)		Yes	
Nominal Output Voltage		220-230-240 VAC	
Output Voltage Range		184-264.5 VAC or 195.5-253 VAC (Selectable)	
Nominal Output Current	3 x 21.7A	3 x 21.7A	65A
<b>AC INPUT</b>			
AC Start-up Voltage / Auto Restart Voltage		120-140 VAC ~ 180 VAC	
Acceptable Input Voltage Range		90-280 VAC or 170-280 VAC	
Maximum AC Input Current	3 x 40A	3 x 40A	120A
<b>BATTERY MODE OUTPUT (AC)</b>			
ESS		10 Kwhr / 5 Kwhr	
Nominal Output Voltage		220-230-240 VAC	
Output Waveform		Pure Sine Wave	
Efficiency (DC to AC)		95%	
<b>BATTERY &amp; CHARGER</b>			
Nominal DC Voltage		48 VDC	
Maximum Solar Charging Current		240 A	
Maximum AC Charging Current		240 A	
Maximum Charging Current		240 A	
ESS Battery Capacity Option		Nil / 5Kwhr / 10Kwhr	
<b>GENERAL</b>			
<b>PHYSICAL</b>			
Dimension D x W x H (mm)		750 x 320 x 1000	
Net Weight (kgs)		65 / 105 / 145	
<b>INTERFACE</b>			
Communication Port		USB or RS-232/Dry Contact, WiFi	
<b>ENVIRONMENT</b>			
Humidity		0~90% RH (No Condensing)	
Operating Temperature		-10°C to 50°C	

Product specifications are subject to change without further notice.

SPECIFICATION	BASIC PARAMETERS	10 KWhr
<b>Nominal</b>	Nominal Voltage (V)	48
	Nominal Capacity (Wh)	9,600
	Usable Capacity (Wh)	9,120
<b>Physical</b>	Dimension (mm)	<b>Inside the Inverter</b>
	Additional Weight (kg)	80
<b>Electrical</b>	Discharge Voltage (Vdc)	44.5
	Charge Voltage (Vdc)	52.5 ~ 53.5
	Charge / Discharge Current (Amps)	100 (Recommended)
		150 (Max)
<b>Others</b>	Communication Port	RS485,CAN
	No of Cells	16 x 2
	Working Temperature/°C	0 ~ 50 Charge
		-10 ~ 50 Discharge
	Shelf Temperature/°C	-20 ~ 60
	Altitude (M)	< 2000
	IP Rating	IP20
	Humidity (RH)	5 ~ 95%
	Certification	IEC62619/CE/UN38.3
	Design Life	10+ Years (25°C/77°F)
Cycle Life	>4,500 (25°C)	

SPECIFICATION	BASIC PARAMETERS	5 KWhr
<b>Nominal</b>	Nominal Voltage (V)	48
	Nominal Capacity (Wh)	4,800
	Usable Capacity (Wh)	4,560
<b>Physical</b>	Dimension (mm)	<b>Inside the Inverter</b>
	Additional Weight (kg)	40
<b>Electrical</b>	Discharge Voltage (Vdc)	44.5
	Charge Voltage (Vdc)	52.5 ~ 53.5
	Charge / Discharge Current (Amps)	50 (Recommended)
		75 (Max)
<b>Others</b>	Communication Port	RS485,CAN
	No of Cells	16
	Working Temperature/°C	0 ~ 50 Charge
		-10 ~ 50 Discharge
	Shelf Temperature/°C	-20 ~ 60
	Altitude (M)	< 2000
	IP Rating	IP20
	Humidity (RH)	5 ~ 95%
	Certification	IEC62619/CE/UN38.3
	Design Life	10+ Years (25°C/77°F)
Cycle Life	>4,500 (25°C)	