

How to clean the scroll wheel on the RollerMouse Red & Red plus:

First, make sure the mouse is unplugged from the computer, if it's a RollerMouse Red/Red plus Wireless then remember to turn it off on the back (On/Off button).

Next step is to remove the wrist pad. If you have never taken the pad off before, a simple twist in this notch here with this tool that came with the mouse, or a flathead screwdriver if you no longer have that tool, and the pads should come right off.



| Contour Design Nordic A/S

| Borupvang 5B, st.tv.
| 2750 Ballerup
| Denmark

| Phone: +45 70 27 02 27

| www.contourdesign.com
| info@contour-design.com

These two middle screws need to come out from the underside.



| Contour Design Nordic A/S

| Borupvang 5B, st.tv.
| 2750 Ballerup
| Denmark

| Phone: +45 70 27 02 27

| www.contourdesign.com
| info@contour-design.com

Flip over your RolleMouse, and the buttons can now be pried off using a small flat screwdriver. Lift up the button housing from right to left as there are 2 plugs on the left side.



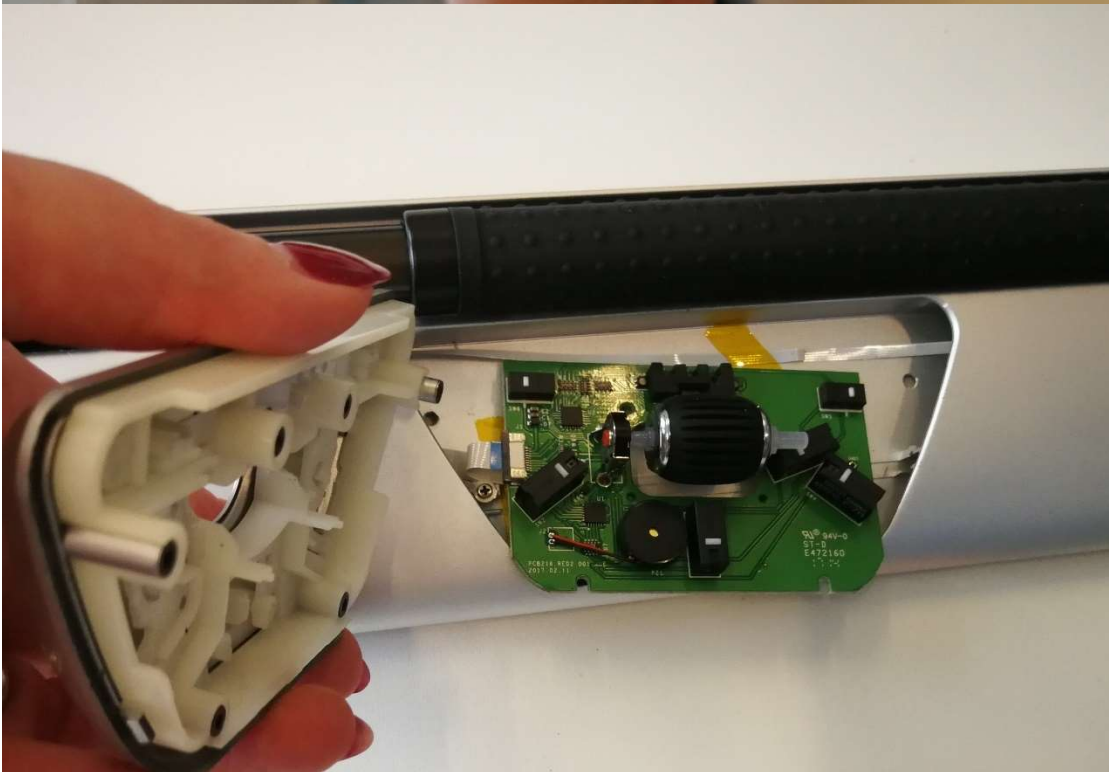
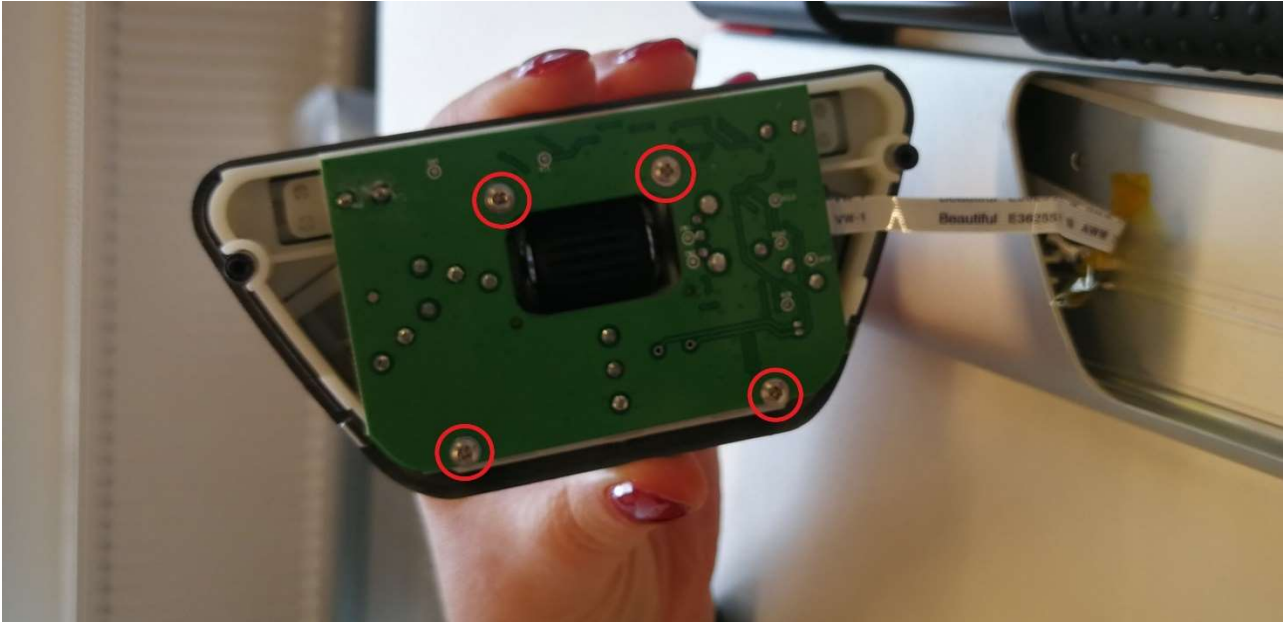
| Contour Design Nordic A/S

| Borupvang 5B, st.tv.
| 2750 Ballerup
| Denmark

| Phone: +45 70 27 02 27

| www.contourdesign.com
| info@contour-design.com

Unscrew these 4 screws to separate the board from the buttons.

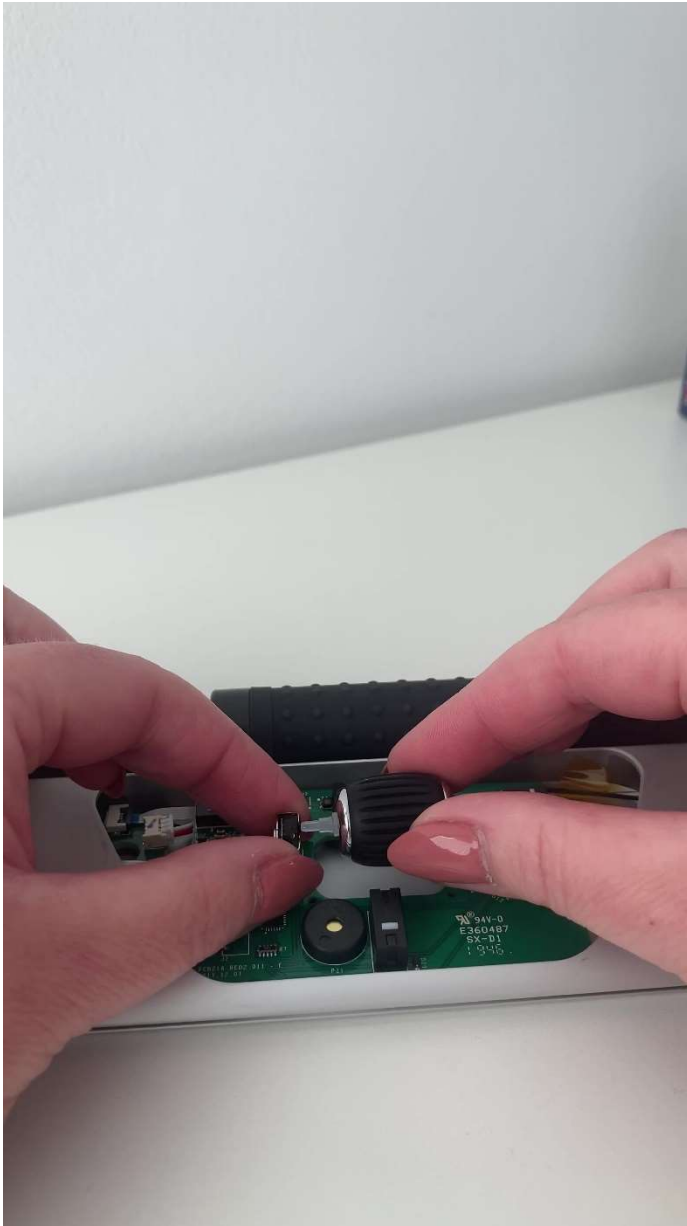


| Contour Design Nordic A/S

| Borupvang 5B, st.tv.
| 2750 Ballerup
| Denmark

| Phone: +45 70 27 02 27

| www.contourdesign.com
| info@contour-design.com



Remove the scroll wheel, by slightly pulling and lifting to the right, it will become loose of the 2 holes that holds it in place.

| Contour Design Nordic A/S

| Borupvang 5B, st.tv.
| 2750 Ballerup
| Denmark

| Phone: +45 70 27 02 27

| www.contourdesign.com
| info@contour-design.com



Now you can clean the scroll wheel from dust particles as well as other unwanted dirt that has been accumulated by time, its recommended to use an air duster and a dry cloth.

Now all you need to reassemble the Rollermouse again is to reverse the process.

Best regards / Med venlig hilsen / Med vänlig hälsning / Med vennlig hilsen
Customer Service

Contour Design Nordic A/S
Borupvang 5B st.tv
2750 Ballerup
Denmark

| Contour Design Nordic A/S

| Borupvang 5B, st.tv.
| 2750 Ballerup
| Denmark

| Phone: +45 70 27 02 27

| www.contourdesign.com
| info@contour-design.com