



# Mano Médical

Medical equipment for veterinarians

## YOUR PARTNER for Vet Equipment

*Committed to your side  
for more than 20 years*



[www.manomedical.com](http://www.manomedical.com)

CATALOGUE 2021





## Mano Médical

15, rue du Noroit  
ZA des Alleux  
22100 Taden  
FRANCE

Tel. +33 (0)2 96 85 86 76  
export@manomedical.com  
www.manomedical.com



Dear Partner,

Mano Médical was created in 1999 by Patrice PERSONNIC, to bring solutions dedicated to veterinarians in France and worldwide.

You will find in this catalogue products and services that have made us successful but also new equipment that we are happy to introduce you.

As always, we make sure to select and develop solutions that are practical, cost-effective, efficient and adapted to the veterinary market.

We still propose ranges of products for companion animals clinics but also specific equine solutions such as endoscopes and digital X-Rays solutions.

Finally, we can study specific requests according to your local needs, providing you with OEM solutions or exclusivities.

Do not hesitate to contact Rémy FRÉJAVILLE, our export manager for any information on our products. Together with our whole team, he will take care of your requests.

Thank you for your trust and fidelity,

Patrice PERSONNIC and Jean-Stéphane PAILLUSSON  
Mano Médical executive team

# LET'S GET IN TOUCH!

We are happy to help you

## YOUR DEDICATED CONTACT:

Rémy FRÉJAVILLE • [r.frejaville@manomedical.com](mailto:r.frejaville@manomedical.com) • Tel. +33 637 15 73 34



### • PRODUCT DEVELOPMENT

We develop and select our range of products with VETERINARIAN specifications:

Discover in our catalogue new products:

- ▶ [Carbon Tech V2](#) heating mat for even more safety and efficiency! (page 9)
- ▶ [DR Imaging and ManoVet](#) digital X-Ray solution (page 10)
- ▶ [LaserFlex LT16 Laser Therapy](#) device dedicated to cats, dogs, horses and exotics (page 12)
- ▶ [Portable equine ManoView](#) endoscope (page 12)
- ▶ [Compact MonitoVet](#) vital sign monitors (page 24)
- ▶ [SigmaVet](#) electro-surgical and vessel sealing all-in-one solution (page 31)

### • MARKETING AND SALES

We support you in all your needs with marketing tools and training to your team to help you promote our products in your country.

For specific requests, we can supply you with specific OEM products, that will give value to your sales. We also do our best to offer the optimal price for your specific market situation.

### • CUSTOMER SERVICE

Our office includes:

- A sales department dedicated to the export market, managed by Rémy FRÉJAVILLE
- A product development department
- A customer service for ongoing support



Contact us: [export@manomedical.com](mailto:export@manomedical.com) • Tel. + 33 296 85 86 76  
Find us: [www.manomedical.com/en](http://www.manomedical.com/en)  
Follow us: [www.facebook.com/manomedical.com](https://www.facebook.com/manomedical.com)  
[www.linkedin.com/company/manomedical](https://www.linkedin.com/company/manomedical)

## OWN-BRAND PRODUCTS

---



### **DOPPLER VET BP**

page 6



### **ANIMAL WELFARE**

page 8



### **MANO IMAGING X-RAY**

page 10



### **LASER THERAPY**

page 12

## EXCLUSIVE DISTRIBUTION

---



### **PETMAP BP DEVICE**

page 16



### **MONITORING**

page 18



### **ENDOSCOPY**

page 20



### **ELECTRO SURGERY**

page 22

## OTHER PRODUCTS

---



### **MONITORING**

page 24



### **INFUSION**

page 26



### **DENTAL**

page 27



### **LIGHTING**

page 28



### **CLINIC EQUIPMENT**

page 30



### **VESSEL SEALING**

page 31



### **MICROSCOPES**

page 32



### **X-RAY**

page 33

# OWN-BRAND PRODUCTS





# Vet BP Doppler

Blood pressure measurement, monitoring,  
small animals' examination

- Ergonomic design, small and light-weight
- Reliable, accurate, robust and liquid proof
- Rechargeable battery operated
- 4 cuffs in different sizes
- 3 different probes



## Blood pressure probe

Large beam for a better flow detection



## Transesophageal doppler probe

A cardiac monitoring solution for use on anesthetized animals



## Pencil probe

For easy exotic animals' examination



# Veterinary Doppler

The importance of blood pressure measurement has been underestimated for a long time in veterinary medicine. This examination was considered as complicated on an alert animal.



At the beginning of the disease, symptoms of arterial hypertension in animals are difficult to detect. In many cases, the diagnosis is established too late. Primarily older animals and particularly cats are affected by hypertension, however there are also a lot of indications seen in dogs.

A regular check should be performed on older animals: blood analysis (detection of kidney insufficiency) and blood pressure measurement to detect hypertension. According to the currently available studies, up to 30% of cats suffering from chronic kidney insufficiency have systemic hypertension. Arterial hypertension may cause severe brain, eye and kidney disorders.

It is also useful to perform a blood pressure screening before or during an infusion: the arterial pressure can be a suggestive indicator of an animal's condition before an infusion. The veterinarian can adjust the infusion according to the results.

## Monitoring with the doppler:

The Doppler allows flow detection in the artery. The probe can be affixed to the animal's paw or tail during anesthesia or during an intensive care. The veterinarian will hear a sound signal reflecting heart rate and pulse.

# Carbon Tech Heating Mat



## REVOLUTIONARY TECHNOLOGY FOR ANIMAL CARE

- High density carbon fabric
- Flexible structure, Optimal comfort
- Super resistant coating
- Safe to use
- Natural and durable



### 2 sizes:

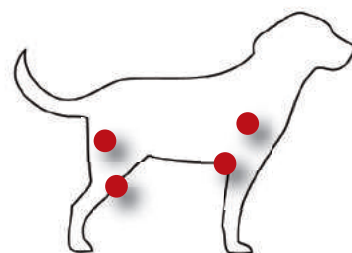
- Cage model: 52 x 62 cm
- Surgical table model: 52 x 112 cm



# VetCare Anti bed sore mat

Specially developed for veterinary in-patients

- High performance memory shape foam
- Adjustment to animal morphology and weight
- Easy to clean and disinfect



To prevent from pressure ulcers on hips, shoulders, elbows, knees...





# Carbon Tech V2

## To warm up safer, stronger and faster...

- **High sensitivity sensor and regulator:**

contact temperature maintained  
below 42°C (107.6°F)

- Heating temperature  
reached within a few minutes

- **Increased power**

to heat  
more efficiently  
while remaining safe  
thanks to the automated  
temperature regulation

- **Safety shutdown** after 12-hour-use

- 3 power levels available (50, 80 and 100%)

- **Easy and safe cleaning:** power block can be disconnected

- Coating guaranteed 5 years on bites and scratches



2 sizes: 52x62 cm (cage model) and 52x112 cm (table model)

## ...for even less hypothermia!

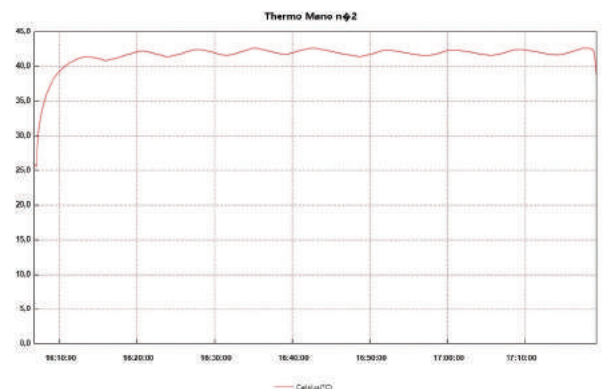


Even more efficient warming for animals of all sizes,  
proven with clinical testing!

*Temperature graph of a 9 kg poodle*

*At the beginning of the surgery: 37.8° C (100.04 F)*

*At the end of the surgery (about 1 hour later): 37.7° C (99.86 F)*



42°C (107.6 F)  
maximum



Instant and  
even heating



Automatic  
power cut out









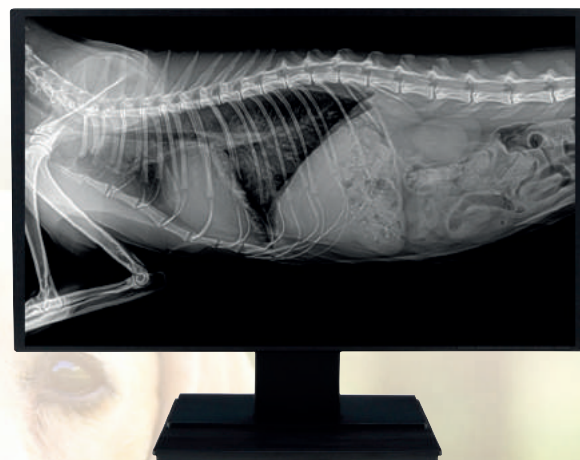
3 heating levels  
50, 80 & 100%



Detachable cable  
for easy cleaning

## DR Imaging Flat Panel

-  CE Medical Silicium CSI Flat Panel
-  Instantly delivered high resolution images
-  Works with any X-ray generator  
2 sizes: 40 x 43 and 43 x 43 cm
-  Fits easily in your cassette drawer
-  Can be used wireless (option)
-  **ManoVet** software: User-friendly and convenient interface allowing an optimal management of your images



See our video introducing ManoVet on [www.manomedical.com/en](http://www.manomedical.com/en)  
section: products/digital x-ray/mano dr imaging



### A custom-made solution!



Select the right set according to your needs:

- 2 flat panel sizes: **40 x 40** or **43 x 43 cm**
- 2 image processing configurations: **ManoVet STANDARD** or **ManoVet PREMIUM**
- **Mini PACS** Mano Médical

*More information* ►

# ManoVet Software

## STANDARD and PREMIUM



Choose the best solution:  
**YOURS!**



### ManoVet STANDARD **designed for daily operations**

- An intuitive and easy to use display
- Image quality: Image processing specifically developed for use on animals
- Possibility to adjust the image style to customer's requirements
- Possibility to save images with various post-processing parameters
- Preset anatomical parts for dogs, cats, horses and exotics
- Calibrate measurements to take into account object / panel distortion in just two clicks
- Windows or DICOM printing
- Guided measurements
- JPG images sharing on the clinic network, allowing to integrate them in the patient file on the management software



### ManoVet PREMIUM **to meet special needs**

- **Connectivity module**
- **Advanced images Management**
- **Bidirectional connection with the Mano Médical X-ray generator RX32 (B&W)**
- **Radiation protection** (automatic dose information recording for all images and performing staff)
- **Orthopaedis Module** (advanced functionalities for orthopaedis)

### Mini PACS Mano Médical *(option)*

**Get access to all images from any other location in the clinic with the full set of ManoVet functionalities!**



# LaserFlex LT16 / by Mano Médical



## Dogs, Cats, Horses and Exotics



Laser therapy can be used for many conditions that you may face commonly. In addition, it is a non-invasive and painless treatment.

### Typical applications in veterinary medicine:

- Pain treatment in general
- Facilitating post-surgical healing
- Facilitating wound healing
- Inflammatory symptom reduction
- Arthrosis pain reduction
- Œdema reduction...



### Useful tips

**Biological effects,  
Treatment techniques, etc...**

Visit our section

**"Did you know?"**

[www.manomedical.com/en](http://www.manomedical.com/en)

# LaserFlex LT16 / by Mano Médical

DESIGNED BY  
MANO  
MÉDICAL

## Ergonomy:

- Long-life battery operation
- Silent fan
- Large 7" touchscreen
- Compact and Light-weight (2.2 kg)
- Powered by Android for easy updates
- Wireless connection

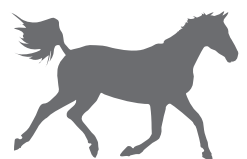


No need for plug nearby,  
**LaserFlex LT16 works on long-life battery.**



## Simplicity:

- Simple and intuitive display
- 16 Watts power pulse mode to ensure even deeper treatments
- 3 different applicators adapted to any laser therapy conditions



See our introduction video on [www.manomedical.com/en](http://www.manomedical.com/en)  
section: laser-therapy/laserflex-lt16-laser-therapy

## LaserFlex LT16 / by Mano Médical

### Mobility • Simplicity • Efficiency

- **Small price for big payback:** revenue increase for small investment of time and money
- **Therapeutic efficacy on many conditions** for non-invasive and painless treatments
- **Quick and easy set up in the clinic as well as in the field** thanks to its long-life battery and light weight



#### 3 wavelengths

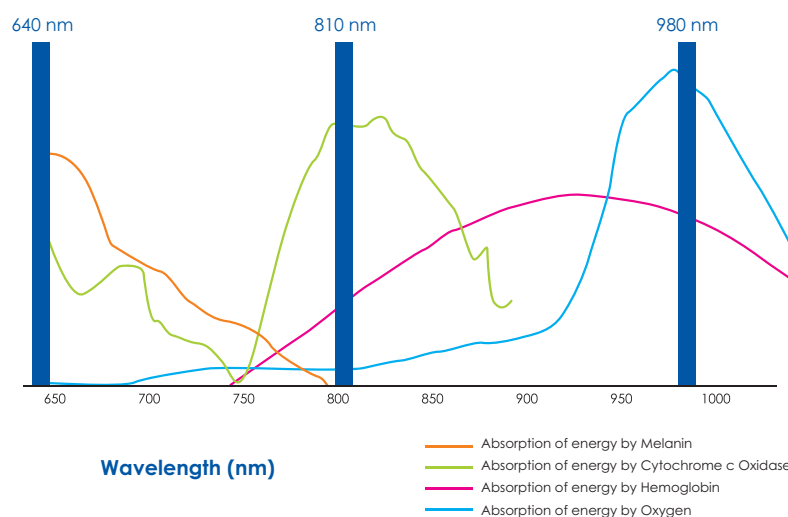
- **640 nm:** Wavelength allowing treatment of cutaneous conditions (licking wounds, hot spots...)
- **810 nm:** Optimal wavelength for Cytochrome c oxidase absorption favoring production of ATP and therefore production of energy
- **980 nm:** Optimal wavelength for water absorption and strong absorption by hemoglobin



#### Protocols

Your Mano Medical laser integrates all the necessary pre-recorded programs for dogs, cats, horses and exotics!

Cellular Targets in Red and Near Infrared (NIR) Wavelengths





# EXCLUSIVE DISTRIBUTION



Please contact us to check distribution agreement in your country.  
Tel. +33 637 15 73 34 • [r.frejaville@manomedical.com](mailto:r.frejaville@manomedical.com)

[www.manomedical.com](http://www.manomedical.com)

# petMAP<sub>g3</sub>

## Convenient, Easy to use, Accurate and Profitable!



**PetMAP™** has been specifically developed for veterinary use and allows to measure:

- Systolic and diastolic blood pressure
  - Mean arterial blood pressure (MAP)
  - Heart rate
- Display of systolic, diastolic, mean arterial pressure along with heart rate
  - Correlated with intra-arterial blood pressure
  - Real-time display of oscillometric envelope
  - Selectable BP cycle times for measurement reminders
  - Graphic display of last 45 readings and NSV
  - Tabular display of readings
  - Alarm set for systolic blood pressure
  - BP cycle time set for automatic reminders to start another BP measurement
  - User supplied SD memory card records all BP/HR values and «power off» images



### INCLUDES 7 CUFFS IN DIFFERENT SIZES

(2 - 2.5 - 3 - 3.5 - 4 - 4.5 and 5.5 cm)

Optional

- Large cuffs: 6.5 - 8 - 10 and 13 cm
- Protective cover
- Pole mount
- AC/DC adapter

# Choose the right model to suit your needs!

	petMAP graphic II	petMAP g3	petMAP+ II	petMAP+ II SpO2
Measured Parameters	<ul style="list-style-type: none"> <li>✓ Blood pressure (systolic diastolic and MAP)</li> <li>✓ Heart rate</li> </ul>	<ul style="list-style-type: none"> <li>✓ Blood pressure (systolic diastolic and MAP)</li> <li>✓ Heart rate</li> <li>✓ Temperature (optional probe)</li> </ul>	<ul style="list-style-type: none"> <li>✓ Blood pressure (systolic diastolic and MAP)</li> <li>✓ Heart rate</li> <li>✓ Temperature</li> <li>✓ ECG (optional module)</li> <li>✓ Capnography (optional module)</li> </ul>	<ul style="list-style-type: none"> <li>✓ Blood pressure (systolic diastolic and MAP)</li> <li>✓ Heart rate</li> <li>✓ Temperature</li> <li>✓ Pulse oxymetry</li> <li>✓ ECG (optional module)</li> <li>✓ Capnography (optional module)</li> </ul>
Display	4.3" (10.9 cm) Touchscreen		5" (12.7 cm) Touchscreen	
Cuffs Inflation	Automatic with user triggered		Automatic and BP cycle time setting for automatically repeated BP measurements	
Power	4 AA Alkaline		4 AA NiMH and AC/DC Adapter included	
Included Accessories	<ul style="list-style-type: none"> <li>✓ 7 cuffs from 2 to 5.5 cm</li> </ul>		<ul style="list-style-type: none"> <li>✓ 7 cuffs from 2 to 5.5 cm</li> <li>✓ Temperature esophageal probe</li> </ul>	<ul style="list-style-type: none"> <li>✓ 7 cuffs from 2 to 5.5 cm</li> <li>✓ Temperature esophageal probe</li> <li>✓ SpO2 lingual and toe sensors</li> </ul>



## Useful tips

### Blood pressure:

Why and how to measure it?

Visit our section

**"Did you know it?"**

[www.manomedical.com/en](http://www.manomedical.com/en)



See our video introducing petMAP on  
[www.manomedical.com/en/blood-pressure/petmap](http://www.manomedical.com/en/blood-pressure/petmap)





## petMAP+ II Multi-Parameter Monitor

### Monitoring and Diagnosis!

- Blood pressure (Systolic, diastolic and MAP)
- Respiratory rate
- Temperature
- Pulse oxymetry on petMAP+ II SpO<sub>2</sub> model

#### For a comprehensive monitoring:

- 2 additional modules (options):
  - ECG module  
Display ECG waveform and HR
  - Mainstream capnography module  
Display of capnography, CO<sub>2</sub> numerics (EtCO<sub>2</sub>, Insp CO<sub>2</sub>, RtCO<sub>2</sub>) and respiratory rate



5" touch-screen



#### CUFFS

- 7 cuffs in different sizes (2 - 2.5 - 3 - 3.5 - 4 - 4.5 and 5.5 cm)
- 4 optional large cuffs (6.5 - 8 - 10 and 13 cm)
- Measurements: Automatic and programmable in monitoring mode - Automatic in diagnosis mode



### Capno-M Bluetooth®



- Simply insert the airway adapter on the unit between the endotracheal tube and the breathing circuit after patient intubation
- Can be connected via Bluetooth to the PM10B and SM100 monitors

### Capno5 Capnograph

Micro-flow™ capnography suitable for use in a wide range of veterinary patients including cats and dogs of all sizes!

- CO<sub>2</sub> waveforms
- End-tidal CO<sub>2</sub> (EtCO<sub>2</sub>)
- Fractional inspired CO<sub>2</sub> (FiCO<sub>2</sub>)
- Respiratory rate



# SM100

## Multiparameter Monitoring

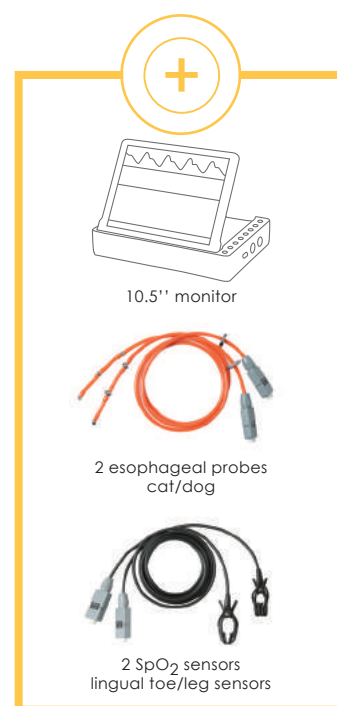
A technology specially designed for veterinary use!

The VetSpecs® SM100 monitor is developed for vital signs monitoring and ECG testing in surgery and dentistry.



### The parameters:

- Sidestream Micro-flux™ or Mainstream capnography
- Non-invasive blood pressure using plethysmographic method suitable for all animal sizes from 2 to 60 kg
- Pulse oxymetry with two veterinary specific SpO<sub>2</sub> sensors:
  - 1 lingual sensor
  - 1 leg/toe sensor suitable for use on legs and toes covered with pigmented tissue and dense fur and for use for veterinary
- ECG registered with a single esophageal probe
- Core body temperature with a single esophageal probe
- Six-lead diagnostic ECG(option)



EXCLUSIVE  
EUROPE  
DISTRIBUTION

# PM10B

## Multiparameter Monitoring

- Sidestream Micro-flux™ or Mainstream capnography
- Pulse oxymetry
- ECG registered with a single esophageal probe
- Core body temperature with a single esophageal probe



Our multiparameter monitors come with accessories specifically adapted to animals.

## Equine Laryngoscopes



### Mano View Dynamic Exam Dynamic laryngoscopy system

Examining the upper respiratory tract during exercise helps the diagnosis of respiratory problems.

The endoscope cable is placed into the horse's nasal cavity with the camera tip positioned above the larynx. This placement gives an excellent view of the epiglottis and larynx, both at rest and during workouts.



Endoscope cable length: 1060 mm  
Diameter : 11.5 mm

- Lightweight, harness-mounted system
- Rider independent system
- Results in as little as 30 Minutes
- High definition wide angle sensor
- Record Audio & Video to SD Card
- Articulated tip

NEW

### Mano View Fast Exam Fast exam at the end of a race

With its phone holder, the Mano View Fast Exam endoscope allows a quick examination of the larynx. Great for race track work and sales

- 'Plug and Play' Simplicity
- Control body holds smartphone
- One-Handed Operation
- High Resolution & Super Bright LED's
- Wired or Wireless Functionality:  
Android Devices with USB Cable or wireless  
iPhone with Wireless Transmitter
- Up/Down tip articulation



Endoscope cable length: 1000 mm  
Diameter : 8.7 mm

► Please contact us to check distribution agreement in your country.  
Tel. +33 637 15 73 34 • [r.frejaville@manomedical.com](mailto:r.frejaville@manomedical.com)



# ManoView Equine Endoscope

Mobility in all simplicity!

NEW

Horse respiratory and digestive tracks exams



Photo credit: Dr Scicluna / Equi'Institut

- **Easy to use**  
Visualization and recording of images and videos on smartphone, tablet, and PC (compatible with Windows and MAC)
- **Integrated**  
video processor and light source
- **Ultra light-weight**  
1 kg only!
- **Very robust**  
No optic fiber inside

## ManoView 1500

- Length: 1500 mm, diam. 8.7 mm  
2 mm working channel  
Super-bright LED light

## ManoView 3500

- Length: 3500 mm, diam. 12.6 mm  
2.8 mm working channel  
Super-bright 2 LEDs-light  
More light for a clearer and more full detailed image!

Endoscopes of different lengths and diameters available on request  
Accessories supplied as an option  
Detailed informations by calling us at  
+33 (0)2 96 85 86 76



EXCLUSIVE  
EUROPE  
DISTRIBUTION

- **Portable high pressure pump unit**  
for air/water and suction (option)
  - High pressure (Up to 4 bars)  
for smarter and faster exam
  - More power to inflate and flush



► Please contact us to check distribution agreement in your country.  
Tel. +33 637 15 73 34 • [r.frejaville@manomedical.com](mailto:r.frejaville@manomedical.com)

## High Frequency Electro surgery units



### Vet-HF M Monopolar unit

- Microprocessor-controlled monopolar electro surgery unit
- For small and medium surgeries
- 100 W maximum output power



100 W

output power!

### Vet-HF B Bipolar unit

- Microprocessor-controlled bipolar electro surgery unit
- Perfect for the small animal practice
- 100 W maximal output power



### VetoSurge Bipolar unit

- Works at 1 MHz frequency ensuring reduced tissue damage but strong cutting and coagulation
- Simultaneous monopolar and bipolar modes!
- 110 W maximal output power

### RadioVet Bipolar unit

- Radiosurgery: A 4 MHz frequency allowing high precision surgeries or classical surgeries with strong coagulation
- Very efficient coagulation thanks to the very latest semiconductor high voltage gradient generator
- 200 W maximum output power



The tool for the specialist,  
covering multiple situations  
the surgeon may have to deal with

**Our electro surgery devices include all the requested accessories** (holders, neutral plate, forceps and electrodes).

# OTHER PRODUCTS



Please contact us to check distribution agreement in your country.  
Tel. +33 637 15 73 34 • [r.frejaville@manomedical.com](mailto:r.frejaville@manomedical.com)

---

[www.manomedical.com](http://www.manomedical.com)



## MonitoVet

The most compact and affordable vital signs monitors

NEW

Series of monitors configured according to your needs!

### Choose YOUR combination:

- ▶ Pulse oxymetry + Temperature
- ▶ Pulse oxymetry + Non invasive blood pressure + Temperature
- ▶ Pulse oxymetry + Capnography
- ▶ Pulse oxymetry + Capnography + Non invasive blood pressure

- Easy operation by 3.5" (8.90 cm) color TFT display
- Lightweight: 250 gr only
- Lithium ion rechargeable battery allowing 8 hour-working-time
- Sensors and cuffs adapted to use on animals
- Optional protective cover



### Specific Veterinary Accessories!



Blood pressure cuffs



Temperature probe



2 SpO<sub>2</sub> lingual and toe sensors



CO<sub>2</sub> adaptors



## VetO<sup>2</sup>+ Silent Oxygen concentrator

The smallest and soundless ever!

- Produces 0.5 to 5 l of oxygen per minute
- Equipped with a humidification flask including a pressure relief valve
- Cabin suitcase size (35 x 28 x 51 cm)
- Quiet: only 40 dB



## apAlert apnea detector

The original!

Easy anaesthesia respiration monitor

- Visual and acoustic alarms
- Display of seconds passed between two breaths
- Alarms and sensitivity adjustment



Technical questions,  
spare parts, repair,  
our support is available at  
**+33 296 85 53 40**  
**tech@manomedical.com**



## Laryngoscope

Set of 3 Miller blades

- 1 x 78 mm Miller blade (n°0)
- 1 x 102 mm Miller blade (n°1)
- 1 x 155 mm Miller blade (n°2)

## SK600I V2 Infusion pump



Flow adjustable up to 1500 ml / h • Compatible with most of the current silicone IV sets

- KVO rate: 0.5 ml/h
- Bolus rate: from 0.10 to 1500 ml/h
- Occlusion: low, medium and high
- Air bubble detection
- Alarms: occlusion, air in line, system error, battery low, reminder, etc.
- Backup battery

## Vet Temp2 Veterinary fluid warmer

- Use with standard fluids, blood and TPN fluids
- Accept standard tubing sets for small animals
- Temperature sensors allow the temperature control of the heating plate



## SK500II V2 Syringe pump

- Flow rate: up to 500 ml / h
- Applicable injectors 10, 20 and 50 ml syringes
- Bolus function
- Fast start function and anti bolus function



## IV Stab Stabilizer for infusion

Design to prevent intravenous catheter occlusion  
Set of 3 sizes (S, M and L)





# Scaler

## D7 Ultrasonic scaler

Including a 400 ml water tank and a detachable and autoclavable handpiece

- Applications: scaling, periodontal and endodontic treatments
- 7 different tips
- EMS compatible detachable handpiece



7 different tips for endless applications



## Vet200 Plus Ultrasonic scaler

Portable and powerful Piezo-electric scaler  
Perfect for veterinary use

- 5 piezo-ceramic tips
- Automatic frequency tracking
- Pressure from 0.1 to 0.5 bar



## Strong Micromotor and Polisher

Light, compact and handy for interventions on small animals or devitalized teeth

- Compact and light type E motor
- Regular speed from 0 to 35 000 RPM
- 1:1 contra angle included



# Exam lamps

## Alfa LED

- Lamp diameter: 8.6 cm
- Light field diameter at a distance of 0.50 m.: 14 cm
- Temperature: 4200° K
- Colour rendering index: 95 Ra
- Fixing systems:
  - Wall
  - Desk
  - Mobile
  - Rail

**35 000 LUX** at 0.5 m.



LED lifetime: 60000 hours !



## VetLight 30

- Lamp diameter: 19.5 cm
- Light field diameter at a distance of 1 m. : 28 cm
- Temperature: 4000° K and 4500° K
- Colour rendering index: 95 Ra
- Control of illuminance in 7 steps
- Models:
  - Mobile
  - Ceiling
  - Wall

**35 000 LUX** at 1 m.



**NEED A DEMO, TECHNICAL ADVICES or AN OFFER**

Call us at **+33 2 96 85 86 76**

► Please contact us to check distribution agreement in your country.  
Tel. +33 637 15 73 34 • [r.frejaville@manomedical.com](mailto:r.frejaville@manomedical.com)

# Surgical lamps



**120 000 Lux** at 1 m.

## VetLight 80

- Lamp diameter: 30 cm
- Light field diameter adjustable from 11 to 33 cm
- Temperature: 4500° K and 5000° K
- Colour rendering index: 94 Ra
- Adjustable illuminance
- Models:
  - Mobile
  - Ceiling
  - Double ceiling
  - Wall
- 2 sterilizable handles included



### Why LED lighting?

- It does not dazzle
- It does not strain the eyes
- It suppresses shadows
- It produces less heat

## VetLight Golden

The surgeon's lamp

- Lamp diameter: 52 cm
- Light field diameter adjustable from 11 to 35 cm
- Temperature adjustable from 4000° K to 4600°K
- Colour rendering index: 95 Ra
- 81 LEDs
- Models:
  - Mobile
  - Ceiling
  - Double ceiling
  - Wall
- 2 sterilizable handles included

**1 60 000 Lux** at 1 m.







### 4 liter-ultrasonic instrument cleaning bath

- Useful dimensions: 300 x 155 x 100 mm
- Simple and intuitive operation
- Supplied with stainless steel lid

### Askir vacuum unit

For a clean and bloodless operating field

- Portable and compact
- Suitable for medical procedures
- 1 liter autoclavable collection jar
- Flow: 30 l / minute



Technical questions,  
spare parts, repair,  
our support is available at  
**+33 296 85 53 40**  
[tech@manomedical.com](mailto:tech@manomedical.com)



### Nebulizer

Designed for aerosoltherapy

- Operating air flow: 5.2 l / min
- Pressure: 1.3 bar
- Neb-rate with 4 ml solution: 0.50 ml / min

# Seal&Cut MV1

Vessel sealing + monopolar and bipolar electro-surgery  
**ALL-IN-ONE!**



## Why Seal&Cut MV1 vessel sealing?

- Vessel sealing function for a wide range of clinical applications (ovariectomy, splenectomy, urology, hysterectomy, thoracotomy and many others)
- High power: up to 400 Watts
- High frequency: up to 390 kHz
- Full set of reusable and autoclavable accessories
- Insert of various shapes for all situations



Accuracy  
Performance  
Durability  
Safety

## Seal&Cut MV1 features:

- **Many electro-surgery modes:** 4 Cut Modes, 4 Coag Mode, 2 Bipolar Cut Modes, 3 Bipolar Coag Modes
- **LCD touch screen** to allow quick and easy interactive experience to users
- **6SENSE technology** to maintain set power over wider range of tissue by Tissue Feedback Technology
- **PREM:** Patient Return Electrode Monitoring providing safety against the patient return electrode site burns.
- **Auto stops:** Automatically RF current after completion of vessel sealing
- **BiCoag alarm:** Audio feedback after completion of bipolar coag, to reduce charring and sticking
- **Self diagnosis** to ensure the ESU with accessories are safe for functioning and display error codes if any
- **User programmable:** 30 user settable programs with procedure and surgeon name

► Please contact us to check distribution agreement in your country.  
Tel. +33 637 15 73 34 • [r.frejaville@manomedical.com](mailto:r.frejaville@manomedical.com)

## VetScience Microscopes

NEW

### BK1201 Binocular Microscope

A simple but remarkably high-quality instrument designed to be used in veterinary practice

- 4 semi-plan objectives (4x / 10x / 40x and 100x)
- Ocular: WF 10 x 18 mm
- 3W LED lamp, adjustable brightness



Exceptional optical quality: optimal contrast, clear images, adapted brightness

### B202 Binocular Microscope

Ideally designed for intensive use in advanced veterinary practice

- 4 infinite-plan objectives (4x / 10x / 40x et 100x)
- Ocular: WF 10 x 20 mm
- 3W LED lamp, adjustable and focus

### B203 Trinocular Microscope

The X0.25 C-mount provides the widest possible field of view for its high resolution 10MP C-mount camera or tablet (sold separately).

- 4 infinite-plan objectives (4x / 10x / 40x and 100x)
- Ocular: WF 10 x 20 mm
- 3W LED lamp, adjustable and focus

B203 microscope options : \_\_\_\_\_

### VetScience Cam10

Digital 10 MPixels CMOS camera with USB connection

### VetScience Tablet5

C-Mounted Android-powered tablet including a 9.7" screen built-in a 5MP camera



Trinocular microscope B203





## HF1060 portable X-Ray generator

- High frequency X-Ray generator certified CE Medical 93/42
- Exposure hand switch
- Dual laser for easy focal distance setting
- Convenient handling for advanced image quality
- Supplied in a robust carrying case

mAs: 0,32 - 100 mAs • Max. output power: 3.2 kW @ 80 kV 40 mA  
Focal spot: 2.0 mm • Weight: 12.9 Kg



**NEED A DEMO, TECHNICAL ADVICES or AN OFFER**

Call us at **+33 2 96 85 86 76**

## Poskom 20BT lite portable X-Ray generator

- High frequency X-Ray generator certified CE Medical 93/42
- Internal battery or external power supply operation
- Up to 650 exposures on one charge
- Dual laser for easy focal distance setting
- Supplied in a robust aluminium carrying case



**BATTERY  
Operation**

mAs: 0,4 - 20 mAs • Max. output power : 1.6 kW @ 80 kV 20 mA  
Focal spot: 1.2 mm • Weight: 7.2 Kg



# Equine Flat Panel DR Imaging **WiFi**

- Transported in a rigid, water-proof case highly resistant to impacts
- Long-life battery
- Small size and handle for easy transportation
- Completely wireless
- Laptop with high-resolution screen included



Metron software and  
Intellect module powered  
by Artificial Intelligence

- Intuitive software producing high quality images
- A complete range of image correction and adjustment tools



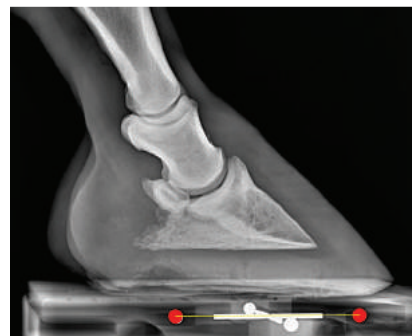
See our introduction video on [www.manomedical.com/en/section:product/digital-x-ray/flat-panel-for-equine](http://www.manomedical.com/en/section:product/digital-x-ray/flat-panel-for-equine)



# Artificial Intelligence

A whole world of possibilities to facilitate the work of equine veterinarians

- Automatic measurements
- Automatic image labeling
- Automatic hoof measurements and mark-up
- Automatic image location, calibration, cropping and rotation
- No need to predefine a worklist
- No need to return to the computer to label images
- Deep learning : Intellect module learns from experience and improves its detection capabilities



Auto-calibration



Automatic photo rotation

PRE-PURCHASE  
EXAMS MADE  
EASIER!

- **AUTOMATIC** measurements, image labeling, rotation and calibration
- **WITH A SIMPLE CLICK**, share images or reports via email or cloud server

A full range of functions to make work easier

- Intuitive database management
- Simple image comparison for improved workflow
- Pictures, videos and PDF reports management
- Automatic export in DICOM or JPG format
- All equine body parts identified
- Easy report creation including images and pictures
- Different calibration methods available
- Real size display and printing
- Share images with owner via cloud server with a single click



► Please contact us to check distribution agreement in your country.  
Tel. +33 637 15 73 34 • [r.frejaville@manomedical.com](mailto:r.frejaville@manomedical.com)





## ▶ LaserFlex LT16 / by Mano Médical

**LASER THERAPY FOR DOGS, CATS, EXOTICS & HORSES**

BATTERY OPERATED  
COMPACT AND LIGHTWEIGHT  
SIMPLE AND INTUITIVE



Medical equipment for veterinarians

15, rue du Noroit - ZA des Alleux  
22100 Taden - France

Tel. +33 (0)2 96 85 86 76

[export@manomedical.com](mailto:export@manomedical.com)

[www.manomedical.com](http://www.manomedical.com)

Follow us!

